

Agenda

Steuben County REMC
Regular Board of Directors Meeting
August 25, 2025

1. Call to Order
2. Roll Call
3. General Consent Items
 - a. Agenda
 - b. Minutes of July 28, 2025 Board Meeting
 - c. Bills
 - d. Director Expenses
 - e. New Hookups
 - f. New Memberships
 - g. IUPPS Update
4. Informative Reports
 - a. CEO Financial Report
 - b. Re-Comm Update
 - c. Operation Round Up
 - d. Safety Meeting
 - e. WVPA Board Meeting
 - f. Member Services Report
 - g. Cyber Security
 - h. Broadband Update
 - i.
 - j.
 - k.
5. Executive Session
 - a.
6. Decisions Needed
 - a.
7. Corporate Council Report
 - a.
8. Other Business
9. Calendar & Announcements
 - a. Next Regular Meeting September 29, 2025
10. Adjournment

Steuben County REMC

Monthly Operating Report

	Year to Date			Jul-25	This Month			
	Last year	This Year	Budget	Variance	Last Year	This Year	Budget	Variance
Operating Revenue	\$17,319,648	\$18,272,222	\$18,581,170	-\$308,948	\$2,866,876	\$3,041,643	\$3,063,249	-\$21,606
Kwh Sold	126,202,174	128,896,359	129,384,376	-488,017	\$20,768,496	\$22,067,873	\$21,786,188	281,685
							\$0	
Cost of Purchased Power	\$10,774,970	\$10,606,173	\$10,625,500	-\$19,327	\$1,829,372	\$1,906,097	\$1,788,148	\$117,949
Kwh Purchased	132,392,399	135,045,941	133,626,104	1,419,837	\$22,041,979	\$23,714,860	\$23,346,991	367,869
							\$0	
Distribution Expense - Operations	\$442,766	\$472,013	\$446,580	\$25,433	\$61,859	\$62,782	\$64,351	-\$1,569
Distribution Expense - Maintenance	\$793,065	\$825,945	\$952,992	-\$127,047	\$137,903	\$143,936	\$131,252	\$12,684
Consumer Accounts Expense	\$255,730	\$274,184	\$307,085	-\$32,901	\$38,893	\$39,340	\$43,219	-\$3,879
Consumer Services & Info Exp.	\$81,381	\$81,498	\$135,403	-\$53,905	\$20,122	\$19,544	\$27,972	-\$8,428
Sales Expense	\$58,776	\$63,845	\$64,246	-\$401	\$8,574	\$7,894	\$9,497	-\$1,603
Administrative & General Expense	\$1,815,509	\$1,740,652	\$1,950,372	-\$209,720	\$250,249	\$259,234	\$258,004	\$1,230
Total Operation & Maintenance Exp.	\$14,222,196	\$14,064,310	\$14,482,178	-\$417,868	\$2,346,971	\$2,438,826	\$2,322,443	\$116,383
Depreciation & Amortization Exp.	\$1,440,536	\$1,705,535	\$1,706,326	-\$791	\$223,529	\$246,756	\$245,439	\$1,317
Tax Expense - Property	\$109,900	\$77,000	\$140,000	-\$63,000	\$15,700	\$11,000	\$20,000	-\$9,000
Tax Expense - Other	\$27	\$0	\$2,482	-\$2,482	\$0	\$0	\$0	\$0
Interest on Long Term Debt	\$1,052,762	\$1,334,229	\$1,334,230	-\$1	\$163,458	\$195,343	\$195,343	\$0
Interest Charged to Construction(credit)	\$0	\$0	\$0	\$0	\$0	\$0	\$0	\$0
Interest Expense Other	\$0	\$0	\$0	\$0	\$0	\$0	\$0	\$0
Other Deductions	\$0	\$0	\$0	\$0	\$0	\$0	\$0	\$0
Total Cost of Electric Service	\$16,825,420	\$17,181,074	\$17,665,216	-\$484,142	\$2,749,658	\$2,891,925	\$2,783,225	\$108,700
Patronage Capital & Operating Margins	\$494,228	\$1,091,148	\$915,954	\$175,194	\$117,217	\$149,717	\$280,024	-\$130,307
Non Operating Margins - Interest	\$12,738	\$12,684	\$12,950	-\$266	\$1,825	\$1,836	\$1,850	-\$14
Allowance for Funds Used During Const.	-\$350	\$0	\$0	\$0	\$0	\$0	\$0	\$0
Non Operating Margins - Other	\$1,481	\$2,715	\$0	\$2,715	\$231	\$224	\$0	\$224
Generation & Transmission Cap. Credits	\$0	\$0	\$0	\$0	\$0	\$0	\$0	\$0
Other Cap. Credits & Patronage Divid.	\$22,356	\$8,699	\$600	\$8,099	\$6,611	\$0	\$600	-\$600
Extraordinary Items	\$0	\$0	\$0	\$0	\$0	\$0	\$0	\$0
Patronage Capital or Margins	\$530,452	\$1,115,246	\$929,504	\$185,742	\$125,884	\$151,777	\$282,474	-\$130,697

Steuben County REMC

Monthly Operating Report

Jul-25

This Month

Last year

This Year

Budget

Variance

Operating Revenue

\$2,866,876

\$3,041,643

\$3,063,249

-\$21,606

Kwh Sold

20,768,496

22,067,873

21,786,188

281,685

Cost of Purchased Power

\$1,829,372

\$1,906,097

\$1,788,148

\$117,949

Kwh Purchased

22,041,979

23,714,860

23,346,991

367,869

Distribution Expense - Operations

\$61,859

\$62,782

\$64,351

-\$1,569

Distribution Expense - Maintenance

\$137,903

\$143,936

\$131,252

\$12,684

Consumer Accounts Expense

\$38,893

\$39,340

\$43,219

-\$3,879

Consumer Services & Info Exp.

\$20,122

\$19,544

\$27,972

-\$8,428

Sales Expense

\$8,574

\$7,894

\$9,497

-\$1,603

Administrative & General Expense

\$250,249

\$259,234

\$258,004

\$1,230

Total Operation & Maintenance Exp.

\$2,346,971

\$2,438,826

\$2,322,443

\$116,383

Depreciation & Amortization Exp.

\$223,529

\$246,756

\$245,439

\$1,317

Tax Expense - Property

\$15,700

\$11,000

\$20,000

-\$9,000

Tax Expense - Other

\$0

\$0

\$0

\$0

Interest on Long Term Debt

\$163,458

\$195,343

\$195,343

\$0

Interest Charged to Construction(credit)

\$0

\$0

\$0

\$0

Interest Expense Other

\$0

\$0

\$0

\$0

Other Deductions

\$0

\$0

\$0

\$0

Total Cost of Electric Service

\$2,749,658

\$2,891,925

\$2,783,225

\$108,700

Patronage Capital & Operating Margins

\$117,217

\$149,717

\$280,024

-\$130,307

Non Operating Margins - Interest

\$1,825

\$1,836

\$1,850

-\$14

Allowance for Funds Used During Const.

\$0

\$0

\$0

\$0

Non Operating Margins - Other

\$231

\$224

\$0

\$224

Generation & Transmission Cap. Credits

\$0

\$0

\$0

\$0

Other Cap. Credits & Patronage Divid.

\$6,611

\$0

\$600

-\$600

Extraordinary Items

\$0

\$0

\$0

\$0

Patronage Capital or Margins

\$125,884

\$151,777

\$282,474

-\$130,697

Steuben County REMC

Monthly Operating Report

Jul-25

Year to Date

Last Year

This Year

Budget

Variance

Operating Revenue

\$17,319,648

\$18,272,222

\$18,581,170

-\$308,948

Kwh Sold

126,202,174

128,896,359

129,384,376

-488,017

Cost of Purchased Power

\$10,774,970

\$10,606,173

\$10,625,500

-\$19,327

Kwh Purchased

132,392,399

135,045,941

133,626,104

1,419,837

Distribution Expense - Operations

\$442,766

\$472,013

\$446,580

\$25,433

Distribution Expense - Maintenance

\$793,065

\$825,945

\$952,992

-\$127,047

Consumer Accounts Expense

\$255,730

\$274,184

\$307,085

-\$32,901

Consumer Services & Info Exp.

\$81,381

\$81,498

\$135,403

-\$53,905

Sales Expense

\$58,776

\$63,845

\$64,246

-\$401

Administrative & General Expense

\$1,815,509

\$1,740,652

\$1,950,372

-\$209,720

Total Operation & Maintenance Exp.

\$14,222,196

\$14,064,310

\$14,482,178

-\$417,868

Depreciation & Amortization Exp.

\$1,440,536

\$1,705,535

\$1,706,326

-\$791

Tax Expense - Property

\$109,900

\$77,000

\$140,000

-\$63,000

Tax Expense - Other

\$27

\$0

\$2,482

-\$2,482

Interest on Long Term Debt

\$1,052,762

\$1,334,229

\$1,334,230

-\$1

Interest Charged to Construction(credit)

\$0

\$0

\$0

\$0

Interest Expense Other

\$0

\$0

\$0

\$0

Other Deductions

\$0

\$0

\$0

\$0

Total Cost of Electric Service

\$16,825,420

\$17,181,074

\$17,665,216

-\$484,142

Patronage Capital & Operating Margins

\$494,228

\$1,091,148

\$915,954

\$175,194

Non Operating Margins - Interest

\$12,738

\$12,684

\$12,950

-\$266

Allowance for Funds Used During Const.

-\$350

\$0

\$0

\$0

Non Operating Margins - Other

\$1,481

\$2,715

\$0

\$2,715

Generation & Transmission Cap. Credits

\$0

\$0

\$0

\$0

Other Cap. Credits & Patronage Divid.

\$22,356

\$8,699

\$600

\$8,099

Extraordinary Items

\$0

\$0

\$0

\$0

Patronage Capital or Margins

\$530,452

\$1,115,246

\$929,504

\$185,742

Steuben County REMC

Monthly Operating Report Fiber

	Year to Date			Jul-25		This Month		
	Last Year	This Year	Budget	Variance	Last Year	This Year	Budget	Variance
Operating Revenue	\$2,198,323	\$2,605,207	\$2,320,747	\$284,460	\$353,637	\$371,081	\$403,629	-\$32,548
					\$0	\$0	\$0	\$0
Distribution Expense - Operations	\$50,920	\$32,362	\$27,348	\$5,014	\$6,860	\$5,157	\$4,558	\$599
Distribution Expense - Maintenance	\$133,048	\$147,136	\$79,178	\$67,958	\$19,694	\$35,801	\$12,944	\$22,857
Consumer Accounts Expense	-\$2,851	-\$1,261	\$17,745	-\$19,006	-\$658	\$0	\$2,882	-\$2,882
Consumer Services & Info Exp.	\$0	\$0	\$0	\$0	\$0	\$0	\$0	\$0
Sales Expense	\$0	\$4,295	\$0	\$4,295	\$0	\$0	\$0	\$0
Administrative & General Expense	\$344,731	\$396,585	\$390,003	\$6,582	\$49,683	\$61,674	\$66,840	-\$5,166
Total Operation & Maintenance Exp.	\$525,848	\$579,117	\$514,274	\$64,843	\$75,580	\$102,631	\$87,224	\$15,407
Depreciation & Amortization Exp.	\$707,257	\$911,229	\$784,688	\$126,541	\$115,786	\$131,398	\$131,300	\$98
Tax Expense - Property	\$45,500	\$0	\$60,000	-\$60,000	\$6,500	\$0	\$10,000	-\$10,000
Tax Expense - Other	\$0	\$0	\$0	\$0	\$0	\$0	\$0	\$0
Interest on Long Term Debt	\$737,762	\$1,012,229	\$862,887	\$149,342	\$118,458	\$149,343	\$149,343	\$0
Interest Charged to Construction(credit)	\$0	\$0	\$0	\$0	\$0	\$0	\$0	\$0
Interest Expense Other	\$0	\$0	\$0	\$0	\$0	\$0	\$0	\$0
Other Deductions	\$0	\$0	\$0	\$0	\$0	\$0	\$0	\$0
Total Cost of Electric Service	\$2,016,367	\$2,502,574	\$2,221,849	\$280,725	\$316,324	\$383,373	\$377,867	\$5,506
Patronage Capital & Operating Margins	\$181,956	\$102,633	\$98,898	\$3,735	\$37,313	-\$12,292	\$25,762	-\$38,054
Non Operating Margins - Interest	\$0	\$0	\$0	\$0	\$0	\$0	\$0	\$0
Allowance for Funds Used During Const.	\$0	\$0	\$0	\$0	\$0	\$0	\$0	\$0
Non Operating Margins - Other	\$0	\$0	\$0	\$0	\$0	\$0	\$0	\$0
Generation & Transmission Cap. Credits	\$0	\$0	\$0	\$0	\$0	\$0	\$0	\$0
Other Cap. Credits & Patronage Divid.	\$0	\$0	\$0	\$0	\$0	\$0	\$0	\$0
Extraordinary Items	\$0	\$0	\$0	\$0	\$0	\$0	\$0	\$0
Patronage Capital or Margins	\$181,956	\$102,633	\$98,898	\$3,735	\$37,313	-\$12,292	\$25,762	-\$38,054

Steuben County REMC

Monthly Operating Report

Jul-25

This Month

Last Year

This Year

Budget

Variance

Operating Revenue

\$353,637

\$371,081

\$403,629

-\$32,548

Distribution Expense - Operations

\$6,860

\$5,157

\$4,558

\$599

Distribution Expense - Maintenance

\$19,694

\$35,801

\$12,944

\$22,857

Consumer Accounts Expense

-\$658

\$0

\$2,882

-\$2,882

Consumer Services & Info Exp.

\$0

\$0

\$0

\$0

Sales Expense

\$0

\$0

\$0

\$0

Administrative & General Expense

\$49,683

\$61,674

\$66,840

-\$5,166

Total Operation & Maintenance Exp.

\$75,580

\$102,631

\$87,224

\$15,407

Depreciation & Amortization Exp.

\$115,786

\$131,398

\$131,300

\$98

Tax Expense - Property

\$6,500

\$0

\$10,000

-\$10,000

Tax Expense - Other

\$0

\$0

\$0

\$0

Interest on Long Term Debt

\$118,458

\$149,343

\$149,343

\$0

Interest Charged to Construction(credit)

\$0

\$0

\$0

\$0

Interest Expense Other

\$0

\$0

\$0

\$0

Other Deductions

\$0

\$0

\$0

\$0

Total Cost of Electric Service

\$316,324

\$383,373

\$377,867

\$5,506

Patronage Capital & Operating Margins

\$37,313

-\$12,292

\$25,762

-\$38,054

Non Operating Margins - Interest

\$0

\$0

\$0

\$0

Allowance for Funds Used During Const.

\$0

\$0

\$0

\$0

Non Operating Margins - Other

\$0

\$0

\$0

\$0

Generation & Transmission Cap. Credits

\$0

\$0

\$0

\$0

Other Cap. Credits & Patronage Divid.

\$0

\$0

\$0

\$0

Extraordinary Items

\$0

\$0

\$0

\$0

Patronage Capital or Margins

\$37,313

-\$12,292

\$25,762

-\$38,054

	Steuben County REMC			
	Monthly Operating Report			
	Year to Date			Jul-25
	Last Year	This Year	Budget	Variance
Operating Revenue	\$2,198,323	\$2,605,207	\$2,320,747	\$284,460
Distribution Expense - Operations	\$50,920	\$32,362	\$27,348	\$5,014
Distribution Expense - Maintenance	\$133,048	\$147,136	\$79,178	\$67,958
Consumer Accounts Expense	-\$2,851	-\$1,261	\$17,745	-\$19,006
Consumer Services & Info Exp.	\$0	\$0	\$0	\$0
Sales Expense	\$0	\$4,295	\$0	\$4,295
Administrative & General Expense	\$344,731	\$396,585	\$390,003	\$6,582
Total Operation & Maintenance Exp.	\$525,848	\$579,117	\$514,274	\$64,843
Depreciation & Amortization Exp.	\$707,257	\$911,229	\$784,688	\$126,541
Tax Expense - Property	\$45,500	\$0	\$60,000	-\$60,000
Tax Expense - Other	\$0	\$0	\$0	\$0
Interest on Long Term Debt	\$737,762	\$1,012,229	\$862,887	\$149,342
Interest Charged to Construction(credit)	\$0	\$0	\$0	\$0
Interest Expense Other	\$0	\$0	\$0	\$0
Other Deductions	\$0	\$0	\$0	\$0
Total Cost of Electric Service	\$2,016,367	\$2,502,574	\$2,221,849	\$280,725
Patronage Capital & Operating Margins	\$181,956	\$102,633	\$98,898	\$3,735
Non Operating Margins - Interest	\$0	\$0	\$0	\$0
Allowance for Funds Used During Const.	\$0	\$0	\$0	\$0
Non Operating Margins - Other	\$0	\$0	\$0	\$0
Generation & Transmission Cap. Credits	\$0	\$0	\$0	\$0
Other Cap. Credits & Patronage Divid.	\$0	\$0	\$0	\$0
Extraordinary Items	\$0	\$0	\$0	\$0
Patronage Capital or Margins	\$181,956	\$102,633	\$98,898	\$3,735

July Cash Balance

Farmers State Bank	\$154,179.77
Fifth Third Bank	
1st. Federal S&L	\$301,764.05
Green Data Deposit	\$270,000.00
Capital Credits	\$121,576.18
Working Fund	\$600.00

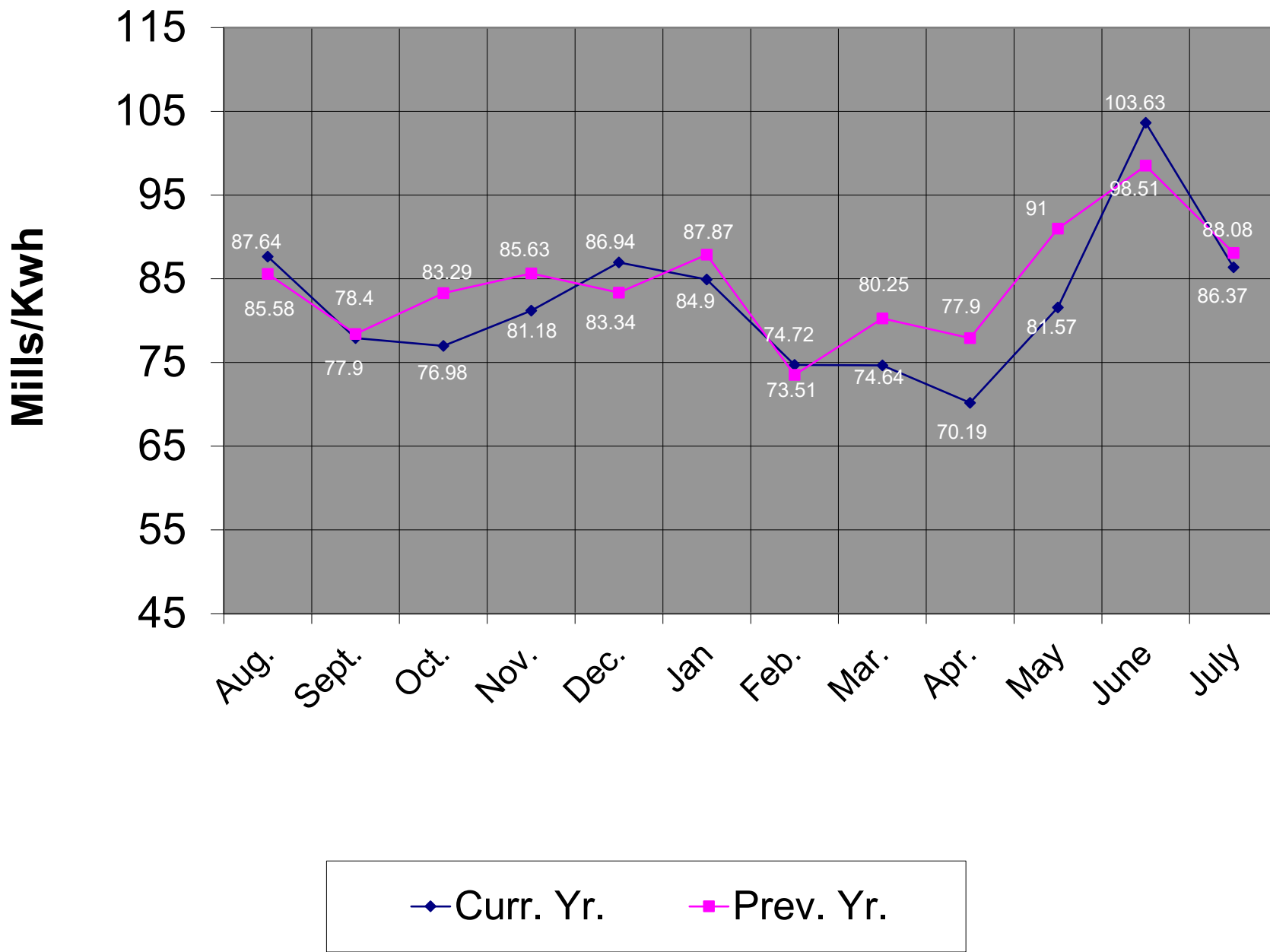
Total	\$848,120.00
--------------	---------------------

WVPA 2023 Cap Credit	\$3,717.96
WVPA 2022 Cap Credit	\$14,229.08
WVPA 2021 Cap Credit	\$5,164.86

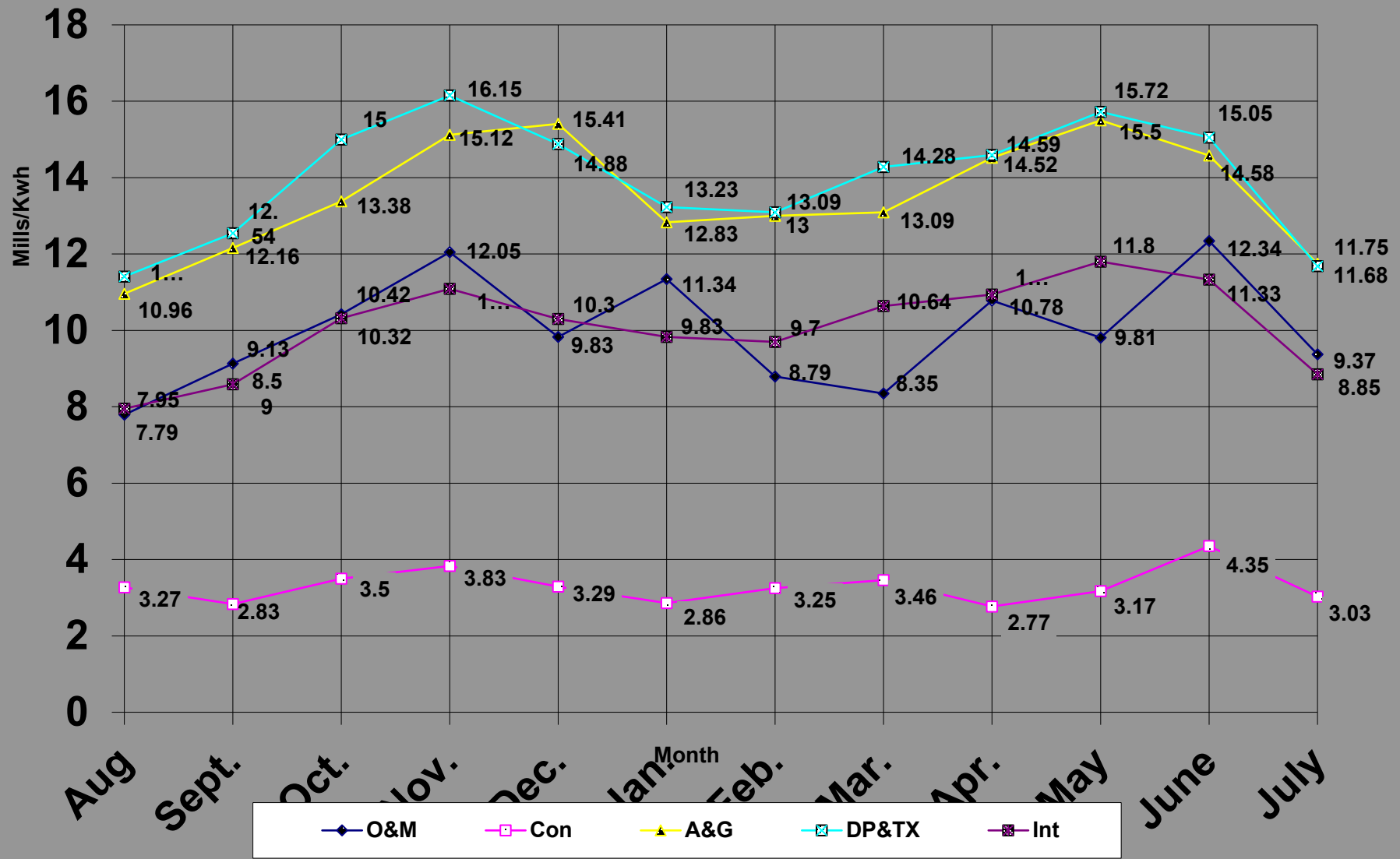
July 2025 Top 40

ACCOUNT	NAME	METER USAGE	CHARGE AMOUNT		
861003	PINE MANOR INC.	2,347,000	189,066.58		
238502	COLD HEADING CO	1,281,000	146,506.35		
906701	CARDINAL IG	1,213,200	137,831.14		
13713801	FAMILY DOLLAR	1,076,600	114,720.70		
13840801	BRIGHTMARK	603,900	65,255.38		
675801	NUCOR BUILDING SYSTEMS	456,000	49,506.92		
24201	SUN NG JELLY BARTON LAKE RV LL	348,000	40,017.99		
641005	VENTRA ANGOLA, LLC	298,800	37,106.31		
945001	719500 MEIJER, MAIL STOP #4	338,640	36,654.43		
13851400	TRUECORE LLC	311,400	33,949.25		
930100	VESTIL MANUFACTURING CORP	225,900	27,787.22		
1051700	MENARD INC	224,880	25,575.63		
709101	MSD OF STEUBEN COUNTY	151,200	19,397.34		
955101	DIVERSIFIED COATING	148,400	16,599.12		
1057401	STEUBEN LAKES REGIONAL	155,360	15,854.74		
340102	MANAPOGO RV CAMPGROUND	113,400	14,683.11		
1041901	TECHO-BLOC MIDWEST CORP	115,360	12,982.28		
943000	YMCA OF STEUBEN COUNTY INC	111,920	12,107.38		
144404	THE GREEN DATA CENTRE LLC	224,400	11,842.18		
13751901	ANGOLA HOGBACK LAKE KOA	79,380	9,787.36		
907101	METAL SPINNERS	69,000	9,457.30		
956205	HIGH POINT HEIFERS LLC	78,000	9,062.36		
975900	MSD OF STEUBEN COUNTY	73,360	8,734.02		
34301	ANGOLA HOGBACK LAKE KOA	66,780	8,576.61		
530301	PETROL STOPPING CTRS#45	68,640	7,384.15		
1037601	FED EX FREIGHT EAST INC	66,480	7,229.81		
700802	CPG OHIO LLC	58,800	7,146.40		
13720901	STONECO	40,900	6,388.46		
13900900	HAPPY ACRES LLC	50,400	6,168.08		
100001	CON-WAY CENTRAL EXPRESS	52,400	6,067.64		
13610000	API CONSTRUCTION CORP	35,720	5,955.36		
13736300	E & B PAVING INC.	33,100	5,854.34		
527800	TOWN OF FREMONT	55,520	5,789.03		
13825301	WINGATE ANGOLA	52,800	5,548.77		
712500	EMF CORPORATION	41,000	5,076.99		
762102	HANSON AGGREGATES INC SITE 562	21,920	4,999.37		
1038600	GLENDARIN HILLS GOLF CLUB	43,600	4,995.79		
1000202	RMH FRANCHISE	39,440	4,360.55		
13614400	SMITH MARK	35,760	4,306.60		
637201	FAIRVIEW MISS CHURCH	25,840	3,729.77		
	July 2024 Totals	10,834,200	\$ 1,144,062.81		0.1055974
	June 2024 Totals	9,767,780	\$ 1,043,603.20		0.1068414

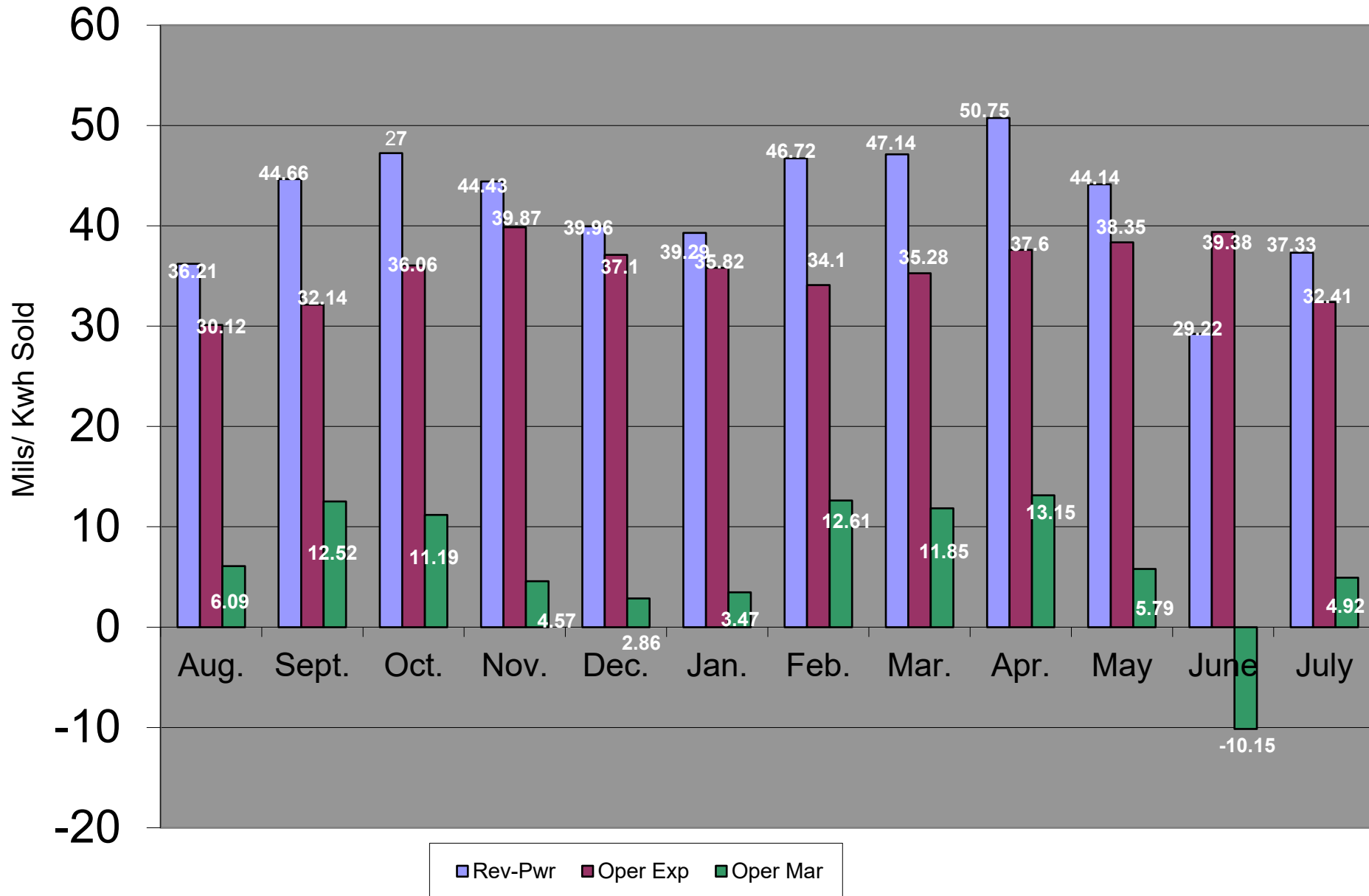
Power Cost in Mills / Kwh Sold



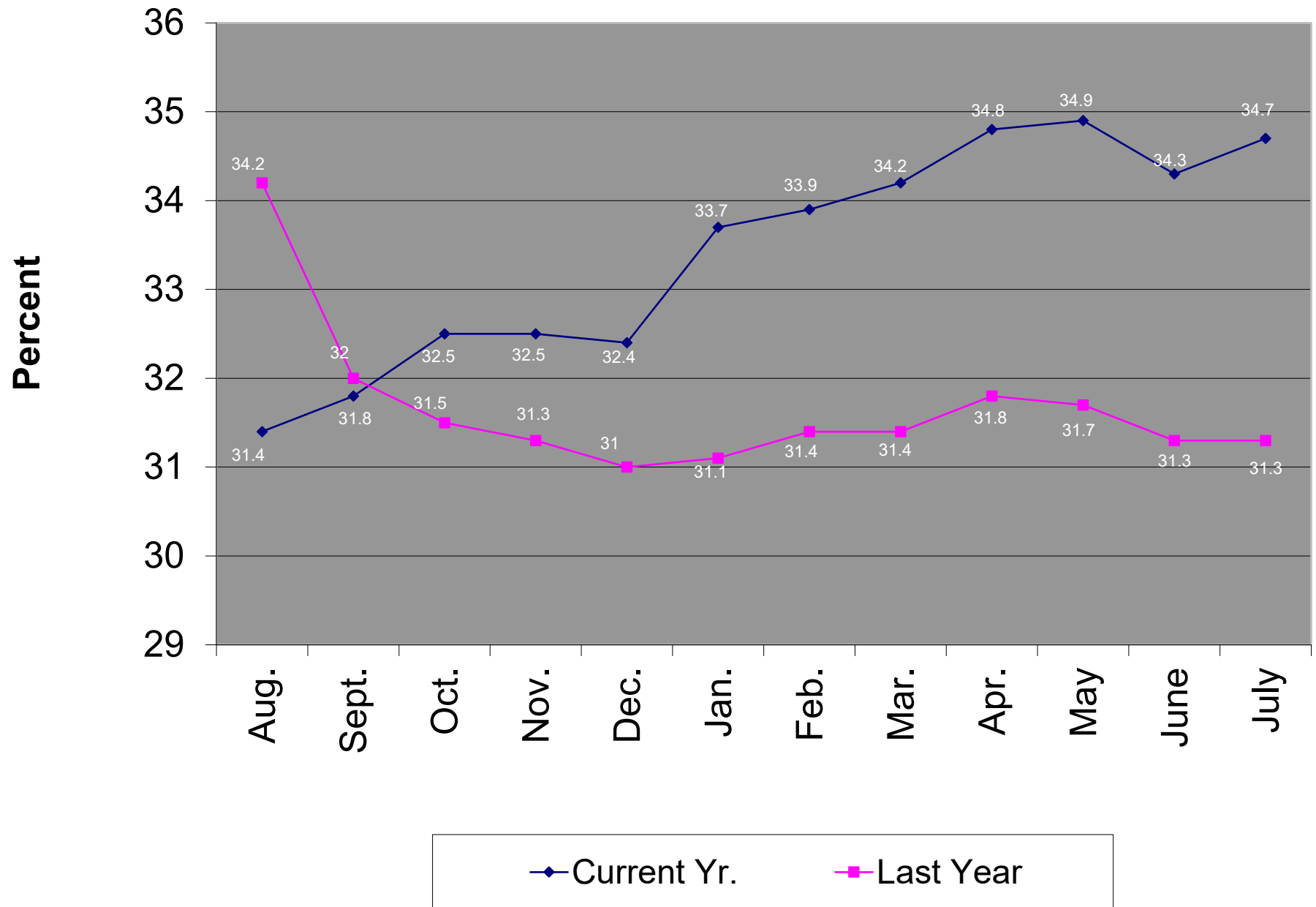
Oper. Exp. in Mills/KWH Sold



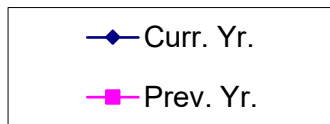
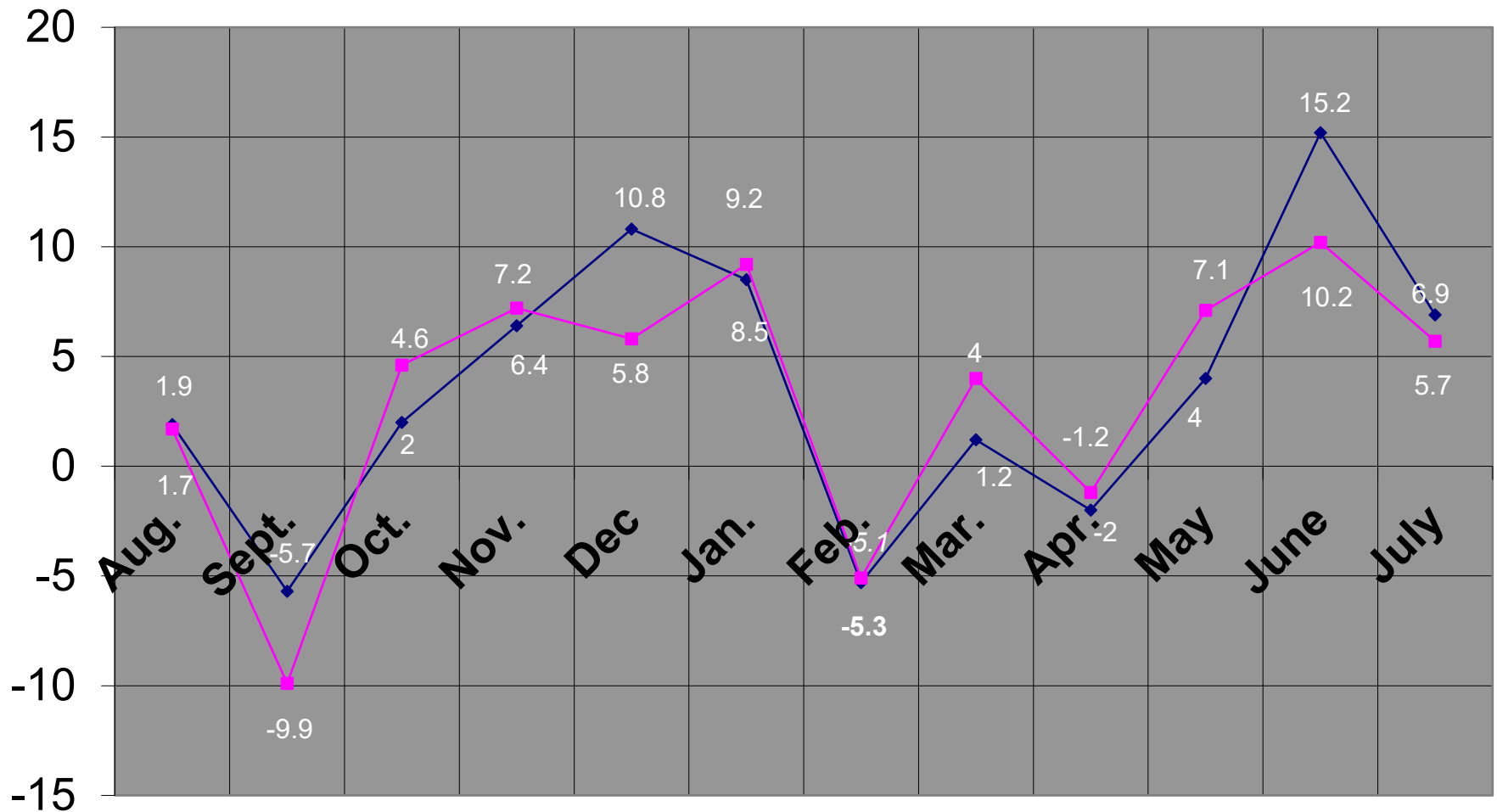
Gross Margin - Oper Exp = Oper Margin



Equity as a % of Total Assets

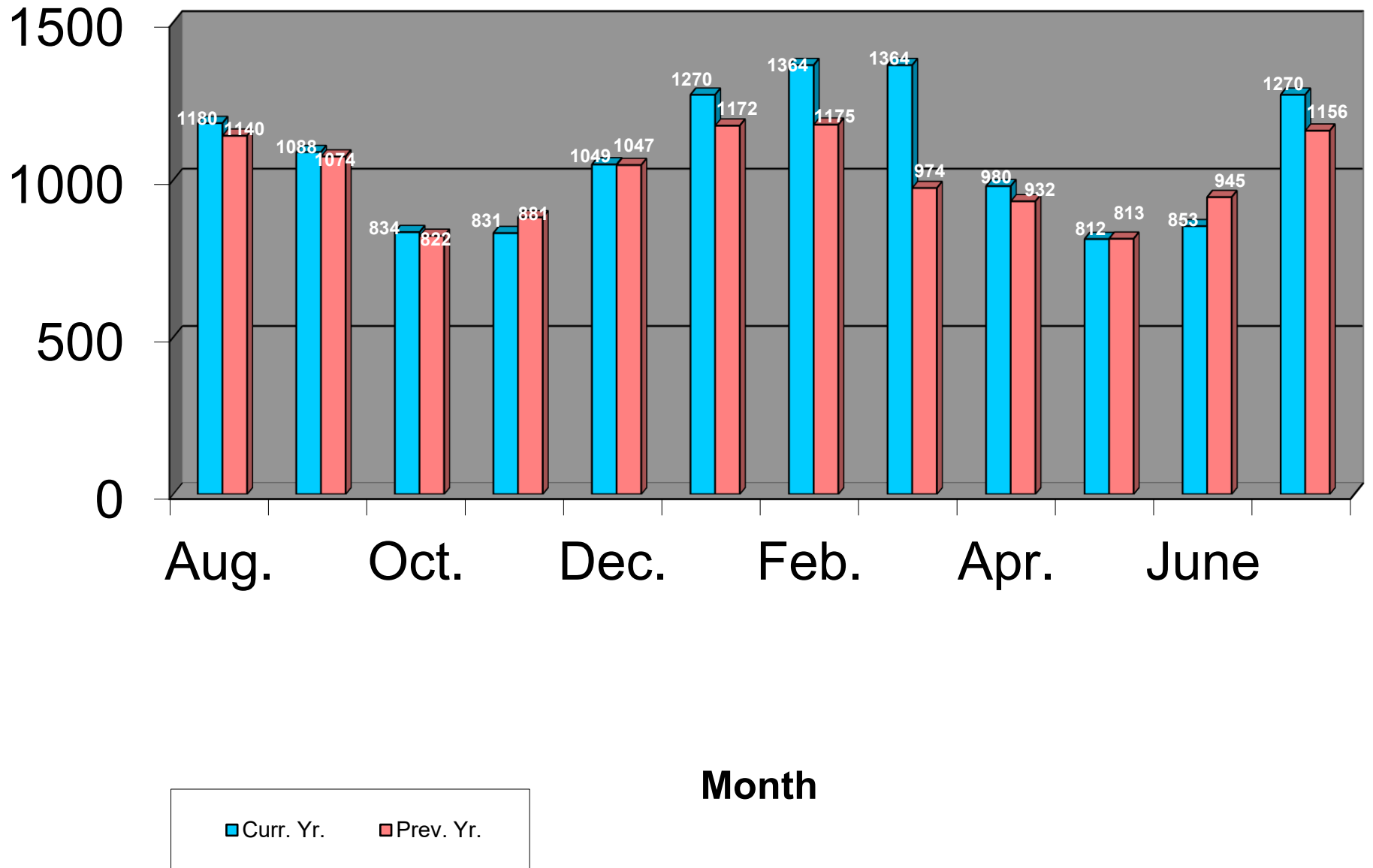


Percent Line Loss

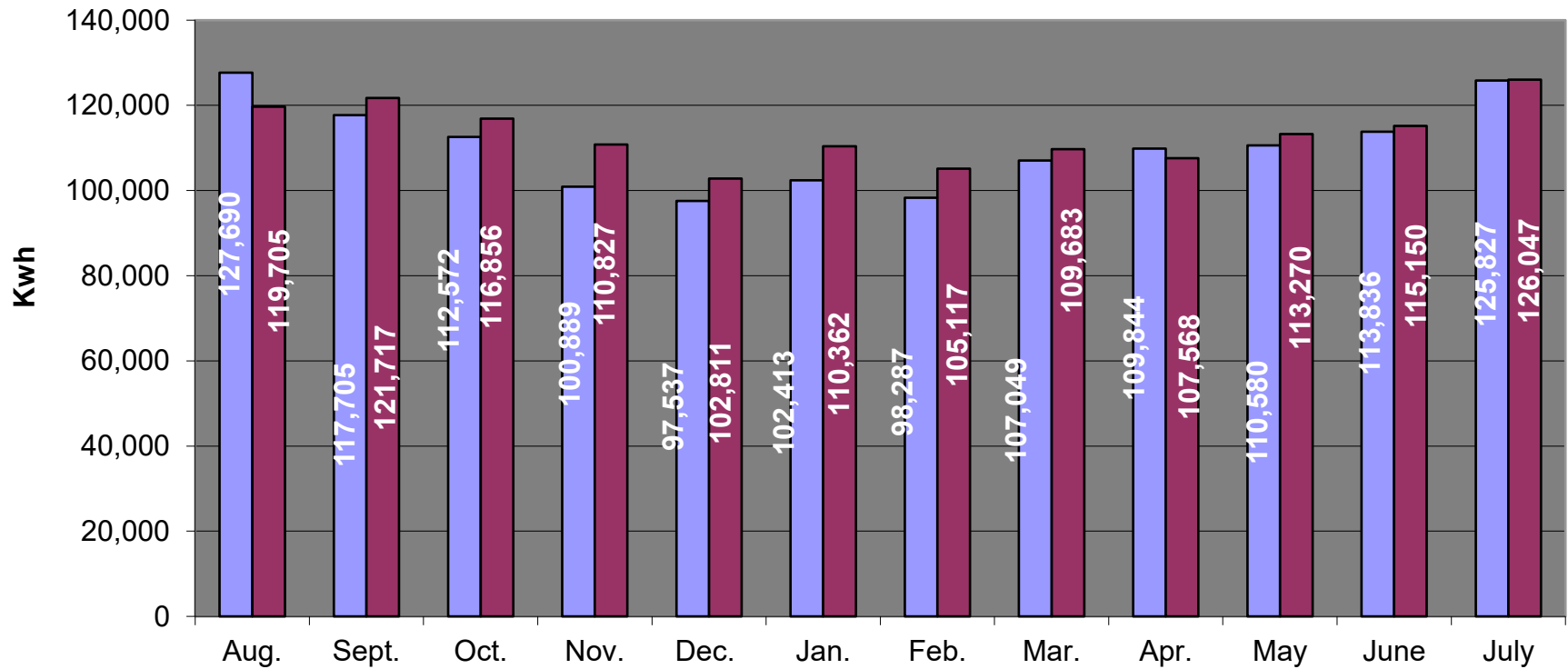


Period Ending

Average Residential Kwh Consumption



C&I Average Consumption



■ Current Year ■ Last Year

STEUBEN CO REMC MONTHLY OUTAGE SUMMARY FOR: JULY 2025

	POWER SUPPLIER	MAJOR STORM	SCHEDULED	ALL OTHER	TOTAL
<u>NO. OF OUTAGES</u> THIS MONTH	0	0	3	143	146
THIS MONTH LAST YEAR	0	0	2	107	109
THIS YEAR TO DATE	0	83	64	698	845
LAST YEAR TO DATE	0	0	15	987	1002
<u>CONSUMER HR. PER</u> THIS MONTH	0	0	12.36	1215.79	1228.15
THIS MONTH LAST YEAR	0	0	2.64	985.56	988.2
THIS YEAR TO DATE	0	3408.22	766.41	17356.38	21531.01
LAST YEAR TO DATE	0	0	711.66	125871.17	126582.8
<u>AVG.HRS PER CON.</u> THIS MONTH	0	0	0.00115	0.11315	0.11431
THIS MONTH LAST YEAR	0	0	0.0002	0.093	0.0932
THIS YEAR TO DATE	0	0.3178	0.0714	1.6187	2.008
LAST YEAR TO DATE	0	0	0.0673	11.9038	11.9711

DATA FOR COMPUTING AVERAGE HOURS PER CONSUMER:

NUMBER OF CONSUMERS SERVED THIS MONTH: 10744

AVERAGE NUMBER OF CONSUMERS THIS YEAR TO DATE: 10722

NUMBER OF CONSUMERS THIS MONTH LAST YEAR: 10582

AVERAGE NUMBER OF CONSUMERS LAST YEAR TO DATE: 10574

Otter Substation

On May 22, 2025 Otter was taken offline due to gassing in the transformer.

We now hope to have it back in service by the end of October. ~~It will take four two ? months to repair.~~

Wednesday, June 18, 2025 we experienced our first big outage effecting nearly 900 members. It took two hours to run and restore.

We also had a hard blink effecting the same accounts on Sunday, June 22nd.

We have made Pine Manor aware of the load shift and the fact we may encroach on their 8 meg for short periods of time. They understood and were ok with the arrangement.

Agenda

Steuben County REMC
Regular Board of Directors Meeting
August 25, 2025

1. Call to Order
2. Roll Call
3. General Consent Items
 - a. Agenda
 - b. Minutes of July 28, 2025 Board Meeting
 - c. Bills
 - d. Director Expenses
 - e. New Hookups
 - f. New Memberships
 - g. IUPPS Update
4. Informative Reports
 - a. CEO Financial Report
 - b. Re-Comm Update
 - c. Operation Round Up
 - d. Safety Meeting
 - e. WVPA Board Meeting
 - f. Member Services Report
 - g. Cyber Security
 - h. Broadband Update
 - i.
 - j.
 - k.
5. Executive Session
 - a.
6. Decisions Needed
 - a.
7. Corporate Council Report
 - a.
8. Other Business
9. Calendar & Announcements
 - a. Next Regular Meeting September 29, 2025
10. Adjournment



Aug. 2025 Board Meeting

2004 Total			\$18,032.48		
2005 Total			\$41,792.07		
2006 Total			\$41,496.82		
2007 Total			\$41,034.09		
2008 Total			\$44,092.37		
2009 Total			\$44,920.33		
2010 Total			\$42,431.35		
2011 Total			\$41,919.61		
2012 Total			\$45,034.33		
2013 Total			\$42,477.23		
2014 Total			\$42,936.08		
2015 Total			\$43,682.99		
2016 Total			\$43,392.79		
2017 Total			\$44,027.97		
2018 Total			\$44,865.15		
2019 Total			\$45,389.98		
2020 Total			\$46,640.50		
2021 Total			\$48,570.78		
2022 Total			\$44,975.76		
2023 Total			\$41,850.76		
2024 Total			\$47,035.91		
2025					
Jan.			\$3,603.12		
Feb.			\$3,579.22		
Mar.			\$3,570.02		
Apr.			\$3,573.07		
May			\$3,585.32		
June			\$3,564.94		
July			\$3,652.55		
Aug	Cycle 4	\$13.26			
	Cycle 1	\$1,043.05			
	Cycle 2	\$1,160.52			
	Cycle 3	\$0.00			
Adj.		\$0.00			
			\$2,216.83		
Total			\$923,944.42		
Membership Participation Level					
Total			10,131		
Participating Accounts			7,498		
Current Participation Rate			74.01%		
Last Months Rate			73.62%		

Agenda

Steuben County REMC
Regular Board of Directors Meeting
August 25, 2025

1. Call to Order
2. Roll Call
3. General Consent Items
 - a. Agenda
 - b. Minutes of July 28, 2025 Board Meeting
 - c. Bills
 - d. Director Expenses
 - e. New Hookups
 - f. New Memberships
 - g. IUPPS Update
4. Informative Reports
 - a. CEO Financial Report
 - b. Re-Comm Update
 - c. Operation Round Up
 - d. Safety Meeting
 - e. WVPA Board Meeting
 - f. Member Services Report
 - g. Cyber Security
 - h. Broadband Update
 - i.
 - j.
 - k.
5. Executive Session
 - a.
6. Decisions Needed
 - a.
7. Corporate Council Report
 - a.
8. Other Business
9. Calendar & Announcements
 - a. Next Regular Meeting September 29, 2025
10. Adjournment

Safety Report
Steuben County REMC
Board of Directors
August 19, 2025

August 6, 2025- Chris Gearld from IEC was here for the August safety meeting with the topic being safety leadership.

There were no injuries or loss of time reported.

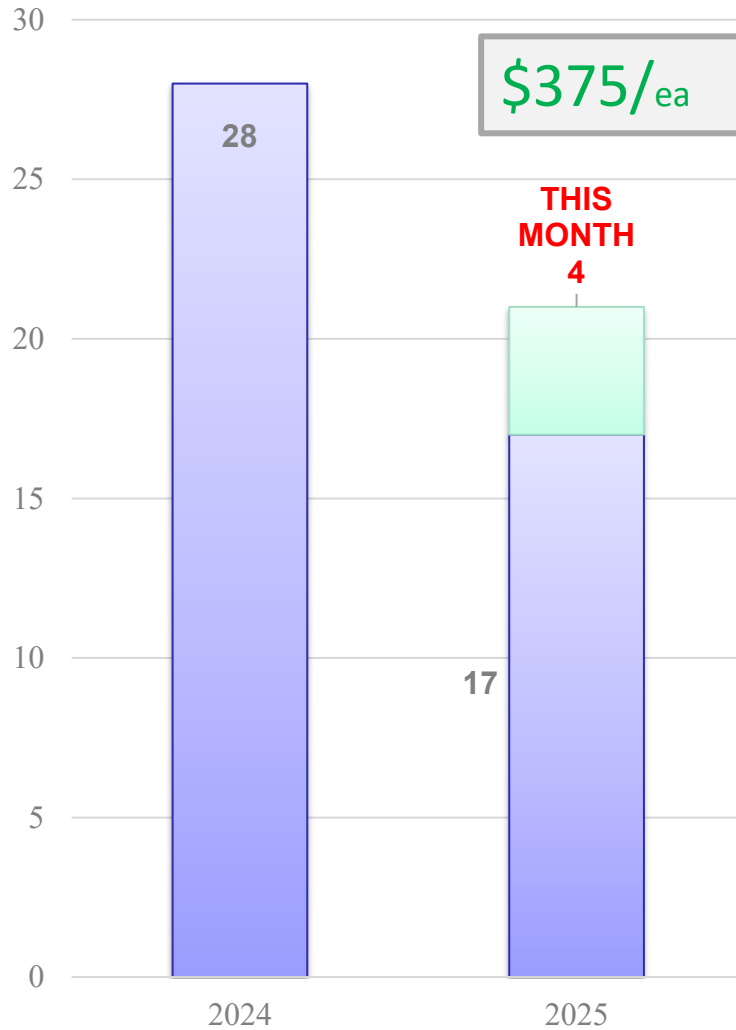
Agenda

Steuben County REMC
Regular Board of Directors Meeting
August 25, 2025

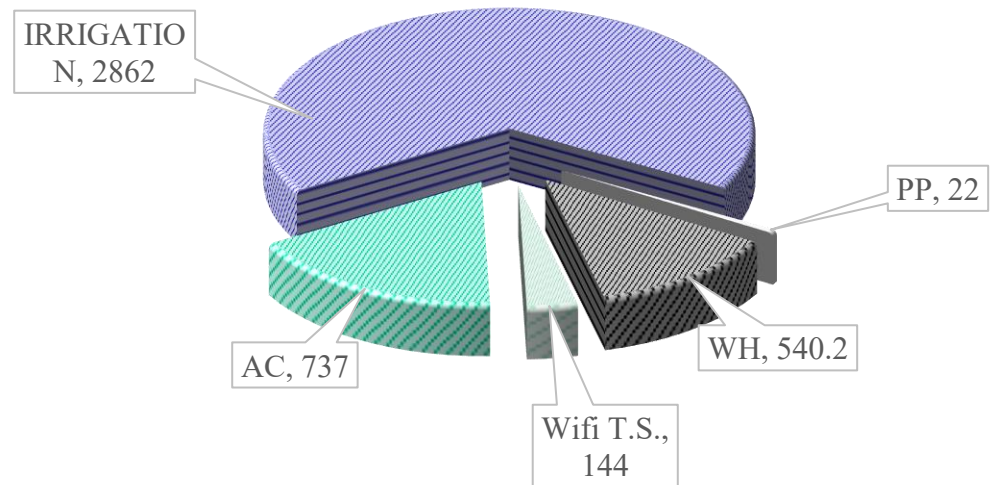
1. Call to Order
2. Roll Call
3. General Consent Items
 - a. Agenda
 - b. Minutes of July 28, 2025 Board Meeting
 - c. Bills
 - d. Director Expenses
 - e. New Hookups
 - f. New Memberships
 - g. IUPPS Update
4. Informative Reports
 - a. CEO Financial Report
 - b. Re-Comm Update
 - c. Operation Round Up
 - d. Safety Meeting
 - e. WVPA Board Meeting
 - f. Member Services Report
 - g. Cyber Security
 - h. Broadband Update
 - i.
 - j.
 - k.
5. Executive Session
 - a.
6. Decisions Needed
 - a.
7. Corporate Council Report
 - a.
8. Other Business
9. Calendar & Announcements
 - a. Next Regular Meeting September 29, 2025
10. Adjournment

MARKETING & MEMBER SERVICES

WATER HEATER SALES

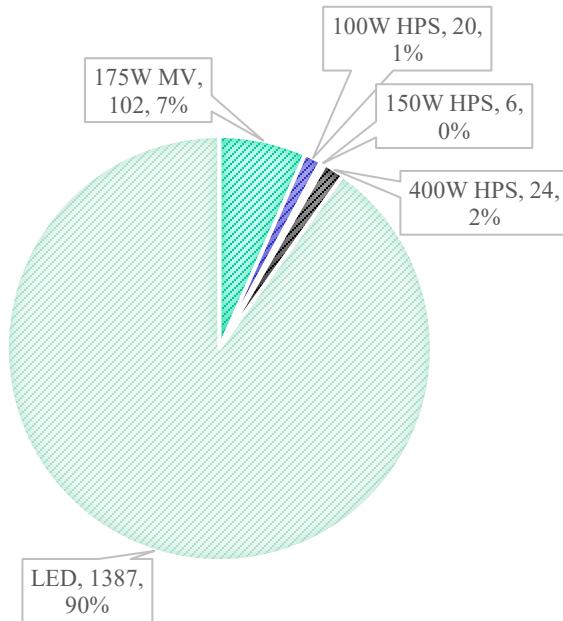


LOAD MANAGEMENT – KW 4197.2 KW



MARKETING & MEMBER SERVICES

SECURITY LIGHTS AS OF 1/2025



2025
**SECURITY
LIGHT**
INSTALLS/REMOV
ALS
2- REMOVALS
(0) this month
2 - NEW
(0) this month
9 - SWAP/ MAINT.
(0) this month



9 Members

122 Units
(NO CHANGE)



EV CHARGER STATISTICS
3467 VEHICLES CHARGED
14,884 kWh's CONSUMED
6.33 HRS - AVG SESSION

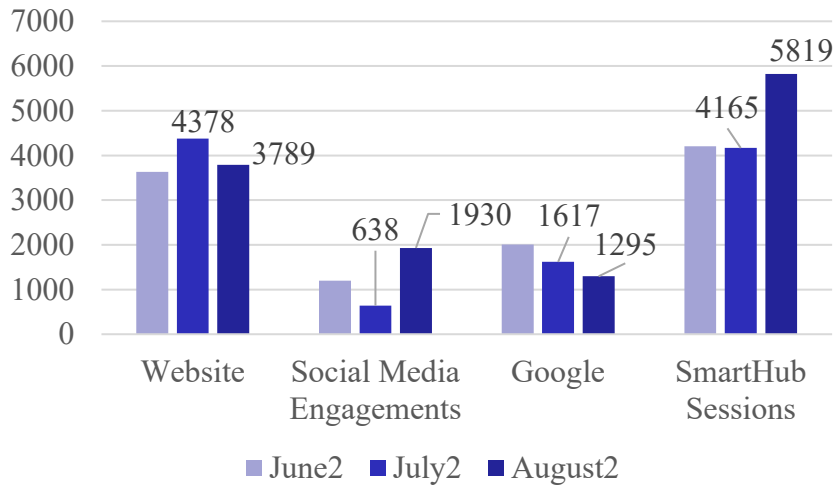
29 VEHICLES CHARGED
915 kWh's CONSUMED

MARKETING & MEMBER SERVICES

INCLUDES PMT,
VIEW BILL, VIEW
USAGE, ECT...
9613 Subscribers



Member Engagement

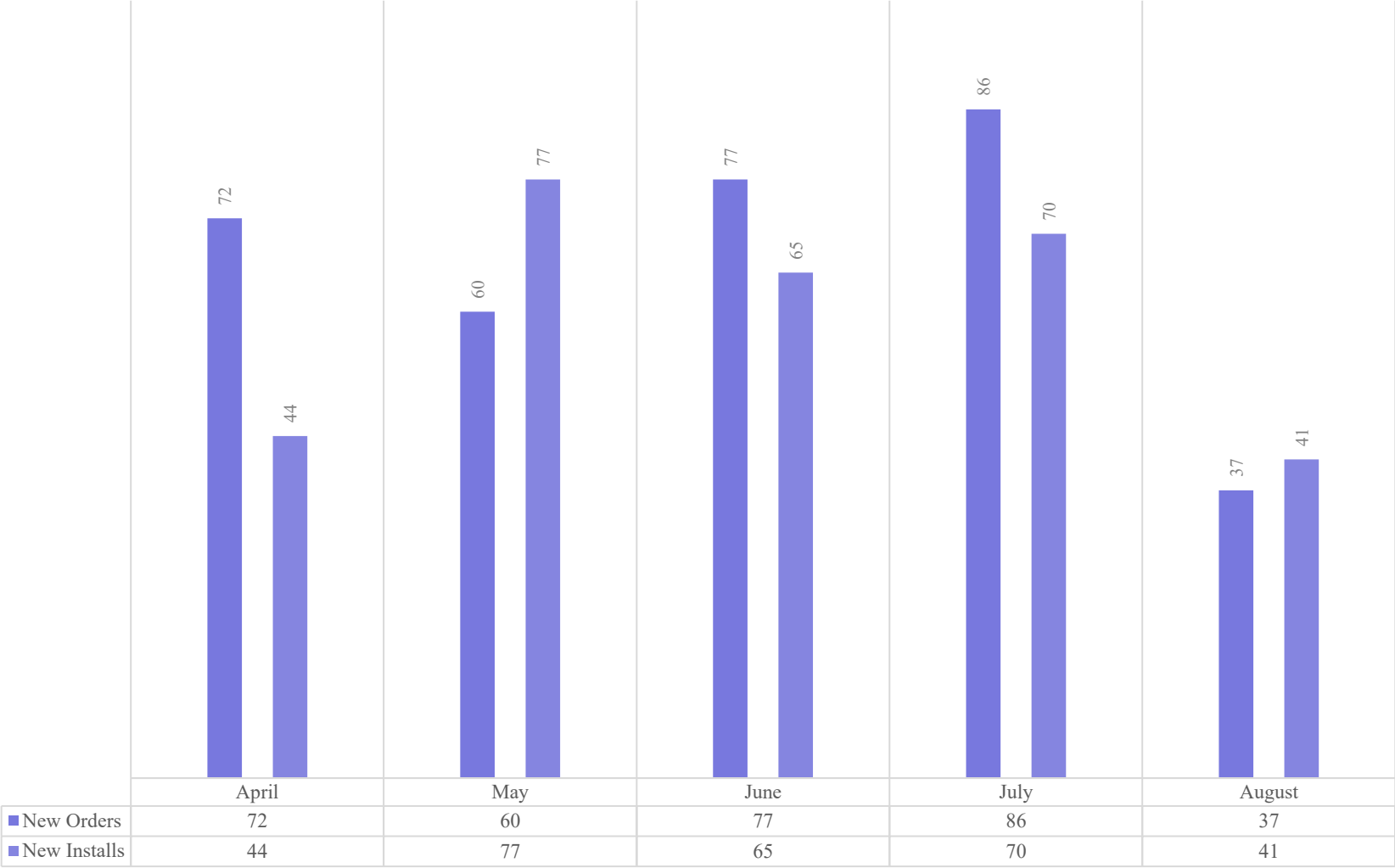


Website

1	Home Steuben County REMC	2,619 (41.78%)
2	Storm/ Outage Center Steuben County REMC	852 (13.59%)
3	Packages/ Pricing Steuben County REMC	470 (7.5%)
4	Check Availability Steuben County REMC	297 (4.74%)
5	SmartHub Steuben County REMC	285 (4.55%)
6	Contact Us Steuben County REMC	237 (3.78%)
7	How to make a payment Steuben County REMC	192 (3.06%)
8	Log in Steuben County REMC	125 (1.99%)
9	Board of Directors Steuben County REMC	117 (1.87%)
10	Rebate Programs Steuben County REMC	115 (1.83%)

NEW ORDERS/INSTALLS

New Orders New Installs



BROADBAND TAKE RATE PER ZONE

8.15.2025								
	Zone	Marketing Zone	Active	Pending	8.15	NEW	Total Members	% Take
PHASE 1	1	OTTER NORTHWEST	90	3	93	4	118	79%
	2	OTTER NORTHEAST	374	2	376	7	632	59%
	3	OTTER SOUTH	708	10	718	15	973	74%
	4	ORLAND MP	210	4	214	17	361	59%
	5	HELMER MP	142	5	147	8	197	75%
PHASE 2	6	NEVADA NORTH	221	2	223	12	382	58%
	7	NEVADA NORTHEAST	370	8	378	23	874	43%
	8	NEVADA WEST	422	11	433	24	1110	39%
	9	NEVADA EAST	243	1	244	3	519	47%
PHASE 3	10	SCOTT NORTHWEST	324	2	326	8	549	59%
	11	SCOTT WEST, NORTHEAST, SOUTH	80	5	85	10	166	51%
	12	RUHL	212	0	212	-3	404	52%
	13	ANGOLA N&W	257	2	259	12	427	61%
	14	SCOTT EAST	422	9	431	16	738	58%
PHASE 4	15	ANGOLA SOUTH	224	2	226	10	374	60%
	16	STEUBENVILLE	190	4	194	9	423	46%
	17	WATERLOO	62	2	64	6	177	36%
P2P			220	3	223	2		
Total			4771	75	4846	183	8424	58%

OTHER UPDATES

SOLAR

- FREMONT COMMUNITY CHURCH (COMMERCIAL/ UNDER 25KW)
 - 10KW AC TENTATIVE
 - INQUIRY RECEIVED FROM CONTRACTOR
 - **COMPLETED 7.17**
- COREY SHAFFER – 1495 S 750 W (RESIDENTIAL)
 - 10.7KW AC
 - **INTERCONNECTION SIGNED/ WAITING ON PMT**

Agenda

Steuben County REMC
Regular Board of Directors Meeting
August 25, 2025

1. Call to Order
2. Roll Call
3. General Consent Items
 - a. Agenda
 - b. Minutes of July 28, 2025 Board Meeting
 - c. Bills
 - d. Director Expenses
 - e. New Hookups
 - f. New Memberships
 - g. IUPPS Update
4. Informative Reports
 - a. CEO Financial Report
 - b. Re-Comm Update
 - c. Operation Round Up
 - d. Safety Meeting
 - e. WVPA Board Meeting
 - f. Member Services Report
 - g. Cyber Security
 - h. Broadband Update
 - i.
 - j.
 - k.
5. Executive Session
 - a.
6. Decisions Needed
 - a.
7. Corporate Council Report
 - a.
8. Other Business
9. Calendar & Announcements
 - a. Next Regular Meeting September 29, 2025
10. Adjournment

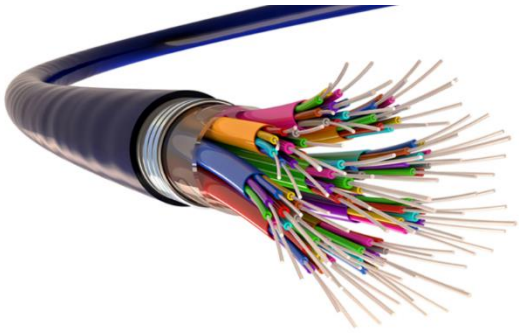
Cyber Security

Other than the usual updates for NISC, SCADA and Tantalus there is nothing new to report in the area of cyber security.

Agenda

Steuben County REMC
Regular Board of Directors Meeting
August 25, 2025

1. Call to Order
2. Roll Call
3. General Consent Items
 - a. Agenda
 - b. Minutes of July 28, 2025 Board Meeting
 - c. Bills
 - d. Director Expenses
 - e. New Hookups
 - f. New Memberships
 - g. IUPPS Update
4. Informative Reports
 - a. CEO Financial Report
 - b. Re-Comm Update
 - c. Operation Round Up
 - d. Safety Meeting
 - e. WVPA Board Meeting
 - f. Member Services Report
 - g. Cyber Security
 - h. Broadband Update
 - i.
 - j.
 - k.
5. Executive Session
 - a.
6. Decisions Needed
 - a.
7. Corporate Council Report
 - a.
8. Other Business
9. Calendar & Announcements
 - a. Next Regular Meeting September 29, 2025
10. Adjournment



BROADBAND UPDATE

AUGUST 2025

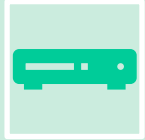


SERVICE INSTALLATION REPORT

		PTP COUNT	258
	NEW ORDERS HISTORICAL AVERAGE		15.65822785
	AVERAGE NEW ORDERS /WEEK (LAST TWO MONTHS)		18
		TODAY	8/20/2025
	DAYS LEFT IN THE YEAR		133
	WEEKS LEFT IN THE YEAR		19
	PROJECTED NEW ORDERS		342
	TOTAL PROJECTED ACTIVE ACCOUNTS		5231
	TOTAL PROJECTED ACTIVE FTTH MEMBERS		4973
	PROJECTED TAKE RATE		60%
	FULL ACTUAL TAKE RATE		55.71%
	FTTH ACTUAL TAKE RATE		54.36%

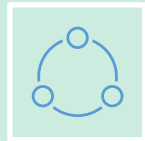
- **SERVICE INSTALLATIONS TO DATE:**
 - 4837 ACTIVE SUBSCRIBERS AS OF 8/20/25.
- **RUN RATE**
 - NEW ORDERS WEEKLY AVERAGE HAS RISEN SLIGHTLY FROM 17 LAST MONTH TO 18 THIS MONTH. AVERAGE WEEKLY INSTALLS REMAIN STEADY AT 16-20 PER WEEK.

FTTH STATUS REPORT



BANDWIDTH INCREASE.

20Gb REDUNDANT CIRCUIT SPLICING COMPLETED AND “LANDED” AT PSB. ORDERING OPTICS AND PATCH CABLES TO CONNECT TO OUR END.



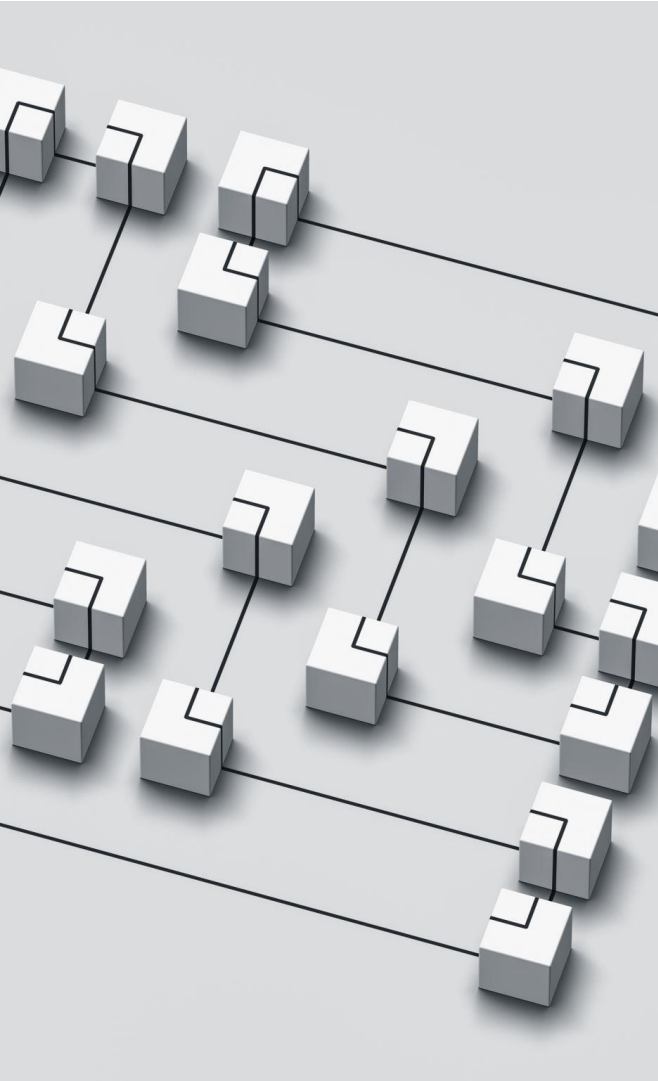
CONTRACT FIBER TECH

CONTRACT INSTALLER BROUGHT IN TO SUPPLEMENT / MEET SCHEDULING



SERVICE WIRE CONTRACTOR

DEMANDS. NEW CONTRACTOR BROUGHT IN (RITCHIE INSTALLATION) TO REPLACE EXISTING CONTRACTOR.



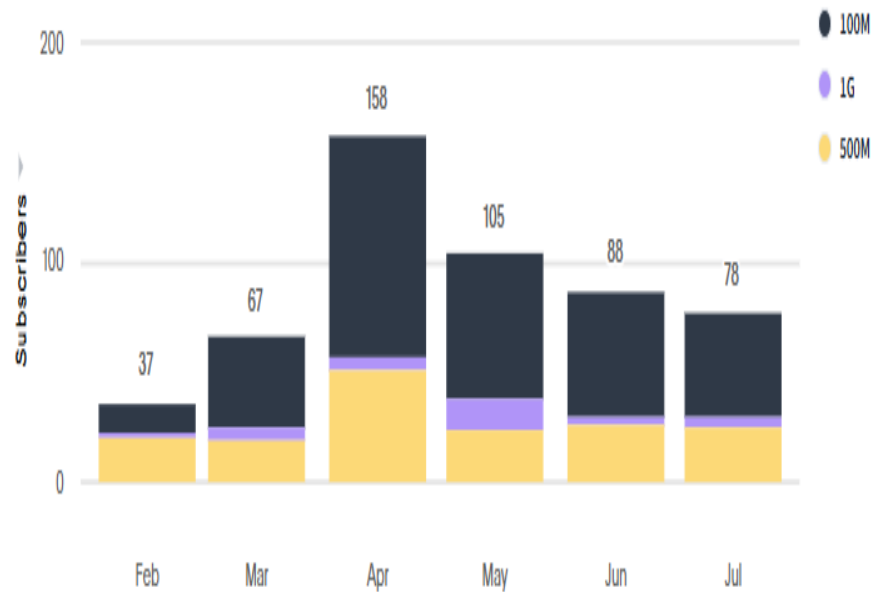
P2P STATUS REPORT

- P2P NETWORK UPDATE.
 - 2 NEW ORDERS RECEIVED FROM i-NET.
 - PSB RACK SPACE LEASE TO BE DISCUSSED WITH i-NET AND AN AGREEMENT WILL NEED TO BE CREATED THAT DEFINES THE STIPULATIONS OF THEM OCCUPYING OUR SPACE.

SUBSCRIBER STATISTICS

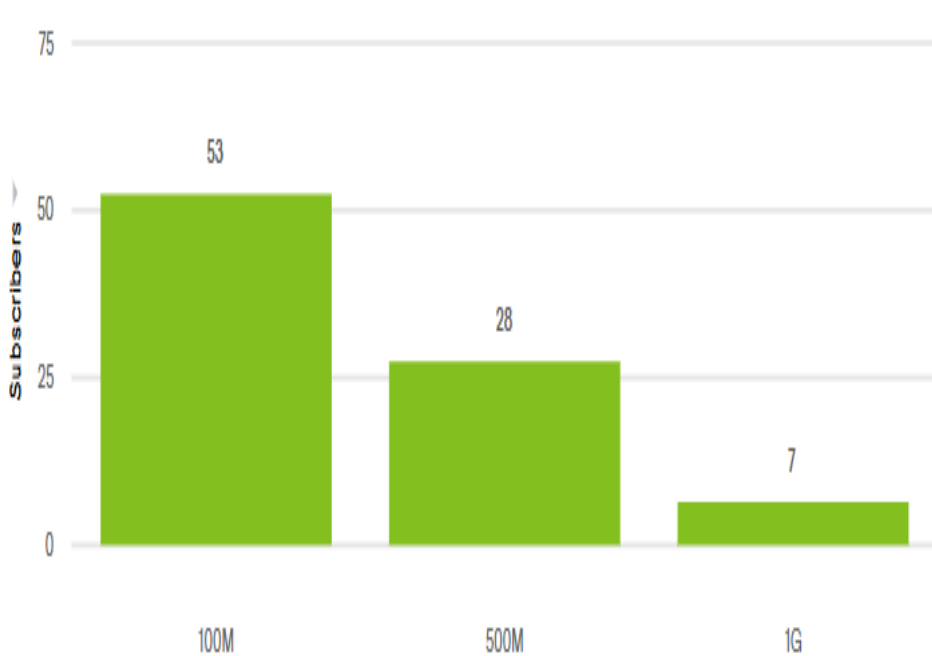
CONTINUING TO SEE AN UPTICK IN SUBSCRIBER COUNT

Acquisition Rate & Insights



↑
for 2025

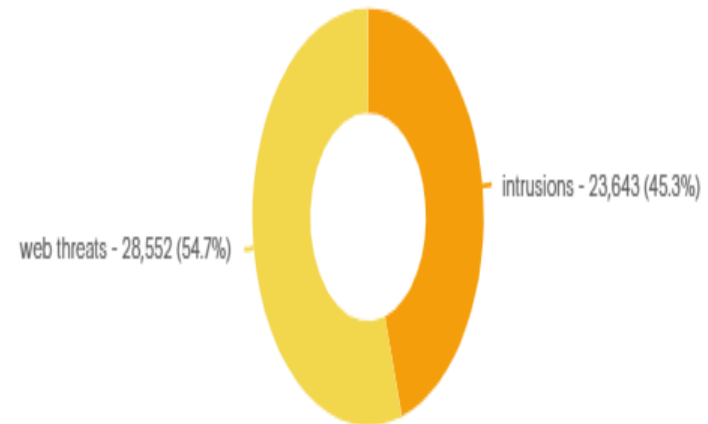
New Subscribers by Service Tier & Technology



STATISTICS CONT'D

- IN THE LAST TWO MONTHS WE HAVE BLOCKED 28,552 WEB THREATS AND 23,643 INTRUSIONS AND 0 VIRUSES FOR OUR MEMBERS

Blocked Threats Insights



CALL CENTER STATISTICS

CALLS REFERRED BACK TO US DURING BUS. HOURS	42
CHECKING ON AN EXISTING TICKET	2
ESCALATED TO BUSINESS OFFICE	55
AFTER HOURS ESCALATED TO DAVE	7
CALL CENTER RESOLVED	50
DISCONNECTED BEFORE ANSWERED	2
OUTAGE RELATED SERVICE ORDERS	47

Agenda

Steuben County REMC

Regular Board of Directors Meeting

July 28, 2025

1. Call to Order
2. Roll Call
3. General Consent Items
 - a. Agenda
 - b. Minutes of June 30, 2025 Board Meeting
 - c. Bills
 - d. Director Expenses
 - e. New Hookups
 - f. New Memberships
 - g. IUPPS Update
4. Informative Reports
 - a. CEO Financial Report
 - b. Re-Comm Update
 - c. Operation Round Up
 - d. Safety Meeting
 - e. WVPA Board Meeting
 - f. Member Services Report
 - g. Cyber Security
 - h. Broadband Update
 - i. Committee Appointments for 2025-2026
 - j. KRTA
 - k.
5. Executive Session
 - a.
6. Decisions Needed
 - a. CFC Voting Delegate
7. Corporate Council Report
 - a.
8. Other Business
9. Calendar & Announcements
 - a. Next Regular Meeting August 25, 2025
10. Adjournment

ANNUAL MEETING

DISTRICTS UP FOR ELECTION

2026	District 1	Gary Shough
	District 2	Gus Reed
	District 9	Marc Nelson
2027	District 4	Mike Kurtz
	District 5	Carter Snider
	District 8	Larry Jack
2028	District 3	Keith Keller
	District 6	Neasa Kalme
	District 7	Kyle Stockwell

Standing Committees until July 2026

Annual Meeting

Keith Keller
Neasa Kalme
Kyle Stockwell

Capital Credits

Mike Kurtz
Carter Snider
Larry Jack

Labor

Gary Shough
Gus Reed
Marc Nelson

Broadband Committee

Marc Nelson
Neasa Kalme
Carter Snider

By-Law Committee

Mike Kurtz
Kyle Stockwell
Keith Keller

Agenda

Steuben County REMC

Regular Board of Directors Meeting

July 28, 2025

1. Call to Order
2. Roll Call
3. General Consent Items
 - a. Agenda
 - b. Minutes of June 30, 2025 Board Meeting
 - c. Bills
 - d. Director Expenses
 - e. New Hookups
 - f. New Memberships
 - g. IUPPS Update
4. Informative Reports
 - a. CEO Financial Report
 - b. Re-Comm Update
 - c. Operation Round Up
 - d. Safety Meeting
 - e. WVPA Board Meeting
 - f. Member Services Report
 - g. Cyber Security
 - h. Broadband Update
 - i. Committee Appointments for 2025-2026
 - j. KRTA
 - k.
5. Executive Session
 - a.
6. Decisions Needed
 - a. CFC Voting Delegate
7. Corporate Council Report
 - a.
8. Other Business
9. Calendar & Announcements
 - a. Next Regular Meeting August 25, 2025
10. Adjournment

September 2025

The power of human connections

Steuben County REMC

Schedule of Events

- **Sept. 2-** The Cooperative office will be closed for Labor Day.
- **Sept. 3-6** NRECA Regional Meeting will be held in Providence, RI. Kevin and Carter plan to attend.
- **Sept. 10-** Wabash Valley Power will be holding their regular Board of Directors meeting beginning at 1:00 p.m. at the Cooperative office.
- **Sept. ??-** The safety meeting has not yet been scheduled.
- **Sept. 30-** Steuben County REMC's regular Board of Director's meeting beginning at 600 p.m.

Sun	Mon	Tue	Wed	Thu	Fri	Sat
	1 Office Closed	2	3 NRECA Regional Mtg. Providence RI.	4	5	6
7	8	9	10 WVPA B-Mtg.	11	12	13
14	15	16	17	18	19	20
21	22	23	24	25	26	27
28	29 REMC B-Mtg.	30				

P.O. Box 359
1212 S Wayne Street
Angola IN 46703

Phone: 260/665-3563
Fax: 260/665-7495
Email: remcsteuben@remcsteuben.com

