

Steuben County REMC's

INDIANA CONNECTION

2024 Official Annual Meeting Notice

Steuben County REMC

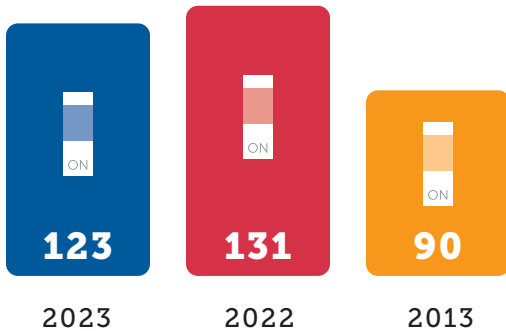
A Touchstone Energy Cooperative 

MAY 2024

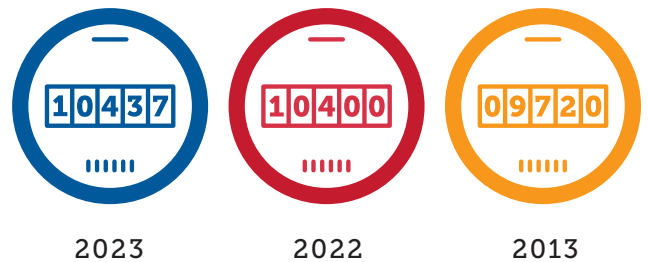
BY THE NUMBERS

ELECTRIC

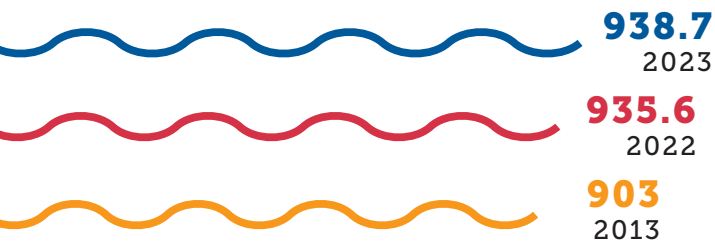
NEW SERVICES ADDED



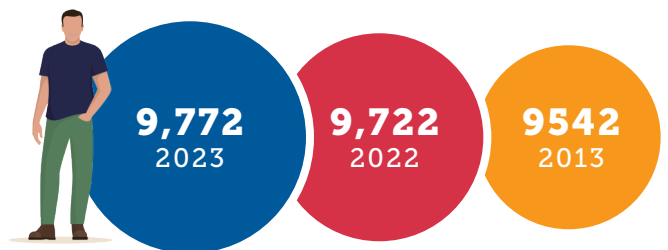
TOTAL NUMBER OF METERS



TOTAL MILES OF LINE



TOTAL NUMBER OF MEMBERS

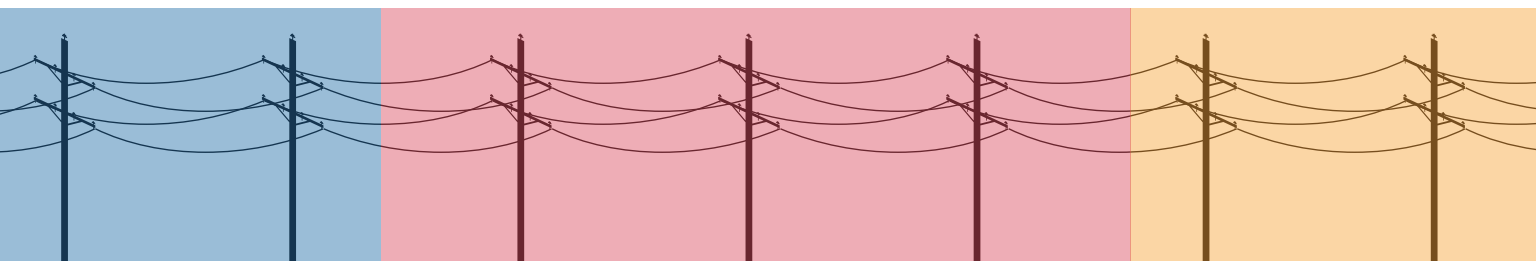


MILES OF LINE ADDED

3.1
2023

6.1
2022

3.3
2013



Steuben County REMC's


INDIANA CONNECTION



Voting opens May 6

DETAILS START ON PAGE 5

Steuben County REMC

A Touchstone Energy® Cooperative 

MAY 2024

2024 ANNUAL MEETING OFFICIAL NOTICE

You're invited

The 2024 Steuben County REMC Annual Meeting will be broadcast on June 8 on YouTube, Facebook, or remcsteuben.com.

Subscribe to our YouTube channel for the first notice of election results.



TIMELINE

MAY 6 (MONDAY)
Voting opens

JUNE 3 (MONDAY)
Last chance to mail in
paper ballots

JUNE 6 (THURSDAY)
Voting closes

JUNE 8 (SATURDAY)
Election results and
grand prize winners
video announced on
YouTube

**Weekly videos from your board with the weekly bill credit winners starting May 10*



A Touchstone Energy[®] Cooperative

Office Hours

7:30 a.m.–4:30 p.m.
Monday–Friday

Contact Us

PHONE

260-665-3563

Call our office 24/7/365
to report an outage.

STREET ADDRESS

1212 S. Wayne St., Angola, IN 46703

MAILING ADDRESS

P.O. Box 359, Angola, IN 46703

EMAIL

CEO@remcsteuben.com
remcsteuben@remcsteuben.com

WEBSITE

remcsteuben.com

Call Before You Dig

Please call 811 at least two days
before you dig.

Management Team

KEVIN KEISER, CEO

DUSTIN EVERETTS,
Operation/Engineering

JOSHUA DURBIN, Member Services

STEVE SMITH, Finance

DAVE SHORT, Broadband Operations

How to Understand Your Electric Bill

Facilities charge.....\$19/month
First 250 kWh.....9.9 cents per kWh
Next 750 kWh.....9.1 cents per kWh
All over 1,000 kWh.....8.3 cents per kWh
Wholesale power tracker...+\$0.021329 per kWh
Dusk to Dawn Light.....\$10.30/month
Indiana Sales Tax.....7%

Board of Directors

GARY SHOUGH, Secretary/Treasurer
(District 1, Millgrove and Greenfield townships)

SAMUEL "GUS" REED
(District 2, Jamestown Township)

BILL SNYDER
(District 3, Fremont and
Clear Lake townships)

MIKE KURTZ
(District 4, Jackson Township)

CARTER SNIDER
(District 5, Pleasant Township)

NEASA KALME
(District 6, Scott and York townships)

WAYNE GINGERICH, President
(District 7, Salem Township)

LARRY JACK, Vice President
(District 8, Steuben, Smithfield
and Grant townships)

MARC NELSON
(District 9, Otsego, Richland
and Franklin townships)

Disconnection Charges: Electric

**DISCONNECT DATES ARE
2.5 WEEKS AFTER DUE DATE**

Reconnection Charge: \$50
(7:30 a.m.–4 p.m.)

Reconnection Charge: \$200 (after 4 p.m.)

Deposit: \$200

Returned check fee: \$25

Disconnection Charges: Broadband

**DISCONNECT DATES ARE
THE 9TH OF EVERY MONTH**

Reconnection Charge: \$60

Returned check fee: \$25

CEO REPORT



KEVIN KEISER,
CEO

We have celebrated numerous significant achievements throughout Steuben County REMC's 87-year history. However, the completion of the broadband fiber network in December of last year may have just topped them all. Now, northeast Indiana has a reliable not-for-profit broadband network capable of not only meeting our current communication and data needs but also our children's and grandchildren's.

To get to this point, a lot of hard work had to take place from the board of directors, engineers, and operation personnel to plan, design, and build a network equal to or better than our neighbors living in any urban area. Today, our members have a high-speed internet option without limitations or concerns for future technological changes. With our total fiber optic system, we will be able to keep pace with new and developing trends in education, economic development, health care, and entertainment, which separates us from most other rural areas of Indiana.

The physical construction of this network started in the summer of 2022, and at the time, we thought it would take three to four years to complete. However, our board and membership interest continued to grow, and after just 18 months, the system was complete. It includes

over 655 miles of primary fiber line with three communication huts and two direct internet access points connecting northeast Indiana to the outside world. We currently have 3,750 members connected, or in the process of being connected, to the network and we are receiving three to five new service requests each business day. Should this level of interest continue, we anticipate having nearly 5,000 accounts by this time next year.

As you can imagine, building this kind of infrastructure can be costly, and thanks to the pandemic and the inflationary pressures our nation experienced in recent years, the project did come in higher than we anticipated at \$32 million, thus reducing equity to 31.5%. So, now that the hard part is behind us, we can focus on getting this valuable service to as many members as possible and, in doing so, improve their quality of life and get the network to operate independently and replenish our equity.

However, it will take some time, and even with the most advanced network in the area, we will still face challenges in some locations, primarily from for-profit companies with dated infrastructure and questionable business practices. Many of them recently began advertising low monthly rates, which, if you look closely, include hook-up charges, modem rental,

hidden fees, and contracts, allowing the rates to increase sharply in just a few months. Remember, these are the same companies that for years did little to improve their level of service and, like the investor-owned electric utilities of the 1930s and 40s, were only interested in maximizing their profits by leaving the countryside under-served and in the dark, which is why your not-for-profit cooperative exists. Don't let them trick you into thinking that all of that has changed, and they are now interested in giving you low-price, top-of-the-line service. They could have done that years ago.

On the electric side of your cooperative, we remain committed to providing you with the best service possible day in and day out. In February 2023, our commitment to this effort was tested when our region was hit with a devastating ice storm. The storm covered some areas with as much as three-quarters of an inch of heavy ice and caused widespread outages throughout our service territory. As a result, the restoration process took three long days to complete, and I can't thank all of the employees enough for their hard work and dedication. In addition to our employees, we also had six outside operation crews helping us from four neighboring cooperatives and a subcontractor.

Steuben County REMC news

CAST YOUR BALLOT TO BE ENTERED TO WIN PRIZE DRAWINGS!



250 QTY.

\$25 bill credit

FIVE QTY.

Indiana State Park annual passes

FOUR QTY.

Blink camera/doorbell bundles

(\$100 equivalent)

THREE QTY.

Shark robot vacuums

(\$350 equivalent)

TWO QTY.

PS5 gaming consoles

(\$500 equivalent)

ONE QTY.

YouTube Live 1-year subscription

(\$1,000 equivalent)



By the time all was said and done, our recovery cost approached \$250,000 and ranks as the largest outage event we have experienced in over 25 years.

In addition, many of the challenges we have mentioned over the last few years regarding generation and transmission remain. We continue to see a transition from coal and gas to renewable resources like wind and solar that simply don't have the same capacity and availability, making it more difficult to meet our peak load requirements in both the winter and summer.

Further complicating this issue is the MISO or regional transmission organizations' lengthy lead times for approval and construction of new generation and transmission facilities, which currently stands at eight years. There are no signs of immediate relief to this problem.

In response to this challenge, your cooperative — in collaboration with our wholesale power provider, Wabash Valley Power — is planning to take a proactive step toward the problem by introducing a new whole-house generating program to reduce our peak loads. We hope to have all the details for the program worked out by this summer. Enrollment information will follow soon.

Financially, your cooperative ended 2023 in a solid position, with margins of about \$280,000 less our G&T capital credit allocation. Our retail rates continue to be among the most competitive in the region.

YOUR BOARD OF DIRECTORS

DISTRICT 1: Gary Shough

DISTRICT 2: Gus Reed

DISTRICT 3: Bill Snyder

DISTRICT 4: UP FOR ELECTION

Mike Kurtz, incumbent
Ken Wilson

DISTRICT 5: UP FOR ELECTION

Carter Snider, incumbent

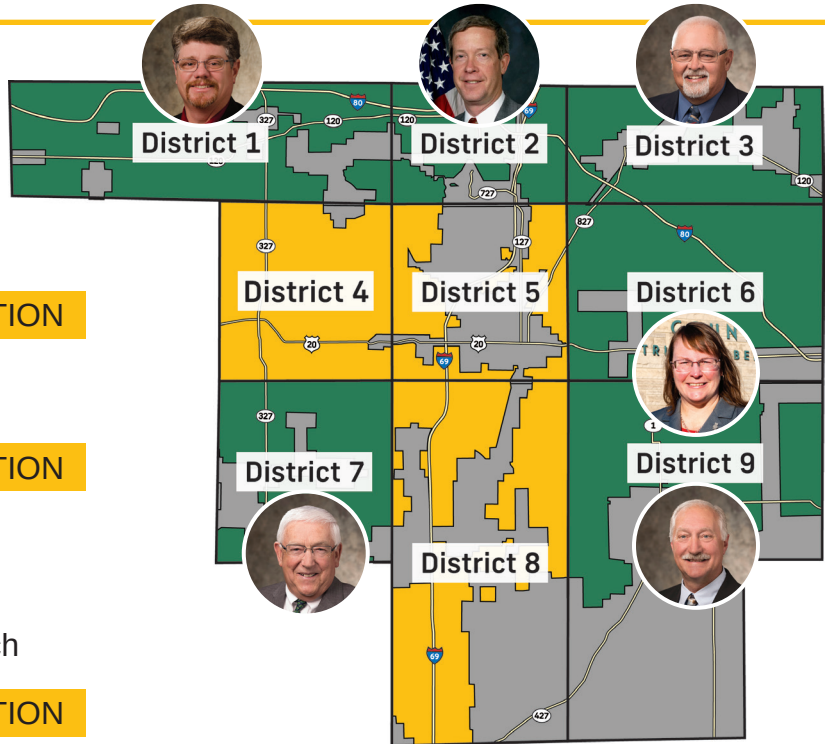
DISTRICT 6: Neasa Kalme

DISTRICT 7: Wayne Gingerich

DISTRICT 8: UP FOR ELECTION

Larry Jack, incumbent
Don Wittkamp

DISTRICT 9: Marc Nelson



3 WAYS TO VOTE

At Steuben County REMC, the process of electing your board of directors is a priority. For this reason, we provide you with three convenient ways to cast your vote in the election. You are able to vote by mail or online prior to the meeting. Beginning May 3, ballots will be mailed to you.



 **MAIL IN**  **VOTE ONLINE**  **IN PERSON** **BALLOTS MAILED MAY 3**

Your guide to voting

At Steuben County REMC, the process of electing your board of directors is a priority. For this reason, we provide you with three convenient ways to cast your vote in the election. You are able to vote by mail or online prior to the meeting. Beginning May 3, ballots similar to the one featured below will be mailed to you. To help you understand how to vote online or by mail, please review the instructions below.

VOTING INSTRUCTIONS

VOTING BY MAIL


- Mark your selection by completely filling in the box.
- Detach ballot and place in the enclosed return envelope. Mail to Survey & Ballot Systems 7653 Anagram Drive Eden Prairie, MN 55344
- Do NOT include bill payment in the return envelope.
- Ballots must be received by June 6, 2024.
- Please allow sufficient time for delivery.

VOTING ONLINE

- To access the login page of the official 2024 SCREMC Election, please type directvote.net/SCREMC into the address bar located at the top of your internet browser screen.
- Above and to the left is your Member Number and your Election Passcode. Use both of these numbers to log in.
- Once registered, follow the online voting instructions.
- Online voting begins on May 6, 2024, and ends at 11:59 p.m. ET, June 6, 2024.
- Do not mail your ballot if you plan to vote online.

VOTING BY SMARTHUB

- App: Open your SmartHub app, login and click the Vote Now button.
- Online: Login to your SmartHub online account and click the Vote Now button.
- Online voting begins on May 6, 2024, and ends at 11:59 p.m. ET, June 6, 2024.
- Do not mail your ballot if you plan to vote online.
- If you have any problems voting online, please email support@directvote.net or call 952-974-2339.



Voting Instructions

Voting by Mail

- Mark your selection by completely filling in the box.
- Detach ballot and place in the enclosed return envelope. Mail to Survey & Ballot Systems, 7653 Anagram Drive, Eden Prairie, MN 55344.
- Do NOT include bill payment in the return envelope.
- Ballots must be received by June 6, 2024.
- Please allow sufficient time for delivery.

Voting Online

- To access the login page of the official 2024 SCREMC Election, please type directvote.net/SCREMC into the address bar located at the top of your internet browser screen.
- Above and to the left is your Member Number and your Election Passcode. Use both of these numbers to log in.
- Once registered, follow the online voting instructions.
- Online voting begins on May 6, 2024 and ends at 11:59 pm ET, June 6, 2024.
- Do not mail your ballot if you plan to vote online.

Voting by SmartHub

- App: Open your SmartHub app, login and click the Vote Now button.
- Online: Login to your SmartHub online account and click the Vote Now button.
- Online voting begins on May 6, 2024 and ends at 11:59 pm ET, June 6, 2024.
- Do not mail your ballot if you plan to vote online.

If you have any problems voting online, please email support@directvote.net or call 952-974-2339.

PLEASE DETACH BEFORE RETURNING BALLOT

2024 STEUBEN COUNTY REMC BOARD OF DIRECTORS ELECTION

MARKING INSTRUCTIONS

- Use only black or blue ink.
- Fill in the box completely.

PROPER MARKING EXAMPLE

01

District 4
(Jackson Township, Steuben County)

Vote for one (1) Candidate:

Mike Kurtz (Incumbent)

Ken Wilson

Abstain

District 5
(Pleasant Township, Steuben County)

Vote for one (1) Candidate:

Carter Snider (Incumbent)

Abstain

District 8
(Steuben Township, Steuben County; Smithfield & Grant Township, Dekalb County)


Vote for one (1) Candidate:

Larry Jack (Incumbent)

Don Wittkamp

Abstain

01



Paper ballots must be received at Survey & Ballot Systems by June 6, 2024. All ballots received will be tabulated towards quorum.

2024

LEARN ABOUT YOUR DIRECTOR CANDIDATES ON PAGES 29-30.

MAY 2024 **16A**

SEE BEYOND THE AD

FIBER INTERNET

500/250 Mbps

\$24.99¹

Discounted monthly price with auto pay for 12 months.

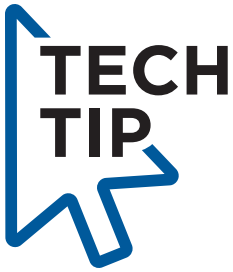
~~\$59.99~~

- ✓ Use multiple devices at the same time
- ✓ Watch your favorite shows in high definition

SIGN UP NOW

Available areas limited.

Terms apply. \$100 prorated ETF applies is canceled months 1-12. Offer time and quantity limited.



Many internet providers try to use gimmicks to entice people to switch to their service. Do you know what to look for and where to find them? Steuben County REMC wants to make sure our members understand the difference in for-profit advertising and how tech terminology can be used to trick people.

[See below for some of the gimmicks.](#)

"FIBER"

Many "Fiber" internet providers are not offering fiber to the home service. The fiber lines will stop at the road outside of your home. The fiber service will then be spliced to an existing coax or copper phone line. Your internet service will only be as fast as the slowest equipment.

"500/250 MBPS"

Many internet providers do not provide symmetrical upload and download speeds making conference calls, gaming, and many other online activities challenging. For some providers, it is not truly an unlimited data plan, as they will throttle speeds when data limits are reached.

"DISCOUNTED MONTHLY PRICE WITH AUTO PAY"

Terms and conditions may specify additional fees related to auto pay, equipment rentals, and installation fees.

"\$24.99 → ~~\$59.99~~"

Watch out for the promotional pricing hook. It may include large price jumps, hidden fees, and contracts after a short period of time, 3-6 months or up to 1 year.

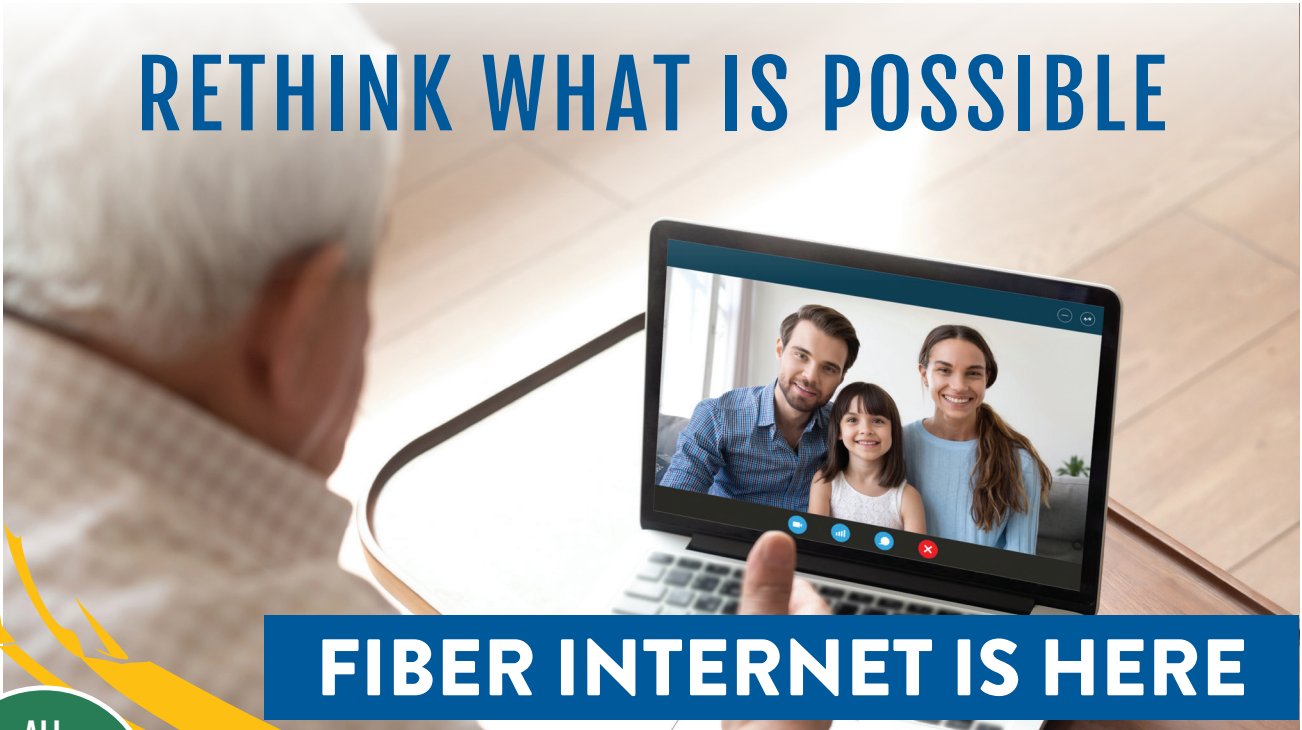
"AVAILABLE AREAS LIMITED"

Limited availability in areas because of the infrastructure costs they are targeting the densely populated areas that may already have other internet providers in the area. Our membership has full access to a completed total fiber network.

"TERMS APPLY..."

Fees may be specified in the terms and conditions on early termination which can include reimbursement for installation costs and equipment. An implied multi-year contract based on promotional pricing.

RETHINK WHAT IS POSSIBLE



FIBER INTERNET IS HERE

THOUSANDS CONNECTED - YOU NEXT?

ALL
WITHIN
YOUR
REACH

**EASY, CONVENIENT
WAYS TO ORDER**

**ON OUR
WEBSITE**

remcsteuben.com

Check availability



SMARTHUB

Download VIA
Google Play Store or
Apple App Store

**BROADBAND
SUPPORT**

Mon-Fri 8 a.m.-9 p.m.,
Sat 8 a.m.-2 p.m.

260-665-3563

SIMPLE AND TRANSPARENT

SILVER 100

100MBS — \$64.95/MO

Great for completing
homework and e-learning
Security monitoring/cameras

GOLD 500

500MBS — \$79.95/MO

Ideal for streaming
multiple movies and gaming
Perfect for working
from home

PLATINUM 1G

1000MBS — \$99.95/MO

Optimum speed
Maximum bandwidth
for connected homes

***SEASONAL OPTIONS**

OPERATION ROUND UP: 14 local organizations receive \$68,000 from Steuben County REMC members

Operation Round Up, a charitable giving program initiated by Steuben County REMC, empowers our members to positively impact our local community. Through this program, members have the opportunity to automatically round up their monthly electric bills to the nearest dollar. These small contributions are then pooled into a fund supporting various charitable causes in our area.

HOW IT WORKS

- **Rounding up:** Participating members' electric bills are rounded up to the next highest dollar. The average estimated annual donation is approximately 50 cents per month or \$6 annually, with a maximum of \$11.88.
- **Distribution:** The additional change collected from thousands of participating members adds up significantly. Steuben County REMC disburses these funds quarterly through a volunteer board of directors.
- **Local impact:** The Operation Round Up program has been making a difference since its launch in June 2004. To date, it has donated over \$790,000 to more than 560 projects within our local community.

RECENT CONTRIBUTIONS

- **\$68,000 to 14 local charities and community projects:** Steuben County REMC members recently donated a substantial amount to support various initiatives in our area. These contributions directly benefit local organizations and enhance the well-being of our community.
- **80% participation:** Approximately 80% of our members participate in the program by rounding up their electric bills. These seemingly small donations collectively create a significant impact in Steuben County.

WHO BENEFITS?

- **Non-profit organizations:** Operation Round Up's funds primarily support local non-profit organizations. These groups contribute to economic development or enhance the quality of life for our membership.
- The application deadlines are June 28, Sept. 27, and Dec. 27 — the last Friday of the month.
- **Apply:** Non-profit 501c(3) organizations can apply at steubenfoundation.org.

HOW CAN YOU GET INVOLVED?

- **Opt-in:** If you'd like to participate in the Operation Round Up program, simply call our office at 260-665-3563.
- **Learn more:** For additional information, visit our website at remcsteuben.com/operation-round-up.

ACKNOWLEDGMENTS

We extend our heartfelt gratitude to the 2023 Operation Round Up volunteer board for their dedication to our community:

- Craig Ralston (President)
- Cheryl Reed (Vice President)
- Nicole Lovett
- Deb Delancey (term limit)
- Gus Reed (term limit)
- Dale Chard (term limit)
- Two Steuben County REMC employees

Their commitment ensures that Operation Round Up continues to positively impact the lives of our members and the well-being of our local area.

We would like to thank you for your years of service on the Steuben County REMC Operation Round Up board.

ORGANIZATION, PROJECT

McMillen Health, 2023 preventive health education for Steuben County youth

Big Brothers Big Sisters of Northeast Indiana, Youth mentoring programs in Steuben County

Prairie Heights High School, E-sports and computer graphics lab

Community Harvest Food Bank of NE IN, Inc., Steuben County farm wagon

Hoosiers Feeding The Hungry, "Meat" the Need

Boomerang Backpacks, 2023-2024 school year

Land of Lakes Family Health Services, Medical referral and financial medical assistance program

Fremont Youth and Community Outreach Center, Equipment — capacity increase

Steuben County Cancer Association, Inc., Taking care of our neighbors

Steuben County Council on Aging, Improving overall health through communication and nutritional education

Junior Achievement of Northern Indiana, Junior Achievement K-5 in-school programming 2023-2024

Erin's House for Grieving Children, Inc., Erin's House grief support services for children and teens in Steuben County

Steuben Arts Scene, 2024 art events

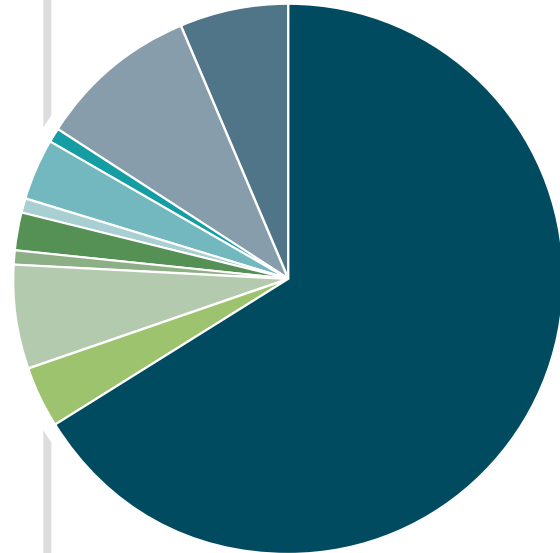
American Red Cross, Home fire relief program in Steuben County

Financial statements

STATEMENT OF REVENUE AND EXPENSES

	2023	2022
REVENUE		
Operating revenues	\$26,312,065	\$24,301,619
EXPENSES		
Cost of purchased power	\$17,421,940	\$16,368,556
Operating expenses	988,000	991,773
Maintenance expenses	1,602,028	1,417,867
Customer and sales expenses	809,046	669,399
Administrative and general expenses	2,481,092	2,274,195
Depreciation expense	1,658,950	1,326,239
Tax expense	184,819	287,859
Interest expense	910,424	539,035
Total expenses	\$26,056,299	\$23,874,923
Operating margins	\$255,766	\$426,696
NON-OPERATING MARGINS		
Interest on investments	22,261	22,969
Other non-operating margins	2,699	1,990
G&T and other patronage capital	900,102	394,190
Gain on disposition of general plant	—	300
Subsidiary income	76	2,571
Total margins	1,180,904	848,716
Members' patronage capital beginning of year	\$19,201,923	\$18,466,395
Current margins	1,180,904	848,716
Capital credits retired	(69,728)	(113,217)
Capital credit escheat	(63,713)	(73,883)
Transfer from other equities	63,781	73,912
Members' patronage capital end of year	\$20,313,167	\$19,201,923

WHERE YOUR DOLLAR GOES ...



- Power Cost \$0.662
- Operating \$0.038
- Maintenance \$0.061
- Taxes \$0.007
- Customer Service \$0.022
- Sales \$0.009
- Interest \$0.035
- Operating Margins \$0.010
- Administration and General \$0.094
- Depreciation \$0.062

the
COOPERATIVE PRINCIPLES

1
VOLUNTARY & OPEN MEMBERSHIP

DEMOCRATIC MEMBER CONTROL

2



MEMBERS' ECONOMIC PARTICIPATION

3



BALANCE SHEET

Assets

	Dec. 31, 2022	Dec. 31, 2021
UTILITY PLANT		
Electric plant in service	\$42,349,388	\$38,378,460
Broadband plant in service	\$16,945,286	\$5,720,203
Construction work in progress	16,215,503	7,561,668
Total	\$75,510,177	\$51,660,331
Less accumulated provision for depreciation	17,097,130	16,779,884
Net utility plant	\$58,413,047	\$34,880,447
OTHER ASSETS AND INVESTMENTS		
Investments in associated organizations	\$9,048,732	\$8,262,211
CURRENT ASSETS		
Cash and cash equivalents	\$928,921	\$2,171,586
Accounts receivable (less allowance for doubtful accounts of \$35,574 in 2021 and \$58,828 in 2020)	1,895,712	1,468,359
Accrued revenue	835,849	955,679
Materials and supplies	976,946	962,110
Other current assets	227,273	252,560
Total current assets	\$4,864,701	\$5,810,294
DEFERRED CHARGES		
	—	82,324
TOTAL ASSETS	\$72,326,480	\$49,035,276

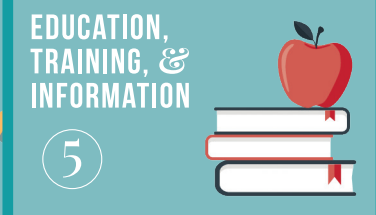
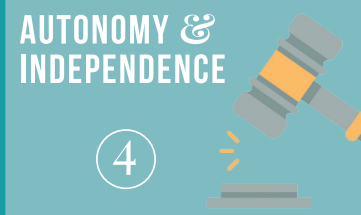
Equities and Liabilities

	Dec. 31, 2022	Dec. 31, 2021
EQUITIES		
Memberships	\$221,770	\$219,985
Patronage capital	20,313,167	19,201,923
Other equities	2,244,454	2,129,139
Total equities	\$22,779,391	\$21,551,047
NONCURRENT LIABILITIES		
CFC mortgage notes	\$44,049,509	\$23,080,957
Post-retirement benefit obligation	251,160	231,270
Total noncurrent liabilities	\$44,300,669	\$23,312,227
CURRENT LIABILITIES		
Accounts payable		
Purchased power	1,430,915	1,483,864
Other	1,252,553	1,243,646
Customer deposits	442,632	488,077
Accrued taxes	270,040	252,330
Other current and accrued liabilities	993,639	704,085
Total current liabilities	5,246,420	\$4,172,002
TOTAL EQUITIES AND LIABILITIES	\$72,326,480	\$49,035,276

SUMMARY OF LONG-TERM DEBT

CFC MORTGAGE NOTES:	2023	2022
2.65% - 2.90%	—	28,239
3.30% - 3.85%	4,105,656	4,261,156
3.95% - 4.95%	6,197,148	6,392,060
5.00% - 5.95%	13,698,923	7,899,502
6.00% - 6.95%	20,904,423	4,500,000
TOTAL LONG TERM DEBT	44,906,150	23,080,957

Visit our website,
remcsteuben.com,
 for the 2023 Annual
 Meeting minutes.



Steuben County REMC news

EMPLOYEES

NAME	JOB TITLE	YEARS OF SERVICE (AS OF DEC. 31, 2023)
Saydie B.	Member Services Rep	2
Brandi B.	Member Services Representative; Accounts Payable	3
Trisha B.	Member Services Representative; Broadband	2
Ann C.	Meter Technician	30
Jennifer D.	Senior Billing Supervisor	10
Joshua D.	Director of Member Services	12
Dustin E.	Director of Operations/Engineering	3
Christopher H.	Journeyman Lineman/Line Foreman	25
Brittney H.	Communication Coordinator	6
Keith H.	Broadband Technician	2
Dennis J.	Journeyman Lineman/Lead Lineman	29
Kevin K.	CEO	26
Gaven K.	Apprentice Journeyman Lineman	7
Matt L.	Journeyman Lineman/Staking	30
Bayley M.	Member Services Representative; Broadband	1
Namon M.	Journeyman Lineman	8
Aaron M.	Journeyman Lineman	11
Greg M.	Journeyman Lineman	28
Braden N.	Journeyman Lineman	12
Steve P.	Inventory Specialist	39
Jennifer P.	Member Services Representative; Collections	9
Gary R.	Journeyman Lineman	37
Luke S.	Right of Way, Tree Crew	1
Brett S.	Mechanic/Maintenance	13
Dave S.	Director of Broadband Operations	3
Steven S.	Director of Finance	13
Donald S.	Tree Crew Foreman	25
Sarah S.	Engineering Assistant/GIS Coordinator	7
Tyler S.	Right of Way, Tree Crew	2
Hunter S.	Apprentice Journeyman Lineman	4
Daylon U.	Journeyman Lineman	7
David V.	System Engineer	18
Beth W.	Executive Assistant	23
Russell W.	Broadband Provisioner	3

CURRENT BOARD OF DIRECTORS

Wayne Gingerich, *President*
DISTRICT 7 (Salem Township)

Larry Jack*, *Vice President*
DISTRICT 8 (Steuben, Smithfield and Grant Townships)

Gary Shough, *Secretary/Treasurer*
DISTRICT 1 (Greenfield and Millgrove Townships)

Scott Charters
DISTRICT 2 (Jamestown)

Bill Snyder
DISTRICT 3 (Fremont and Clear Lake Townships)

Mike Kurtz*
DISTRICT 4 (Jackson Township)

Carter Snider*
DISTRICT 5 (Pleasant Township)

Neasa Kalme
DISTRICT 6 (Scott and York Townships)

Marc Nelson
DISTRICT 9 (Otsego, Richland and Franklin Townships)

*UP FOR RE-ELECTION

CONSULTANTS

James A. McEntarfer
Corporate Counsel/Lawyer

Leonard J. Andorfer & Co., LLP
Certified Public Accountants/ Auditors

**THANK YOU FOR
SERVING STEUBEN
COUNTY REMC
MEMBERS!**

451

COMBINED YEARS
OF SERVICE

13.3

AVERAGE YEARS
OF SERVICE

104

COMBINED YEARS
OF INTERNET
EXPERIENCE

MEET YOUR

director candidates

Exercise one of the greatest benefits of being a member of an electric co-op by voting for the upcoming year's board of directors. Districts 4, 5, and 8 are up for election.

DISTRICT 4: JACKSON TOWNSHIP



Mike Kurtz, INCUMBENT

WHY ARE YOU RUNNING FOR OFFICE? "Serving on the Steuben County REMC board is an excellent way for me to give back to the community. Our REMC has certainly played an important part in bringing about positive changes in the quality of life for those living in northeast Indiana."

OCCUPATION: Grain farmer; school bus driver, Prairie Heights School

SPECIAL RECOGNITION: NRECA Board Leadership, NRECA Credential Cooperative Director

COMMUNITY INVOLVEMENT: Sons of Legion, American Legion Orland Post 423, American Legion Riders Association, Jackson Township Board

FAMILY: Wife, Tina, eight children, and 11 grandchildren

INTERESTS: Enjoys spending time with his children and grandchildren



Ken Wilson

WHY ARE YOU RUNNING FOR OFFICE? "I like to serve others. As a dedicated construction professional who has lived and worked throughout northeast Indiana for over 40 years, I understand the importance of effective communication in turning visions into realities. My knowledge, leadership, and experience as a problem-solver help me find solutions that benefit all parties. I believe my skills will positively impact my community and Steuben County REMC."

OCCUPATION: President and CEO, JICI Construction Company (26 years)

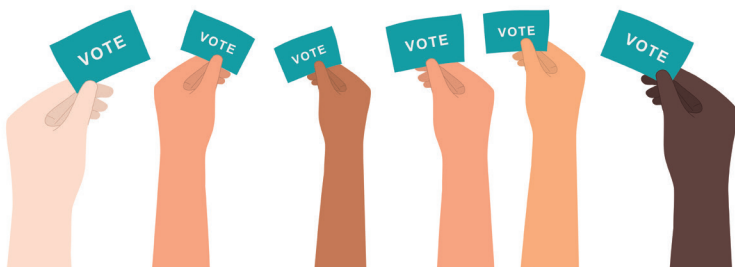
SPECIAL RECOGNITION: Secretary of Defense - Patriot Award, Developer of the Year (2018-19) Presented by Wingate by Wyndham, Commercial Builders Council Merit Award (Division- Institutional), 1st place recipient of the Glen A. Brackney High Strength Award presented by the Indiana Chapter of the American Concrete Institute

DEGREE/CERTIFICATION: AS Civil Engineering Technology (Purdue University), general contractors license (Multiple Locations), Indiana State Real Estate Broker's License, OSHA safety trained, first aid training (Red Cross), CPR training (Red Cross)

FAMILY: Wife, Patricia, three children, and 14 grandchildren

COMMUNITY INVOLVEMENT: Steuben County EDC (director), Builders Association Northeast Indiana (director, past president), Angola Chamber of Commerce (director)

INTERESTS: Enjoys spending time with his large, tight-knit family and being a racing enthusiast after retiring from racing late model series



DISTRICT 5: PLEASANT TOWNSHIP



Carter Snider, INCUMBENT

WHY ARE YOU RUNNING FOR OFFICE? “As an elected director, I’ve had an outstanding experience. This directorship post enables continuous schooling about electrification, broadband, and our co-op community locally, regionally, and nationally. Put all this together, and it makes for a wonderful experience.”

OCCUPATION: Adjunct professor, Trine University and Hillsdale College; previously managing partner at Lake Cities Broadcasting

COMMUNITY INVOLVEMENT: Angola Area Chamber of Commerce (past president), Steuben County YMCA (past president), 101 Lakes Kiwanis Club (past president), Charles McClure Reserve (past president), Steuben County Tourism Bureau (past president), Steuben County REMC Operation Round Up Board

SPECIAL RECOGNITION: NRECA Director Gold,

NRECA Board Leadership, NRECA Credential Cooperative Director, Ketner School of Business Chair’s Award, Trine University CCH Distinguish Faculty, Professor of the Year Trine University/KSB, Outstanding Alumnus of the WVU Department of Comm Studies, and Adjunct Professor of the Year at Tri-State University

FAMILY: Wife, Sandy, and two English Springer Spaniels

INTERESTS: Enjoys media consulting/research and working summers a Yogi Bear Jellystone Park- Fremont

DISTRICT 8: STEUBEN, SMITHFIELD, AND GRANT TOWNSHIP



Larry Jack, INCUMBENT

WHY ARE YOU RUNNING FOR OFFICE? “I have always been interested in Steuben County REMC and how it serves its members and our community.”

OCCUPATION: Owner of Larry’s Repair Service (retired after 36 years)

DEGREE/CERTIFICATION: Technical training from various companies

COMMUNITY INVOLVEMENT: Pleasant Lake Lions Club (past president), Indiana Electric Cooperative (past director), Wabash Valley Power Alliance (director)

SPECIAL RECOGNITION: NRECA Board Leadership, NRECA Credential Cooperative Director

FAMILY: Wife, Karen, and one son

INTERESTS: Enjoys antique tractors and farm equipment



Don Wittkamp

WHY ARE YOU RUNNING FOR OFFICE? “I want to use my experience and wisdom to assist the Steuben County REMC community and the other directors in the goals of financial, strategic planning, operating rates, and roles of service.”

OCCUPATION: HVACR Engineer (retired after 40 years)

DEGREE/CERTIFICATION: U.A.S.T.A.R. and Leadership in Energy and Environmental Design (LEED)

COMMUNITY INVOLVEMENT: U.S.G.B.C. Green Building Council, Refrigeration Service Engineers Society (R.S.E.S.), Community Emergency

Response Team (C.E.R.T.), and State & Federal Foster Parent Associations

SPECIAL RECOGNITION: U.A.S.T.A.R. HVAC Mastery

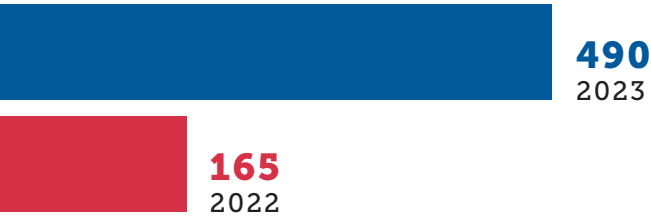
FAMILY: Wife, Christina, one son, and is a foster/ adopt parent

INTERESTS: Enjoys coaching Little League - Travel Baseball, chess, gardening, and camping

BY THE NUMBERS

BROADBAND

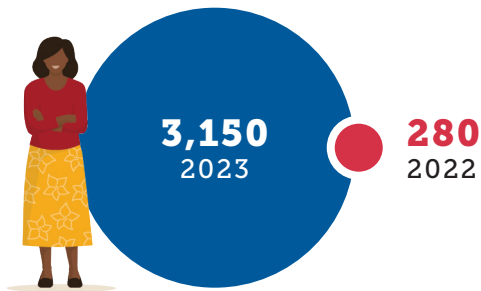
MILES ADDED



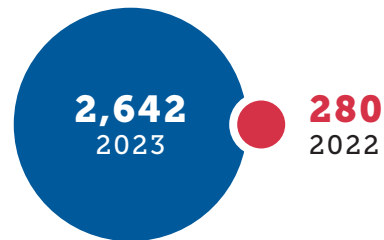
TOTAL NETWORK MILEAGE



TOTAL ACTIVE SUBSCRIBERS



NEW ACTIVE SUBSCRIBERS ADDED



TOTAL DATA USED TO DATE 6736.46 TB

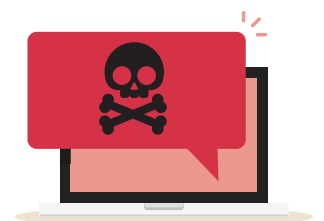
AVERAGE MONTHLY DATA USED 1122.74 TB



INTRUSIONS BLOCKED 42,276

MALWARE WEB THREATS BLOCKED 84,842

VIRUSES BLOCKED 25





**Subscribe to our YouTube channel
for first notice of election results.**

Steuben County REMC

A Touchstone Energy® Cooperative 

1212 S. WAYNE