

Agenda

Steuben County REMC

Regular Board of Directors Meeting

July 28, 2025

1. Call to Order
2. Roll Call
3. General Consent Items
 - a. Agenda
 - b. Minutes of June 30, 2025 Board Meeting
 - c. Bills
 - d. Director Expenses
 - e. New Hookups
 - f. New Memberships
 - g. IUPPS Update
4. Informative Reports
 - a. CEO Financial Report
 - b. Re-Comm Update
 - c. Operation Round Up
 - d. Safety Meeting
 - e. WVPA Board Meeting
 - f. Member Services Report
 - g. Cyber Security
 - h. Broadband Update
 - i. Committee Appointments for 2025-2026
 - j. KRTA
 - k.
5. Executive Session
 - a.
6. Decisions Needed
 - a. CFC Voting Delegate
7. Corporate Council Report
 - a.
8. Other Business
9. Calendar & Announcements
 - a. Next Regular Meeting August 25, 2025
10. Adjournment

Steuben County REMC

Monthly Operating Report

	Year to Date			Jun-25		This Month		
	Last year	This Year	Budget	Variance	Last Year	This Year	Budget	Variance
Operating Revenue	\$14,452,772	\$15,230,579	\$15,517,921	-\$287,342	\$2,554,077	\$2,503,814	\$2,683,098	-\$179,284
Kwh Sold	105,433,678	106,828,486	107,598,188	-769,702	17,991,648	17,101,018	18,882,132	-1,781,114
Cost of Purchased Power	\$8,945,597	\$8,700,076	\$8,837,352	-\$137,276	\$1,772,306	\$1,772,104	\$1,568,278	\$203,826
Kwh Purchased	110,350,420	111,331,081	110,279,113	1,051,968	20,047,109	20,179,837	20,598,373	-418,536
Distribution Expense - Operations	\$380,907	\$409,232	\$382,229	\$27,003	\$68,839	\$103,524	\$57,360	\$46,164
Distribution Expense - Maintenance	\$655,161	\$682,008	\$821,740	-\$139,732	\$122,211	\$107,516	\$143,019	-\$35,503
Consumer Accounts Expense	\$216,837	\$234,845	\$263,866	-\$29,021	\$33,212	\$38,655	\$44,163	-\$5,508
Consumer Services & Info Exp.	\$61,259	\$61,954	\$107,431	-\$45,477	\$22,632	\$27,862	\$41,425	-\$13,563
Sales Expense	\$50,202	\$55,952	\$54,749	\$1,203	\$8,168	\$7,895	\$7,603	\$292
Administrative & General Expense	\$1,565,261	\$1,481,418	\$1,692,368	-\$210,950	\$248,702	\$249,373	\$267,042	-\$17,669
Total Operation & Maintenance Exp.	\$11,875,225	\$11,625,484	\$12,159,735	-\$534,251	\$2,276,070	\$2,306,929	\$2,128,890	\$178,039
Depreciation & Amortization Exp.	\$1,217,007	\$1,458,779	\$1,460,887	-\$2,108	\$219,504	\$246,419	\$245,022	\$1,397
Tax Expense - Property	\$94,200	\$66,000	\$120,000	-\$54,000	\$15,700	\$11,000	\$20,000	-\$9,000
Tax Expense - Other	\$27	\$0	\$2,482	-\$2,482	\$0	\$0	\$0	\$0
Interest on Long Term Debt	\$889,304	\$1,138,886	\$1,138,887	-\$1	\$163,458	\$193,674	\$193,674	\$0
Interest Charged to Construction(credit)	\$0	\$0	\$0	\$0	\$0	\$0	\$0	\$0
Interest Expense Other	\$0	\$0	\$0	\$0	\$0	\$0	\$0	\$0
Other Deductions	\$0	\$0	\$0	\$0	\$0	\$0	\$0	\$0
Total Cost of Electric Service	\$14,075,762	\$14,289,149	\$14,881,991	-\$592,842	\$2,674,732	\$2,758,022	\$2,587,586	\$170,436
Patronage Capital & Operating Margins	\$377,010	\$941,430	\$635,930	\$305,500	-\$120,656	-\$254,208	\$95,512	-\$349,720
Non Operating Margins - Interest	\$10,913	\$10,849	\$11,100	-\$251	\$1,801	\$1,817	\$1,850	-\$33
Allowance for Funds Used During Const.	-\$350	\$0	\$0	\$0	\$0	\$0	\$0	\$0
Non Operating Margins - Other	\$1,250	\$2,491	\$0	\$2,491	\$231	\$224	\$0	\$224
Generation & Transmission Cap. Credits	\$0	\$0	\$0	\$0	\$0	\$0	\$0	\$0
Other Cap. Credits & Patronage Divid.	\$15,745	\$8,699	\$0	\$8,699	\$18,276	\$0	\$0	\$0
Extraordinary Items	\$0	\$0	\$0	\$0	\$0	\$0	\$0	\$0
Patronage Capital or Margins	\$404,568	\$963,469	\$647,030	\$316,439	-\$100,348	-\$252,167	\$97,362	-\$349,529

	Steuben County REMC			
	Monthly Operating Report			
	Jun-25		This Month	
	Last year	This Year	Budget	Variance
Operating Revenue	\$2,554,077	\$2,503,814	\$2,683,098	-\$179,284
Kwh Sold	17,991,648	17,101,018	18,882,132	-1,781,114
Cost of Purchased Power	\$1,772,306	\$1,772,104	\$1,568,278	\$203,826
Kwh Purchased	20,047,109	20,179,837	20,598,373	-418,536
Distribution Expense - Operations	\$68,839	\$103,524	\$57,360	\$46,164
Distribution Expense - Maintenance	\$122,211	\$107,516	\$143,019	-\$35,503
Consumer Accounts Expense	\$33,212	\$38,655	\$44,163	-\$5,508
Consumer Services & Info Exp.	\$22,632	\$27,862	\$41,425	-\$13,563
Sales Expense	\$8,168	\$7,895	\$7,603	\$292
Administrative & General Expense	\$248,702	\$249,373	\$267,042	-\$17,669
Total Operation & Maintenance Exp.	\$2,276,070	\$2,306,929	\$2,128,890	\$178,039
Depreciation & Amortization Exp.	\$219,504	\$246,419	\$245,022	\$1,397
Tax Expense - Property	\$15,700	\$11,000	\$20,000	-\$9,000
Tax Expense - Other	\$0	\$0	\$0	\$0
Interest on Long Term Debt	\$163,458	\$193,674	\$193,674	\$0
Interest Charged to Construction(credit)	\$0	\$0	\$0	\$0
Interest Expense Other	\$0	\$0	\$0	\$0
Other Deductions	\$0	\$0	\$0	\$0
Total Cost of Electric Service	\$2,674,732	\$2,758,022	\$2,587,586	\$170,436
Patronage Capital & Operating Margins	-\$120,656	-\$254,208	\$95,512	-\$349,720
Non Operating Margins - Interest	\$1,801	\$1,817	\$1,850	-\$33
Allowance for Funds Used During Const.	\$0	\$0	\$0	\$0
Non Operating Margins - Other	\$231	\$224	\$0	\$224
Generation & Transmission Cap. Credits	\$0	\$0	\$0	\$0
Other Cap. Credits & Patronage Divid.	\$18,276	\$0	\$0	\$0
Extraordinary Items	\$0	\$0	\$0	\$0
Patronage Capital or Margins	-\$100,348	-\$252,167	\$97,362	-\$349,529

Steuben County REMC

Monthly Operating Report

	Year to Date			Jun-25
	Last Year	This Year	Budget	Variance
Operating Revenue	\$14,452,772	\$15,230,579	\$15,517,921	-\$287,342
Kwh Sold	105,433,678	106,828,486	107,598,188	-769,702
Cost of Purchased Power	\$8,945,597	\$8,700,076	\$8,837,352	-\$137,276
Kwh Purchased	110,350,420	111,331,081	110,279,113	1,051,968
Distribution Expense - Operations	\$380,907	\$409,232	\$382,229	\$27,003
Distribution Expense - Maintenance	\$655,161	\$682,008	\$821,740	-\$139,732
Consumer Accounts Expense	\$216,837	\$234,845	\$263,866	-\$29,021
Consumer Services & Info Exp.	\$61,259	\$61,954	\$107,431	-\$45,477
Sales Expense	\$50,202	\$55,952	\$54,749	\$1,203
Administrative & General Expense	\$1,565,261	\$1,481,418	\$1,692,368	-\$210,950
Total Operation & Maintenance Exp.	\$11,875,225	\$11,625,484	\$12,159,735	-\$534,251
Depreciation & Amortization Exp.	\$1,217,007	\$1,458,779	\$1,460,887	-\$2,108
Tax Expense - Property	\$94,200	\$66,000	\$120,000	-\$54,000
Tax Expense - Other	\$27	\$0	\$2,482	-\$2,482
Interest on Long Term Debt	\$889,304	\$1,138,886	\$1,138,887	-\$1
Interest Charged to Construction(credit)	\$0	\$0	\$0	\$0
Interest Expense Other	\$0	\$0	\$0	\$0
Other Deductions	\$0	\$0	\$0	\$0
Total Cost of Electric Service	\$14,075,762	\$14,289,149	\$14,881,991	-\$592,842
Patronage Capital & Operating Margins	\$377,010	\$941,430	\$635,930	\$305,500
Non Operating Margins - Interest	\$10,913	\$10,849	\$11,100	-\$251
Allowance for Funds Used During Const.	-\$350	\$0	\$0	\$0
Non Operating Margins - Other	\$1,250	\$2,491	\$0	\$2,491
Generation & Transmission Cap. Credits	\$0	\$0	\$0	\$0
Other Cap. Credits & Patronage Divid.	\$15,745	\$8,699	\$0	\$8,699
Extraordinary Items	\$0	\$0	\$0	\$0
Patronage Capital or Margins	\$404,568	\$963,469	\$647,030	\$316,439

	Monthly Operating Report Fiber							
	Year to Date			Jun-25		This Month		
	Last Year	This Year	Budget	Variance	Last Year	This Year	Budget	Variance
Operating Revenue	\$1,844,686	\$2,234,126	\$2,320,747	-\$86,621	\$356,105	\$366,370	\$398,815	-\$32,445
					\$0	\$0	\$0	
Distribution Expense - Operations	\$44,059	\$27,205	\$27,348	-\$143	\$6,818	\$5,272	\$4,558	\$714
Distribution Expense - Maintenance	\$113,354	\$111,335	\$79,178	\$32,157	\$16,080	\$16,628	\$13,322	\$3,306
Consumer Accounts Expense	-\$2,193	-\$1,261	\$17,745	-\$19,006	-\$219	\$219	\$2,995	-\$2,776
Consumer Services & Info Exp.	\$0	\$0	\$0	\$0	\$0	\$0	\$0	\$0
Sales Expense	\$0	\$4,295	\$0	\$4,295	\$0	\$0	\$0	\$0
Administrative & General Expense	\$295,048	\$334,911	\$390,003	-\$55,092	\$63,933	\$61,244	\$69,165	-\$7,922
Total Operation & Maintenance Exp.	\$450,268	\$476,485	\$514,274	-\$37,789	\$86,612	\$83,363	\$90,040	-\$6,677
Depreciation & Amortization Exp.	\$591,471	\$779,830	\$784,688	-\$4,858	\$112,466	\$131,358	\$131,161	\$197
Tax Expense - Property	\$39,000	\$0	\$60,000	-\$60,000	\$6,500	\$0	\$10,000	-\$10,000
Tax Expense - Other	\$0	\$0	\$0	\$0	\$0	\$0	\$0	\$0
Interest on Long Term Debt	\$619,304	\$862,886	\$862,887	-\$1	\$118,458	\$147,674	\$147,674	\$0
Interest Charged to Construction(credit)	\$0	\$0	\$0	\$0	\$0	\$0	\$0	\$0
Interest Expense Other	\$0	\$0	\$0	\$0	\$0	\$0	\$0	\$0
Other Deductions	\$0	\$0	\$0	\$0	\$0	\$0	\$0	\$0
Total Cost of Electric Service	\$1,700,043	\$2,119,202	\$2,221,849	-\$102,647	\$324,037	\$362,395	\$378,875	-\$16,480
Patronage Capital & Operating Margins	\$144,643	\$114,924	\$98,898	\$16,026	\$32,068	\$3,975	\$19,940	-\$15,965
Non Operating Margins - Interest	\$0	\$0	\$0	\$0	\$0	\$0	\$0	\$0
Allowance for Funds Used During Const.	\$0	\$0	\$0	\$0	\$0	\$0	\$0	\$0
Non Operating Margins - Other	\$0	\$0	\$0	\$0	\$0	\$0	\$0	\$0
Generation & Transmission Cap. Credits	\$0	\$0	\$0	\$0	\$0	\$0	\$0	\$0
Other Cap. Credits & Patronage Divid.	\$0	\$0	\$0	\$0	\$0	\$0	\$0	\$0
Extraordinary Items	\$0	\$0	\$0	\$0	\$0	\$0	\$0	\$0
Patronage Capital or Margins	\$144,643	\$114,924	\$98,898	\$16,026	\$32,068	\$3,975	\$19,940	-\$15,965

	Steuben County REMC			
	Monthly Operating Report			
	Jun-25		This Month	
	Last Year	This Year	Budget	Variance
Operating Revenue	\$356,105	\$366,370	\$398,815	-\$32,445
Distribution Expense - Operations	\$6,818	\$5,272	\$4,558	\$714
Distribution Expense - Maintenance	\$16,080	\$16,628	\$13,322	\$3,306
Consumer Accounts Expense	-\$219	\$219	\$2,995	-\$2,776
Consumer Services & Info Exp.	\$0	\$0	\$0	\$0
Sales Expense	\$0	\$0	\$0	\$0
Administrative & General Expense	\$63,933	\$61,244	\$69,165	-\$7,922
Total Operation & Maintenance Exp.	\$86,612	\$83,363	\$90,040	-\$6,677
Depreciation & Amortization Exp.	\$112,466	\$131,358	\$131,161	\$197
Tax Expense - Property	\$6,500	\$0	\$10,000	-\$10,000
Tax Expense - Other	\$0	\$0	\$0	\$0
Interest on Long Term Debt	\$118,458	\$147,674	\$147,674	\$0
Interest Charged to Construction(credit)	\$0	\$0	\$0	\$0
Interest Expense Other	\$0	\$0	\$0	\$0
Other Deductions	\$0	\$0	\$0	\$0
Total Cost of Electric Service	\$324,037	\$362,395	\$378,875	-\$16,480
Patronage Capital & Operating Margins	\$32,068	\$3,975	\$19,940	-\$15,965
Non Operating Margins - Interest	\$0	\$0	\$0	\$0
Allowance for Funds Used During Const.	\$0	\$0	\$0	\$0
Non Operating Margins - Other	\$0	\$0	\$0	\$0
Generation & Transmission Cap. Credits	\$0	\$0	\$0	\$0
Other Cap. Credits & Patronage Divid.	\$0	\$0	\$0	\$0
Extraordinary Items	\$0	\$0	\$0	\$0
Patronage Capital or Margins	\$32,068	\$3,975	\$19,940	-\$15,965

	Steuben County REMC			
	Monthly Operating Report			
	Year to Date			Jun-25
	Last Year	This Year	Budget	Variance
Operating Revenue	\$1,844,686	\$2,234,126	\$2,320,747	-\$86,621
Distribution Expense - Operations	\$44,059	\$27,205	\$27,348	-\$143
Distribution Expense - Maintenance	\$113,354	\$111,335	\$79,178	\$32,157
Consumer Accounts Expense	-\$2,193	-\$1,261	\$17,745	-\$19,006
Consumer Services & Info Exp.	\$0	\$0	\$0	\$0
Sales Expense	\$0	\$4,295	\$0	\$4,295
Administrative & General Expense	\$295,048	\$334,911	\$390,003	-\$55,092
Total Operation & Maintenance Exp.	\$450,268	\$476,485	\$514,274	-\$37,789
Depreciation & Amortization Exp.	\$591,471	\$779,830	\$784,688	-\$4,858
Tax Expense - Property	\$39,000	\$0	\$60,000	-\$60,000
Tax Expense - Other	\$0	\$0	\$0	\$0
Interest on Long Term Debt	\$619,304	\$862,886	\$862,887	-\$1
Interest Charged to Construction(credit)	\$0	\$0	\$0	\$0
Interest Expense Other	\$0	\$0	\$0	\$0
Other Deductions	\$0	\$0	\$0	\$0
Total Cost of Electric Service	\$1,700,043	\$2,119,202	\$2,221,849	-\$102,647
Patronage Capital & Operating Margins	\$144,643	\$114,924	\$98,898	\$16,026
Non Operating Margins - Interest	\$0	\$0	\$0	\$0
Allowance for Funds Used During Const.	\$0	\$0	\$0	\$0
Non Operating Margins - Other	\$0	\$0	\$0	\$0
Generation & Transmission Cap. Credits	\$0	\$0	\$0	\$0
Other Cap. Credits & Patronage Divid.	\$0	\$0	\$0	\$0
Extraordinary Items	\$0	\$0	\$0	\$0
Patronage Capital or Margins	\$144,643	\$114,924	\$98,898	\$16,026

June Cash Balance

Farmers State Bank	\$61,938.56
---------------------------	--------------------

Fifth Third Bank	
-------------------------	--

1st. Federal S&L	\$802,302.65
-----------------------------	---------------------

Green Data Deposit	\$270,000.00
---------------------------	---------------------

Capital Credits	
------------------------	--

\$121,576.18.08	
------------------------	--

Working Fund	\$600.00
---------------------	-----------------

Total	\$1,296,417.39
--------------	-----------------------

WVPA 2023 Cap Credit	\$3,717.96
-----------------------------	-------------------

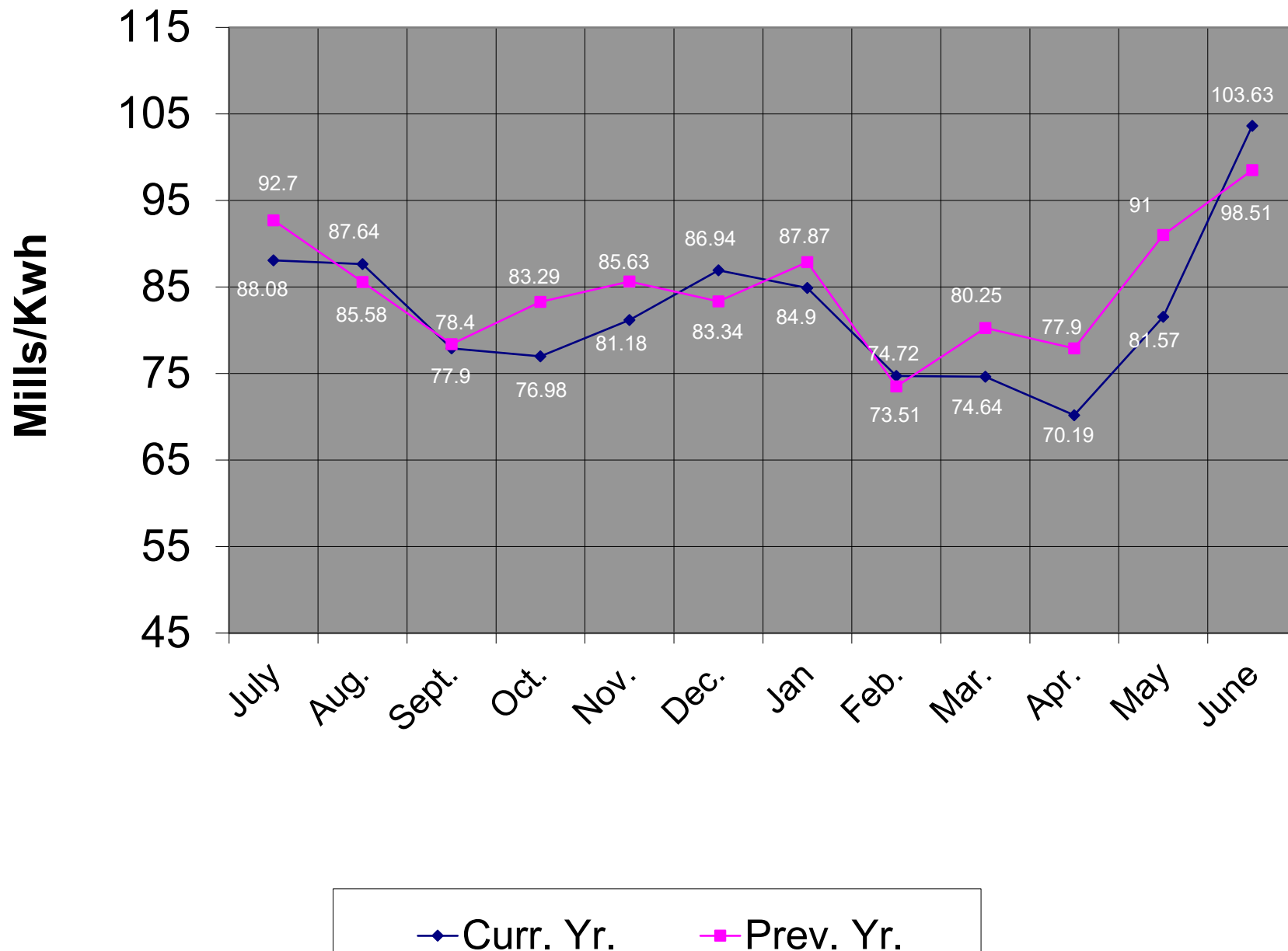
WVPA 2022 Cap Credit	\$14,229.08
-----------------------------	--------------------

WVPA 2021 Cap Credit	\$5,164.86
-----------------------------	-------------------

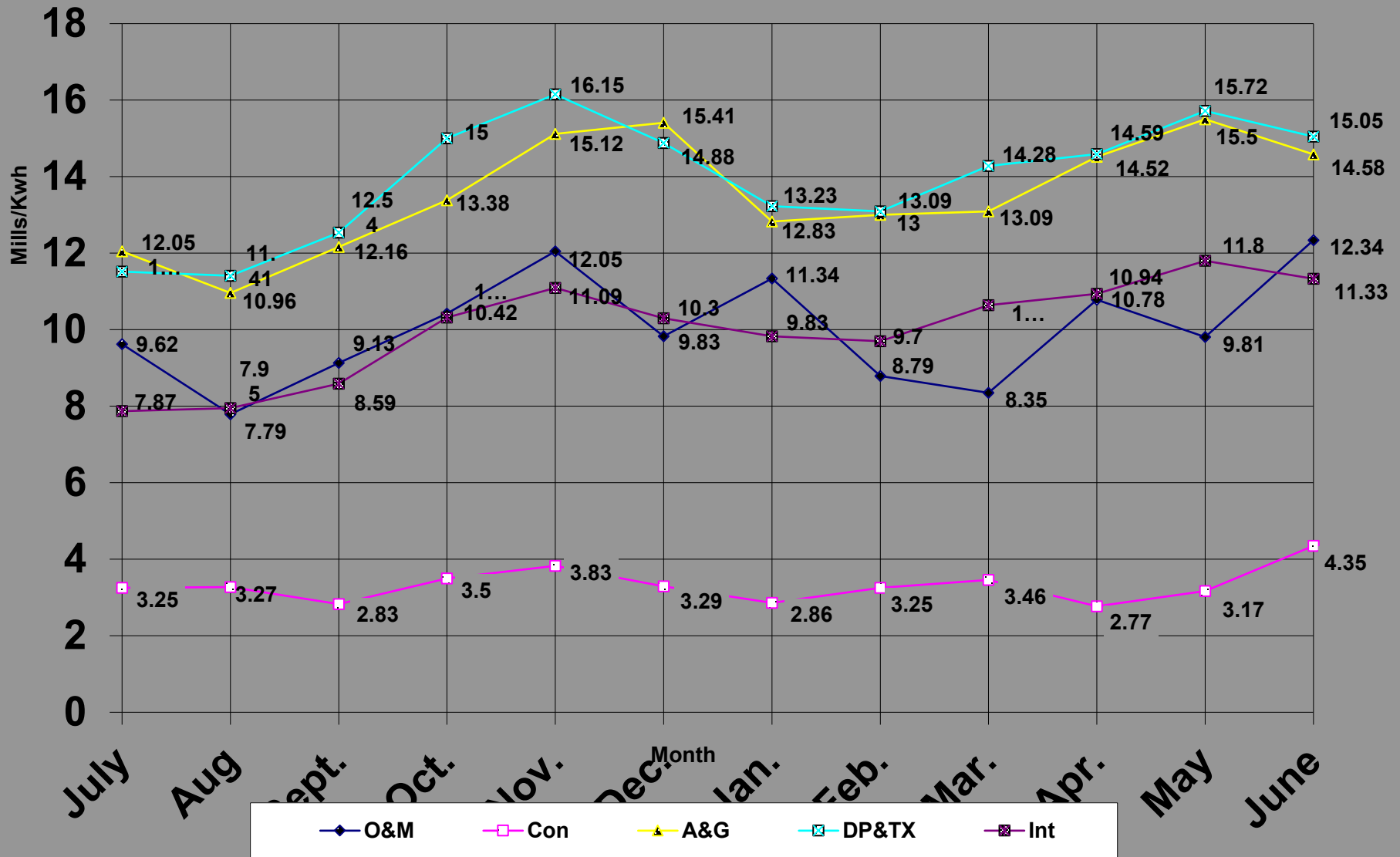
June 2025 Top 40

ACCOUNT	NAME	METER USAGE	CHARGE AMOUNT		
861003	PINE MANOR INC.	2,104,000	175,956.36		
238502	COLD HEADING CO	1,189,200	138,013.15		
906701	CARDINAL IG	1,119,600	126,130.05		
13713801	FAMILY DOLLAR	969,300	107,071.70		
13840801	BRIGHTMARK	620,300	69,206.38		
675801	NUCOR BUILDING SYSTEMS	423,600	47,260.66		
945001	719500 MEIJER, MAIL STOP #4	305,760	33,573.48		
641005	VENTRA ANGOLA, LLC	270,000	31,792.23		
13851400	TRUECORE LLC	280,200	30,741.89		
24201	SUN NG JELLY BARTON LAKE RV LL	203,700	26,147.42		
930100	VESTIL MANUFACTURING CORP	199,600	25,513.07		
1051700	MENARD INC	204,000	23,599.02		
709101	MSD OF STEUBEN COUNTY	122,400	17,035.87		
144404	THE GREEN DATA CENTRE LLC	344,000	16,905.21		
955101	DIVERSIFIED COATING	132,080	14,571.09		
1041901	TECHO-BLOC MIDWEST CORP	126,360	13,872.40		
1057401	STEUBEN LAKES REGIONAL	100,080	10,955.62		
943000	YMCA OF STEUBEN COUNTY INC	90,320	9,889.78		
340102	MANAPOGO RV CAMPGROUND	70,800	9,551.09		
907101	METAL SPINNERS	65,000	9,063.24		
975900	MSD OF STEUBEN COUNTY	58,960	7,437.63		
530301	PETROL STOPPING CTRS#45	61,120	6,858.47		
13751901	ANGOLA HOGBACK LAKE KOA	50,940	6,827.03		
1037601	FED EX FREIGHT EAST INC	57,600	6,461.75		
956205	HIGH POINT HEIFERS LLC	56,000	6,442.67		
13610000	API CONSTRUCTION CORP	39,000	6,269.53		
34301	ANGOLA HOGBACK LAKE KOA	42,480	5,908.62		
527800	TOWN OF FREMONT	55,840	5,906.94		
700802	CPG OHIO LLC	46,800	5,882.70		
100001	CON-WAY CENTRAL EXPRESS	45,400	5,278.19		
13900900	HAPPY ACRES LLC	38,400	5,238.53		
762102	HANSON AGGREGATES INC SITE 562	22,080	5,021.65		
13825301	WINGATE ANGOLA	41,400	4,615.17		
1038600	GLENDARIN HILLS GOLF CLUB	39,760	4,607.71		
13736300	E & B PAVING INC.	19,900	4,500.95		
712500	EMF CORPORATION	32,400	4,358.11		
1042001	OLD CASTLE LAWN & GARDEN	33,440	4,327.72		
1000202	RMH FRANCHISE	33,640	3,840.09		
63800	BUNCH SHOP RITE MARKET	33,520	3,617.59		
13618401	CLIFFORD AGGREGATE INC	18,800	3,352.44		
	June 2025 Totals	9,767,780	\$ 1,043,603.20		0.1068414
	May 2025 Totals	9,496,420	\$ 860,598.65		0.0906235

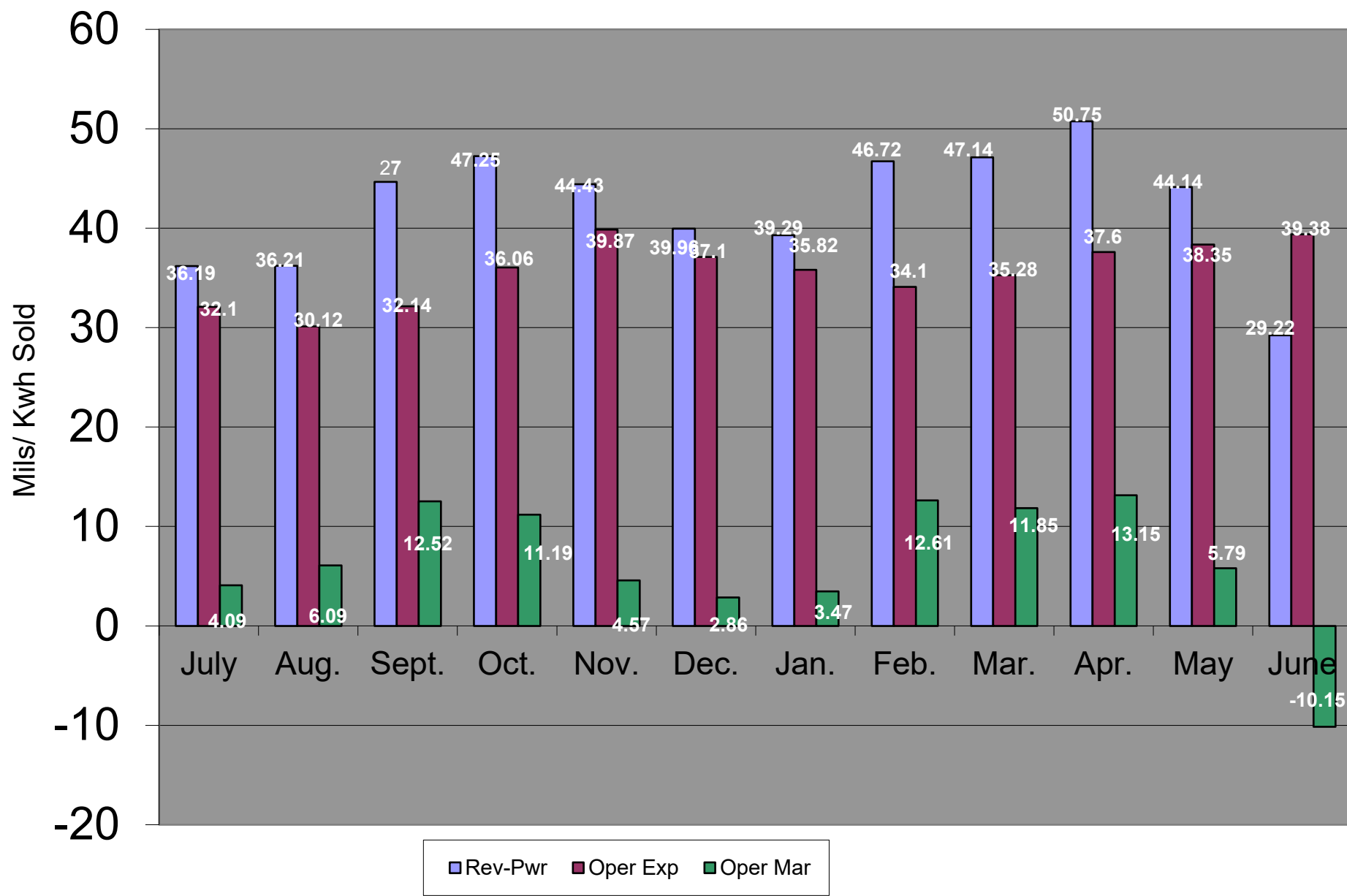
Power Cost in Mills / Kwh Sold



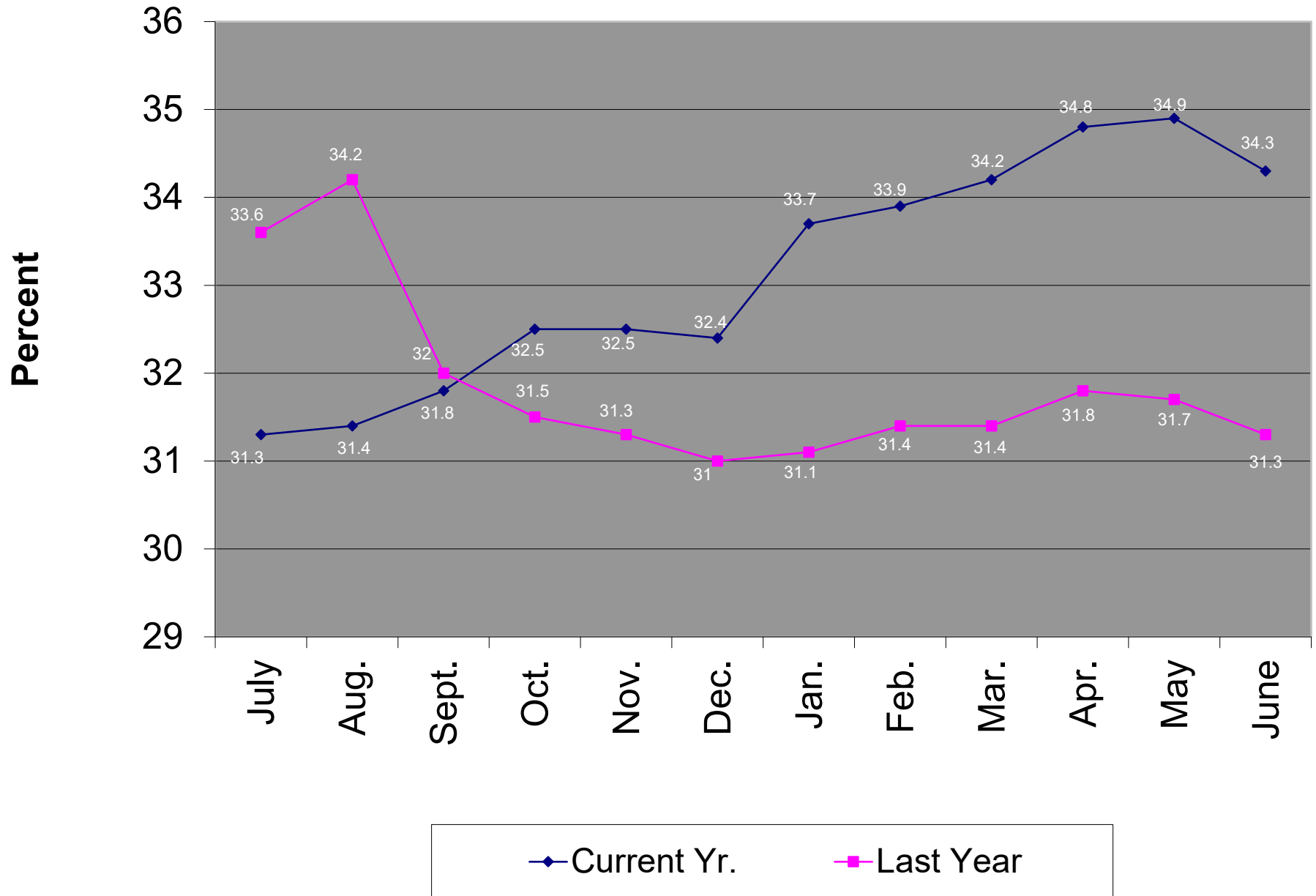
Oper. Exp. in Mills/KWH Sold



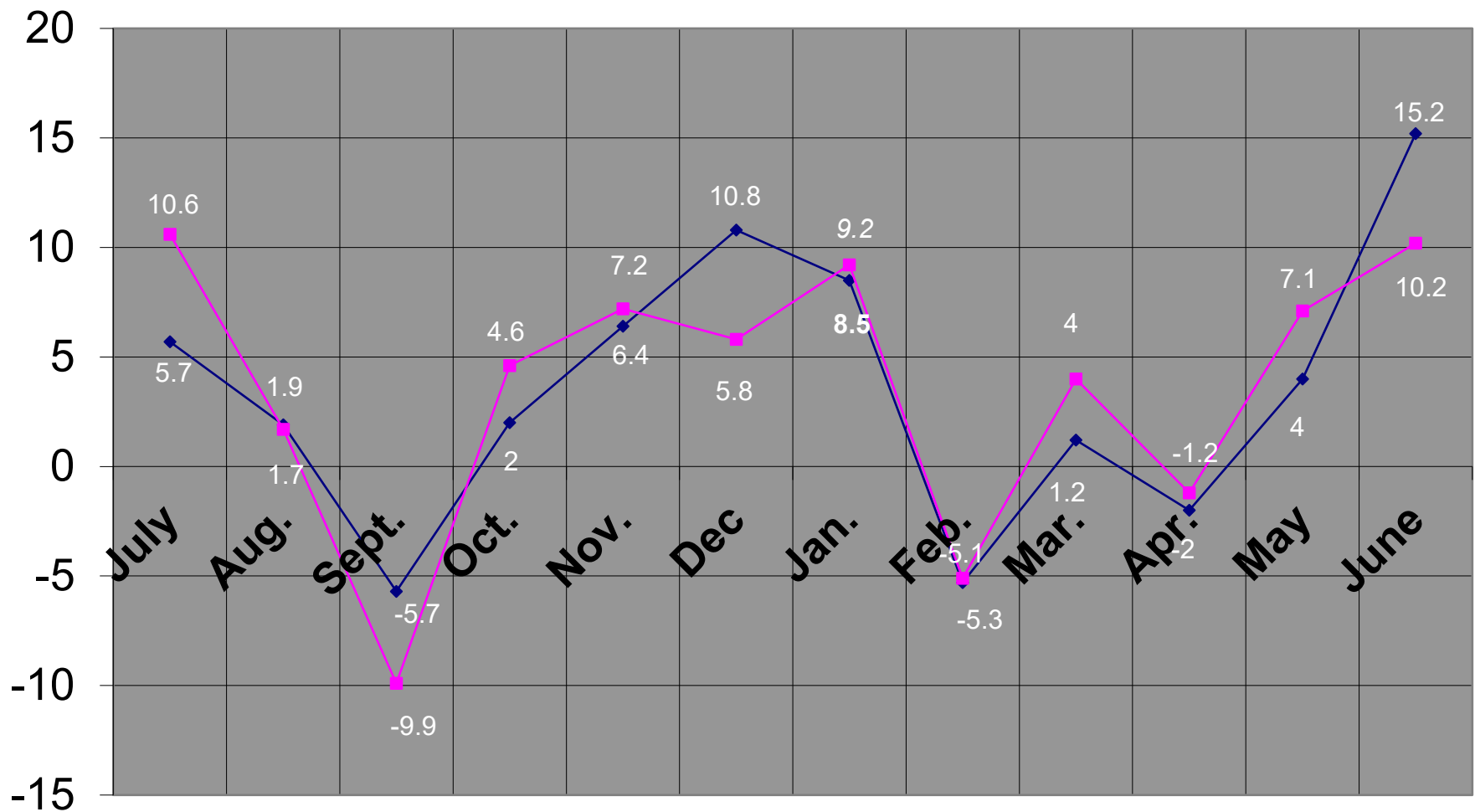
Gross Margin - Oper Exp = Oper Margin



Equity as a % of Total Assets



Percent Line Loss

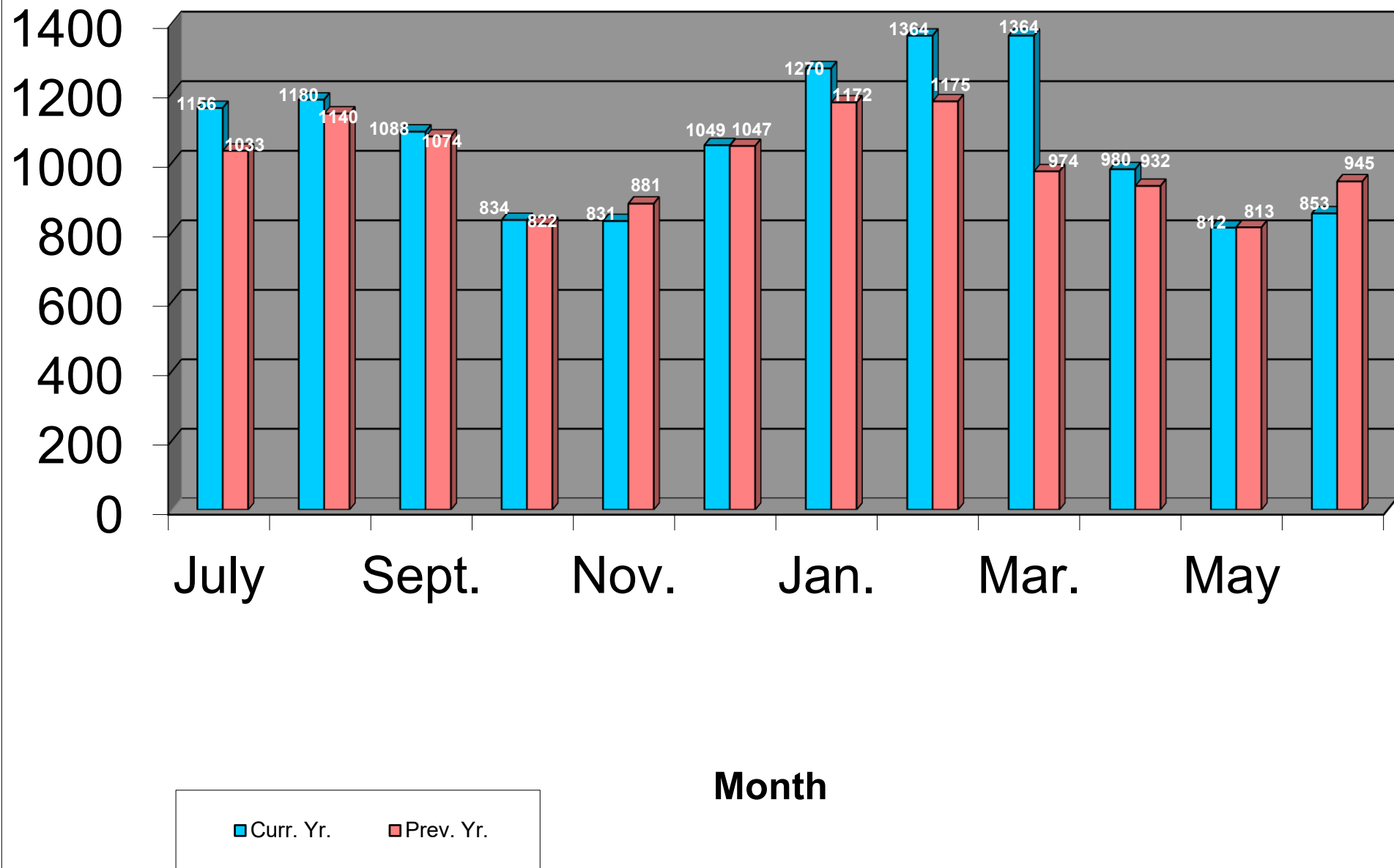


Period Ending

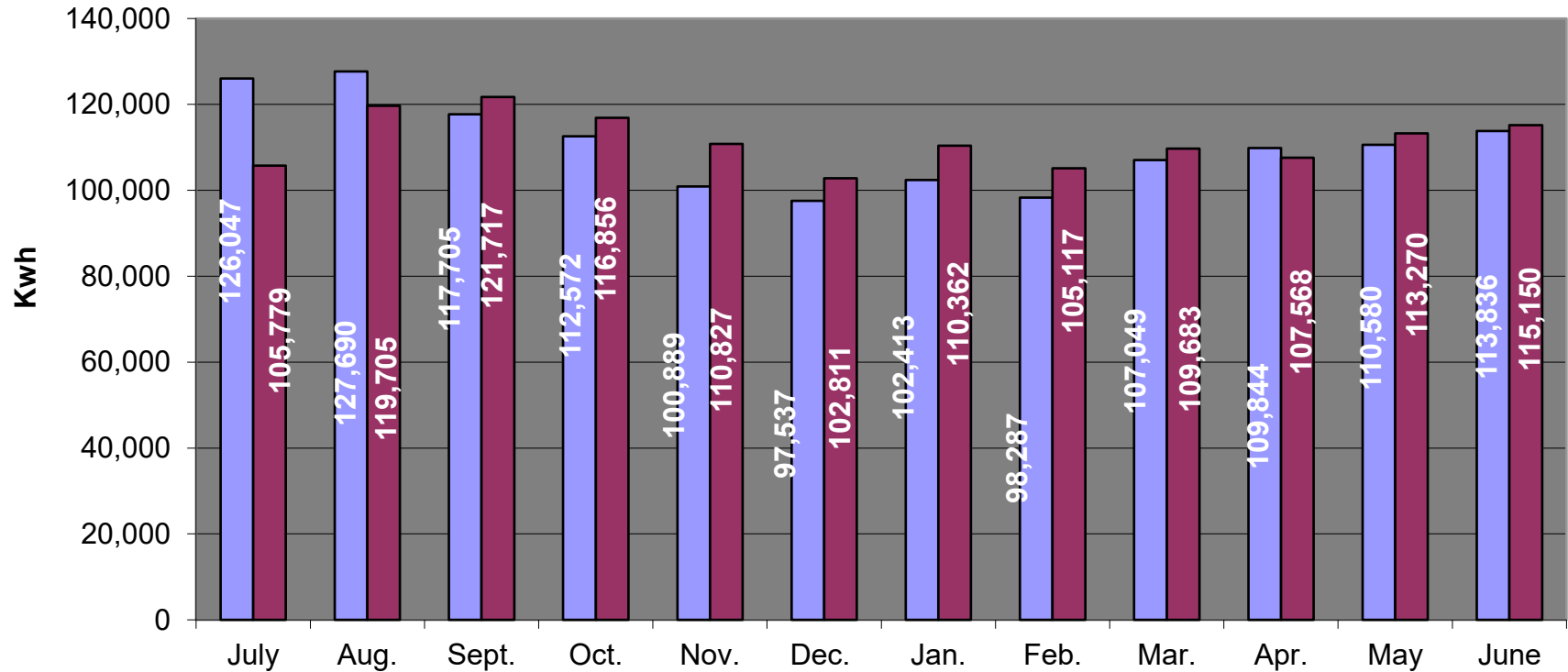
◆ Curr. Yr.

■ Prev. Yr.

Average Residential Kwh Consumption



C&I Average Consumption



■ Current Year ■ Last Year

STEUBEN CO REMC MONTHLY OUTAGE SUMMARY FOR: JUNE 2025

	POWER SUPPLIER	MAJOR STORM	SCHEDULED	ALL OTHER	TOTAL
<u>NO. OF OUTAGES</u> THIS MONTH	0	83	0	115	198
THIS MONTH LAST YEAR	0	0	6	269	275
THIS YEAR TO DATE	0	83	61	555	699
LAST YEAR TO DATE	0	0	8	712	720
<u>CONSUMER HR. PER</u> THIS MONTH	0	3408.22	0	808.23	4216.45
THIS MONTH LAST YEAR	0	0	635.78	103891.05	104526.8
THIS YEAR TO DATE	0	3408.22	754.05	16140.57	20302.84
LAST YEAR TO DATE	0	0	648.14	117383.03	118031.2
<u>AVG.HRS PER CON.</u> THIS MONTH	0	0.3175	0	0.07529	0.39281
THIS MONTH LAST YEAR	0	0	0.06007	9.8167	9.8768
THIS YEAR TO DATE	0	0.3179	0.0703	1.505	1.894
LAST YEAR TO DATE	0	0	0.0613	11.1074	11.16873

DATA FOR COMPUTING AVERAGE HOURS PER CONSUMER:

NUMBER OF CONSUMERS SERVED THIS MONTH: 10734

AVERAGE NUMBER OF CONSUMERS THIS YEAR TO DATE: 10718

NUMBER OF CONSUMERS THIS MONTH LAST YEAR: 10583

AVERAGE NUMBER OF CONSUMERS LAST YEAR TO DATE: 10568

Otter Substation

On May 22, 2025 Otter was taken offline due to gassing in the transformer.

It will take ~~four~~ ~~two~~ ? months to repair.

Wednesday, June 18, 2025 we experienced our first big outage effecting nearly 900 members. It took two hours to run and restore.

We also had a hard blink effecting the same accounts on Sunday, June 22nd.

We have made Pine Manor aware of the load shift and the fact we may encroach on their 8 meg for short periods of time. They understood and were ok with the arrangement.

Agenda

Steuben County REMC

Regular Board of Directors Meeting

July 28, 2025

1. Call to Order
2. Roll Call
3. General Consent Items
 - a. Agenda
 - b. Minutes of June 30, 2025 Board Meeting
 - c. Bills
 - d. Director Expenses
 - e. New Hookups
 - f. New Memberships
 - g. IUPPS Update
4. Informative Reports
 - a. CEO Financial Report
 - b. Re-Comm Update
 - c. Operation Round Up
 - d. Safety Meeting
 - e. WVPA Board Meeting
 - f. Member Services Report
 - g. Cyber Security
 - h. Broadband Update
 - i. Committee Appointments for 2025-2026
 - j. KRTA
 - k.
5. Executive Session
 - a.
6. Decisions Needed
 - a. CFC Voting Delegate
7. Corporate Council Report
 - a.
8. Other Business
9. Calendar & Announcements
 - a. Next Regular Meeting August 25, 2025
10. Adjournment



July 2025 Board Meeting

2004 Total			\$18,032.48		
2005 Total			\$41,792.07		
2006 Total			\$41,496.82		
2007 Total			\$41,034.09		
2008 Total			\$44,092.37		
2009 Total			\$44,920.33		
2010 Total			\$42,431.35		
2011 Total			\$41,919.61		
2012 Total			\$45,034.33		
2013 Total			\$42,477.23		
2014 Total			\$42,936.08		
2015 Total			\$43,682.99		
2016 Total			\$43,392.79		
2017 Total			\$44,027.97		
2018 Total			\$44,865.15		
2019 Total			\$45,389.98		
2020 Total			\$46,640.50		
2021 Total			\$48,570.78		
2022 Total			\$44,975.76		
2023 Total			\$41,850.76		
2024 Total			\$47,035.91		
2025					
Jan.			\$3,603.12		
Feb.			\$3,579.22		
Mar.			\$3,570.02		
Apr.			\$3,573.07		
May			\$3,585.32		
June			\$3,564.94		
July	Cycle 4		\$9.95		
	Cycle 1		\$1,026.25		
	Cycle 2		\$1,166.90		
	Cycle 3		\$0.00		
Adj.			\$0.00		
			\$2,203.10		
Total			\$920,278.14		
Membership Participation Level					
Total			10,132		
Participating Accounts			7,459		
Current Participation Rate			73.62%		
Last Months Rate			73.60%		

BOARD OF DIRECTORS MINUTES
STEUBEN COUNTY REMC OPERATION ROUND-UP TRUST

Steuben County REMC Office Angola, Indiana

Funding Year: 2025 Quarter: 1

April 9, 2025

Current Board: Craig Ralston (President), Cheryl Reed (Vice President), Steve Smith (Treasurer), Britt Holden (Secretary), Nicole Lovett, Sara Smith, Jessica Brodock

I. CALL TO ORDER:

The meeting was called to order at 9:01 a.m. by Vice President Cheryl Reed.

II. ROLL CALL:

Board of Directors: President Craig Ralston, Vice President Cheryl Reed, Treasurer Steve Smith, Secretary Britt Holden, Nicole Lovett and Jessica Brodock were present. Sandy Ferrell from the Steuben County Community Foundation (SCCF) was also in attendance. Absent: Sara Smith

III. APPROVAL OF PREVIOUS MINUTES:

The previous meeting minutes were approved and seconded by Reed and Steve Smith.

IV. FINANCIALS:

The treasurer's report was read by Steve Smith, indicating after paying out the previously approved grants, replenishing the \$2,500 fund held at the REMC for discretionary or emergency disbursements, and the member donations from April to June \$10,723.80, a total of \$11,320.30 is being held by the SCCF. The total projected awarded since 2006 is 570 and the total amount awarded since 2006 is \$861,080.65.

V. GRANT APPLICATIONS:

The board reviewed the following grant requests. There were six requests totaling \$33,070.10 that were submitted by the grant deadline of June 27. The following grant requests and amounts were then decided upon by the board as follows:

1) The Nature Conservancy (Requested \$10,000.00) Douglas Woods Nature Preserve: Creating a Nature- Based Destination in Northeast Indiana

\$1,000.00

This application's discussion centered around how it is a great thing; however, it is a big ask, especially with our limited funds at the moment. The board went through all the other applications to see what was available to grant. Ralston proposed \$1,000 and it was seconded by Brodock.

- 2) **Elijah Haven Crisis Intervention Center** (*Requested \$2,650.10*)

[Abuse Intervention Program](#)

FULL AMOUNT

The ORU Board likes this organization and thinks that this new project could be beneficial. There was some concern about whether this project would be used in Steuben and if there is representation on their board for Steuben. This was deemed that that it will be utilized in Steuben, and there is representation. Project amount approved by Reed and seconded by Brodock.
- 3) **Hendry Park Elementary PTO Inc.** (*Requested \$1,000.00*)

[Hendry Park PTO Field Trip Sponsorship Program - Helping Every Student Explore Beyond the Classroom](#)

FULL AMOUNT

This discussion was short due to the ORU board understanding the needs of the low-income students. This project will have a high impact with a low cost. The full amount was proposed by Reed and seconded by Brodock.
- 4) **Salem Center Volunteer Fire Department** (*Requested \$6,220.00*)

[Thermal Imager and water valve](#)

\$3,800.00

The Board was concerned about the lack of funding sources and the lack of a long-term funding plan. They felt that Volunteer Fire departments are a wonderful thing, but that many of them are hurting for funds. They would love to see collaboration between the departments about resources. The valves and thermal imaging are both needed, but the board thought the imaging equipment has a wider range of uses and the valves they do have on another truck at the moment.
- 5) **Haven Hills Therapy Center** (*Requested \$3,200.00*)

Haven Hills Therapy Center's Creation Cabin Interior

\$2,000.00

The Board discussed the community impact versus cost, the organization's history in Dekalb county, the lease that they are paying for the facilities per year, and how it looks like they have a land contract with the current owner. The organization is a great organization that has a high impact on those it touches. The board wanted to do more for them, but due to the limited funds, could not. Ralston proposed the amount of \$2,000.00, and Lovett seconded the motion.
- 6) **Turning Point of Steuben County, Inc.** (*Requested \$10,000.00*)

Transition to Success™

DENIED

The Board decided to deny this application due to a lack of community impact and now that they do not take in the homeless, they are not following their mission statement. Approved by Reed and seconded by Ralston.

Total Grant Requests Approved	
\$10,450.10	
Total Funds Available Ending Balance	\$ 870.20

No other entities were considered for grants at this time.
The Steuben County Community Foundation will prepare the approved funds for approval of the Steuben County Community Foundation board,

organizations informing them of the final decision including any conditions with the Grant Agreement form. The Foundation will disperse checks when the grant recipients return the Agreement. They will then need to fill out and submit the Final Project Report Form upon completion of their project.

NEW BUSINESS:

There was no new business.

FOLLOW-UP TASKS:

One of our board members asked about requesting the board to include the individual board members' locations.

ADJOURNMENT:

The application deadlines for the 2025 year are September 26 and December 26. The correlating tentative board meetings for 2025 are October 8, and January 14, 2026.

The next deadline for submitting applications will be October 8th for the third quarter of the 2025 funding cycle, which will also be publicized in the same outlets, as well as on the REMC website.

The next Board meeting will take place on Wednesday, October 8 at 9:00 AM at the REMC office. At the next meeting, the board will review the grant applications received prior to the September 26, 2025 deadline and decide upon quarterly disbursements.

With nothing further to discuss, the meeting was adjourned.

SUBMITTED BY:



Britt Holden
Steuben County REMC Operation Round Up- Secretary

Agenda

Steuben County REMC

Regular Board of Directors Meeting

July 28, 2025

1. Call to Order
2. Roll Call
3. General Consent Items
 - a. Agenda
 - b. Minutes of June 30, 2025 Board Meeting
 - c. Bills
 - d. Director Expenses
 - e. New Hookups
 - f. New Memberships
 - g. IUPPS Update
4. Informative Reports
 - a. CEO Financial Report
 - b. Re-Comm Update
 - c. Operation Round Up
 - d. Safety Meeting
 - e. WVPA Board Meeting
 - f. Member Services Report
 - g. Cyber Security
 - h. Broadband Update
 - i. Committee Appointments for 2025-2026
 - j. KRTA
 - k.
5. Executive Session
 - a.
6. Decisions Needed
 - a. CFC Voting Delegate
7. Corporate Council Report
 - a.
8. Other Business
9. Calendar & Announcements
 - a. Next Regular Meeting August 25, 2025
10. Adjournment

Safety Report
Steuben County REMC
Board of Directors
July 17, 2025

July 2, 2025- Chris Hamilton from IEC was here conducting full day crew visits for the July safety meeting.

There were no injuries or loss of time reported.

Agenda

Steuben County REMC

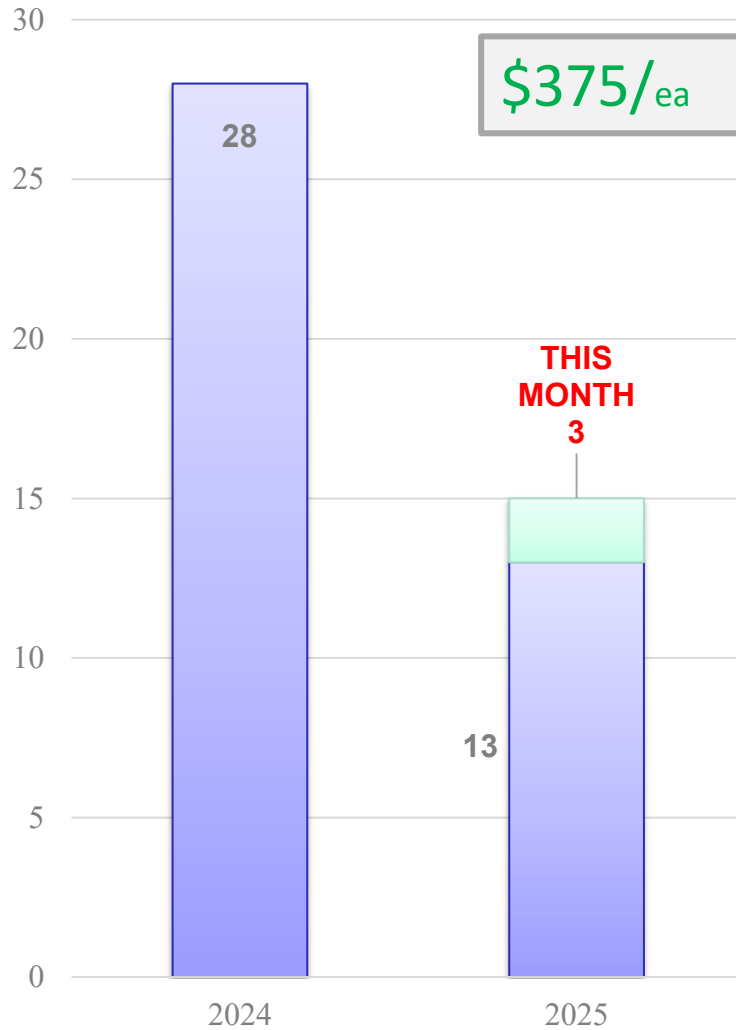
Regular Board of Directors Meeting

July 28, 2025

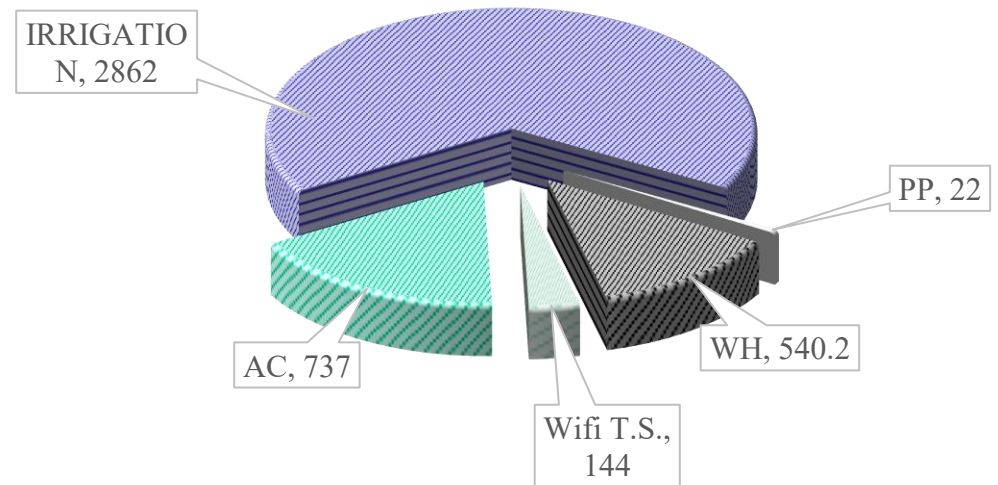
1. Call to Order
2. Roll Call
3. General Consent Items
 - a. Agenda
 - b. Minutes of June 30, 2025 Board Meeting
 - c. Bills
 - d. Director Expenses
 - e. New Hookups
 - f. New Memberships
 - g. IUPPS Update
4. Informative Reports
 - a. CEO Financial Report
 - b. Re-Comm Update
 - c. Operation Round Up
 - d. Safety Meeting
 - e. WVPA Board Meeting
 - f. Member Services Report
 - g. Cyber Security
 - h. Broadband Update
 - i. Committee Appointments for 2025-2026
 - j. KRTA
 - k.
5. Executive Session
 - a.
6. Decisions Needed
 - a. CFC Voting Delegate
7. Corporate Council Report
 - a.
8. Other Business
9. Calendar & Announcements
 - a. Next Regular Meeting August 25, 2025
10. Adjournment

MARKETING & MEMBER SERVICES

WATER HEATER SALES

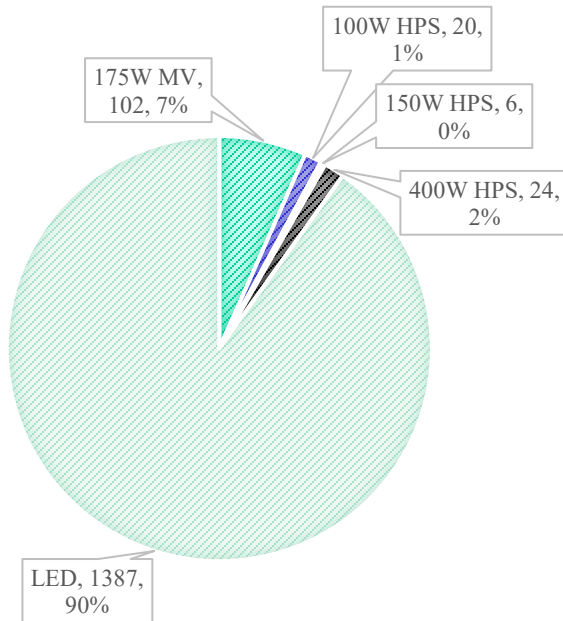


LOAD MANAGEMENT – KW 4197.2 KW



MARKETING & MEMBER SERVICES

SECURITY LIGHTS AS OF 1/2025



2025 SECURITY LIGHT INSTALLS/REMOV ALS

2- REMOVALS
(0) this month
2 - NEW
(0) this month
8 - SWAP/ MAINT.
(1) this month



9 Members

122 Units
(NO CHANGE)



EV CHARGER STATISTICS
3438 VEHICLES CHARGED
13,969 kWh's CONSUMED
7.5 HRS - AVG SESSION

9 VEHICLES CHARGED
192 kWh's CONSUMED

MARKETING & MEMBER SERVICES

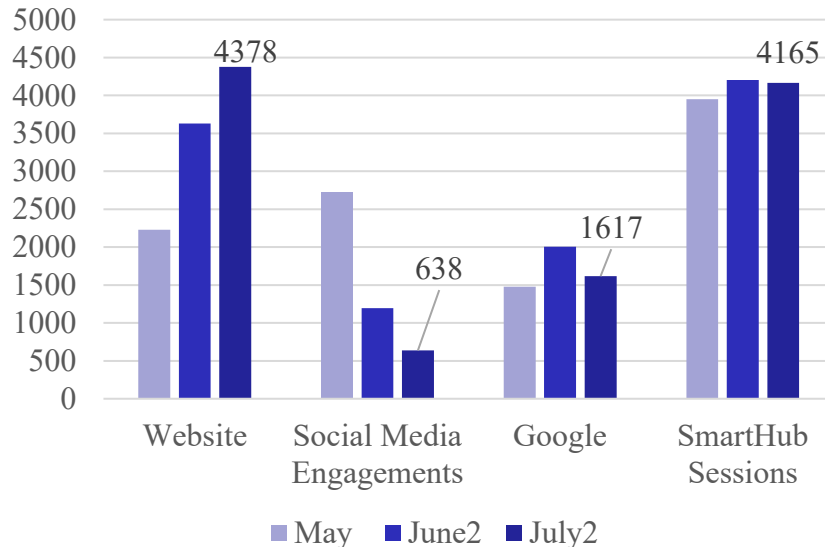
INCLUDES PMT,
VIEW BILL, VIEW
USAGE, ECT...

9440 Subscribers



Website Activity:

Member Engagement

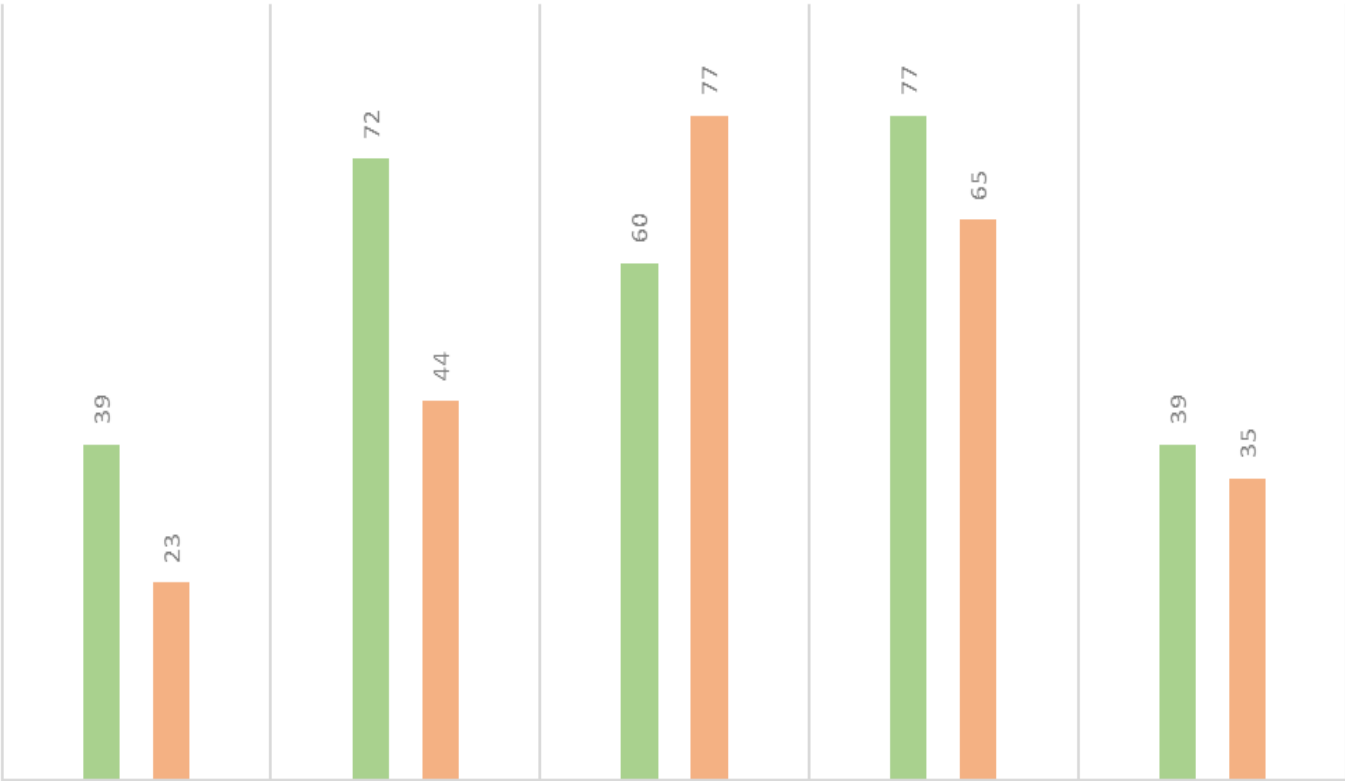


Total		4,378 100% of total
1	Home Steuben County REMC	1,922 (43.9%)
2	Storm/ Outage Center Steuben County REMC	620 (14.16%)
3	Packages/ Pricing Steuben County REMC	324 (7.4%)
4	SmartHub Steuben County REMC	210 (4.8%)
5	Contact Us Steuben County REMC	198 (4.52%)
6	Check Availability Steuben County REMC	196 (4.48%)
7	How to make a payment Steuben County REMC	138 (3.15%)
8	Rebate Programs Steuben County REMC	82 (1.87%)
9	Resource Not Found Steuben County REMC	68 (1.55%)
10	Reporting an Outage Steuben County REMC	62 (1.42%)

BROADBAND TAKE RATE PER ZONE

NEW ORDERS/INSTALLS

■ New Orders ■ Installs



■ New Orders

39

72

60

77

39

■ Installs

23

44

77

65

35

BROADBAND TAKE RATE PER ZONE

7.17.2025								
	Zone	Marketing Zone	Active	Pending	7.17	NEW	Total Members	% Take
PHASE 1	1	OTTER NORTHWEST	89	0	89	0	118	75%
	2	OTTER NORTHEAST	370	6	376	7	632	59%
	3	OTTER SOUTH	702	3	705	2	973	72%
	4	ORLAND MP	201	5	206	9	361	57%
	5	HELMER MP	139	2	141	2	197	72%
PHASE 2	6	NEVADA NORTH	213	7	220	9	382	58%
	7	NEVADA NORTHEAST	352	12	364	9	874	42%
	8	NEVADA WEST	413	7	420	11	1110	38%
	9	NEVADA EAST	240	4	244	3	519	47%
PHASE 3	10	SCOTT NORTHWEST	321	6	327	9	549	60%
	11	SCOTT WEST, NORTHEAST, SOUTH	76	2	78	3	166	47%
	12	RUHL	214	3	217	2	404	54%
	13	ANGOLA N&W	248	5	253	6	427	59%
	14	SCOTT EAST	416	3	419	4	738	57%
PHASE 4	15	ANGOLA SOUTH	218	7	225	9	374	60%
	16	STEUBENVILLE	188	1	189	4	423	45%
	17	WATERLOO	60	1	61	3	177	34%
P2P			220	3	223	2		
Total			4680	77	4757	94	8424	56%

OTHER UPDATES

SOLAR

- GIBSONS PLUMBING & HEATING
 - 125 KW AC
 - CONSTRUCTION STARTED WEEK OF 5/19; TENTATIVE COMPLETION FIRST OF JUNE
 - **COMPLETED 7.16**
- FREMONT COMMUNITY CHURCH (COMMERCIAL/ UNDER 25KW)
 - 10KW AC TENTATIVE
 - INQUIRY RECEIVED FROM CONTRACTOR
 - **COMPLETED 7.17**
- COREY SHAFFER – 1495 S 750 W (RESIDENTIAL)
 - 10.7KW AC
 - **INTERCONNECTION SIGNED/ WAITING ON PMT**

Agenda

Steuben County REMC

Regular Board of Directors Meeting

July 28, 2025

1. Call to Order
2. Roll Call
3. General Consent Items
 - a. Agenda
 - b. Minutes of June 30, 2025 Board Meeting
 - c. Bills
 - d. Director Expenses
 - e. New Hookups
 - f. New Memberships
 - g. IUPPS Update
4. Informative Reports
 - a. CEO Financial Report
 - b. Re-Comm Update
 - c. Operation Round Up
 - d. Safety Meeting
 - e. WVPA Board Meeting
 - f. Member Services Report
 - g. Cyber Security
 - h. Broadband Update
 - i. Committee Appointments for 2025-2026
 - j. KRTA
 - k.
5. Executive Session
 - a.
6. Decisions Needed
 - a. CFC Voting Delegate
7. Corporate Council Report
 - a.
8. Other Business
9. Calendar & Announcements
 - a. Next Regular Meeting August 25, 2025
10. Adjournment

Cyber Security

Other than the usual updates for NISC, SCADA and Tantalus there is nothing new to report in the area of cyber security.

Agenda

Steuben County REMC

Regular Board of Directors Meeting

July 28, 2025

1. Call to Order
2. Roll Call
3. General Consent Items
 - a. Agenda
 - b. Minutes of June 30, 2025 Board Meeting
 - c. Bills
 - d. Director Expenses
 - e. New Hookups
 - f. New Memberships
 - g. IUPPS Update
4. Informative Reports
 - a. CEO Financial Report
 - b. Re-Comm Update
 - c. Operation Round Up
 - d. Safety Meeting
 - e. WVPA Board Meeting
 - f. Member Services Report
 - g. Cyber Security
 - h. Broadband Update
 - i. Committee Appointments for 2025-2026
 - j. KRTA
 - k.
5. Executive Session
 - a.
6. Decisions Needed
 - a. CFC Voting Delegate
7. Corporate Council Report
 - a.
8. Other Business
9. Calendar & Announcements
 - a. Next Regular Meeting August 25, 2025
10. Adjournment



BROADBAND UPDATE

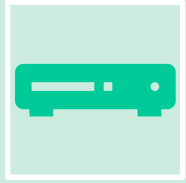


JULY 2025

SERVICE INSTALLATION REPORT

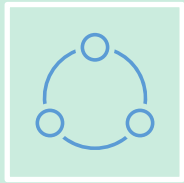
		PTP COUNT	258
		HISTORICAL AVERAGE	15.48
AVERAGE NEW ORDERS /WEEK (LAST TWO MONTHS)			17
		TODAY	7/22/2025
		DAYS LEFT IN THE YEAR	162
		WEEKS LEFT IN THE YEAR	23
		PROJECTED NEW ORDERS	391
	TOTAL PROJECTED ACTIVE MEMBERS		5223
		PROJECTED TAKE RATE	62%
		ACTUAL TAKE RATE	56.74%

- **SERVICE INSTALLATIONS TO DATE:**
 - 4780 ACTIVE SUBSCRIBERS AS OF 7/22/25.
- **RUN RATE**
 - NEW ORDERS WEEKLY AVERAGE HAS RISEN EVEN FURTHER FROM 16 LAST MONTH TO 17 THIS MONTH. AVERAGE WEEKLY INSTALLS REMAIN STEADY AT 16 PER WEEK.



**BANDWIDTH
INCREASE.**

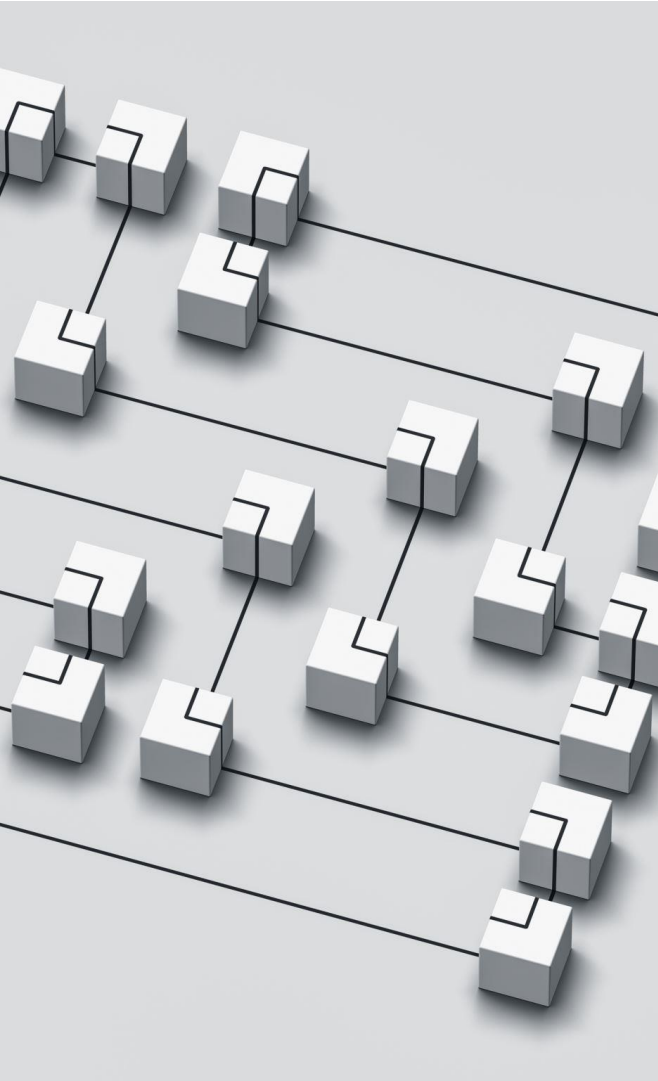
**20Gb CAPCON
REDUNDANT DIA
ORDER IN
PROGRESS.**



ACCORD TIE-IN

IN PROGRESS





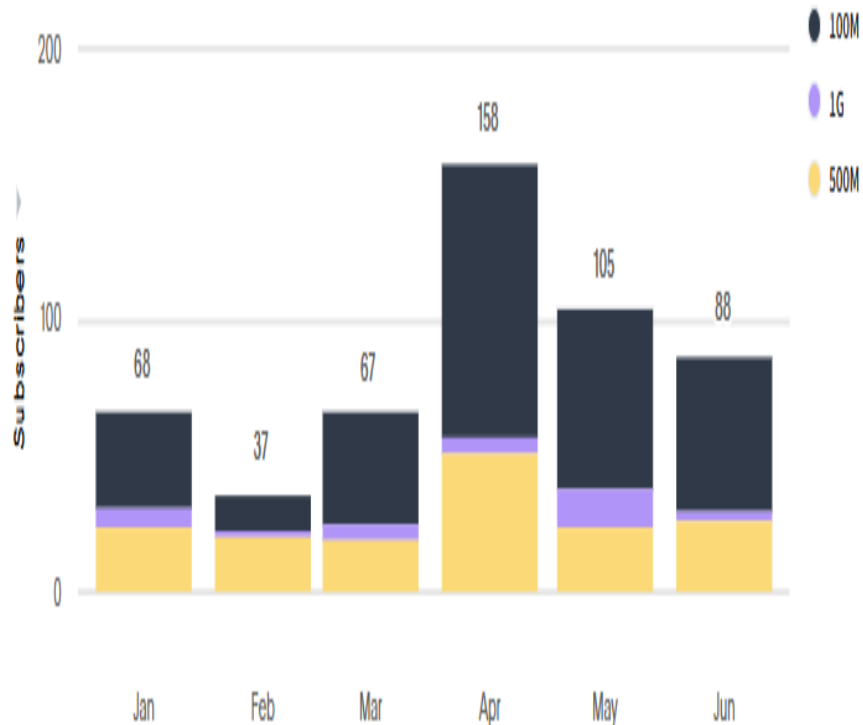
P2P STATUS REPORT

- P2P NETWORK UPDATE.
 - RAPID RENTAL NEW ISP CUSTOMER
 - SERVICE INSTALLATION COMPLETED
 - ORLAND LEGION – NEW ISP CUSTOMER
 - SERVICE INSTALLATION COMPLETED

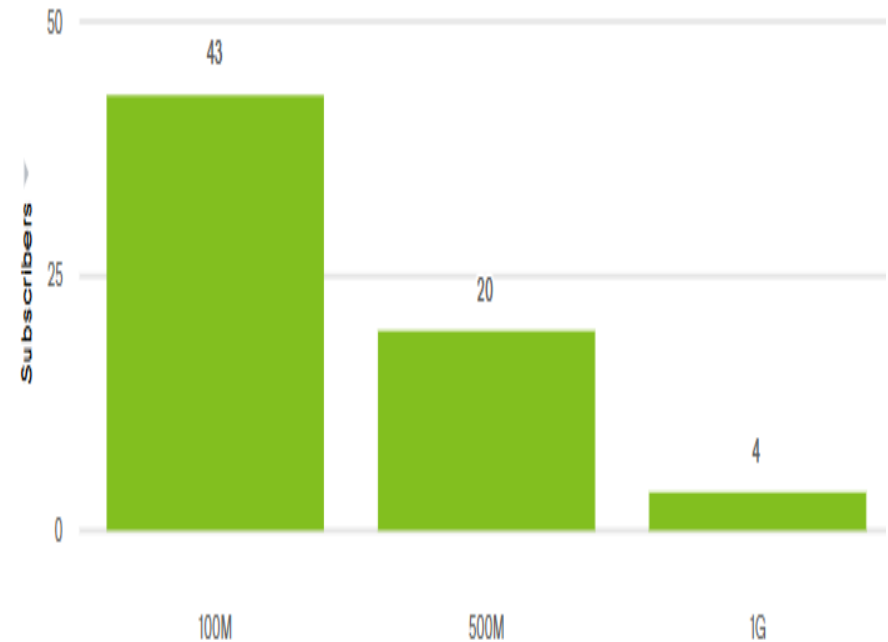
SUBSCRIBER STATISTICS

CONTINUING TO SEE AN UPTICK IN SUBSCRIBER COUNT

Acquisition Rate & Insights



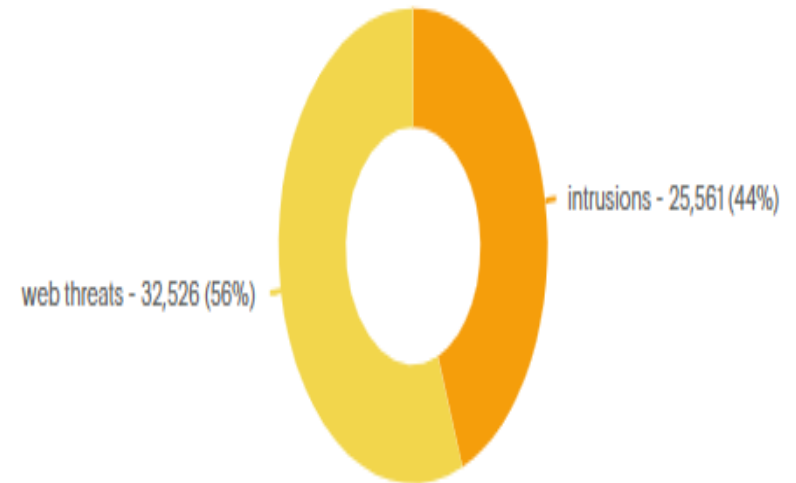
New Subscribers by Service Tier & Technology



STATISTICS CONT'D

- IN THE LAST TWO MONTHS WE HAVE BLOCKED 35,526 WEB THREATS AND 40,705 INTRUSIONS AND 0 VIRUSES FOR OUR MEMBERS

Blocked Threats Insights



Agenda

Steuben County REMC

Regular Board of Directors Meeting

July 28, 2025

1. Call to Order
2. Roll Call
3. General Consent Items
 - a. Agenda
 - b. Minutes of June 30, 2025 Board Meeting
 - c. Bills
 - d. Director Expenses
 - e. New Hookups
 - f. New Memberships
 - g. IUPPS Update
4. Informative Reports
 - a. CEO Financial Report
 - b. Re-Comm Update
 - c. Operation Round Up
 - d. Safety Meeting
 - e. WVPA Board Meeting
 - f. Member Services Report
 - g. Cyber Security
 - h. Broadband Update
 - i. Committee Appointments for 2025-2026
 - j. KRTA
 - k.
5. Executive Session
 - a.
6. Decisions Needed
 - a. CFC Voting Delegate
7. Corporate Council Report
 - a.
8. Other Business
9. Calendar & Announcements
 - a. Next Regular Meeting August 25, 2025
10. Adjournment

ANNUAL MEETING

DISTRICTS UP FOR ELECTION

2026	District 1	Gary Shough
	District 2	Gus Reed
	District 9	Marc Nelson
2027	District 4	Mike Kurtz
	District 5	Carter Snider
	District 8	Larry Jack
2028	District 3	Keith Keller
	District 6	Neasa Kalme
	District 7	Kyle Stockwell

Standing Committees until July 2026

Annual Meeting

Keith Keller
Neasa Kalme
Kyle Stockwell

Capital Credits

Mike Kurtz
Carter Snider
Larry Jack

Labor

Gary Shough
Gus Reed
Marc Nelson

Broadband Committee

Marc Nelson
Neasa Kalme
Carter Snider

By-Law Committee

Mike Kurtz
Kyle Stockwell
Keith Keller

Agenda

Steuben County REMC

Regular Board of Directors Meeting

July 28, 2025

1. Call to Order
2. Roll Call
3. General Consent Items
 - a. Agenda
 - b. Minutes of June 30, 2025 Board Meeting
 - c. Bills
 - d. Director Expenses
 - e. New Hookups
 - f. New Memberships
 - g. IUPPS Update
4. Informative Reports
 - a. CEO Financial Report
 - b. Re-Comm Update
 - c. Operation Round Up
 - d. Safety Meeting
 - e. WVPA Board Meeting
 - f. Member Services Report
 - g. Cyber Security
 - h. Broadband Update
 - i. Committee Appointments for 2025-2026
 - j. KRTA
 - k.
5. Executive Session
 - a.
6. Decisions Needed
 - a. CFC Voting Delegate
7. Corporate Council Report
 - a.
8. Other Business
9. Calendar & Announcements
 - a. Next Regular Meeting August 25, 2025
10. Adjournment

STEUBEN COUNTY RURAL ELECTRIC MEMBERSHIP CORPORATION
IN053

RATIO CATEGORIES	SYSTEM VALUE	U.S. MEDIAN	STATE IN MEDIAN	CONSUMER SIZE (9,000 - 11,999) MEDIAN
FINANCIAL RATIOS				
11 MDSC (2 OF 3 YEAR HIGH AVERAGE)	2.16	1.96	2.41	1.95
7 TIER (2 OF 3 YEAR HIGH AVERAGE)	2.51	2.89	3.27	2.86
23 BLENDED INTEREST RATE (%)	4.08	3.76	4.08	3.65
16 EQUITY AS A % OF ASSETS	33.39	44.51	52.14	45.99
24 ANNUAL CAPITAL CREDITS RETIRED PER TOTAL EQUITY (%)	N/A	2.17	1.86	2.72
REVENUE & EXPENSE RATIOS				
89 POWER COST PER TOTAL KWH SOLD (MILLS)	84.10	76.67	87.95	77.66
103 TOTAL OPERATING EXPENSES PER TOTAL KWH SOLD (MILLS)	26.88	29.61	25.93	33.98
36 ELECTRIC REVENUE PER KWH SOLD (MILLS)	120.28	124.99	128.90	131.82
GROWTH RATIOS				
115 ANNUAL GROWTH IN NUMBER OF CONSUMERS (%)	0.16	0.84	0.53	0.51
114 ANNUAL GROWTH IN KWH SOLD (%)	3.69	1.65	2.39	0.77
PLANT RATIO				
123 TUP INVESTMENT PER CONSUMER (\$)	8,202.13	8,191.44	7,634.59	8,709.27

HIGHS & LOWS BY RATIO CATEGORIES	# OF RATIOS IN TOP 10% OF U.S.	# OF RATIOS IN LOW 10% OF U.S.
BASE GROUP (RATIOS 1-5)	0	1
FINANCIAL (RATIOS 6-32)	2	0
REVENUE & MARGINS (RATIOS 33-59)	0	2
SALES (RATIOS 60-76)	1	0
CONTROLLABLE EXPENSES (RATIOS 77-87)	0	1
FIXED EXPENSES (RATIOS 88-102)	1	0
TOTAL EXPENSES (RATIOS 103-107)	0	0
EMPLOYEES (RATIOS 108-113)	0	0
GROWTH (RATIOS 114-121)	2	0
PLANT (RATIOS 122-145)	4	0



© NRUCFC Copyrighted Materials

The formulas, computations and information contained in these materials are protected by copyright and other laws. In CFC's continued effort to provide our members with value-added services, these materials have been furnished to you solely for your system's own business purposes. The CFC Key Ratio Trend Analysis is confidential and proprietary to CFC, and should only be shared with your cooperative and its trusted legal and accounting advisers. Use of these materials should be carefully considered with all other relevant data or information that may be important or specific to your system or cooperative.

2024 KEY RATIO TREND ANALYSIS (KRTA)
EXECUTIVE SUMMARY FOR INDEPENDENT COOPERATIVES
STEBEN COUNTY RURAL ELECTRIC MEMBERSHIP CORPORATION
IN053

06/18/2025 - V583 2025/06/18

RATIO CATEGORIES	SYSTEM VALUE	U.S. MEDIAN	STATE IN MEDIAN	CONSUMER SIZE (9,000 - 11,999) MEDIAN
FINANCIAL RATIOS				
11 MDSC (2 OF 3 YEAR HIGH AVERAGE)	2.16	2.11	2.53	2.01
7 TIER (2 OF 3 YEAR HIGH AVERAGE)	2.51	2.94	3.31	3.00
23 BLENDED INTEREST RATE (%)	4.08	4.29	4.31	4.13
16 EQUITY AS A % OF ASSETS	33.39	48.58	52.19	51.85
24 ANNUAL CAPITAL CREDITS RETIRED PER TOTAL EQUITY (%)	N/A	2.19	1.37	2.56
REVENUE & EXPENSE RATIOS				
89 POWER COST PER TOTAL KWH SOLD (MILLS)	84.10	74.41	87.52	74.31
103 TOTAL OPERATING EXPENSES PER TOTAL KWH SOLD (MILLS)	26.88	28.70	26.41	33.03
36 ELECTRIC REVENUE PER KWH SOLD (MILLS)	120.28	123.36	128.42	127.94
GROWTH RATIOS				
115 ANNUAL GROWTH IN NUMBER OF CONSUMERS (%)	0.16	0.80	0.44	0.43
114 ANNUAL GROWTH IN KWH SOLD (%)	3.69	1.38	2.12	0.23
PLANT RATIO				
123 TUP INVESTMENT PER CONSUMER (\$)	8,202.13	8,505.20	7,801.29	9,267.60

HIGHS & LOWS BY RATIO CATEGORIES	# OF RATIOS IN TOP 10% OF U.S.	# OF RATIOS IN LOW 10% OF U.S.
BASE GROUP (RATIOS 1-5)	0	0
FINANCIAL (RATIOS 6-32)	2	1
REVENUE & MARGINS (RATIOS 33-59)	0	0
SALES (RATIOS 60-76)	1	0
CONTROLLABLE EXPENSES (RATIOS 77-87)	0	0
FIXED EXPENSES (RATIOS 88-102)	1	1
TOTAL EXPENSES (RATIOS 103-107)	0	0
EMPLOYEES (RATIOS 108-113)	0	0
GROWTH (RATIOS 114-121)	2	0
PLANT (RATIOS 122-145)	5	1



© NRUCFC Copyrighted Materials

The formulas, computations and information contained in these materials are protected by copyright and other laws. In CFC's continued effort to provide our members with value-added services, these materials have been furnished to you solely for your system's own business purposes. The CFC Key Ratio Trend Analysis is confidential and proprietary to CFC, and should only be shared with your cooperative and its trusted legal and accounting advisers. Use of these materials should be carefully considered with all other relevant data or information that may be important or specific to your system or cooperative.

Agenda

Steuben County REMC

Regular Board of Directors Meeting

July 28, 2025

1. Call to Order
2. Roll Call
3. General Consent Items
 - a. Agenda
 - b. Minutes of June 30, 2025 Board Meeting
 - c. Bills
 - d. Director Expenses
 - e. New Hookups
 - f. New Memberships
 - g. IUPPS Update
4. Informative Reports
 - a. CEO Financial Report
 - b. Re-Comm Update
 - c. Operation Round Up
 - d. Safety Meeting
 - e. WVPA Board Meeting
 - f. Member Services Report
 - g. Cyber Security
 - h. Broadband Update
 - i. Committee Appointments for 2025-2026
 - j. KRTA
 - k.
5. Executive Session
 - a.
6. Decisions Needed
 - a. CFC Voting Delegate
7. Corporate Council Report
 - a.
8. Other Business
9. Calendar & Announcements
 - a. Next Regular Meeting August 25, 2025
10. Adjournment

August 2025

The power of human connections

Steuben County REMC

Schedule of Events

- **Aug. 11-12**– WVPA will be holding their Member Conference and Board Meeting in downtown Indy.
- **Aug. 20**– IEC will be holding its regular Board of Directors meeting at their Cooperative office in Indy at 10:00 a.m.t.
- **Aug. ??**– At the time of this publication the date and topic for this month's safety meeting had not yet been set.
- **Aug. 25**– Steuben County REMC's regular Board of Director's meeting beginning at 6:00pm.
- **Aug. 27**– The Gray Mediation will be conducted in Fort Wayne. Kate Sheets from the Parr firm will be representing Federated and us in the case and Kevin Keiser will be attending.

Sun	Mon	Tue	Wed	Thu	Fri	Sat
31					1	2
3	4	5	6	7	8	9
10	11 WVPA Member Conference Indy	12	13	14	15	16
17	18	19	20 IEC B-Mtg.	21	22	23
24	25 REMC B-Mtg.	26	27 Gray Mediation	28	29	30

P.O. Box 359
1212 S Wayne St.
Angola IN 46703

Phone: 260/665-3563
Fax: 260/665-7495
Email: remcsteuben@remcsteuben.com



Touchstone EnergySM