



REGULAR BOARD OF DIRECTORS MEETING
STEUBEN COUNTY REMC
AGENDA
March 30th, 2026 at 6:00pm



ELECTRIC • BROADBAND

REGULAR BOARD OF DIRECTORS MEETING

STEBEN COUNTY REMC

AGENDA

March 30th, 2026, at 6:00pm

1. **Call to Order**
2. **Roll Call**
3. **General Consent Items**
 - a. Agenda
 - b. Minutes of February 23, 2026, Board Meeting
 - c. Special Board Minutes of March 24, 2026
 - d. Bills
 - e. Director Expenses
 - f. New Hookups
 - g. New Memberships
 - h. IUPPS Update
4. **Informative Reports**
 - a. CEO Financial Report
 - b. Re-Comm Update
 - c. Operation Round Up
 - d. Safety Meeting
 - e. WVPA Board Meeting
 - f. NRECA Power Exchange Review
 - g. Member Services Report
 - h. Broadband Update
 - i. Rate Design Discussion
 - j. Strategic Planning Discussion
 - k. Attorney Interview Discussion
 - l. Annual Meeting Update
 - m. ACSI Review
5. **Executive Session**
 - a.
6. **Corporate Council Report**
 - a.
7. **Other Business**
 - a. NRECA Legislative Conference April 26-29th
 - b. CFC Forum- June 2026
 - c. IEC Director's Courses
8. **Calendar & Announcements**
 - a. Next Regular Meeting April 20, 2026
9. **Adjournment**

Steuben County REMC

Monthly Operating Report

	Year to Date			Feb-26	This Month			
	Last year	This Year	Budget	Variance	Last Year	This Year	Budget	Variance
	Operating Revenue	\$5,354,498	\$5,398,128	\$5,406,139	-\$8,011	\$2,710,902	\$2,748,999	\$2,754,057
Kwh Sold	38,237,674	38,178,708	0	38,178,708	19,331,460	19,332,424	0	19,332,424
Cost of Purchased Power	\$3,049,495	\$2,970,877	\$2,924,587	\$46,290	\$1,444,454	\$1,404,547	\$1,457,344	-\$52,797
Kwh Purchased	39,065,520	38,168,532	0	38,168,532	18,377,327	17,595,588	0	17,595,588
Distribution Expense - Operations	\$141,236	\$77,189	\$117,717	-\$40,528	\$71,119	\$25,119	\$58,302	-\$33,183
Distribution Expense - Maintenance	\$242,938	\$209,704	\$289,993	-\$80,289	\$98,728	\$83,653	\$144,458	-\$60,805
Consumer Accounts Expense	\$76,762	\$76,954	\$92,840	-\$15,886	\$37,603	\$40,553	\$45,910	-\$5,357
Consumer Services & Info Exp.	\$16,563	\$13,505	\$34,995	-\$21,490	\$13,396	\$5,021	\$15,963	-\$10,942
Sales Expense	\$23,599	\$26,832	\$16,899	\$9,933	\$11,830	\$14,704	\$7,993	\$6,711
Administrative & General Expense	\$493,847	\$633,610	\$593,723	\$39,887	\$251,354	\$324,932	\$274,061	\$50,871
Total Operation & Maintenance Exp.	\$4,044,439	\$4,008,671	\$4,070,754	-\$62,083	\$1,928,484	\$1,898,527	\$2,004,031	-\$105,504
Depreciation & Amortization Exp.	\$481,185	\$511,532	\$517,126	-\$5,594	\$241,997	\$256,220	\$258,748	-\$2,528
Tax Expense - Property	\$22,000	\$24,000	\$24,000	\$0	\$11,000	\$12,000	\$12,000	\$0
Tax Expense - Other	\$0	\$0	\$2,291	-\$2,291	\$0	\$0	\$499	-\$499
Interest on Long Term Debt	\$373,253	\$381,773	\$381,773	\$0	\$187,464	\$191,333	\$191,333	\$0
Interest Charged to Construction(credit)	\$0	\$0	\$0	\$0	\$0	\$0	\$0	\$0
Interest Expense Other	\$0	\$0	\$0	\$0	\$0	\$0	\$0	\$0
Other Deductions	\$0	\$0	\$0	\$0	\$0	\$0	\$0	\$0
Total Cost of Electric Service	\$4,920,877	\$4,925,977	\$4,995,944	-\$69,968	\$2,368,945	\$2,358,080	\$2,466,611	-\$108,531
Patronage Capital & Operating Margins	\$433,620	\$472,151	\$410,195	\$61,956	\$341,957	\$390,919	\$287,446	\$103,473
Non Operating Margins - Interest	\$3,625	\$3,636	\$3,700	-\$64	\$1,796	\$1,809	\$1,850	-\$41
Allowance for Funds Used During Const.	\$0	\$0	\$0	\$0	\$0	\$0	\$0	\$0
Non Operating Margins - Other	\$448	\$510	\$0	\$510	\$224	\$191	\$0	\$191
Generation & Transmission Cap. Credits	\$0	\$0	\$0	\$0	\$0	\$0	\$0	\$0
Other Cap. Credits & Patronage Divid.	\$0	\$0	\$0	\$0	\$0	\$0	\$0	\$0
Extraordinary Items	\$0	\$0	\$0	\$0	\$0	\$0	\$0	\$0
Patronage Capital or Margins	\$437,698	\$476,297	\$413,895	\$62,402	\$343,981	\$392,919	\$289,296	\$103,623

Steuben County REMC

Monthly Operating Report

Feb-26

This Month

	Last year	This Year	Budget	Variance
Operating Revenue	\$2,710,902	\$2,748,999	\$2,754,057	-\$5,058
Kwh Sold	19,331,460	19,332,424	0	19,332,424
Cost of Purchased Power	\$1,444,454	\$1,404,547	\$1,457,344	-\$52,797
Kwh Purchased	18,377,327	17,595,588	0	17,595,588
Distribution Expense - Operations	\$71,119	\$25,119	\$58,302	-\$33,183
Distribution Expense - Maintenance	\$98,728	\$83,653	\$144,458	-\$60,805
Consumer Accounts Expense	\$37,603	\$40,553	\$45,910	-\$5,357
Consumer Services & Info Exp.	\$13,396	\$5,021	\$15,963	-\$10,942
Sales Expense	\$11,830	\$14,704	\$7,993	\$6,711
Administrative & General Expense	\$251,354	\$324,932	\$274,061	\$50,871
Total Operation & Maintenance Exp.	\$1,928,484	\$1,898,527	\$2,004,031	-\$105,504
Depreciation & Amortization Exp.	\$241,997	\$256,220	\$258,748	-\$2,528
Tax Expense - Property	\$11,000	\$12,000	\$12,000	\$0
Tax Expense - Other	\$0	\$0	\$499	-\$499
Interest on Long Term Debt	\$187,464	\$191,333	\$191,333	\$0
Interest Charged to Construction(credit)	\$0	\$0	\$0	\$0
Interest Expense Other	\$0	\$0	\$0	\$0
Other Deductions	\$0	\$0	\$0	\$0
Total Cost of Electric Service	\$2,368,945	\$2,358,080	\$2,466,611	-\$108,531
Patronage Capital & Operating Margins	\$341,957	\$390,919	\$287,446	\$103,473
Non Operating Margins - Interest	\$1,796	\$1,809	\$1,850	-\$41
Allowance for Funds Used During Const.	\$0	\$0	\$0	\$0
Non Operating Margins - Other	\$224	\$191	\$0	\$191
Generation & Transmission Cap. Credits	\$0	\$0	\$0	\$0
Other Cap. Credits & Patronage Divid.	\$0	\$0	\$0	\$0
Extraordinary Items	\$0	\$0	\$0	\$0
Patronage Capital or Margins	\$343,981	\$392,919	\$289,296	\$103,623

Steuben County REMC

Monthly Operating Report

	Year to Date			Feb-26
	Last Year	This Year	Budget	Variance
Operating Revenue	\$5,354,498	\$5,398,128	\$5,406,139	-\$8,011
Kwh Sold	38,237,674	38,178,708	0	38,178,708
Cost of Purchased Power	\$3,049,495	\$2,970,877	\$2,924,587	\$46,290
Kwh Purchased	39,065,520	38,168,532	0	38,168,532
Distribution Expense - Operations	\$141,236	\$77,189	\$117,717	-\$40,528
Distribution Expense - Maintenance	\$242,938	\$209,704	\$289,993	-\$80,289
Consumer Accounts Expense	\$76,762	\$76,954	\$92,840	-\$15,886
Consumer Services & Info Exp.	\$16,563	\$13,505	\$34,995	-\$21,490
Sales Expense	\$23,599	\$26,832	\$16,899	\$9,933
Administrative & General Expense	\$493,847	\$633,610	\$593,723	\$39,887
Total Operation & Maintenance Exp.	\$4,044,439	\$4,008,671	\$4,070,754	-\$62,083
Depreciation & Amortization Exp.	\$481,185	\$511,532	\$517,126	-\$5,594
Tax Expense - Property	\$22,000	\$24,000	\$24,000	\$0
Tax Expense - Other	\$0	\$0	\$2,291	-\$2,291
Interest on Long Term Debt	\$373,253	\$381,773	\$381,773	\$0
Interest Charged to Construction(credit)	\$0	\$0	\$0	\$0
Interest Expense Other	\$0	\$0	\$0	\$0
Other Deductions	\$0	\$0	\$0	\$0
Total Cost of Electric Service	\$4,920,877	\$4,925,977	\$4,995,944	-\$69,968
Patronage Capital & Operating Margins	\$433,620	\$472,151	\$410,195	\$61,956
Non Operating Margins - Interest	\$3,625	\$3,636	\$3,700	-\$64
Allowance for Funds Used During Const	\$0	\$0	\$0	\$0
Non Operating Margins - Other	\$448	\$510	\$0	\$510
Generation & Transmission Cap. Credits	\$0	\$0	\$0	\$0
Other Cap. Credits & Patronage Divid.	\$0	\$0	\$0	\$0
Extraordinary Items	\$0	\$0	\$0	\$0
Patronage Capital or Margins	\$437,698	\$476,297	\$413,895	\$62,402

Monthly Operating Report Fiber

	Year to Date			Feb-26		This Month		
	Last Year	This Year	Budget	Variance	Last Year	This Year	Budget	Variance
	Operating Revenue	\$737,580	\$750,724	\$716,575	\$34,149	\$737,581	\$375,416	\$359,836
Distribution Expense - Operations	\$8,152	\$9,065	\$9,594	-\$529	\$8,152	\$4,508	\$4,798	-\$290
Distribution Expense - Maintenance	\$30,018	\$35,186	\$32,972	\$2,214	\$30,018	\$15,403	\$16,263	-\$860
Consumer Accounts Expense	-\$877	-\$219	\$2,000	-\$2,219	-\$877	\$1,096	\$1,000	\$96
Consumer Services & Info Exp.	\$0	\$0	\$0	\$0	\$0	\$0	\$0	\$0
Sales Expense	\$0	\$0	\$0	\$0	\$0	\$0	\$0	\$0
Administrative & General Expense	\$101,800	\$121,508	\$135,065	-\$13,557	\$101,800	\$79,818	\$67,674	\$12,144
Total Operation & Maintenance Exp.	\$139,093	\$165,540	\$179,631	-\$14,091	\$139,093	\$100,826	\$89,735	\$11,091
Depreciation & Amortization Exp.	\$258,120	\$274,219	\$276,410	-\$2,191	\$258,120	\$137,110	\$138,205	-\$1,095
Tax Expense - Property	\$0	\$0	\$0	\$0	\$0	\$0	\$0	\$0
Tax Expense - Other	\$0	\$0	\$0	\$0	\$0	\$0	\$0	\$0
Interest on Long Term Debt	\$281,258	\$158,973	\$289,773	-\$130,800	\$281,253	\$14,533	\$145,333	-\$130,800
Interest Charged to Construction(credit)	\$0	\$0	\$0	\$0	\$0	\$0	\$0	\$0
Interest Expense Other	\$0	\$0	\$0	\$0	\$0	\$0	\$0	\$0
Other Deductions	\$0	\$0	\$0	\$0	\$0	\$0	\$0	\$0
Total Cost of Electric Service	\$678,465	\$729,532	\$745,814	-\$16,282	\$678,465	\$383,269	\$373,273	\$9,996
Patronage Capital & Operating Margins	\$59,116	\$21,192	-\$29,239	\$50,431	\$59,116	-\$7,852	-\$13,437	\$5,585
Non Operating Margins - Interest	\$0	\$0	\$0	\$0	\$0	\$0	\$0	\$0
Allowance for Funds Used During Const.	\$0	\$0	\$0	\$0	\$0	\$0	\$0	\$0
Non Operating Margins - Other	\$0	\$0	\$0	\$0	\$0	\$0	\$0	\$0
Generation & Transmission Cap. Credits	\$0	\$0	\$0	\$0	\$0	\$0	\$0	\$0
Other Cap. Credits & Patronage Divid.	\$0	\$0	\$0	\$0	\$0	\$0	\$0	\$0
Extraordinary Items	\$0	\$0	\$0	\$0	\$0	\$0	\$0	\$0
Patronage Capital or Margins	\$59,116	\$21,192	-\$23,654	\$44,846	\$59,116	-\$7,852	-\$7,852	\$0

Steuben County REMC

Monthly Operating Report

Feb-26

This Month

	Last Year	This Year	Budget	Variance
Operating Revenue	\$737,581	\$375,416	\$359,836	\$15,580
Distribution Expense - Operations	\$8,152	\$4,508	\$4,798	-\$290
Distribution Expense - Maintenance	\$30,018	\$15,403	\$16,263	-\$860
Consumer Accounts Expense	-\$877	\$1,096	\$1,000	\$96
Consumer Services & Info Exp.	\$0	\$0	\$0	\$0
Sales Expense	\$0	\$0	\$0	\$0
Administrative & General Expense	\$101,800	\$79,818	\$67,674	\$12,144
Total Operation & Maintenance Exp.	\$139,093	\$100,826	\$89,735	\$11,091
Depreciation & Amortization Exp.	\$258,120	\$137,110	\$138,205	-\$1,095
Tax Expense - Property	\$0	\$0	\$0	\$0
Tax Expense - Other	\$0	\$0	\$0	\$0
Interest on Long Term Debt	\$281,253	\$14,533	\$145,333	-\$130,800
Interest Charged to Construction(credit)	\$0	\$0	\$0	\$0
Interest Expense Other	\$0	\$0	\$0	\$0
Other Deductions	\$0	\$0	\$0	\$0
Total Cost of Electric Service	\$678,465	\$383,269	\$373,273	\$9,996
Patronage Capital & Operating Margins	\$59,116	-\$7,852	-\$13,437	\$5,585
Non Operating Margins - Interest	\$0	\$0	\$0	\$0
Allowance for Funds Used During Const.	\$0	\$0	\$0	\$0
Non Operating Margins - Other	\$0	\$0	\$0	\$0
Generation & Transmission Cap. Credits	\$0	\$0	\$0	\$0
Other Cap. Credits & Patronage Divid.	\$0	\$0	\$0	\$0
Extraordinary Items	\$0	\$0	\$0	\$0
Patronage Capital or Margins	\$59,116	-\$7,852	-\$7,852	\$0

Steuben County REMC

Monthly Operating Report

	Year to Date			Feb-26
	Last Year	This Year	Budget	Variance
	Operating Revenue	\$737,580	\$750,724	\$716,575
Distribution Expense - Operations	\$8,152	\$9,065	\$9,594	-\$529
Distribution Expense - Maintenance	\$30,018	\$35,186	\$32,972	\$2,214
Consumer Accounts Expense	-\$877	-\$219	\$2,000	-\$2,219
Consumer Services & Info Exp.	\$0	\$0	\$0	\$0
Sales Expense	\$0	\$0	\$0	\$0
Administrative & General Expense	\$101,800	\$121,508	\$135,065	-\$13,557
Total Operation & Maintenance Exp.	\$139,093	\$165,540	\$179,631	-\$14,091
Depreciation & Amortization Exp.	\$258,120	\$274,219	\$276,410	-\$2,191
Tax Expense - Property	\$0	\$0	\$0	\$0
Tax Expense - Other	\$0	\$0	\$0	\$0
Interest on Long Term Debt	\$281,258	\$158,973	\$289,773	-\$130,800
Interest Charged to Construction(credit)	\$0	\$0	\$0	\$0
Interest Expense Other	\$0	\$0	\$0	\$0
Other Deductions	\$0	\$0	\$0	\$0
Total Cost of Electric Service	\$678,465	\$729,532	\$745,814	-\$16,282
Patronage Capital & Operating Margins	\$59,116	\$21,192	-\$29,239	\$50,431
Non Operating Margins - Interest	\$0	\$0	\$0	\$0
Allowance for Funds Used During Const	\$0	\$0	\$0	\$0
Non Operating Margins - Other	\$0	\$0	\$0	\$0
Generation & Transmission Cap. Credits	\$0	\$0	\$0	\$0
Other Cap. Credits & Patronage Divid.	\$0	\$0	\$0	\$0
Extraordinary Items	\$0	\$0	\$0	\$0
Patronage Capital or Margins	\$59,116	\$21,192	-\$23,654	\$44,846

February Cash Balance

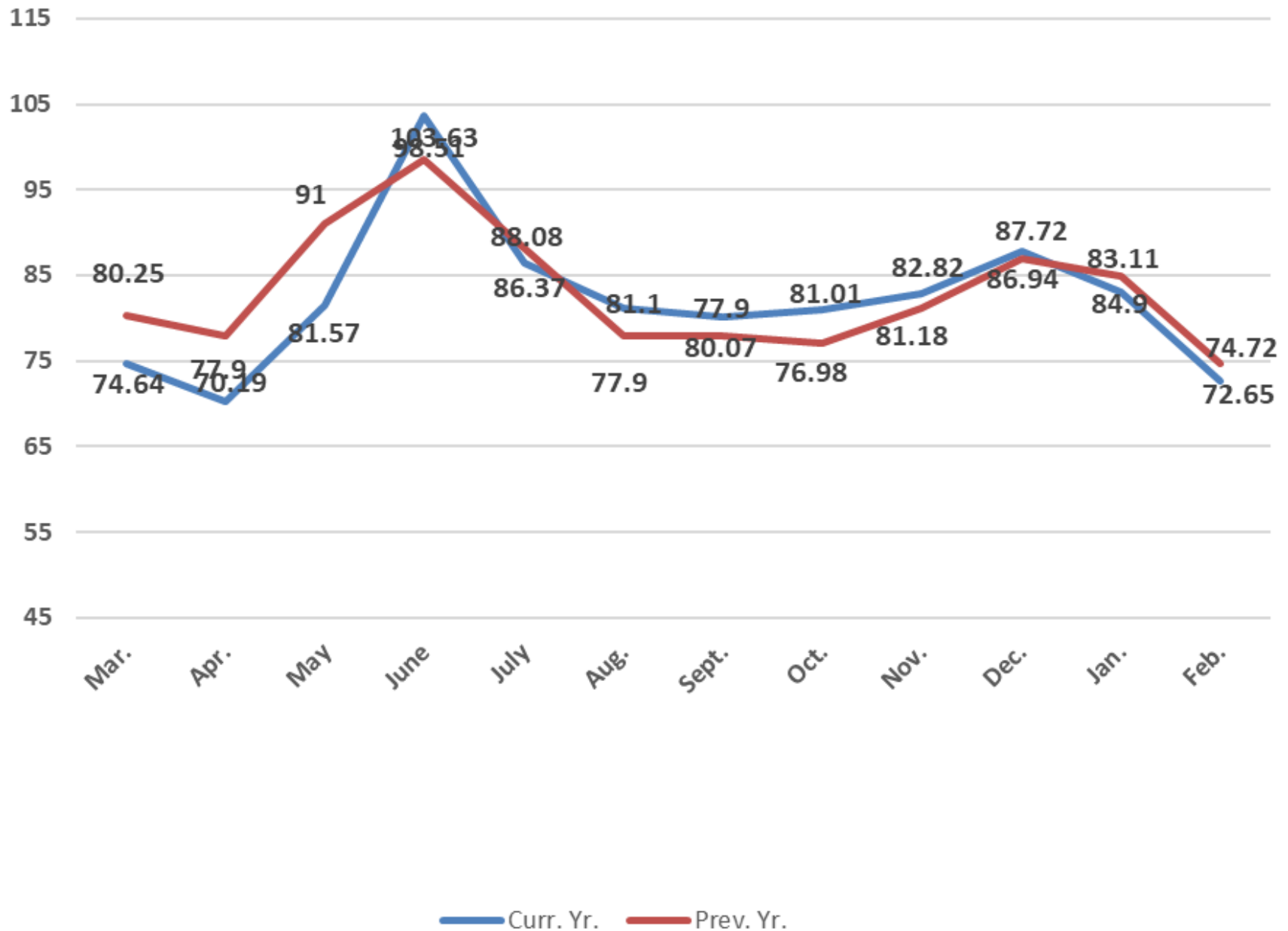
2/28/2026

Farmers State Bank-Checking	\$ 266,896.66
Farmers State ACH	\$ 100,006.43
1st. Federal S&L	\$ 308,486.71
Green Data Deposit	\$ 270,000.00
Capital Credits	\$ 12,060.08
Working Fund	\$600.00
	<hr/>
Total	\$958,049.88
WVPA 2025 Cap Credit	\$41,254.46
WVPA 2024 Cap Credit	\$ 0.00
WVPA 2023 Cap Credit	\$3,667.90

February 2026 Top 40

ACCOUNT	NAME	METER USAGE	CHARGE AMOUNT	
861003	PINE MANOR INC.	1,745,000	146,613.60	
238502	COLD HEADING CO	1,014,000	118,580.91	
906701	CARDINAL IG	868,800	98,798.84	
13713801	FAMILY DOLLAR	690,500	74,777.67	
13840801	BRIGHTMARK	544,300	60,142.37	
675801	NUCOR BUILDING SYSTEMS	334,800	39,208.55	
641005	VENTRA ANGOLA, LLC	243,600	29,524.54	
945001	719500 MEIJER, MAIL STOP #4	222,960	24,141.53	
930100	VESTIL MANUFACTURING CORP	193,900	23,974.54	
13851400	TRUECORE LLC	181,200	20,613.41	
955101	DIVERSIFIED COATING	147,520	17,192.89	
1051700	MENARD INC	129,600	15,862.74	
144404	THE GREEN DATA CENTRE LLC	222,800	10,948.69	
1057401	STEUBEN LAKES REGIONAL	102,080	10,789.97	
709101	MSD OF STEUBEN COUNTY	84,000	10,644.04	
100001	CON-WAY CENTRAL EXPRESS	92,120	9,739.07	
1037601	FED EX FREIGHT EAST INC	89,280	9,471.91	
1041901	TECHO-BLOC MIDWEST CORP	70,440	8,941.19	
700802	CPG OHIO LLC	63,000	7,313.63	
907101	METAL SPINNERS	54,400	7,197.85	
975900	MSD OF STEUBEN COUNTY	56,400	6,632.86	
956205	HIGH POINT HEIFERS LLC	59,280	6,544.94	
13825301	WINGATE ANGOLA	56,800	6,448.14	
527800	TOWN OF FREMONT	55,680	5,803.16	
943000	YMCA OF STEUBEN COUNTY INC	54,320	5,756.38	
530302	LV Petroleum LLC	49,440	5,378.54	
876703	VESTIL MANUFACTURING CORP	40,080	5,316.23	
13821000	VESTIL MANUFACTURING CORP	35,960	4,269.96	
13614400	SMITH MARK	37,200	4,034.44	
1042001	OLD CASTLE LAWN & GARDEN	30,840	3,918.77	
1038600	GLENDARIN HILLS GOLF CLUB	35,680	3,896.88	
24201	SUN NG JELLY BARTON LAKE RV LL	36,000	3,836.64	
617702	CPG OHIO LLC	31,600	3,790.30	
786101	JICI	29,400	3,741.22	
269701	ITR CONCESSION COMPANY	33,920	3,587.72	
13751901	ANGOLA HOGBACK LAKE KOA	34,200	3,579.85	
571101	STOCKWELL FARMS INCORPORATED	31,578	3,418.23	
712500	EMF CORPORATION	25,500	3,300.39	
946503	STOOPS FREIGHTLINER	30,000	3,282.22	
681700	CITY OF ANGOLA	26,000	3,132.65	
	February Totals	7,884,178	\$ 834,147.46	0.1058002
	January Totals	8,385,164	\$ 841,100.40	0.1003082

Power Cost in Mills / Kwh Sold

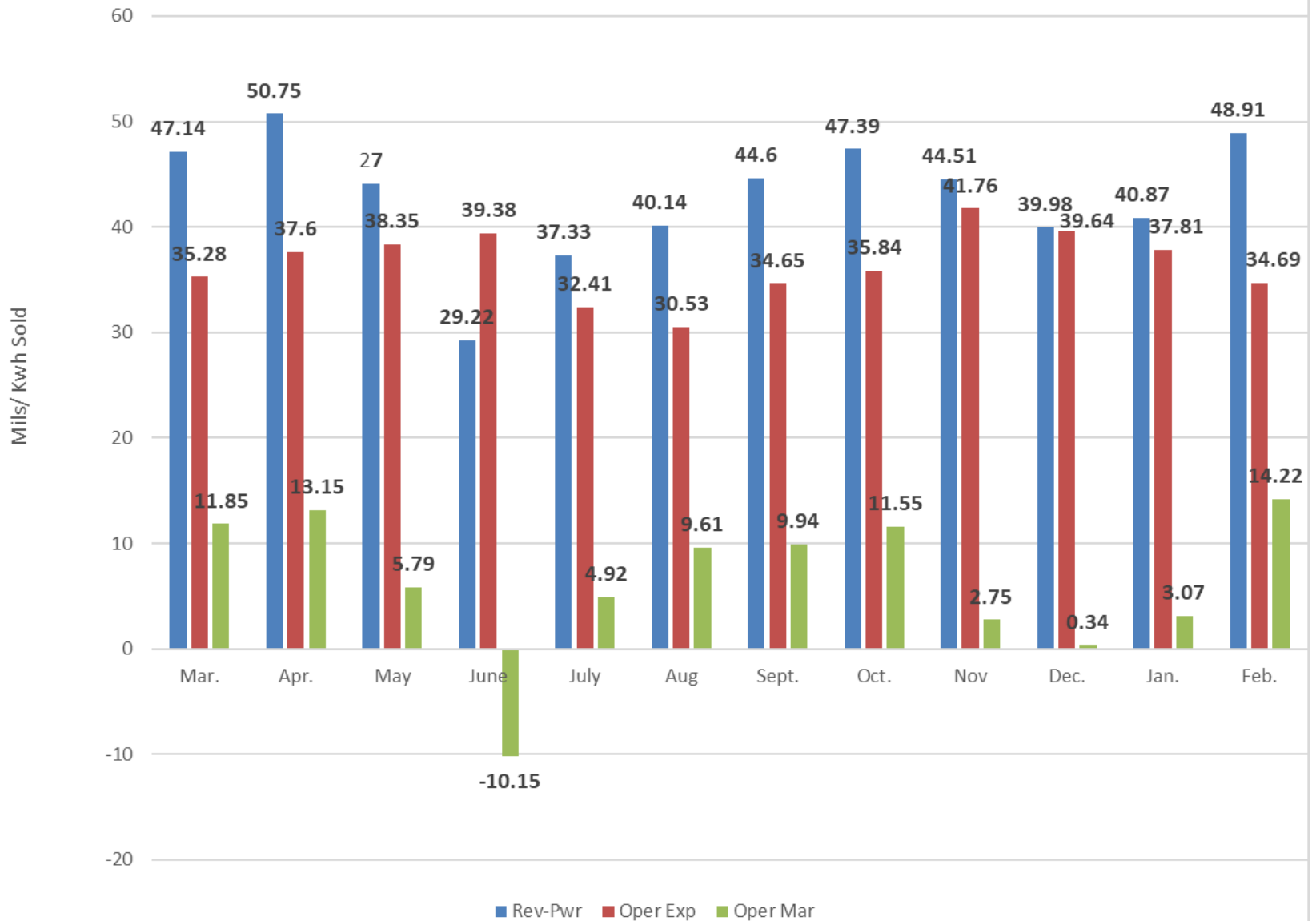


Oper.Exp. in Mills/KWH Sold

O&M Con A&G DP&TX Int

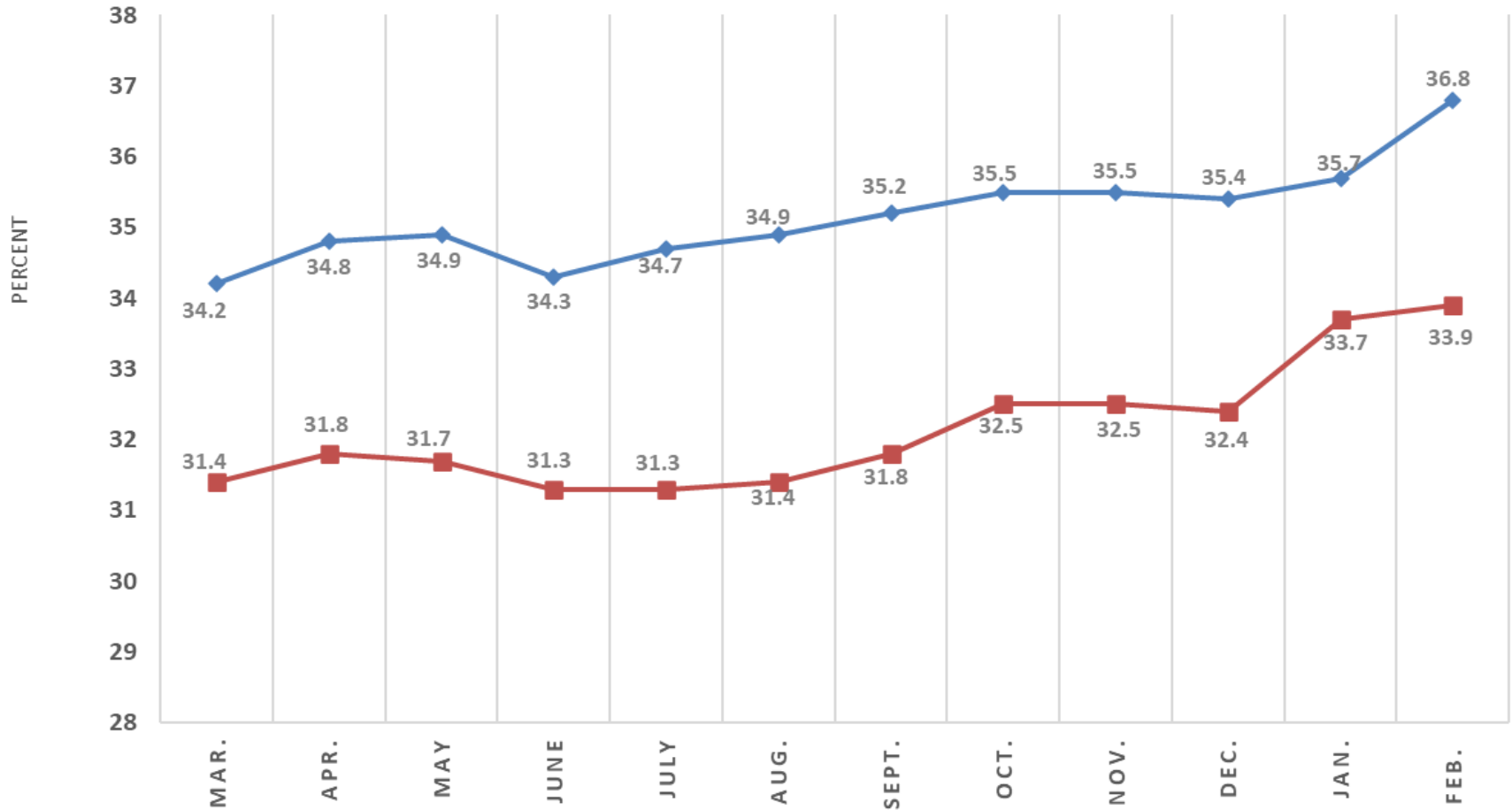


Gross Margin - Oper Exp = Oper Margin

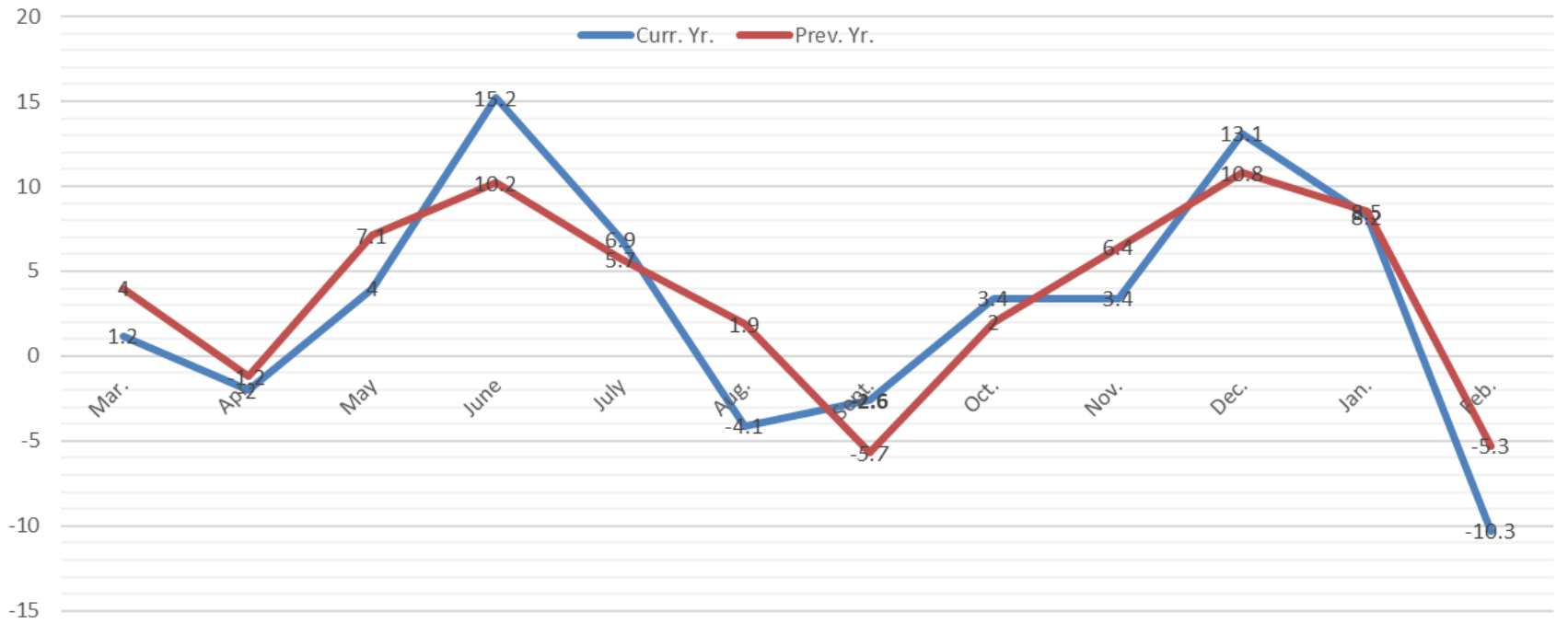


EQUITY AS A % OF TOTAL ASSETS

Series1 Series2



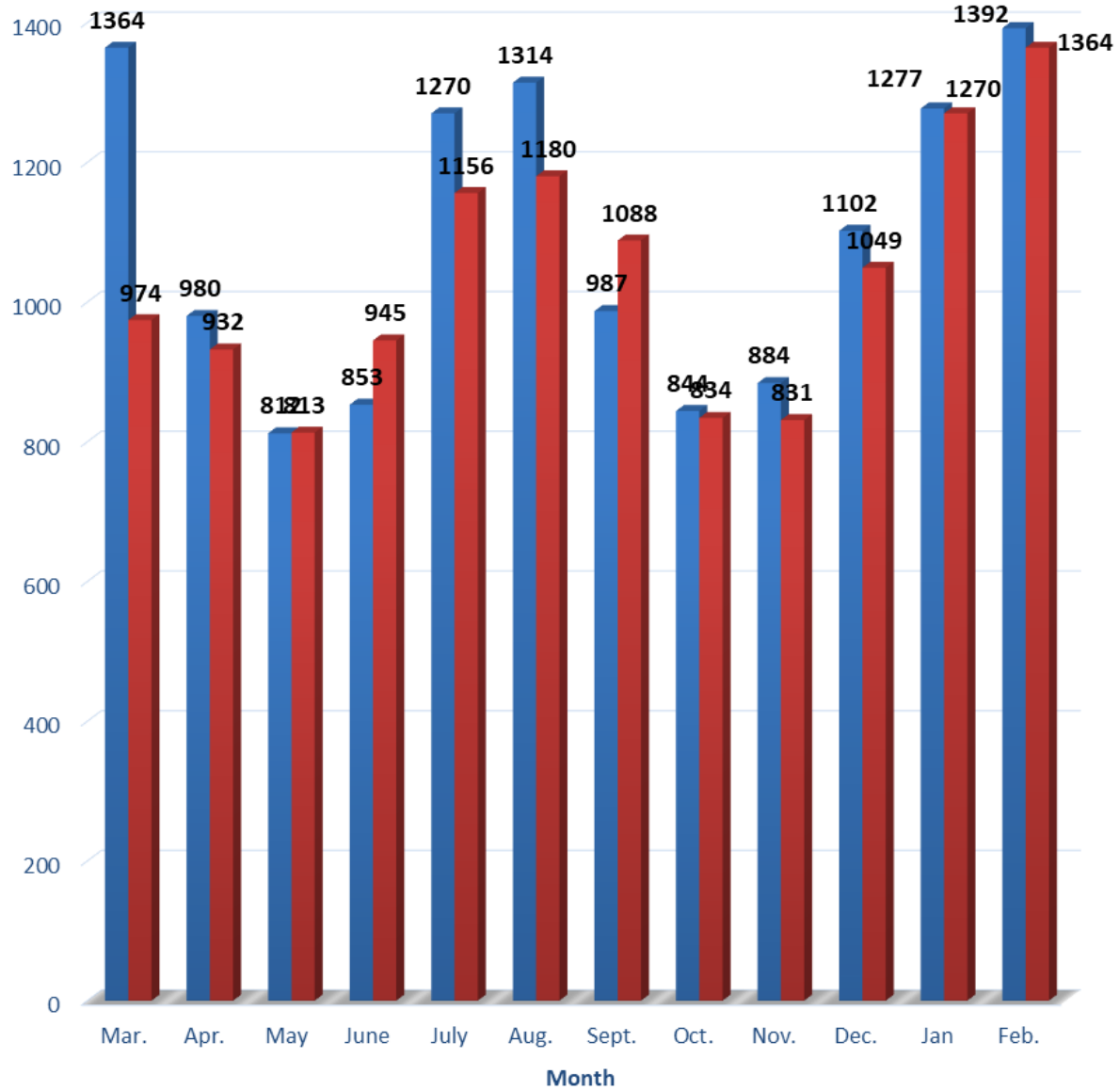
Percent Line Loss



2025 JAN.= -5.3%

2026 JAN.= -10.3%

Average Residential Kwh Consumption



■ Curr. Yr. ■ Prev. Yr.

C&I Average Consumption





ELECTRIC • BROADBAND

REGULAR BOARD OF DIRECTORS MEETING

STEUBEN COUNTY REMC

AGENDA

March 30th, 2026 at 6:00pm

Outage Report

SAIDI (System Average Interruption Duration Index)

SAIDI = (Sum of all customer interruption durations) / (Total number of customers served)

February Outage Report

Monthly SAIDI Score	Annual SAIDI Score	Total Monthly Outages	Total Members Affected this Month	Y to D Members Affected	Avg. Number of Members
1.1	6.8	28	133	586	10832

Top 3 Monthly Cause	Duration	Members Affected
<i>Small Animals</i>	2/10- 11:16AM- 12:31PM 2/15- 10:47AM- 12:08PM 2/19- 10:18AM- 11:00AM 2/27- 9:30AM- 10:15AM	4
<i>Fire</i>	2/8- 4:12PM- 8:15AM 2/9 2/9- 9:15AM 2/9- 1:19PM- 7:05PM	5
<i>Unknown Causes</i>	2/3- 5:53PM- 7:10PM 2/8- 12:56PM- 4:54PM 2/18- 7:56AM- 8:31AM	142

Monthly Outage Highlights
2/3- OCR Handle down- 725 W
2/9- 3 House Fires in one day





ELECTRIC • BROADBAND

REGULAR BOARD OF DIRECTORS MEETING

STEUBEN COUNTY REMC

AGENDA

March 30th, 2026 at 6:00pm

Re-Comm Update

- Working work NRTC to change the name Re-Comm to Steuben County REMC. This will allow Capital Credits to come directly to the REMC in preparation to close the Re-Comm deposit account in the future.



ELECTRIC • BROADBAND

REGULAR BOARD OF DIRECTORS MEETING

STEBEN COUNTY REMC

AGENDA

March 30th, 2026 at 6:00pm

Operation Round Up Report



- Operation Round Up
 - One committee member has stepped down
 - Another will term-out in April (Need 2 New Committee Member)
 - Committee Member Requirements:
 - Member or spouse of member
 - Permanent Resident
 - At least 18 years old
 - Cannot be on the Steuben County Community Foundation Board, conflict of interest



Suggested committee members:

- **Tom Stoy** (Stoy Farms) owner
- **Geneva Yarnelle** (Navigate Insurance Agency) Producer
- **Melissa Budak** (Key Bank) Relationship Manager
- **Greg Smith** (John D Smith & Sons) Farmer
- **Paul Stepp** (State Farm Insurance) Retired
- **Andrew Hershman** (Indiana Northeastern Railroad) Steuben County EDC- vice chair
- **Rick Shipe** (Shipe Well Drilling) Owner, County Commissioner
- **Russ Werling** (Steuben County REMC) Retired

**Please rank in order of preference, in case some are not interested



REGULAR BOARD OF DIRECTORS MEETING

STEUBEN COUNTY REMC

AGENDA

March 30th, 2026 at 6:00pm

Safety Report

Safety Report
Steuben County REMC
Board of Directors
March 24, 2026

March 3, 2026 Chris Hamilton from IEC was here for the March safety meeting with the topic being De-Energizing for personal protection.

March 11, 2026- Marty Jones from IEC's Regulatory Compliance department was here for the monthly compliance visit.

There were no injuries or loss of time reported.



ELECTRIC • BROADBAND

REGULAR BOARD OF DIRECTORS MEETING

STEUBEN COUNTY REMC

AGENDA

March 30th, 2026 at 6:00pm

Wabash Valley Power Alliance Board Meeting Report



REGULAR BOARD OF DIRECTORS MEETING

STEUBEN COUNTY REMC

AGENDA

March 30th, 2026 at 6:00pm

NRECA Power Exchange Review



Steuben County REMC

ELECTRIC • BROADBAND

REGULAR BOARD OF DIRECTORS MEETING

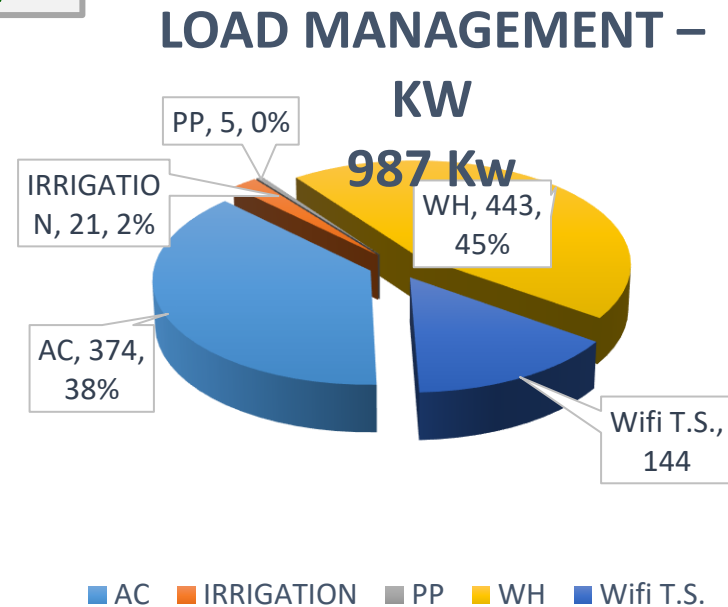
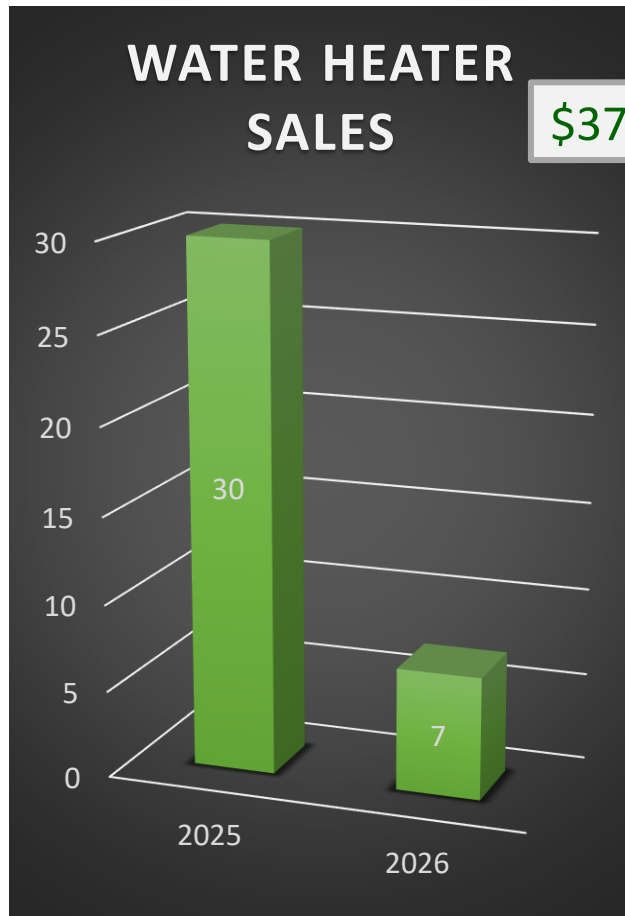
STEBEN COUNTY REMC

AGENDA

March 30th, 2026 at 6:00pm

Member Services Report

MARKETING & MEMBER SERVICES



MARKETING & MEMBER SERVICES

2026
SECURITY LIGHT
INSTALLS/REMOVALS

1- REMOVALS
(0) this month
0 - NEW
(0) this month
5 - SWAP/ MAINT.
(5) this month



5 Members

67 Units



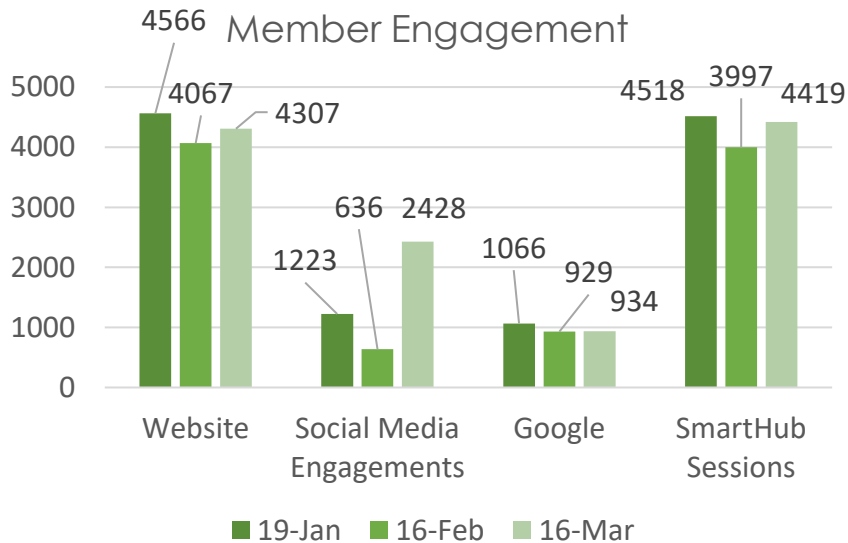
EV CHARGER STATISTICS
3524 VEHICLES CHARGED
17,529 kWh's CONSUMED
6.06 HRS - AVG SESSION

10 VEHICLES CHARGED
544 kWh's CONSUMED

MARKETING & MEMBER SERVICES

INCLUDES PMT,
VIEW BILL, VIEW
USAGE, ECT...

9,927 Subscribers



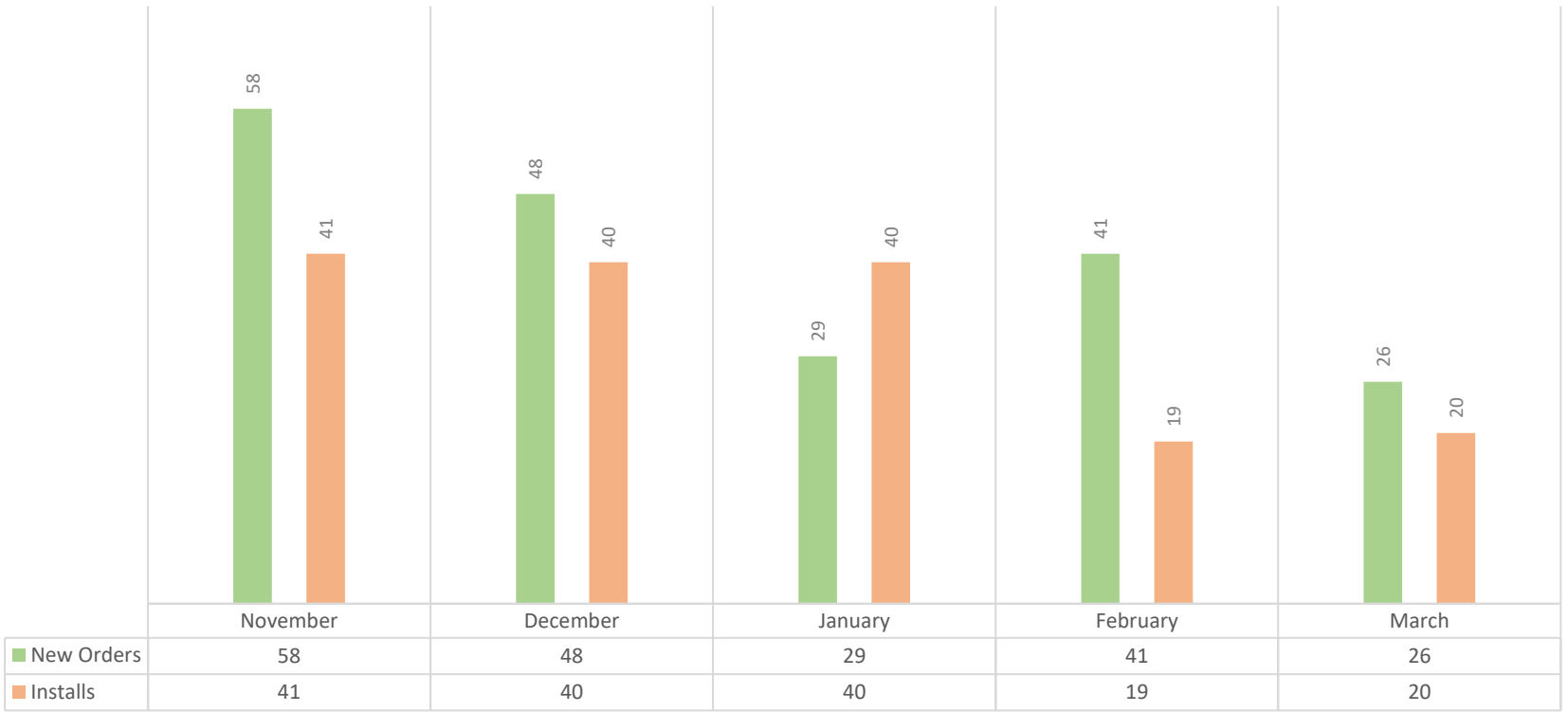
Website

Total		4,307 100% of total
1	Home Steuben County REMC	1,940 (45.04%)
2	Storm/ Outage Center Steuben County REMC	757 (17.58%)
3	SmartHub Steuben County REMC	235 (5.46%)
4	Packages/ Pricing Steuben County REMC	202 (4.69%)
5	Contact Us Steuben County REMC	163 (3.78%)
6	How to make a payment Steuben County REMC	138 (3.2%)
7	Check Availability Steuben County REMC	110 (2.55%)
8	Rebate Programs Steuben County REMC	75 (1.74%)
9	Board of Directors Steuben County REMC	74 (1.72%)
10	Log in Steuben County REMC	69 (1.6%)

BROADBAND TAKE RATE PER ZONE

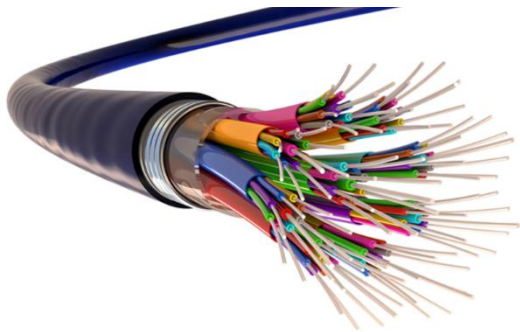
NEW ORDERS/INSTALLS

■ New Orders ■ Installs



3/17/2026

	Zone	Marketing Zone	Active	Pendir	2.17	3.16	NEW	Total Membe	% Take
PHASE 1	1	OTTER NORTHWEST	98	1	98	99	1	118	81%
	2	OTTER NORTHEAST	387	1	388	388	0	632	61%
	3	OTTER SOUTH	728	2	728	730	2	973	74%
	4	ORLAND MP	210	1	211	211	0	361	60%
	5	HELMER MP	150	0	150	150	0	197	74%
PHASE 2	6	NEVADA NORTH	222	1	223	223	0	382	59%
	7	NEVADA NORTHEAST	381	2	382	383	1	874	43%
	8	NEVADA WEST	446	0	444	446	2	1110	39%
	9	NEVADA EAST	250	0	249	250	1	519	48%
PHASE 3	10	SCOTT NORTHWEST	356	7	362	363	1	549	62%
	11	SCOTT WEST, NORTHEAST, SOUTH	91	0	90	91	1	166	52%
	12	RUHL	217	1	218	218	0	404	52%
	13	ANGOLA N&W	272	1	273	273	0	427	62%
	14	SCOTT EAST	446	1	446	447	1	738	59%
PHASE 4	15	ANGOLA SOUTH	234	1	235	235	0	374	61%
	16	STEUBENVILLE	211	1	211	212	1	423	47%
	17	WATERLOO	69	1	67	70	3	177	37%
P2P			347	3	343	347	4		
Total			5115	24		5139	18	8424	60%



BROADBAND UPDATE

MARCH 2026



SERVICE INSTALLATION REPORT

	NEW ORDERS HISTORICAL AVERAGE	14.32727273
	AVERAGE NEW ORDERS /WEEK (LAST TWO MONTHS)	9
	TODAY	3/25/2026
	DAYS LEFT IN THE YEAR	281
	WEEKS LEFT IN THE YEAR	40
	PROJECTED NEW ORDERS	360
	TOTAL PROJECTED ACTIVE ACCOUNTS	5415
	TOTAL PROJECTED ACTIVE FTTH MEMBERS	5157
	PROJECTED TAKE RATE	62%
	FULL ACTUAL TAKE RATE	57.91%
	FTTH ACTUAL TAKE RATE	56.62%

➤ SERVICE INSTALLATIONS TO DATE:

- 5028 ACTIVE SUBSCRIBERS AS OF 3/25/26.

➤ RUN RATE

- NEW ORDERS WEEKLY AVERAGE ROSE TO 9 OVER THE PAST MONTH. AVERAGE WEEKLY INSTALLS ROSE SLIGHTLY TO 7 PER WEEK, FOLLOWING LAST MONTH'S INCREASE IN NEW ORDERS.

FTTH STATUS REPORT



RING TRAFFIC APPROACHING 10 GIG (OUR MAX CAPABILITY) AT PEAK TIMES- AS HIGH AS 8.2 Gbps

DAC CABLES TO SHIP TO US 5/1/26



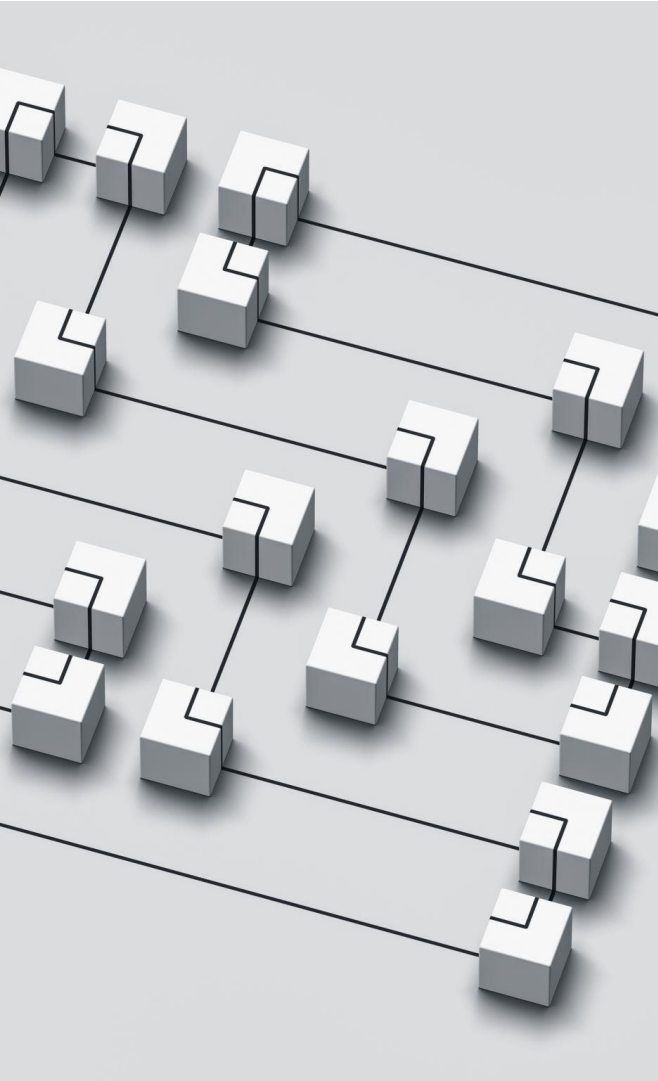
TANTALUS COLLECTOR

NEED TO WORK WITH OPERATIONS TO INSTALL HARDENED ONT (MODEM) IN FIELD.



NEW GROWTH STAGNATED OVER THE PAST MONTH

18 ACCOUNTS LOST OVER THE LAST MONTH – 6 WENT TO ANOTHER PROVIDER – 10 MOVED AND 2 WOULD NOT PROVIDE A REASON.



P2P STATUS REPORT

- P2P NETWORK UPDATE.
 - SITE SURVEY'S FOR INVENTORY AUDIT OF i-NET EQUIPMENT STILL NEEDED.
- STORM DAMAGE REPAIRS COMPLETED
 - STROH CELL TOWER
 - 10585 W CR 100 S
- NEW SERVICE INQUIRIES / SIGN UPS
 - TRITON METALS HAMILTON – i-NET
 - QUOTE ACCEPTED – MOVING FORWARD
 - CAMERON PHARMACY (OLD RUBY TUESDAY'S)
 - QUOTE TO BE SUBMITTED

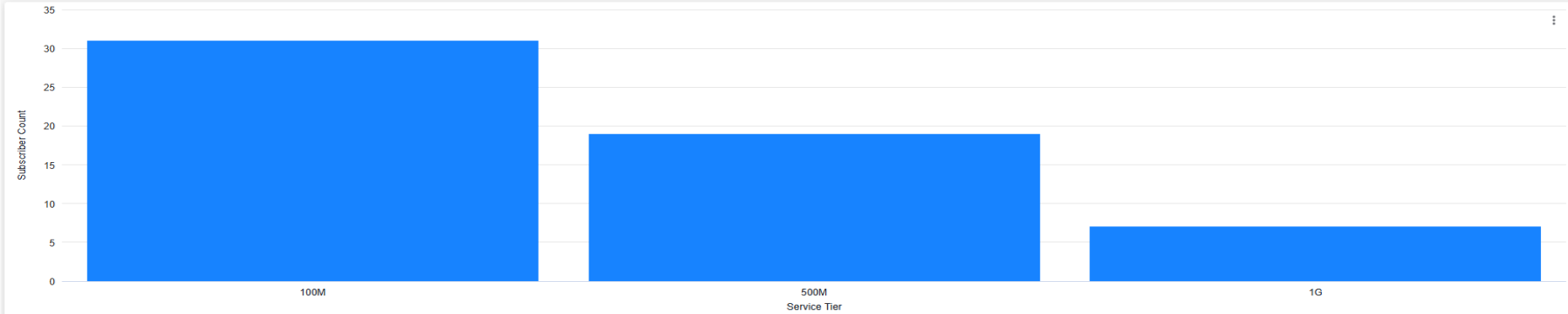
SUBSCRIBER STATISTICS

NEW SUBSCRIBER COUNT JUST OUTPACED DISCONNECTIONS / MOVES

New Subscribers

Past 30 days × Group By: Service Tier ▾

Clear All 📊 ↗



Summary Subscriber Details

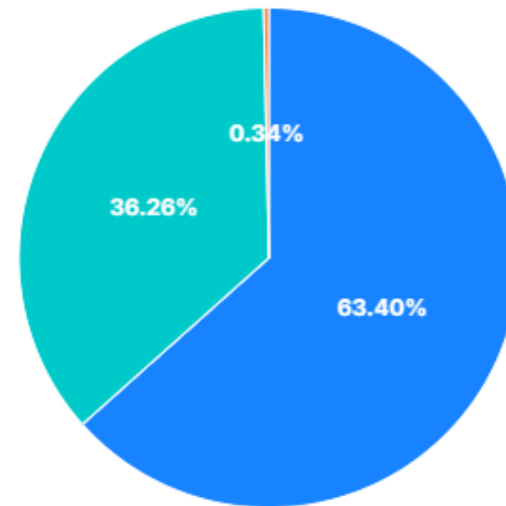
Service Tier	Subscriber Count
1 100M	31
2 500M	19
3 1G	7

STATISTICS CONT'D

• IN THE LAST MONTH WE HAVE BLOCKED 88,349 WEB THREATS AND 50,525 INTRUSIONS AND 474 VIRUSES FOR OUR MEMBERS.

Blocked Threats

From ProtectIQ



CALL CENTER STATISTICS

NRTC CALL CENTERS HANDLE BOTH
OVERFLOW MEMBER SERVICE CALLS
AS WELL AS TECH SUPPORT CALLS

CALLS REFERRED BACK TO US DURING BUS. HOURS	45
CHECKING ON AN EXISTING TICKET	10
ESCALATED TO BUSINESS OFFICE	57
AFTER HOURS ESCALATED TO DAVE	5
CALL CENTER RESOLVED	60
DISCONNECTED BEFORE ANSWERED	6
OUTAGE RELATED SERVICE ORDERS	57



ELECTRIC • BROADBAND

REGULAR BOARD OF DIRECTORS MEETING

STEBEN COUNTY REMC

AGENDA

March 30th, 2026 at 6:00pm

Rate Design Discussion

Cost of Service Study

Forecasted Proposed Revenue Requirements

The image shows a financial document with several components: a pie chart in the center, a line graph on the left, a calculator in the top left, a pen in the bottom left, and a stack of US dollar bills in the top right. The document is titled "Cost of Service Study" and "Forecasted Proposed Revenue Requirements".

125,058	154,568	95,054	124,500
125,487	56,845	97,511	125,000
124,000	110,000	99,011	154,000
105,450	150,000	99,216	95,000
86,502	35,000	101,090	154,200
	83,000	101,684	110,000
	45,000	101,962	89,000
		102,747	50,000
			68,700
			123,000

CFC Proposal- Rate Neutral with current Tracker rolled into service fee/rates

RATE SCHEDULES	EXISTING			PROPOSAL 1		PROPOSAL 2		
	BILLING UNITS	RATES	REVENUE	RATES	REVENUE	RATES	REVENUE	
Uniform Single Phase	Total							
Facilities Charge	95,100	\$19.00 /mo.	\$1,806,900	\$19.00 /mo.	\$1,806,900	\$25.00 /mo.	\$2,377,500	
Energy Charge								
First 250 kWh	1,739,059	\$0.099 /kWh	\$172,167	\$0.12426 /kWh	\$216,088	\$0.11657 /kWh	\$202,722	
Next 750 kWh	28,552,364	\$0.09100 /kWh	\$2,598,265	\$0.11421 /kWh	\$3,261,097	\$0.10715 /kWh	\$3,059,383	
Over 1000 kwh	55,173,825	\$0.08300 /kWh	\$4,579,427	\$0.10417 /kWh	\$5,747,665	\$0.09773 /kWh	\$5,392,145	
Total Base Rates			\$9,156,759		\$11,031,750		\$11,031,750	
PCA Revenue	81,626,637	\$0.021329 /kWh	\$1,874,990					
Total Revenue per Books			\$11,031,750					

**This model supports \$0 revenue increases- Rate Neutral

Proposed 2027-2029 Revenue Increase

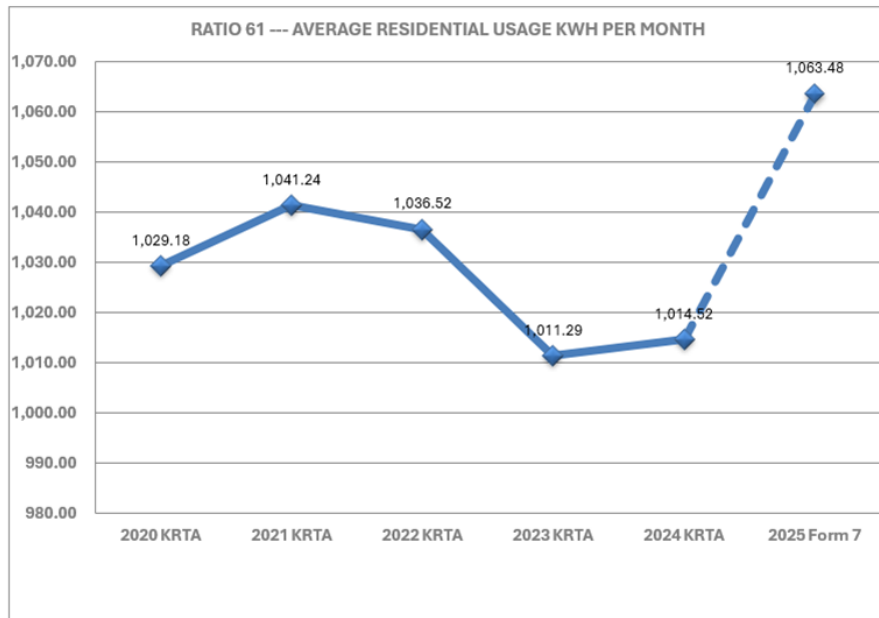
2027 Estimated Revenue Increase

Wages and Benefits	200,000		
		Total \$	200,000.00
CWP			
8-9 Miles of Lines Rebuilds	750,000		
Regulator change outs	54,000		
TS Tie Point	120,000		
Miscellaneous Projects	225,000		
		Total \$	1,149,000.00
Meter Upgrades	1500 meters		
	\$285 each		
		Totals \$	427,000.00
Fleet	130,000		
		\$	130,000.00
		Totals	\$ 1,906,000.00
	Cash	Loan	
		62%	38%
	\$ 1,181,720.00	\$ 724,280.00	

***Estimate range in the \$900,000 – \$1,200,000 for 2027-2029

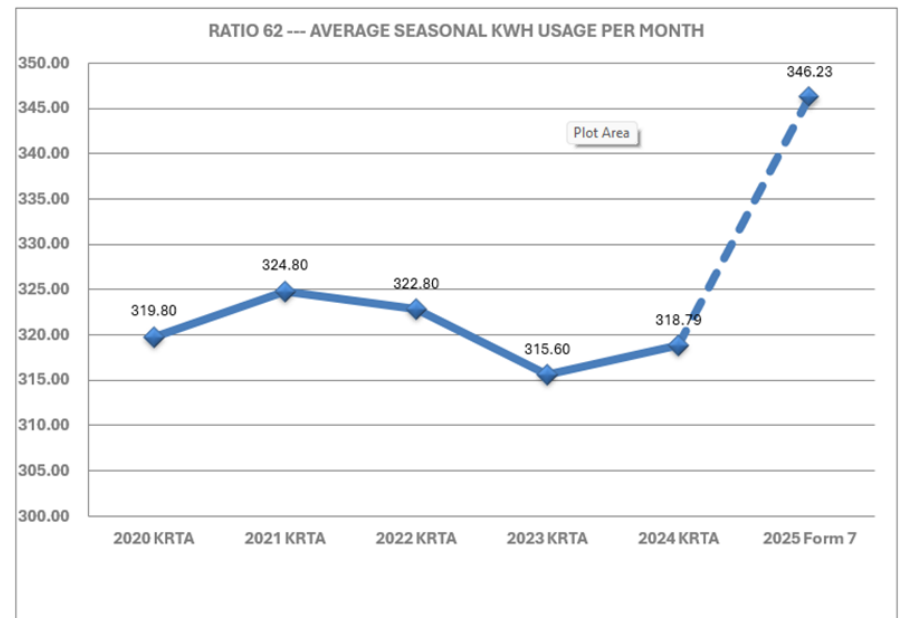
2025 Average Kwh for Residential & Seasonal Rates

RATIO 61 --- AVERAGE RESIDENTIAL USAGE KWH PER MONTH



2025 Average Residential= 1063 KWH

RATIO 62 --- AVERAGE SEASONAL KWH USAGE PER MONTH



2025 Average Seasonal= 346 KWH

Rate Scenario 1- Two Tier Residential Rate Revenue Neutral

RATE SCHEDULES	EXISTING	PROPOSED	PROPOSED REVENUE	REVENUE
	BILLING UNITS	RATES		INCREASE
Uniform Single Phase (Rate Schedule X-3)				
Facilities Charge	95,100	\$19.00 /mo.	\$1,806,900	
Energy Charge				
First 1000 kWh	30,291,423	\$0.11301 /kWh	\$3,423,317	
Over 1000 kWh	55,173,825	\$0.10515 /kWh	\$5,801,533	
Total Base Rates			\$11,031,750	\$0

Rate Scenario 2- Two Tier Residential Rate- Revenue Rate/ Tracker Rate into Kwh/ Facilities Charge \$19

RATE SCHEDULES	EXISTING BILLING UNITS	PROPOSED RATES	PROPOSED REVENUE	REVENUE INCREASE
<u>Uniform Single Phase (Rate Schedule X-3)</u>		Total		
Facilities Charge	95,100	\$19.00 /mo.	\$1,806,900	
Energy Charge				
First 1000 kWh	30,291,423	\$0.12426 /kWh	\$3,764,012	
Over 1000 kWh	55,173,825	\$0.11421 /kWh	\$6,301,403	
Total Base Rates			\$11,872,315	\$840,565
<u>Seasonal Residential Service (Rate Schedule S-1)</u>				
Facilities Charge	24,913	\$19.00 /mo.	\$473,347	
Energy Charge				
First 750 kWh	5,861,424	\$0.12426 /kWh	\$728,341	
Over 750 kWh	3,365,276	\$0.11421 /kWh	\$384,348	
Total Base Rates			\$1,586,036	\$74,585
				\$915,150

Rate Scenario 3- Two Tier Residential Rate- Revenue Rate/ Tracker Rate into Kwh/ Facilities Charge \$21

RATE SCHEDULES	EXISTING	PROPOSED	PROPOSED	REVENUE
	BILLING UNITS	RATES		REVENUE
Uniform Single Phase (Rate Schedule X-3)		Total		
Facilities Charge	95,100	\$21.00 /mo.	\$1,997,100	
Energy Charge				
First 1000 kWh	30,291,423	\$0.12426 /kWh	\$3,764,012	
Over 1000 kWh	55,173,825	\$0.11421 /kWh	\$6,301,403	
Total Base Rates			\$12,062,515	\$1,030,765
Seasonal Residential Service (Rate Schedule S-1)				
Facilities Charge	24,913	\$21.00 /mo.	\$523,173	
Energy Charge				
First 750 kWh	5,861,424	\$0.12426 /kWh	\$728,341	
Over 750 kWh	3,365,276	\$0.11421 /kWh	\$384,348	
Total Base Rates			\$1,635,862	\$124,411
				\$1,155,176

Rate Scenario 4- Original Three Tier Residential Rate- Revenue Rate/ Tracker Rate into Kwh/ Facilities Charge \$25

RATE SCHEDULES	EXISTING BILLING UNITS	PROPOSED RATES	PROPOSED REVENUE	REVENUE INCREASE
<u>Uniform Single Phase (Rate Schedule X-3)</u>		Total		
Facilities Charge	95,100	\$25.00 /mo.	\$2,377,500	
Energy Charge				
First 250 kWh	1,739,059	\$0.12586 /kWh	\$218,878	
Next 750 kWh	28,552,364	\$0.11569 /kWh	\$3,303,223	
Over 1000 kwh	55,173,825	\$0.10552	\$5,821,887	
Total Base Rates			\$11,721,488	\$689,738
<u>Seasonal Residential Service (Rate Schedule S-1)</u>				
Facilities Charge	24,913	\$25.00 /mo.	\$622,825	
Energy Charge				
First 250 kWh	1,208,622	\$0.12586 /kWh	\$152,117	
Next 750 kWh	4,652,802	\$0.11569 /kWh	\$538,283	
Over 1000 kwh	3,365,276	\$0.10552	\$355,101	
Total Base Rates			\$1,668,325	\$156,875
				\$846,613

Rate Scenario 5- Original Three Tier Residential

Rate- Revenue Rate/ Tracker Rate into kwh/ Facilities Charge \$23

RATE SCHEDULES	EXISTING	PROPOSED	PROPOSED	REVENUE
	BILLING UNITS	RATES		REVENUE
Uniform Single Phase (Rate Schedule X-3)		Total		
Facilities Charge	95,100	\$23.00 /mo.	\$2,187,300	
Energy Charge				
First 250 kWh	1,739,059	\$0.12586 /kWh	\$218,878	
Next 750 kWh	28,552,364	\$0.11569 /kWh	\$3,303,223	
Over 1000 kwh	55,173,825	\$0.10552	\$5,821,887	
Total Base Rates			\$11,531,288	\$499,538
Seasonal Residential Service (Rate Schedule S-1)				
Facilities Charge	24,913	\$23.00 /mo.	\$572,999	
Energy Charge				
First 250 kWh	1,208,622	\$0.12586 /kWh	\$152,117	
Next 750 kWh	4,652,802	\$0.11569 /kWh	\$538,283	
Over 1000 kwh	3,365,276	\$0.10552	\$355,101	
Total Base Rates			\$1,618,499	\$107,049
				\$606,587

LP-4 Rates

Rate Scenario 6- LP-4 rate with a standard demand charge and tracker neutral in the kwh

Electric General Power Service (Rate Schedule LP-4)

Facilities Charge	144	\$500.00	/mo.	\$72,000	
Demand Charge					
Per Max kW	157,335	\$12.19	/kW	\$1,917,228	
Energy Charge	59,808,240	\$0.07710	/kW h	<u>\$4,611,271</u>	
Total Base Rates				\$6,600,499	\$0



REGULAR BOARD OF DIRECTORS MEETING

STEUBEN COUNTY REMC

AGENDA

March 30th, 2026 at 6:00pm

Strategic Planning Discussion

Strategic Planning Session

The Facilitator Options:

- **CFC**- Typically they are booked 8-10 months in advance, but they do have some available dates in July and August. This is a first come, first served bases. So, these dates may not be available if we choice CFC. Also, we do not know who CFC will have facilitating our session because Brian Stagen is retiring soon.
- **IEC**- Michael Craciunoiu VP of Education and Development would be the facilitator and would also have availability in July for our planning session. IEC would charge an estimated cost of \$3600 for the session.
- **Jennifer Rufatto** from Tipmont. Jennifer has previously facilitated one of our strategic planning sessions in the past when she was employed by IEC. She has a long history of working with Indiana REMC's and has experience with cooperative broadband through Tipmont. She would also have availability in July for our planning session. \$1500 plus travel.
- ** A decision needs to be made for the facilitator and time.



ELECTRIC • BROADBAND

REGULAR BOARD OF DIRECTORS MEETING

STEUBEN COUNTY REMC

AGENDA

March 30th, 2026 at 6:00pm

Attorney Search

Dustin Glick- Eberhard, Weimer, & Glick Angola & LaGrange, IN

Areas of Practice-

- Personal Injury Law
- Civil Trial Litigation
- Mediation
- Local Government
- Business / Contracts / Real Estate

-Dustin Glick has been practicing for the pass 13 year in the LaGrange and Steuben Co area under Bill Ederhard. In his tenure he has accompanied attorney Bill Ederhard on several board responsibilities and duties. Dustin comes as a suggestion from Jim Burns, former REMC Board attorney.



Jonathan Cress

Cress Law Group Angola, IN

Areas of Practice-

- Personal Injury Law
- Civil Trial Litigation
- Debtor/Creditor Law - Commercial Bankruptcy
- Family Law
- Estate and Financial Planning
- Business / Contracts / Real Estate



Nick Fee- State of Indiana Bar -Soon to be relocating to Steuben County

Nick Fee is currently serving as the William County , OH probate court Magistrate in which his commitment expires in May 2026. Nick and his family plan on moving to the Stueben Co area. Where his intentions are to practice public law. He has recently been accepted and licensed by the State of Indiana to practice law. Nick comes as an up-and-coming young attorney with high regards from his peers and Jim McEntarfer.





REGULAR BOARD OF DIRECTORS MEETING

STEUBEN COUNTY REMC

AGENDA

March 30th, 2026 at 6:00pm

Board Election & Annual Meeting Update

2026 Annual Meeting Timeline

November (2025) – March (2026)

Indiana Connection Magazine announces petitions and due date

March

13 Friday Petitions Due (90 Days prior)

April

Indiana Connection Magazine May Issue Content Due

13 Monday Mail Listing (60 days prior)

May

Indiana Connection Magazine Official Notice (within the 10-60 day timeframe)

8 Friday *Video- #0- pre-voting - Communication Team*
Email from REMC introducing SBS

11 Monday **VOTING OPENS**
Email from SBS with instructions and links

15 Friday *Video-#1- Welcome/ What to Expect - Gary*

22 Friday *Video-#2- Presidential and Secretarial Reports – Gus & Gary*

29 Friday *Video-#3- Voting Process – New Attorney*

June

5 Friday *Video-#4- CEO Report – Steven*
Reminder email from REMC with current and previous videos

10 Wednesday Reminder email from SBS

11 Thursday **VOTING ENDS**

13 Saturday **ANNUAL MEETING**
Video-#5 Election Results – New Attorney



Steuben County REMC

ELECTRIC • BROADBAND

REGULAR BOARD OF DIRECTORS MEETING

STEBEN COUNTY REMC

AGENDA

March 30th, 2026 at 6:00pm

ACSI Score Preview

A photograph of a man in an orange striped shirt and a young child in a teal shirt looking into an open front-loading washing machine. The man is kneeling and pointing towards the machine, while the child stands next to him, also looking inside. The scene is set in a brightly lit laundry room.

**A Confidential Satisfaction and Saturation
Survey Conducted on Behalf of**

**Steuben County REMC
2026**



RUS	Cooperative Name	ACSI	Retention	N	95% Confidence Interval		
					c.i.	lower	upper
IN053	Steuben County REMC	87	82%	250	2.4	84.60	89.40

You are receiving this score as part of your Touchstone Energy® membership. Touchstone Energy is a national network of electric cooperatives across 46 states that provides research, communication resources, and employee training programs to help its member cooperatives better engage and serve their members.

PLEASE NOTE THE FOLLOWING IF YOU INTEND TO PUBLISH YOUR ACSI® SCORE:

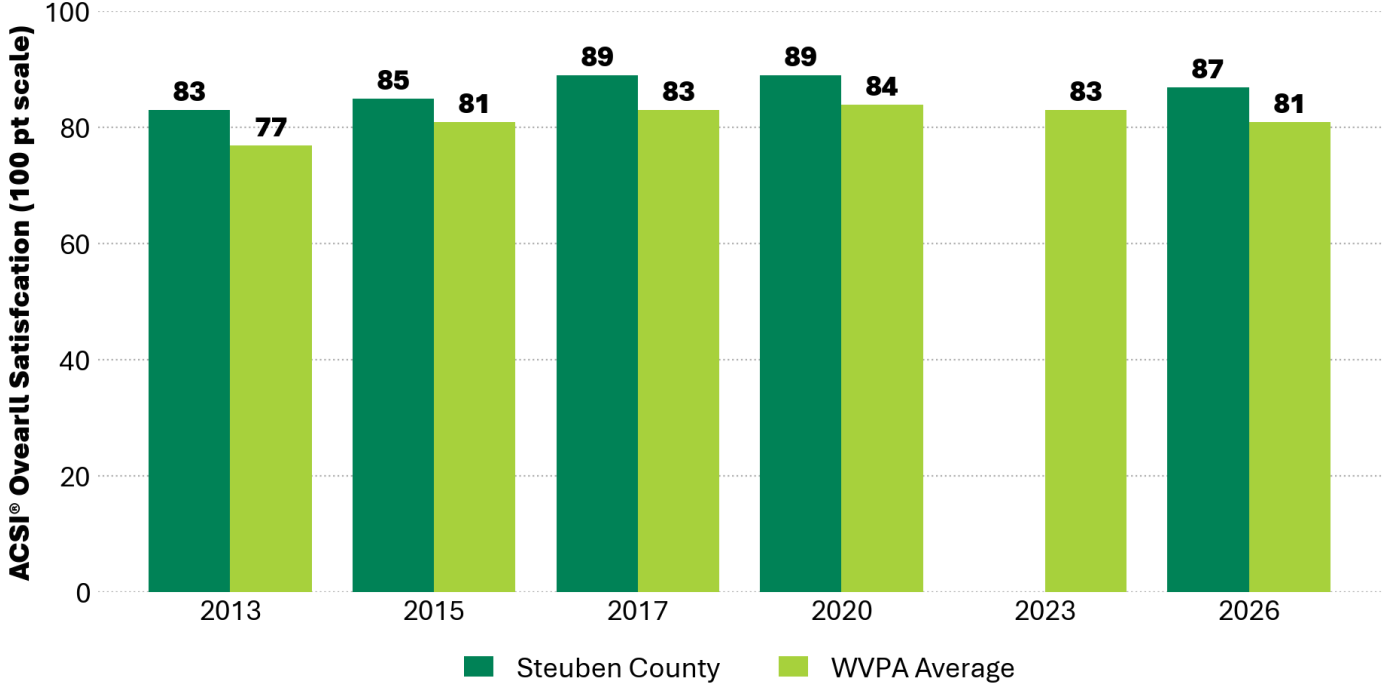
If you would like to promote your American Customer Satisfaction Index (ACSI®) score to your membership, use the language from the document “Touchstone Energy Boilerplate 2025 – Energy Utilities” or “Touchstone Energy Boilerplate – Internet Service Providers” that you received along with this scorecard. Please also consult the document “ACSI Name and Logo Usage Guidelines.”

You may not use any language that differs from the pre-approved boilerplate templates. For any questions about the publication of ACSI-related material (e.g., newsletter, social media), please contact Angelika Hoelger at Angelika.Hoelger@nreca.coop at Touchstone Energy Cooperatives.

If any materials using the ACSI name, logo, or data are used that do not comply with the language of the pre-approved boilerplate templates and the ACSI Name and Logo Usage Guidelines, your cooperative’s ACSI programming may be suspended, including the analysis and delivery of ACSI data.

Please allow 7 business days for the review and approval process of submitted materials.

ACSI® Scores by Year



'WVPA Average' is for internal use only and should not be published.



ACSI scores are a free benefit through your membership in Touchstone Energy®. Data collection and reporting are provided by Cooperative Insights.

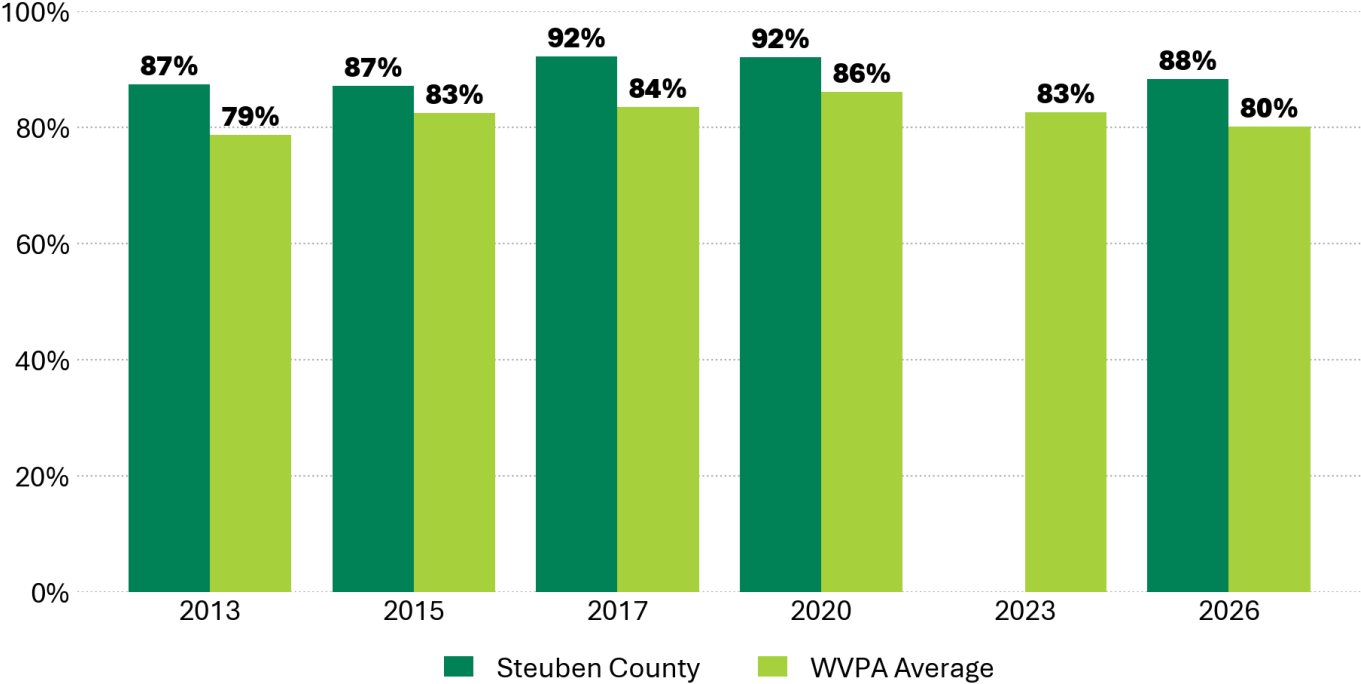
ACSI® Component Results - Steuben County

An ACSI score is derived from four survey questions that measure specific facets of customer satisfaction on a scale from 1-10. Results of each question are shown below. See Appendix for additional information about Confidence Interval.

Question	Average Satisfaction Rating	Confidence Interval: 95% Lower Bound	Confidence Interval: 95% Upper Bound
How satisfied are you with your electric cooperative?	9.11	8.91	9.31
To what extent has your electric cooperative fallen short of or exceeded your expectations?	8.60	8.36	8.83
How well do you think your electric cooperative compares to an ideal utility company?	8.77	8.52	9.01
Imagine that you could choose from among more than one utility company. How likely are you to choose your electric cooperative?	8.96	8.71	9.22

ACSI® Component Results - Overall Satisfaction

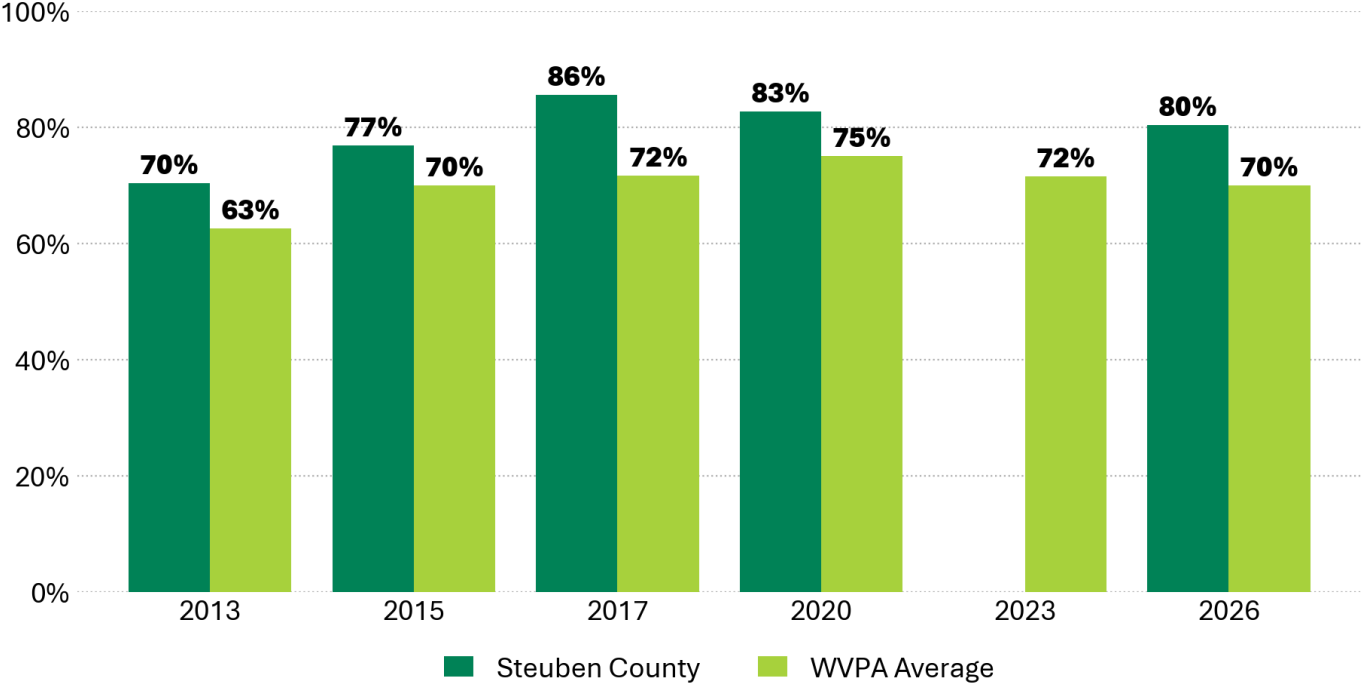
(8s, 9s and 10s combined)



How satisfied are you with your electric cooperative?
Responses provided on a 10-point scale, with 1=very dissatisfied and 10=very satisfied.

ACSI® Component Results - Meeting Expectations

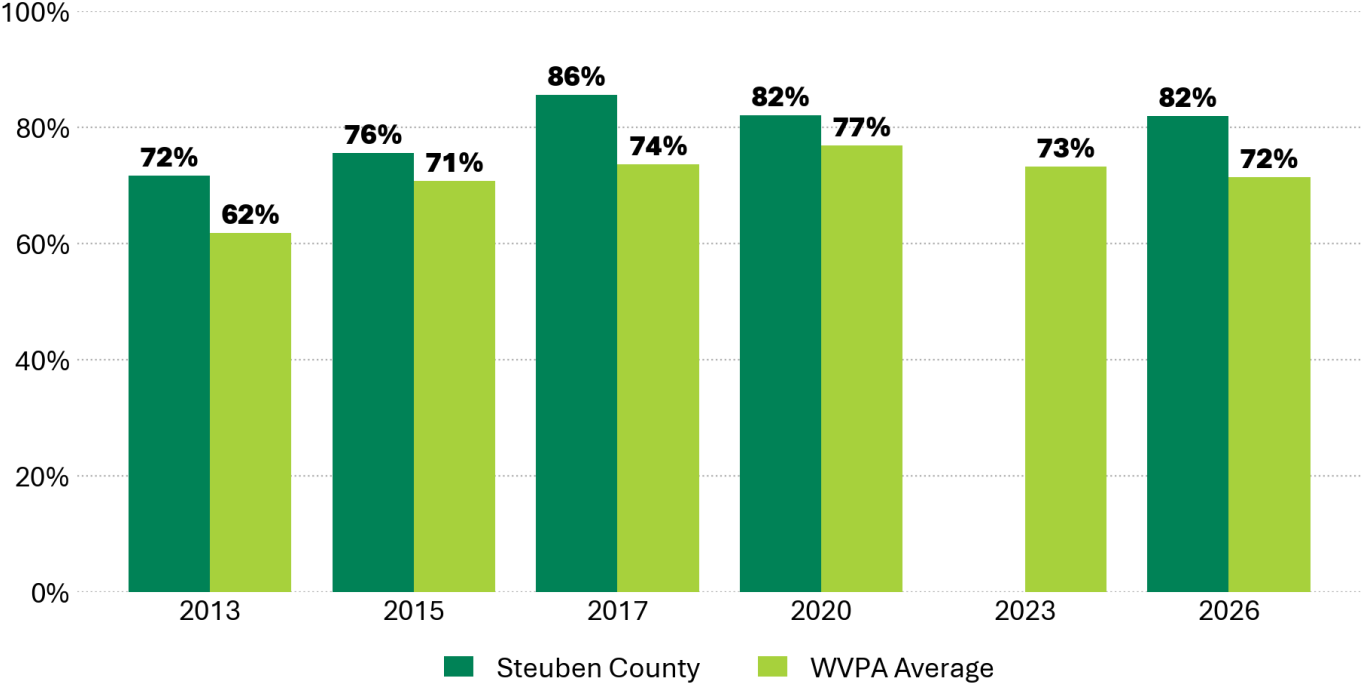
(8s, 9s and 10s combined)



To what extent has your electric cooperative fallen short of or exceeded your expectations?
 Responses provided on a 10-point scale, with 1=falls short of your expectations and 10=exceeds your expectations.

ACSI® Component Results - Ideal Utility

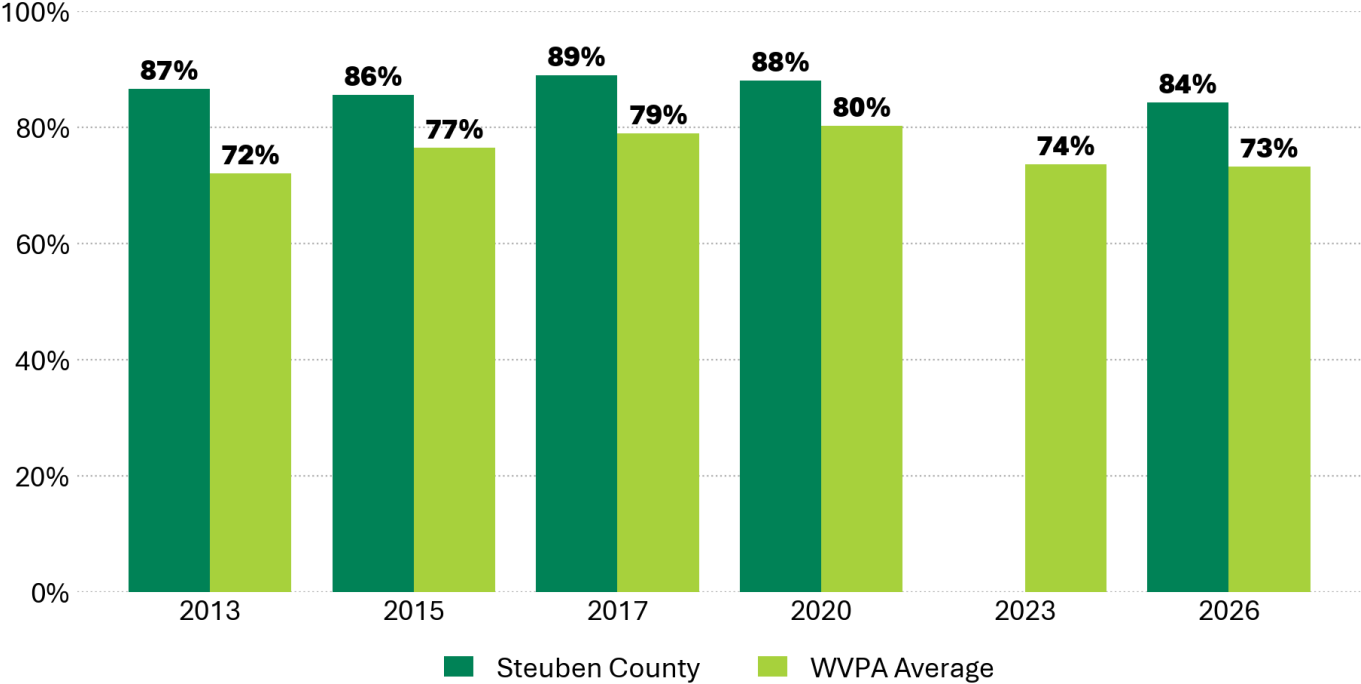
(8s, 9s and 10s combined)



How well do you think your electric cooperative compares to an ideal utility company?
Responses provided on a 10-point scale, with 1=not very close to the ideal and 10=very close to the ideal.

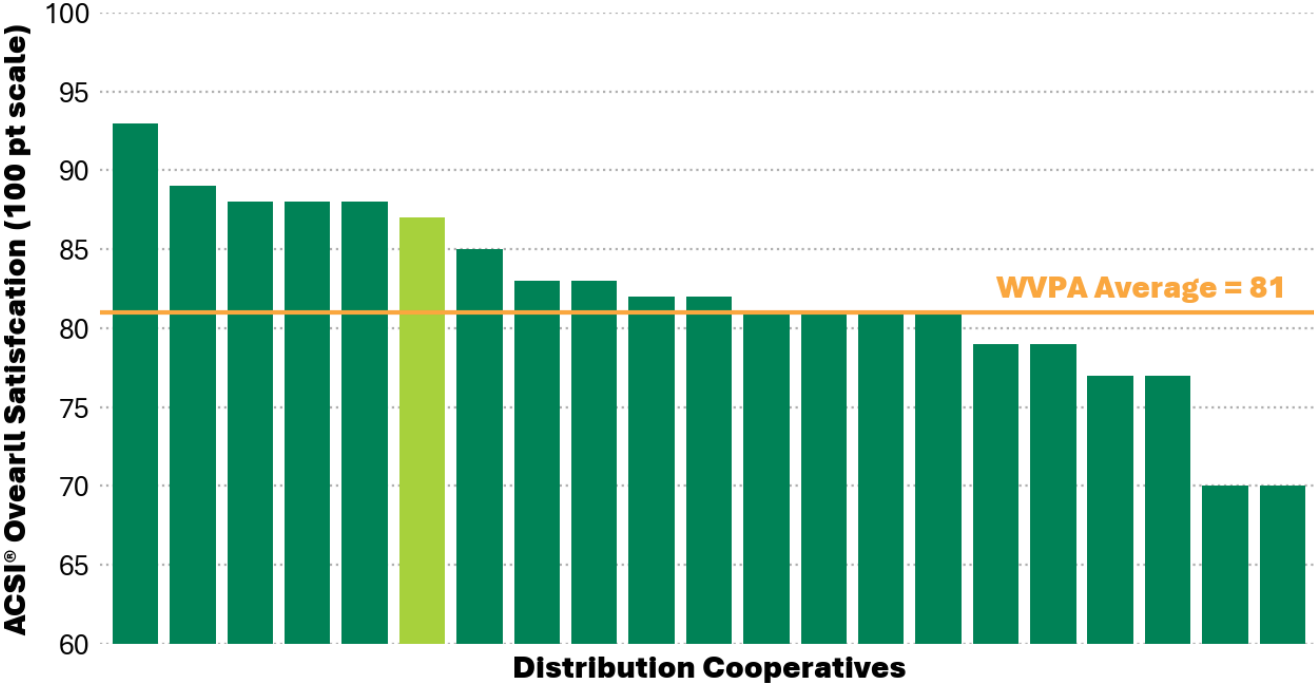
ACSI® Component Results - Likelihood to Choose Again

(8s, 9s and 10s combined)



Imagine that you could choose from among more than one utility company. How likely are you to choose your electric cooperative? Responses provided on a 10-point scale, with 1=very unlikely and 10=very likely.

ACSI® Scores Across Participating Distribution Cooperatives



Steuben County is highlighted in light green.
 'WVPA Average' is for internal use only and should not be published.

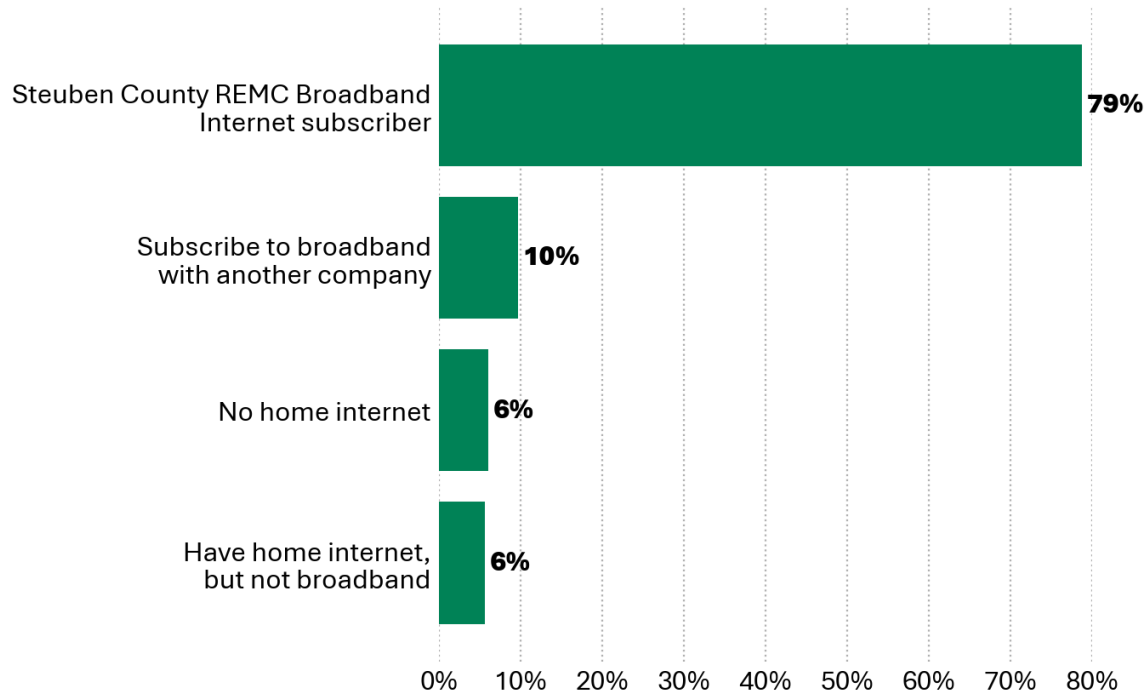


ACSI scores are a free benefit through your membership in Touchstone Energy®. Data collection and reporting are provided by Cooperative Insights.

8 Custom Questions

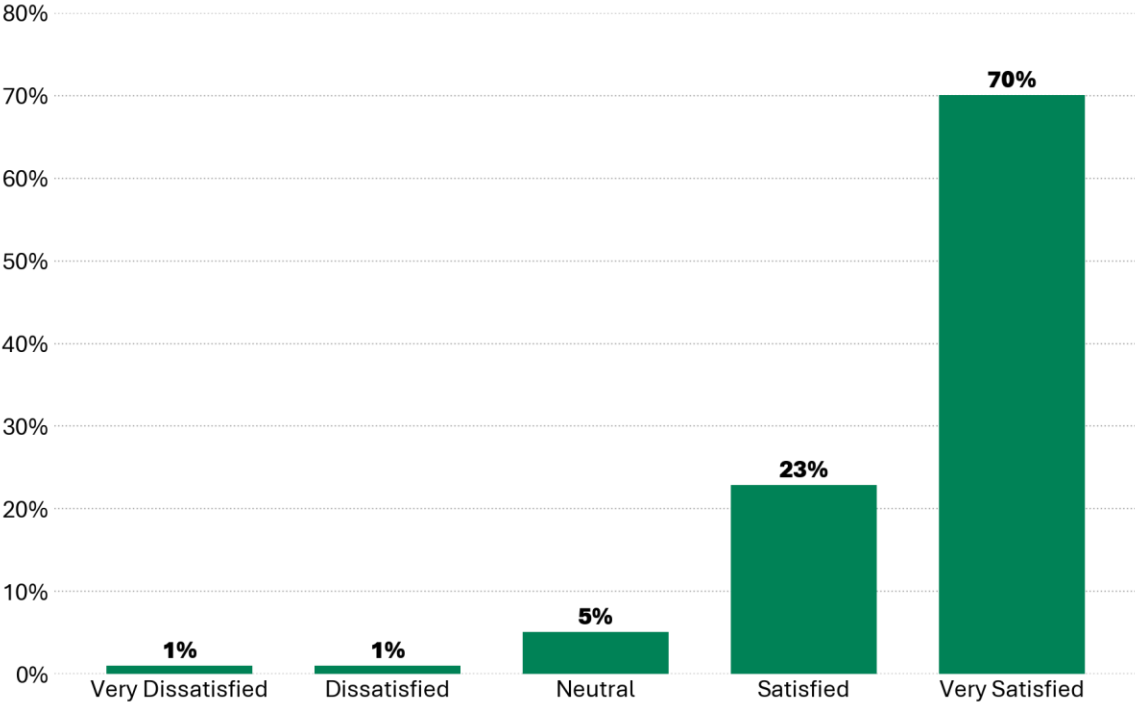


Current Internet Situation



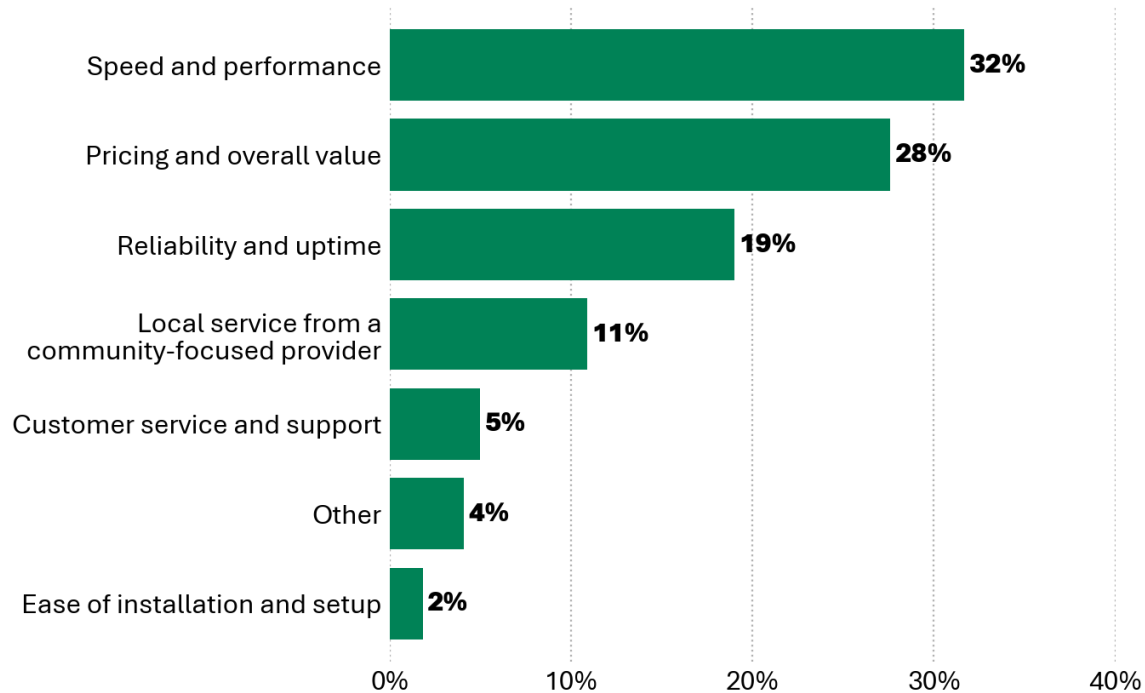
Which of the following best describes your current home internet situation?

Satisfaction with Steuben Broadband Internet



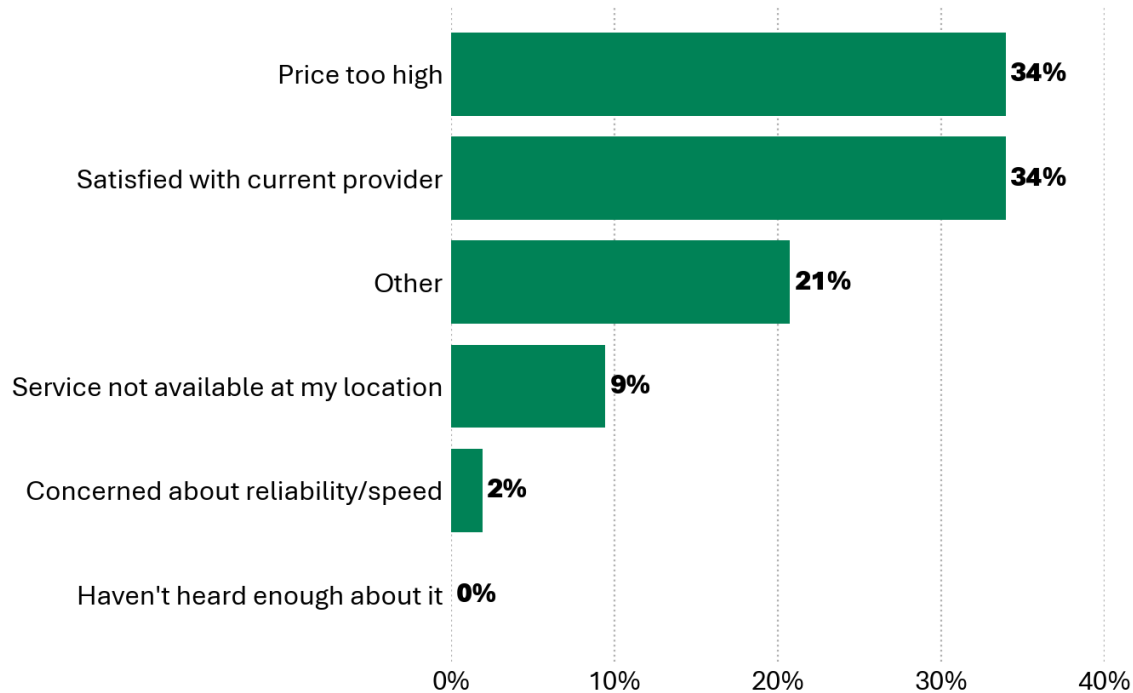
Members subscribed to Steuben County REMC Broadband Internet were asked: Overall, how satisfied are you with your broadband service from Steuben County REMC?

Most Valued Aspect of Broadband Service



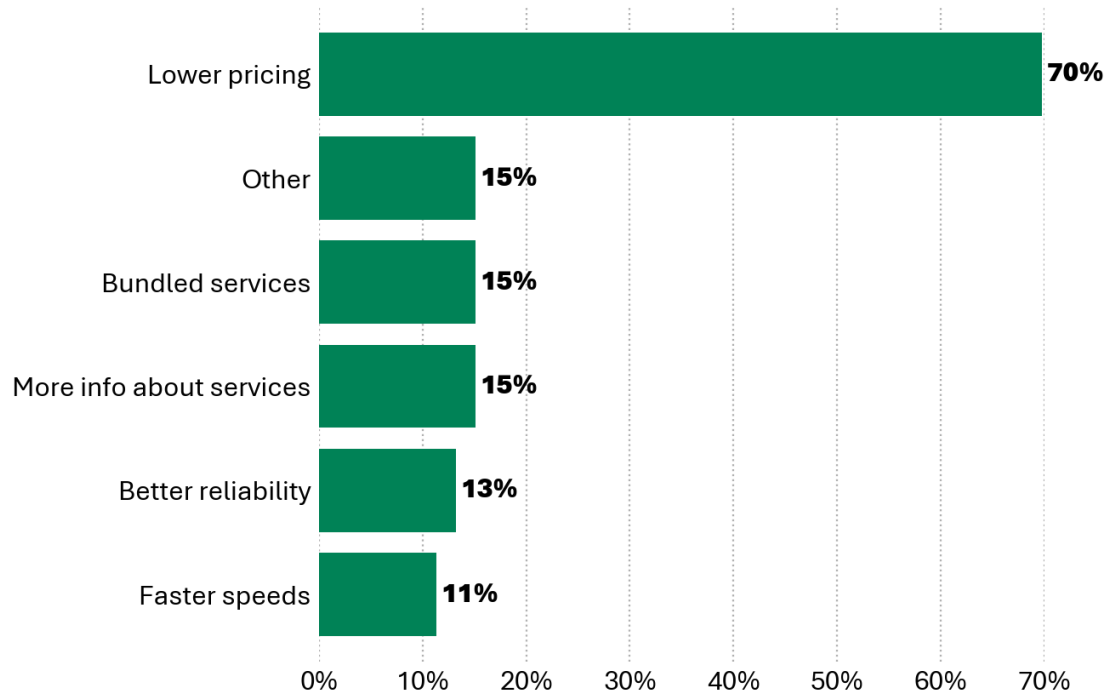
Members who subscribed to broadband service were asked: Which aspect of your broadband service do you value most?

Primary Reason for Not Subscribing to Steuben Broadband Internet



Members who didn't subscribe to broadband service were asked: What is the primary reason you have not subscribed to Steuben County REMC Broadband Internet?

Motivation to Subscribe to Steuben County REMC Broadband Internet



Members who didn't subscribe to broadband service were asked: What would make you more likely to consider subscribing in the future?
Please select all that apply.



Steuben County REMC

ELECTRIC • BROADBAND

REGULAR BOARD OF DIRECTORS MEETING

STEUBEN COUNTY REMC

AGENDA

March 30th, 2026 at 6:00pm

Corporate Council Report



REGULAR BOARD OF DIRECTORS MEETING

STEUBEN COUNTY REMC

AGENDA

March 30th, 2026 at 6:00pm

Other Business



Legislative
Conference



April 26-29, 2026 | Washington, D.C.

Attending- Steven Kahle
Marc Nelson



FORUM 2026

June 15-17 | Chula Vista, CA

Attending- Carter Snider
Steven Kahle



April 2026

Schedule of Events

- **Apr. 1-** Wabash Valley Power will be holding their regular monthly Board Meeting in Indianapolis IN beginning at 9:00 am.
- **April 3-** Good Friday– Office Closed
- **April 13th-** Lineman Appreciation Day
- **Apr. 15-** The Indiana Statewide regular Board of Directors meeting is scheduled to begin at 10:00 a.m.
- **Apr. 20-** The REMC April Board Mtg. will begin with dinner at 5:30 p.m. and the meeting beginning at 6:00 p.m.
- **Apr. 26-29-** NRECA’s Annual Legislative Conference will be held in Washington D.C. Marc and Steven is planning to attend.

Sun	Mon	Tue	Wed	Thu	Fri	Sat
			1 Wabash Board Meeting	2	3 Good Friday Office Closed	4
5 Easter	6	7	8	9	10	11
12	13 Lineman Apprecia- tion Day	14	15 IEC Board Meeting.	16	17	18
19	20 REMC Board Meeting	21	22	23	24	25
26	NRECA Legislative Conference Washington D.C. 26th-29th			29	30	