

Steuben County REMC

Agenda

Steuben County REMC
Regular Board of Directors Meeting
November 24, 2025

1. Call to Order
2. Roll Call
3. General Consent Items
 - a. Agenda
 - b. Minutes of November 3, 2025 Board Meeting
 - c. Special Meeting Minutes of November 18, 2025
 - d. Bills
 - e. Director Expenses
 - f. New Hookups
 - g. New Memberships
 - h. IUPPS Update
4. Informative Reports
 - a. CEO Financial Report
 - b. Re-Comm Update
 - c. Operation Round Up
 - d. Safety Meeting
 - e. WVPA Board Meeting
 - f. Member Services Report
 - g. Cyber Security
 - h. Broadband Update
 - i. IEC Legislative Dinner Update
 - j. Preliminary Budget Review
 - k. 2023 Write-Off's
5. Executive Session
 - a. CEO Search
6. Decisions Needed
 - a.
7. Corporate Council Report
 - a.
8. Other Business
9. Calendar & Announcements
 - a. Next Regular Meeting December ???, 2025
10. Adjournment

Steuben County REMC

Monthly Operating Report

	Year to Date			Oct-25	This Month			
	Last year	This Year	Budget	Variance	Last Year	This Year	Budget	Variance
Operating Revenue	\$25,157,630	\$26,519,539	\$27,515,184	-\$995,645	\$2,155,322	\$2,582,377	\$2,658,594	-\$76,217
Kwh Sold	183,934,977	186,247,776	193,654,465	-7,406,689	16,853,830	16,769,444	19,007,104	-2,237,660
Cost of Purchased Power	\$15,569,787	\$15,236,928	\$15,740,656	-\$503,728	\$1,403,697	\$1,358,541	\$1,609,013	-\$250,472
Kwh Purchased	190,325,370	191,679,652	198,575,913	-6,896,261	17,683,646	17,364,576	20,095,758	-2,731,182
Distribution Expense - Operations	\$629,162	\$628,096	\$632,666	-\$4,570	\$57,269	\$65,459	\$57,171	\$8,288
Distribution Expense - Maintenance	\$1,123,481	\$1,148,602	\$1,354,977	-\$206,375	\$114,611	\$113,577	\$134,767	-\$21,190
Consumer Accounts Expense	\$385,506	\$386,784	\$440,095	-\$53,311	\$53,687	\$40,311	\$44,799	-\$4,488
Consumer Services & Info Exp.	\$117,668	\$118,333	\$188,309	-\$69,976	\$8,606	\$4,874	\$13,051	-\$8,177
Sales Expense	\$86,088	\$94,387	\$92,536	\$1,851	\$6,117	\$5,981	\$10,527	-\$4,546
Administrative & General Expense	\$2,496,274	\$2,472,294	\$2,793,724	-\$321,430	\$209,157	\$234,446	\$278,262	-\$43,816
Total Operation & Maintenance Exp.	\$20,407,966	\$20,085,424	\$21,242,963	-\$1,157,539	\$1,853,142	\$1,823,189	\$2,147,590	-\$324,401
Depreciation & Amortization Exp.	\$2,051,147	\$2,452,758	\$2,447,509	\$5,249	\$153,516	\$250,034	\$247,729	\$2,305
Tax Expense - Property	\$151,300	\$110,000	\$200,000	-\$90,000	\$10,000	\$11,000	\$20,000	-\$9,000
Tax Expense - Other	\$27	\$0	\$2,482	-\$2,482	\$0	\$0	\$0	\$0
Interest on Long Term Debt	\$1,486,247	\$1,928,745	\$1,928,746	-\$1	\$95,939	\$199,836	\$199,836	\$0
Interest Charged to Construction(credit)	\$0	\$0	\$0	\$0	\$0	\$0	\$0	\$0
Interest Expense Other	\$0	\$0	\$0	\$0	\$0	\$0	\$0	\$0
Other Deductions	\$0	\$0	\$0	\$0	\$0	\$0	\$0	\$0
Total Cost of Electric Service	\$24,096,687	\$24,576,927	\$25,821,700	-\$1,244,773	\$2,112,597	\$2,284,059	\$2,615,155	-\$331,096
Patronage Capital & Operating Margins	\$1,060,943	\$1,942,612	\$1,693,484	\$249,128	\$42,725	\$298,317	\$43,439	\$254,878
Non Operating Margins - Interest	\$18,264	\$18,160	\$18,500	-\$340	\$1,879	\$1,840	\$1,850	-\$10
Allowance for Funds Used During Const.	-\$350	\$0	\$0	\$0	\$0	\$0	\$0	\$0
Non Operating Margins - Other	\$2,010	\$3,397	\$0	\$3,397	\$74	\$234	\$0	\$234
Generation & Transmission Cap. Credits	\$0	\$0	\$0	\$0	\$0	\$0	\$0	\$0
Other Cap. Credits & Patronage Divid.	\$164,354	\$67,736	\$20,600	\$47,136	\$0	\$0	\$0	\$0
Extraordinary Items	\$0	\$0	\$0	\$0	\$0	\$0	\$0	\$0
Patronage Capital or Margins	\$1,245,220	\$2,031,905	\$1,732,584	\$299,321	\$44,678	\$300,391	\$45,289	\$255,102

	Steuben County REMC			
	Monthly Operating Report			
	Oct-25		This Month	
	Last year	This Year	Budget	Variance
Operating Revenue	\$2,155,322	\$2,582,377	\$2,658,594	-\$76,217
Kwh Sold	16,853,830	16,769,444	19,007,104	-2,237,660
Cost of Purchased Power	\$1,403,697	\$1,358,541	\$1,609,013	-\$250,472
Kwh Purchased	17,683,646	17,364,576	20,095,758	-2,731,182
Distribution Expense - Operations	\$57,269	\$65,459	\$57,171	\$8,288
Distribution Expense - Maintenance	\$114,611	\$113,577	\$134,767	-\$21,190
Consumer Accounts Expense	\$53,687	\$40,311	\$44,799	-\$4,488
Consumer Services & Info Exp.	\$8,606	\$4,874	\$13,051	-\$8,177
Sales Expense	\$6,117	\$5,981	\$10,527	-\$4,546
Administrative & General Expense	\$209,157	\$234,446	\$278,262	-\$43,816
Total Operation & Maintenance Exp.	\$1,853,142	\$1,823,189	\$2,147,590	-\$324,401
Depreciation & Amortization Exp.	\$153,516	\$250,034	\$247,729	\$2,305
Tax Expense - Property	\$10,000	\$11,000	\$20,000	-\$9,000
Tax Expense - Other	\$0	\$0	\$0	\$0
Interest on Long Term Debt	\$95,939	\$199,836	\$199,836	\$0
Interest Charged to Construction(credit)	\$0	\$0	\$0	\$0
Interest Expense Other	\$0	\$0	\$0	\$0
Other Deductions	\$0	\$0	\$0	\$0
Total Cost of Electric Service	\$2,112,597	\$2,284,059	\$2,615,155	-\$331,096
Patronage Capital & Operating Margins	\$42,725	\$298,317	\$43,439	\$254,878
Non Operating Margins - Interest	\$1,879	\$1,840	\$1,850	-\$10
Allowance for Funds Used During Const.	\$0	\$0	\$0	\$0
Non Operating Margins - Other	\$74	\$234	\$0	\$234
Generation & Transmission Cap. Credits	\$0	\$0	\$0	\$0
Other Cap. Credits & Patronage Divid.	\$0	\$0	\$0	\$0
Extraordinary Items	\$0	\$0	\$0	\$0
Patronage Capital or Margins	\$44,678	\$300,391	\$45,289	\$255,102

Steuben County REMC

Monthly Operating Report

Oct-25

Year to Date

Variance

Last Year

This Year

Budget

Variance

Operating Revenue	\$25,157,630	\$26,519,539	\$27,515,184	-\$995,645
Kwh Sold	183,934,977	186,247,776	193,654,465	-7,406,689
Cost of Purchased Power	\$15,569,787	\$15,236,928	\$15,740,656	-\$503,728
Kwh Purchased	190,325,370	191,679,652	198,575,913	-6,896,261
Distribution Expense - Operations	\$629,162	\$628,096	\$632,666	-\$4,570
Distribution Expense - Maintenance	\$1,123,481	\$1,148,602	\$1,354,977	-\$206,375
Consumer Accounts Expense	\$385,506	\$386,784	\$440,095	-\$53,311
Consumer Services & Info Exp.	\$117,668	\$118,333	\$188,309	-\$69,976
Sales Expense	\$86,088	\$94,387	\$92,536	\$1,851
Administrative & General Expense	\$2,496,274	\$2,472,294	\$2,793,724	-\$321,430
Total Operation & Maintenance Exp.	\$20,407,966	\$20,085,424	\$21,242,963	-\$1,157,539
Depreciation & Amortization Exp.	\$2,051,147	\$2,452,758	\$2,447,509	\$5,249
Tax Expense - Property	\$151,300	\$110,000	\$200,000	-\$90,000
Tax Expense - Other	\$27	\$0	\$2,482	-\$2,482
Interest on Long Term Debt	\$1,486,247	\$1,928,745	\$1,928,746	-\$1
Interest Charged to Construction(credit)	\$0	\$0	\$0	\$0
Interest Expense Other	\$0	\$0	\$0	\$0
Other Deductions	\$0	\$0	\$0	\$0
Total Cost of Electric Service	\$24,096,687	\$24,576,927	\$25,821,700	-\$1,244,773
Patronage Capital & Operating Margins	\$1,060,943	\$1,942,612	\$1,693,484	\$249,128
Non Operating Margins - Interest	\$18,264	\$18,160	\$18,500	-\$340
Allowance for Funds Used During Const.	-\$350	\$0	\$0	\$0
Non Operating Margins - Other	\$2,010	\$3,397	\$0	\$3,397
Generation & Transmission Cap. Credits	\$0	\$0	\$0	\$0
Other Cap. Credits & Patronage Divid.	\$164,354	\$67,736	\$20,600	\$47,136
Extraordinary Items	\$0	\$0	\$0	\$0
Patronage Capital or Margins	\$1,245,220	\$2,031,905	\$1,732,584	\$299,321

Steuben County REMC

Monthly Operating Report Fiber

	Year to Date			Oct-25	This Month			
	Last Year	This Year	Budget	Variance	Last Year	This Year	Budget	Variance
Operating Revenue	\$3,150,793	\$3,349,800	\$3,964,164	-\$614,364	\$220,438	\$382,276	\$418,081	-\$35,805
Distribution Expense - Operations	\$72,672	\$42,641	\$45,580	-\$2,939	\$7,919	\$4,953	\$4,558	\$395
Distribution Expense - Maintenance	\$177,320	\$189,665	\$132,341	\$57,324	\$16,987	\$16,271	\$13,573	\$2,698
Consumer Accounts Expense	\$16,586	-\$1,261	\$29,688	-\$30,949	\$20,095	\$0	\$3,070	-\$3,070
Consumer Services & Info Exp.	\$0	\$0	\$0	\$0	\$0	\$0	\$0	\$0
Sales Expense	\$0	\$6,055	\$0	\$6,055	\$0	\$0	\$0	\$0
Administrative & General Expense	\$478,142	\$533,877	\$662,972	-\$129,095	\$31,266	\$65,981	\$68,114	-\$2,133
Total Operation & Maintenance Exp.	\$744,719	\$770,977	\$870,581	-\$99,604	\$76,267	\$87,205	\$89,315	-\$2,110
Depreciation & Amortization Exp.	\$1,000,293	\$1,175,570	\$1,310,693	-\$135,123	\$53,422	\$132,867	\$131,698	\$1,169
Tax Expense - Property	\$60,000	\$0	\$100,000	-\$100,000	\$1,500	\$0	\$10,000	-\$10,000
Tax Expense - Other	\$0	\$0	\$0	\$0	\$0	\$0	\$0	\$0
Interest on Long Term Debt	\$1,042,747	\$1,314,909	\$1,468,746	-\$153,837	\$57,439	\$153,836	\$153,836	\$0
Interest Charged to Construction(credit)	\$0	\$0	\$0	\$0	\$0	\$0	\$0	\$0
Interest Expense Other	\$0	\$0	\$0	\$0	\$0	\$0	\$0	\$0
Other Deductions	\$0	\$0	\$0	\$0	\$0	\$0	\$0	\$0
Total Cost of Electric Service	\$2,847,759	\$3,261,457	\$3,750,020	-\$488,563	\$188,628	\$373,908	\$384,849	-\$10,941
Patronage Capital & Operating Margins	\$303,034	\$88,344	\$214,144	-\$125,800	\$31,810	\$8,367	\$33,232	-\$24,865
Non Operating Margins - Interest	\$0	\$0	\$0	\$0	\$0	\$0	\$0	\$0
Allowance for Funds Used During Const.	\$0	\$0	\$0	\$0	\$0	\$0	\$0	\$0
Non Operating Margins - Other	\$0	\$0	\$0	\$0	\$0	\$0	\$0	\$0
Generation & Transmission Cap. Credits	\$0	\$0	\$0	\$0	\$0	\$0	\$0	\$0
Other Cap. Credits & Patronage Divid.	\$0	\$0	\$0	\$0	\$0	\$0	\$0	\$0
Extraordinary Items	\$0	\$0	\$0	\$0	\$0	\$0	\$0	\$0
Patronage Capital or Margins	\$303,034	\$88,344	\$214,144	-\$125,800	\$31,810	\$8,367	\$33,232	-\$24,865

	Steuben County REMC			
	Monthly Operating Report			
	Oct-25		This Month	
	Last Year	This Year	Budget	Variance
Operating Revenue	\$220,438	\$382,276	\$418,081	-\$35,805
Distribution Expense - Operations	\$7,919	\$4,953	\$4,558	\$395
Distribution Expense - Maintenance	\$16,987	\$16,271	\$13,573	\$2,698
Consumer Accounts Expense	\$20,095	\$0	\$3,070	-\$3,070
Consumer Services & Info Exp.	\$0	\$0	\$0	\$0
Sales Expense	\$0	\$0	\$0	\$0
Administrative & General Expense	\$31,266	\$65,981	\$68,114	-\$2,133
Total Operation & Maintenance Exp.	\$76,267	\$87,205	\$89,315	-\$2,110
Depreciation & Amortization Exp.	\$53,422	\$132,867	\$131,698	\$1,169
Tax Expense - Property	\$1,500	\$0	\$10,000	-\$10,000
Tax Expense - Other	\$0	\$0	\$0	\$0
Interest on Long Term Debt	\$57,439	\$153,836	\$153,836	\$0
Interest Charged to Construction(credit)	\$0	\$0	\$0	\$0
Interest Expense Other	\$0	\$0	\$0	\$0
Other Deductions	\$0	\$0	\$0	\$0
Total Cost of Electric Service	\$188,628	\$373,908	\$384,849	-\$10,941
Patronage Capital & Operating Margins	\$31,810	\$8,367	\$33,232	-\$24,865
Non Operating Margins - Interest	\$0	\$0	\$0	\$0
Allowance for Funds Used During Const.	\$0	\$0	\$0	\$0
Non Operating Margins - Other	\$0	\$0	\$0	\$0
Generation & Transmission Cap. Credits	\$0	\$0	\$0	\$0
Other Cap. Credits & Patronage Divid.	\$0	\$0	\$0	\$0
Extraordinary Items	\$0	\$0	\$0	\$0
Patronage Capital or Margins	\$31,810	\$8,367	\$33,232	-\$24,865

	Steuben County REMC			
	Monthly Operating Report			
	Year to Date			Oct-25
	Last Year	This Year	Budget	Variance
Operating Revenue	\$3,150,793	\$3,349,800	\$3,964,164	-\$614,364
Distribution Expense - Operations	\$72,672	\$42,641	\$45,580	-\$2,939
Distribution Expense - Maintenance	\$177,320	\$189,665	\$132,341	\$57,324
Consumer Accounts Expense	\$16,586	-\$1,261	\$29,688	-\$30,949
Consumer Services & Info Exp.	\$0	\$0	\$0	\$0
Sales Expense	\$0	\$6,055	\$0	\$6,055
Administrative & General Expense	\$478,142	\$533,877	\$662,972	-\$129,095
Total Operation & Maintenance Exp.	\$744,719	\$770,977	\$870,581	-\$99,604
Depreciation & Amortization Exp.	\$1,000,293	\$1,175,570	\$1,310,693	-\$135,123
Tax Expense - Property	\$60,000	\$0	\$100,000	-\$100,000
Tax Expense - Other	\$0	\$0	\$0	\$0
Interest on Long Term Debt	\$1,042,747	\$1,314,909	\$1,468,746	-\$153,837
Interest Charged to Construction(credit)	\$0	\$0	\$0	\$0
Interest Expense Other	\$0	\$0	\$0	\$0
Other Deductions	\$0	\$0	\$0	\$0
Total Cost of Electric Service	\$2,847,759	\$3,261,457	\$3,750,020	-\$488,563
Patronage Capital & Operating Margins	\$303,034	\$88,344	\$214,144	-\$125,800
Non Operating Margins - Interest	\$0	\$0	\$0	\$0
Allowance for Funds Used During Const.	\$0	\$0	\$0	\$0
Non Operating Margins - Other	\$0	\$0	\$0	\$0
Generation & Transmission Cap. Credits	\$0	\$0	\$0	\$0
Other Cap. Credits & Patronage Divid.	\$0	\$0	\$0	\$0
Extraordinary Items	\$0	\$0	\$0	\$0
Patronage Capital or Margins	\$303,034	\$88,344	\$214,144	-\$125,800

Oct. Cash Balance

Farmers State Bank	\$231,377.80
Fifth Third Bank	
1st. Federal S&L	\$86,999.27
Green Data Deposit	\$270,000.00
Capital Credits	\$362,146.15
Working Fund	\$600.00

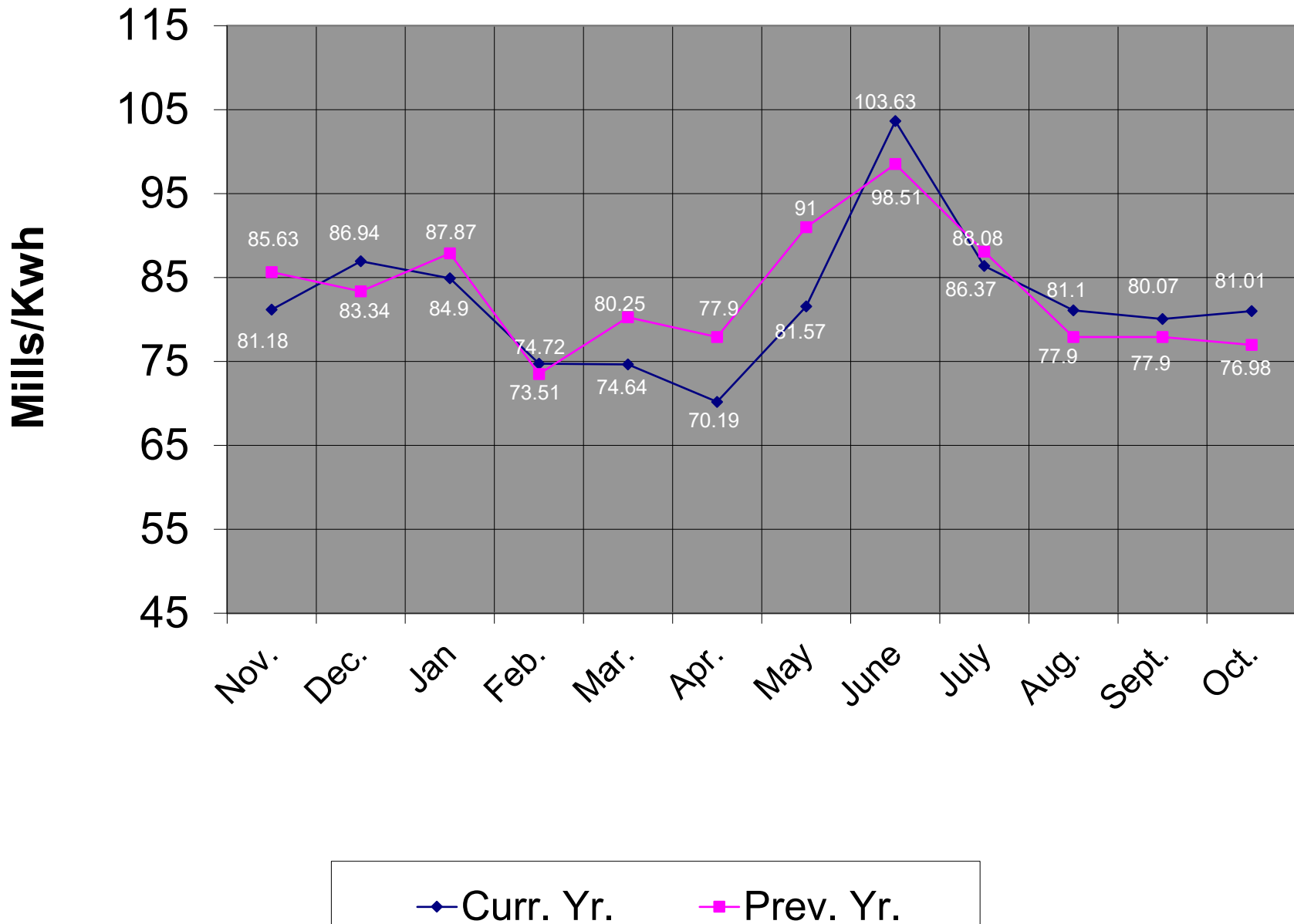
Total	\$951,123.22
--------------	---------------------

WVPA 2023 Cap Credit	\$3,667.90
WVPA 2022 Cap Credit	0
WVPA 2021 Cap Credit	0

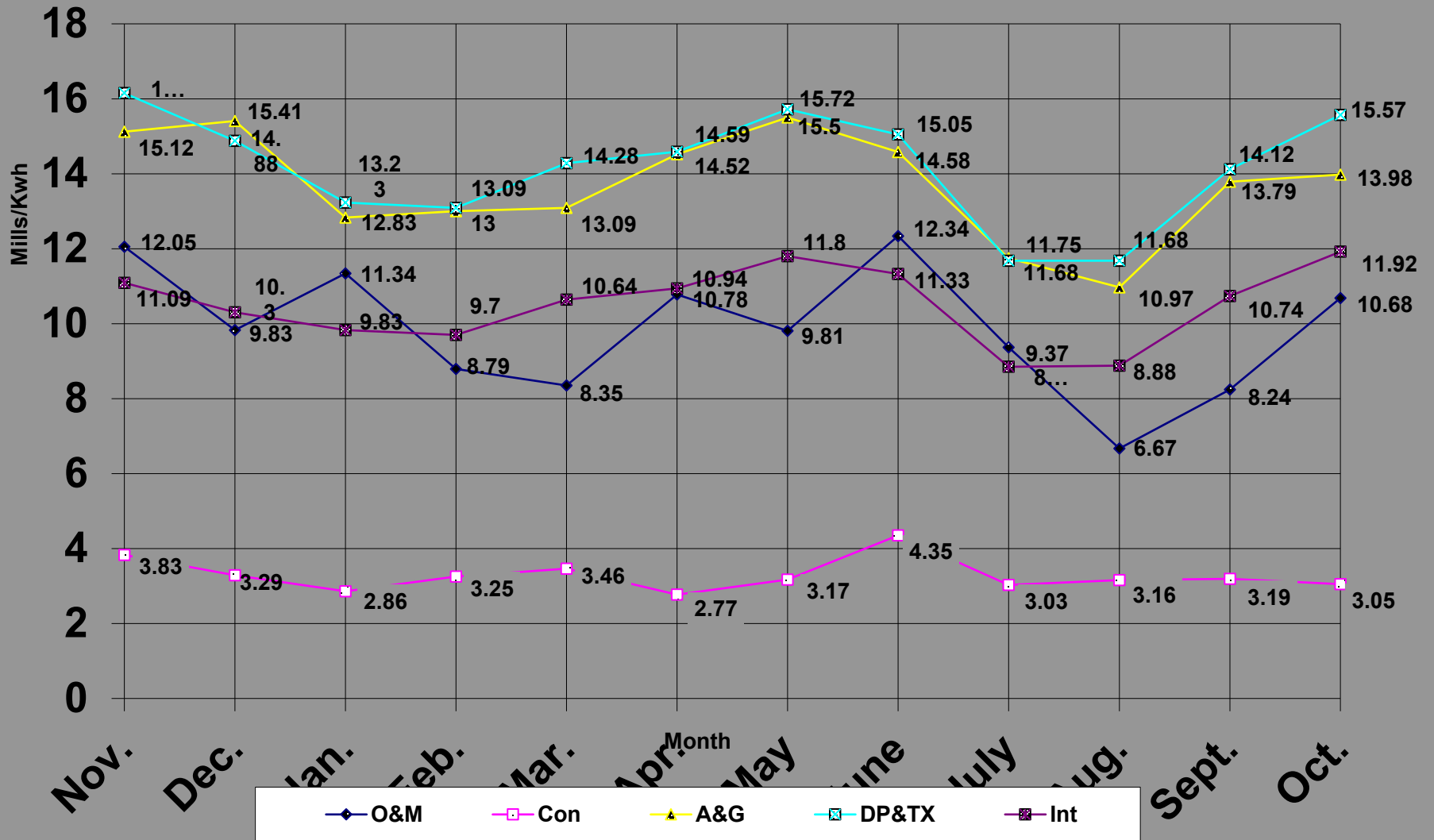
Oct. 2025 Top 40

ACCOUNT	NAME	METER USAGE	CHARGE AMOUNT		
861003	PINE MANOR INC.	1,954,000	162,494.14		
238502	COLD HEADING CO	1,162,800	133,262.36		
906701	CARDINAL IG	1,117,200	124,531.76		
13713801	FAMILY DOLLAR	920,100	102,955.71		
13840801	BRIGHTMARK	425,800	46,031.89		
675801	NUCOR BUILDING SYSTEMS	420,000	45,503.58		
641005	VENTRA ANGOLA, LLC	291,600	32,811.84		
13738600	LORDS SEED	294,300	32,561.22		
945001	719500 MEIJER, MAIL STOP #4	297,360	31,932.41		
13851400	TRUECORE LLC	246,000	27,529.03		
930100	VESTIL MANUFACTURING CORP	195,400	24,685.69		
1051700	MENARD INC	183,360	22,337.51		
709101	MSD OF STEUBEN COUNTY	151,200	19,722.54		
144404	THE GREEN DATA CENTRE LLC	378,400	19,388.05		
955101	DIVERSIFIED COATING	140,320	15,637.73		
24201	SUN NG JELLY BARTON LAKE RV LL	126,000	15,518.95		
1041901	TECHO-BLOC MIDWEST CORP	122,960	13,792.13		
975900	MSD OF STEUBEN COUNTY	84,560	10,424.20		
683706	LORDS SEED	80,000	9,051.57		
1057401	STEUBEN LAKES REGIONAL	84,320	8,952.30		
907101	METAL SPINNERS	64,000	8,722.26		
943000	YMCA OF STEUBEN COUNTY INC	77,520	8,270.16		
956205	HIGH POINT HEIFERS LLC	66,480	7,539.51		
700802	CPG OHIO LLC	64,600	7,397.90		
340102	MANAPOGO RV CAMPGROUND	52,800	6,591.97		
530301	PETROL STOPPING CTRS#45	60,320	6,535.16		
13720901	STONECO	40,400	6,254.64		
1037601	FED EX FREIGHT EAST INC	54,880	6,107.40		
762102	HANSON AGGREGATES INC SITE 562	33,200	5,906.07		
527800	TOWN OF FREMONT	55,200	5,850.41		
13610000	API CONSTRUCTION CORP	29,080	5,344.41		
13751901	ANGOLA HOGBACK LAKE KOA	41,400	5,267.17		
100001	CON-WAY CENTRAL EXPRESS	46,440	5,207.05		
13825301	WINGATE ANGOLA	40,400	4,282.34		
1042001	OLD CASTLE LAWN & GARDEN	32,280	4,176.36		
712500	EMF CORPORATION	32,300	4,137.38		
34301	ANGOLA HOGBACK LAKE KOA	32,400	3,950.61		
13900900	HAPPY ACRES LLC	28,800	3,705.98		
1038600	GLENDARIN HILLS GOLF CLUB	31,360	3,702.75		
1000202	RMH FRANCHISE	31,360	3,540.90		
	September 2025 Totals	9,590,900	\$ 1,011,615.04		0.1054765
	August 2025 Totals	10,396,100	\$ 1,144,062.81		0.1100473

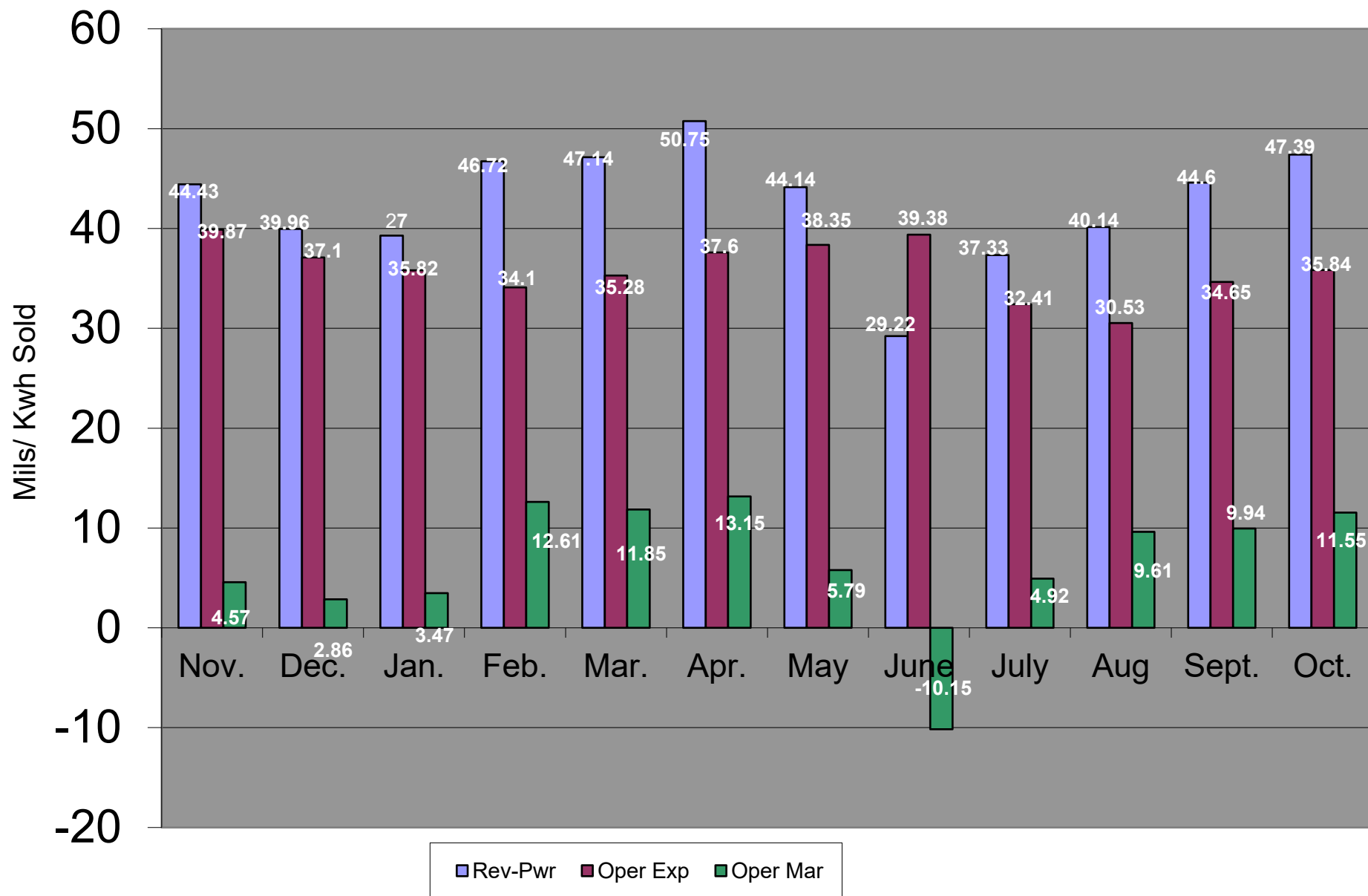
Power Cost in Mills / Kwh Sold



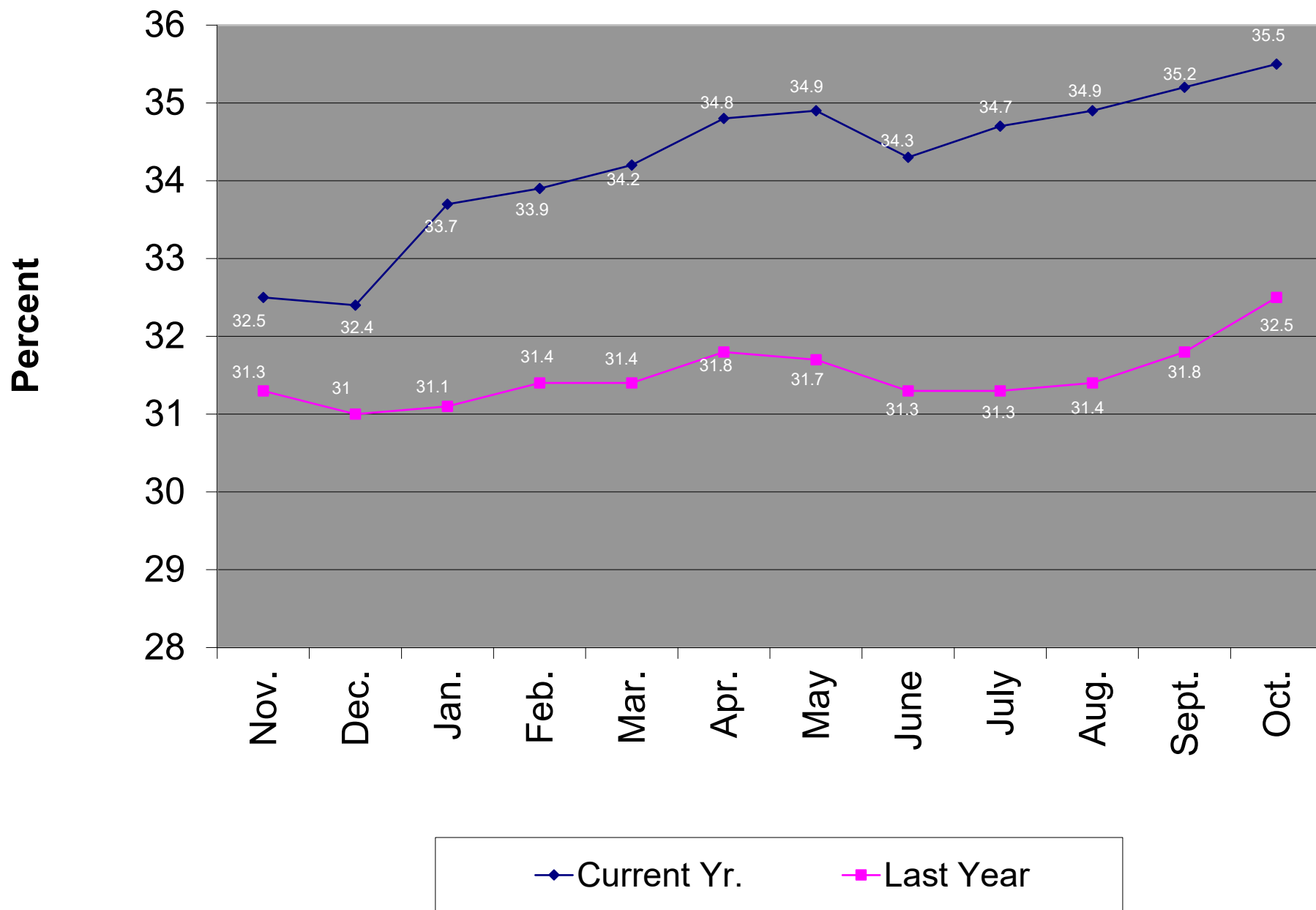
Oper. Exp. in Mills/KWH Sold



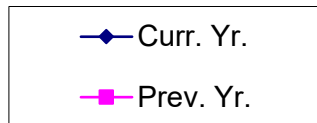
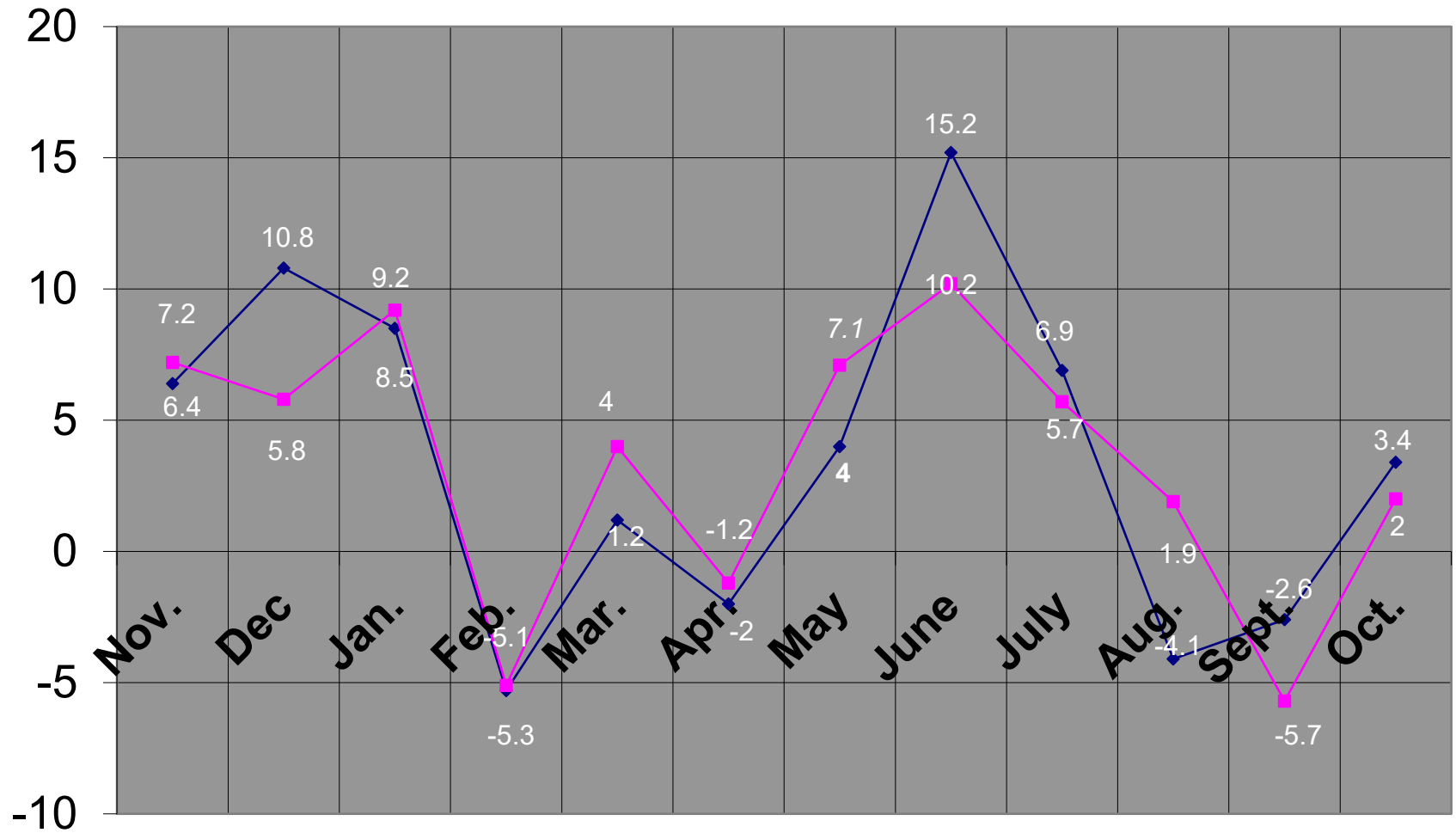
Gross Margin - Oper Exp = Oper Margin



Equity as a % of Total Assets

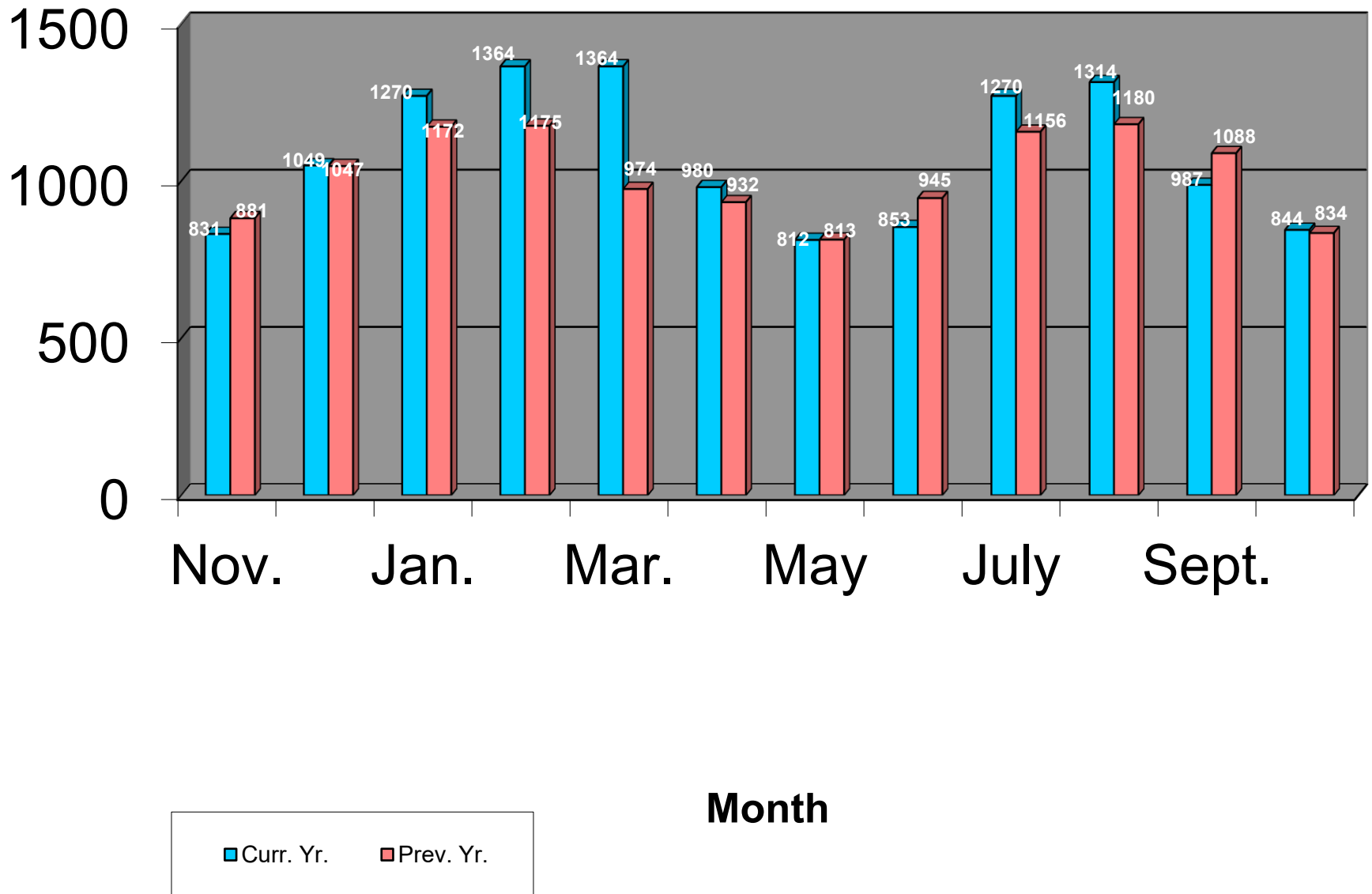


Percent Line Loss

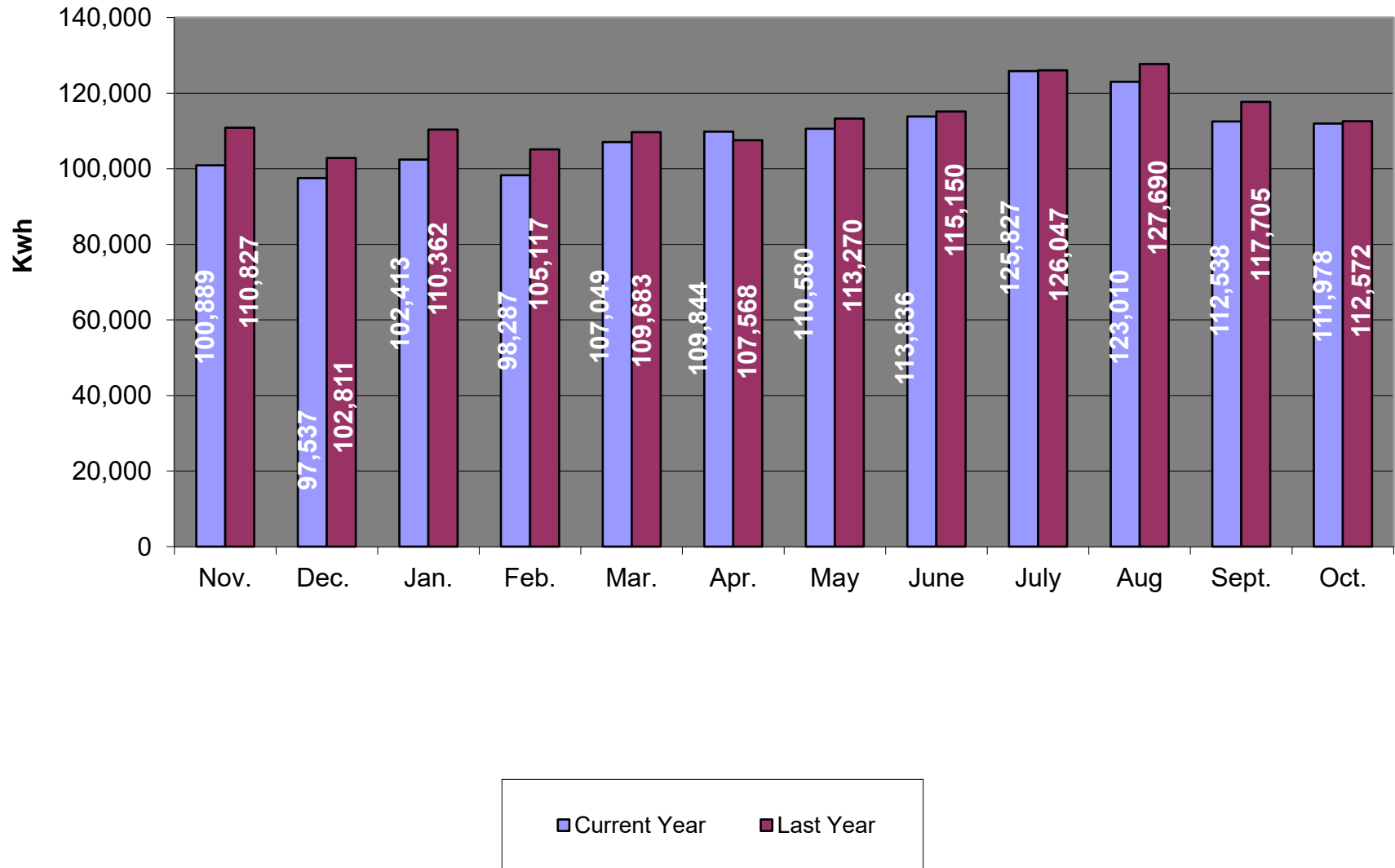


Period Ending

Average Residential Kwh Consumption



C&I Average Consumption



STEUBEN CO REMC MONTHLY OUTAGE SUMMARY FOR: OCTOBER 25

	POWER SUPPLIER	MAJOR STORM	SCHEDULED	ALL OTHER	TOTAL
<u>NO. OF OUTAGES</u> THIS MONTH	0	0	3	229	232
THIS MONTH LAST YEAR	0	0	1	59	60
THIS YEAR TO DATE	0	83	67	1061	1211
LAST YEAR TO DATE	0	0	32	1119	1151
<u>CONSUMER HR. PER</u> THIS MONTH	0	0	57.33	5183.12	5240.45
THIS MONTH LAST YEAR	0	0	1.01	126496.91	126497.9
THIS YEAR TO DATE	0	3408.22	823.73	24064.95	28296.9
LAST YEAR TO DATE	0	0	1785.65	253589.15	255374.8
<u>AVG.HRS PER CON.</u> THIS MONTH	0	0	0.00532	0.48152	0.48684
THIS MONTH LAST YEAR	0	0	0.00009	11.92017	11.92027
THIS YEAR TO DATE	0	0.31754	0.07674	2.2421	2.6364
LAST YEAR TO DATE	0	0	0.1687	23.9687	24.137

DATA FOR COMPUTING AVERAGE HOURS PER CONSUMER:

NUMBER OF CONSUMERS SERVED THIS MONTH: 10764

AVERAGE NUMBER OF CONSUMERS THIS YEAR TO DATE: 10733

NUMBER OF CONSUMERS THIS MONTH LAST YEAR: 10612

AVERAGE NUMBER OF CONSUMERS LAST YEAR TO DATE: 10580

Otter Substation

On May 22, 2025 Otter was taken offline due to gassing in the transformer.

During the week of November 13th final testing revealed a wiring issue which required additional wiring and testing. As of November 20th, Otter substation is back in service.

Steuben County REMC

Agenda

Steuben County REMC
Regular Board of Directors Meeting
November 24, 2025

1. Call to Order
2. Roll Call
3. General Consent Items
 - a. Agenda
 - b. Minutes of November 3, 2025 Board Meeting
 - c. Special Meeting Minutes of November 18, 2025
 - d. Bills
 - e. Director Expenses
 - f. New Hookups
 - g. New Memberships
 - h. IUPPS Update
4. Informative Reports
 - a. CEO Financial Report
 - b. Re-Comm Update
 - c. Operation Round Up
 - d. Safety Meeting
 - e. WVPA Board Meeting
 - f. Member Services Report
 - g. Cyber Security
 - h. Broadband Update
 - i. IEC Legislative Dinner Update
 - j. Preliminary Budget Review
 - k. 2023 Write-Off's
5. Executive Session
 - a. CEO Search
6. Decisions Needed
 - a.
7. Corporate Council Report
 - a.
8. Other Business
9. Calendar & Announcements
 - a. Next Regular Meeting December ???, 2025
10. Adjournment



Nov. 2025 Board Meeting							
2004 Total				\$18,032.48			
2005 Total				\$41,792.07			
2006 Total				\$41,496.82			
2007 Total				\$41,034.09			
2008 Total				\$44,092.37			
2009 Total				\$44,920.33			
2010 Total				\$42,431.35			
2011 Total				\$41,919.61			
2012 Total				\$45,034.33			
2013 Total				\$42,477.23			
2014 Total				\$42,936.08			
2015 Total				\$43,682.99			
2016 Total				\$43,392.79			
2017 Total				\$44,027.97			
2018 Total				\$44,865.15			
2019 Total				\$45,389.98			
2020 Total				\$46,640.50			
2021 Total				\$48,570.78			
2022 Total				\$44,975.76			
2023 Total				\$41,850.76			
2024 Total				\$47,035.91			
2025							
Jan.				\$3,603.12			
Feb.				\$3,579.22			
Mar.				\$3,570.02			
Apr.				\$3,573.07			
May				\$3,585.32			
June				\$3,564.94			
July				\$3,652.55			
Aug				\$3,646.76			
Sept.				\$3,659.14			
Oct.				\$3,613.93			
Nov.	Cycle 4		\$11.59				
	Cycle 1		\$1,027.74				
	Cycle 2		\$1,145.57				
	Cycle 3		\$1,412.05				
Adj.			\$0.00				
				\$3,596.95			
Total				\$936,244.37			
Membership Participation Level							
Total			10,167				
Participating Accounts			7,593				
Current Participation Rate			74.68%				
Last Months Rate			74.31%				

Steuben County REMC

Agenda

Steuben County REMC
Regular Board of Directors Meeting
November 24, 2025

1. Call to Order
2. Roll Call
3. General Consent Items
 - a. Agenda
 - b. Minutes of November 3, 2025 Board Meeting
 - c. Special Meeting Minutes of November 18, 2025
 - d. Bills
 - e. Director Expenses
 - f. New Hookups
 - g. New Memberships
 - h. IUPPS Update
4. Informative Reports
 - a. CEO Financial Report
 - b. Re-Comm Update
 - c. Operation Round Up
 - d. Safety Meeting
 - e. WVPA Board Meeting
 - f. Member Services Report
 - g. Cyber Security
 - h. Broadband Update
 - i. IEC Legislative Dinner Update
 - j. Preliminary Budget Review
 - k. 2023 Write-Off's
5. Executive Session
 - a. CEO Search
6. Decisions Needed
 - a.
7. Corporate Council Report
 - a.
8. Other Business
9. Calendar & Announcements
 - a. Next Regular Meeting December ???, 2025
10. Adjournment

Safety Report
Steuben County REMC
Board of Directors

November 19, 2025

November 21, 2025- Chris Hamilton from IEC will be here for the November safety meeting with the topic being grounds testing.

There were no injuries or loss of time reported.

Steuben County REMC

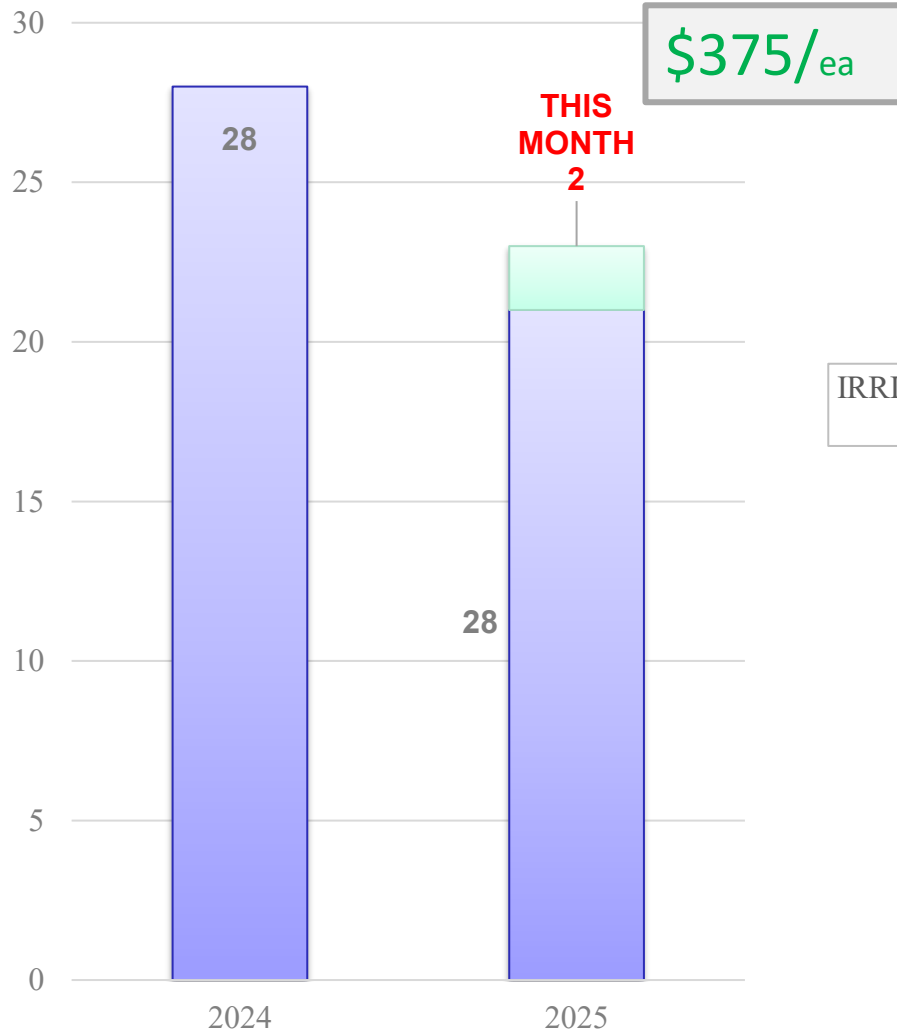
Agenda

Steuben County REMC
Regular Board of Directors Meeting
November 24, 2025

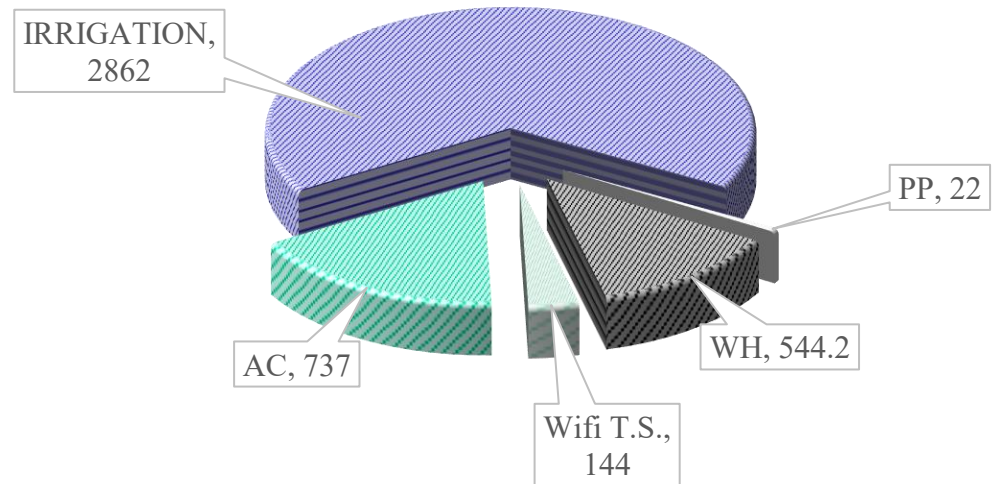
1. Call to Order
2. Roll Call
3. General Consent Items
 - a. Agenda
 - b. Minutes of November 3, 2025 Board Meeting
 - c. Special Meeting Minutes of November 18, 2025
 - d. Bills
 - e. Director Expenses
 - f. New Hookups
 - g. New Memberships
 - h. IUPPS Update
4. Informative Reports
 - a. CEO Financial Report
 - b. Re-Comm Update
 - c. Operation Round Up
 - d. Safety Meeting
 - e. WVPA Board Meeting
 - f. Member Services Report
 - g. Cyber Security
 - h. Broadband Update
 - i. IEC Legislative Dinner Update
 - j. Preliminary Budget Review
 - k. 2023 Write-Off's
5. Executive Session
 - a. CEO Search
6. Decisions Needed
 - a.
7. Corporate Council Report
 - a.
8. Other Business
9. Calendar & Announcements
 - a. Next Regular Meeting December ???, 2025
10. Adjournment

MARKETING & MEMBER SERVICES

WATER HEATER SALES

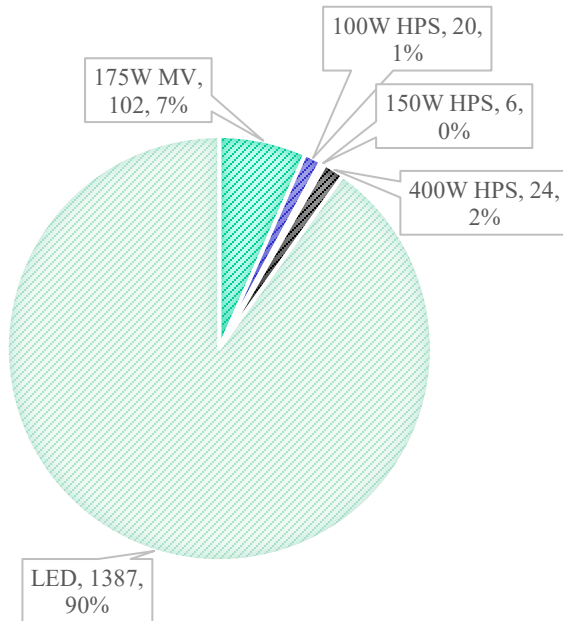


LOAD MANAGEMENT – KW 4197.2 KW



MARKETING & MEMBER SERVICES

SECURITY LIGHTS AS OF 1/2025



2025 SECURITY LIGHT INSTALLS/REMOVALS

3- REMOVALS

(0) this month

7 - NEW

(1) this month

16 - SWAP/ MAINT.

(0) this month



9 Members

122 Units
(NO CHANGE)



EV CHARGER STATISTICS

3500 VEHICLES CHARGED

16,129 kWh's CONSUMED

7.13 HRS - AVG SESSION

7 VEHICLES CHARGED
329 kWh's CONSUMED

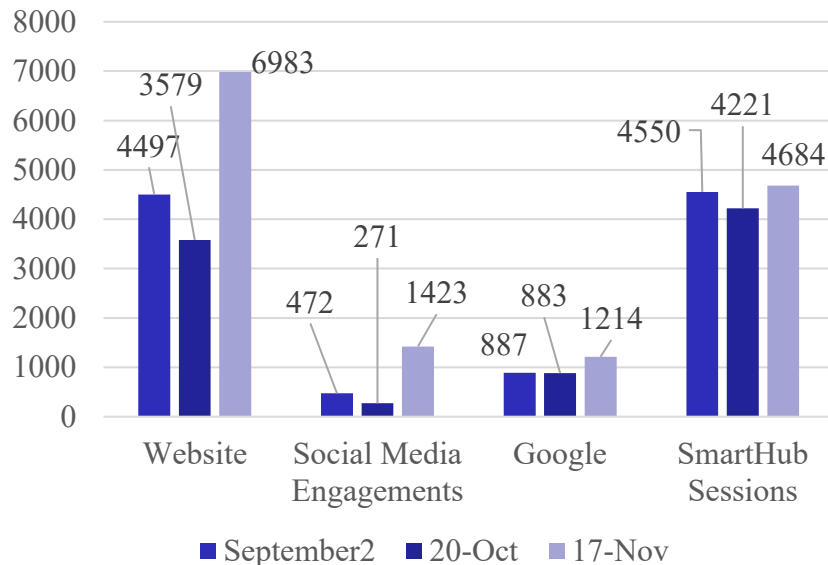
MARKETING & MEMBER SERVICES

INCLUDES PMT,
VIEW BILL, VIEW
USAGE, ECT...

9773 Subscribers



Member Engagement

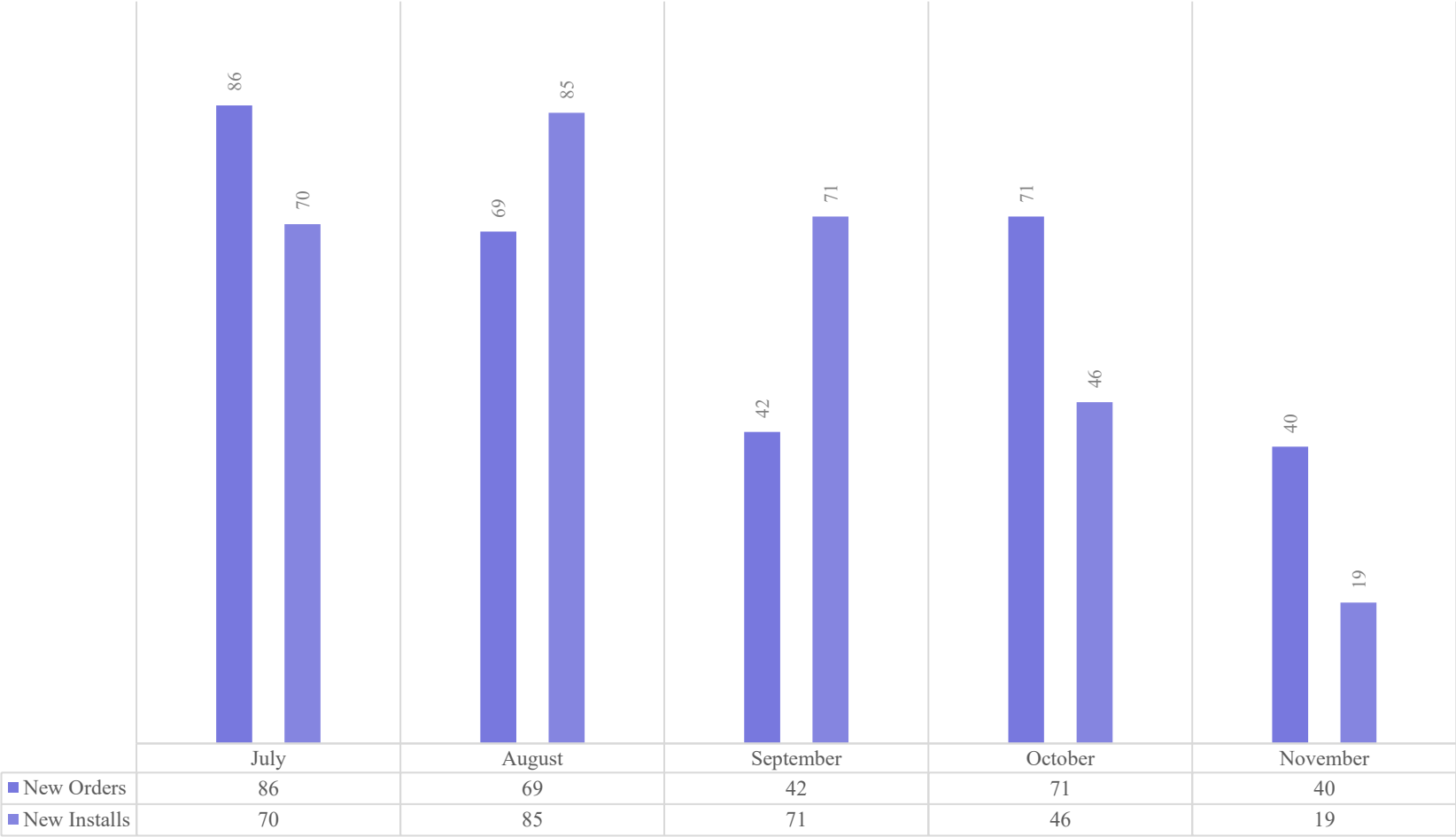


Website Activity:

Total		6,983 100% of total
1	Storm/ Outage Center Steuben County REMC	2,411 (34.53%)
2	Home Steuben County REMC	2,180 (31.22%)
3	Unclaimed Capital Credits Steuben County REMC	330 (4.73%)
4	Contact Us Steuben County REMC	277 (3.97%)
5	Packages/ Pricing Steuben County REMC	276 (3.95%)
6	Reporting an Outage Steuben County REMC	258 (3.69%)
7	SmartHub Steuben County REMC	206 (2.95%)
8	Check Availability Steuben County REMC	145 (2.08%)
9	How to make a payment Steuben County REMC	128 (1.83%)
10	Resource Not Found Steuben County REMC	127 (1.82%)

NEW ORDERS/INSTALLS

New Orders New Installs



11.18.2025

	Zone	Marketing Zone	Active	Pending	11.17	NEW	Total Members	% Take
PHASE 1	1	OTTER NORTHWEST	96	0	96	0	118	81%
	2	OTTER NORTHEAST	386	1	387	2	632	61%
	3	OTTER SOUTH	726	3	729	7	973	74%
	4	ORLAND MP	215	2	217	2	361	60%
	5	HELMER MP	145	0	145	0	197	74%
PHASE 2	6	NEVADA NORTH	223	1	224	0	382	59%
	7	NEVADA NORTHEAST	377	2	379	-1	874	43%
	8	NEVADA WEST	440	4	444	6	1110	39%
	9	NEVADA EAST	247	3	250	3	519	48%
PHASE 3	10	SCOTT NORTHWEST	343	10	353	14	549	62%
	11	SCOTT WEST, NORTHEAST, SOUTH	85	2	87	0	166	52%
	12	RUHL	211	4	215	3	404	52%
	13	ANGOLA N&W	268	1	269	5	427	62%
	14	SCOTT EAST	436	4	440	3	738	59%
PHASE 4	15	ANGOLA SOUTH	226	2	228	1	374	61%
	16	STEUBENVILLE	200	4	204	6	423	47%
	17	WATERLOO	64	0	64	-1	177	37%
P2P			335	6	335	3		
Total			5023	49	5066	53	8424	60%

BROADBAND TAKE RATE PER ZONE

Annual Meeting Committee 2026

- The committee met for the first time on 11/3/2025.
 - Topics Discussed:
 - Review of projected upfront cost changes to a hybrid format (2025–2026)
 - Preliminary evaluation of potential costs associated with an in-person annual meeting
 - Analysis of voting participation over the last three annual meetings and the impact of meeting format
- Information Requested for the November 24, 2025 Meeting:
 - Cost estimates from Survey & Ballot Systems for an online-only election
 - Cost estimates for an online-only election with paper ballots available upon request
 - Options for adjusting return postage requirements
 - Available kiosk solutions for off-site voting

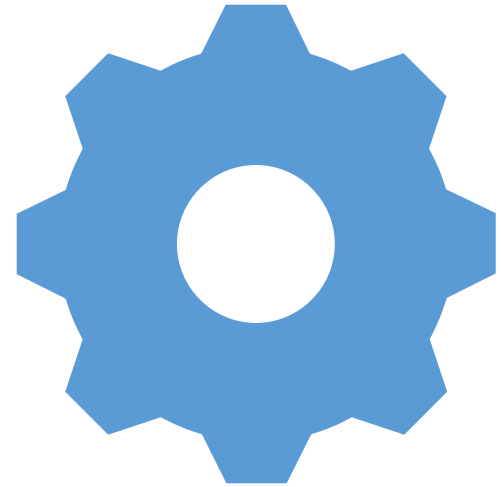
Other Updates

Youth Program Application Update:

- Camp Kilowatt, Youth Tour, and Page Day Applications opened on November 1st.

Important Capital Credit Updates

- Unclaimed (Escheat)
 - Deadline December 1, 2025
- General Retirement
 - Issuing on November 1, 2025



Steuben County REMC

Agenda

Steuben County REMC
Regular Board of Directors Meeting
November 24, 2025

1. Call to Order
2. Roll Call
3. General Consent Items
 - a. Agenda
 - b. Minutes of November 3, 2025 Board Meeting
 - c. Special Meeting Minutes of November 18, 2025
 - d. Bills
 - e. Director Expenses
 - f. New Hookups
 - g. New Memberships
 - h. IUPPS Update
4. Informative Reports
 - a. CEO Financial Report
 - b. Re-Comm Update
 - c. Operation Round Up
 - d. Safety Meeting
 - e. WVPA Board Meeting
 - f. Member Services Report
 - g. Cyber Security
 - h. Broadband Update
 - i. IEC Legislative Dinner Update
 - j. Preliminary Budget Review
 - k. 2023 Write-Off's
5. Executive Session
 - a. CEO Search
6. Decisions Needed
 - a.
7. Corporate Council Report
 - a.
8. Other Business
9. Calendar & Announcements
 - a. Next Regular Meeting December ???, 2025
10. Adjournment

Cyber Security

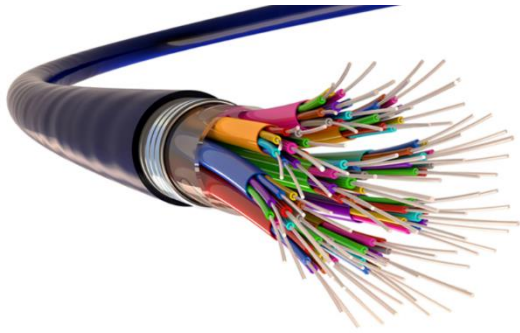
Other than our normal updates and patches by NISC, Tantalus and WVPA there is no other significant changes to our hardware or software to report relating to cyber security.

Steuben County REMC

Agenda

Steuben County REMC
Regular Board of Directors Meeting
November 24, 2025

1. Call to Order
2. Roll Call
3. General Consent Items
 - a. Agenda
 - b. Minutes of November 3, 2025 Board Meeting
 - c. Special Meeting Minutes of November 18, 2025
 - d. Bills
 - e. Director Expenses
 - f. New Hookups
 - g. New Memberships
 - h. IUPPS Update
4. Informative Reports
 - a. CEO Financial Report
 - b. Re-Comm Update
 - c. Operation Round Up
 - d. Safety Meeting
 - e. WVPA Board Meeting
 - f. Member Services Report
 - g. Cyber Security
 - h. Broadband Update
 - i. IEC Legislative Dinner Update
 - j. Preliminary Budget Review
 - k. 2023 Write-Off's
5. Executive Session
 - a. CEO Search
6. Decisions Needed
 - a.
7. Corporate Council Report
 - a.
8. Other Business
9. Calendar & Announcements
 - a. Next Regular Meeting December ???, 2025
10. Adjournment



BROADBAND UPDATE

NOVEMBER 2025



SERVICE INSTALLATION REPORT

			PTP COUNT	258
	NEW ORDERS HISTORICAL AVERAGE			15.20879121
AVERAGE NEW ORDERS /WEEK (LAST TWO MONTHS)				11
			TODAY	11/19/2025
		DAYS LEFT IN THE YEAR		42
		WEEKS LEFT IN THE YEAR		6
		PROJECTED NEW ORDERS		66
	TOTAL PROJECTED ACTIVE ACCOUNTS			5054
	TOTAL PROJECTED ACTIVE FTTH MEMBERS			4796
		PROJECTED TAKE RATE		58%
		FULL ACTUAL TAKE RATE		57.00%
		FTTH ACTUAL TAKE RATE		55.69%

➤ SERVICE INSTALLATIONS TO DATE:

- 4949 ACTIVE SUBSCRIBERS AS OF 11/19/25.

➤ RUN RATE

- NEW ORDERS WEEKLY AVERAGE REMAINED STEADY AT 11 THIS MONTH. AVERAGE WEEKLY INSTALLS FELL TO 8 PER WEEK, FOLLOWING LAST MONTHS DECLINE IN NEW ORDERS.

FTTH STATUS REPORT



EMF CORP COMMERCIAL INSTALLATION

COMPLETED INSTALL –
SERVICE IS UP.



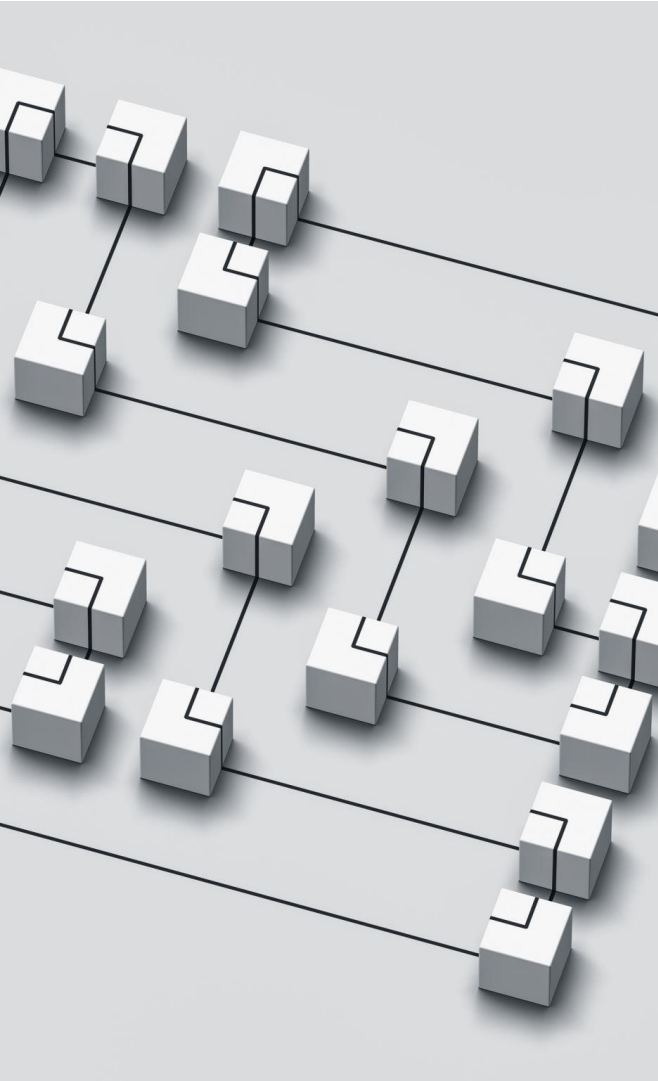
MANAPOGO SECONDARY 2.5Gb/S

STARTED TALKS ON SECONDARY
SERVICE LINE.



SMALL BUSINESS PRICING

NEED TO TEE UP DISCUSSION
REGARDING SMALL BUSINESS
PRICING. WE'RE SEEING SMALLER
LOCAL BUSINESSES BALK AT OUR
COMMERCIAL PRICING.



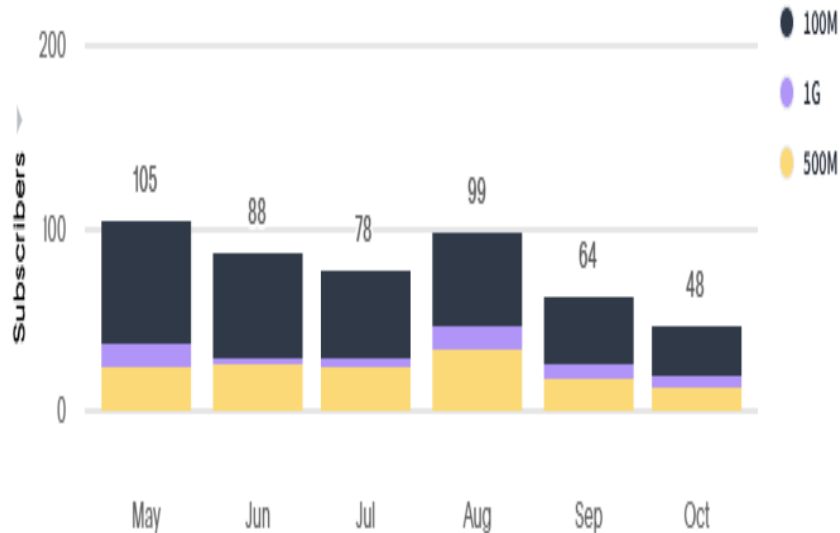
P2P STATUS REPORT

- P2P NETWORK UPDATE.
 - SITE SURVEY'S FOR INVENTORY AUDIT OF i-NET EQUIPMENT STILL UNDERWAY.
- 1 DISCONNECT REQUEST RECEIVED –SHAMBAUGH
- NEW SERVICE REQUEST ASHLEY – JICI HL THOMPSON DR.

SUBSCRIBER STATISTICS

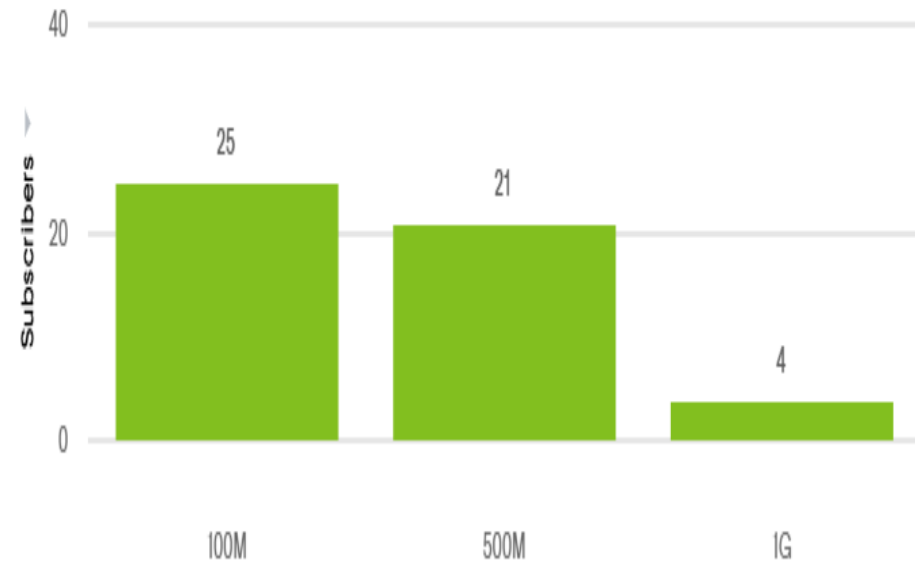
CONTINUING TO SEE AN UPTICK IN SUBSCRIBER COUNT

Acquisition Rate & Insights



↑
for 2025

New Subscribers by Service Tier & Technology

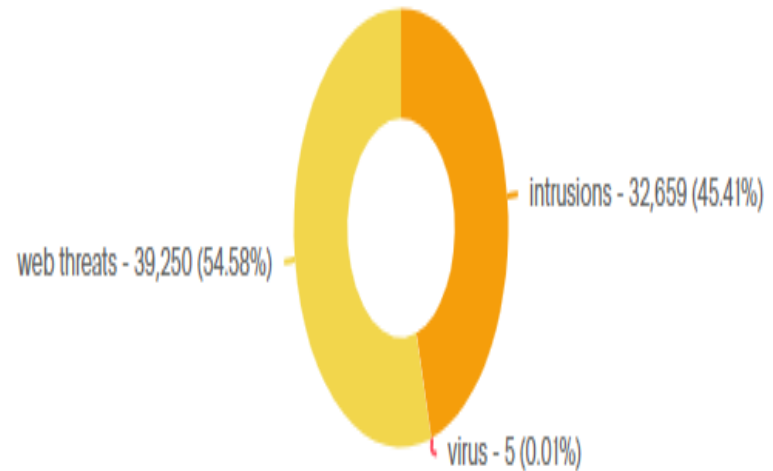


STATISTICS CONT'D

Blocked Threats Insights

...

- IN THE LAST TWO MONTHS WE HAVE BLOCKED 45,011 WEB THREATS AND 41,404 INTRUSIONS AND 2 VIRUSES FOR OUR MEMBERS.



CALL CENTER STATISTICS

NRTC CALL CENTERS HANDLE BOTH
OVERFLOW MEMBER SERVICE CALLS
AS WELL AS TECH SUPPORT CALLS

CALLS REFERRED BACK TO US DURING BUS. HOURS	43
CHECKING ON AN EXISTING TICKET	1
ESCALATED TO BUSINESS OFFICE	31
AFTER HOURS ESCALATED TO DAVE	2
CALL CENTER RESOLVED	23
DISCONNECTED BEFORE ANSWERED	5
OUTAGE RELATED SERVICE ORDERS	31

Steuben County REMC

Agenda

Steuben County REMC
Regular Board of Directors Meeting
November 24, 2025

1. Call to Order
2. Roll Call
3. General Consent Items
 - a. Agenda
 - b. Minutes of November 3, 2025 Board Meeting
 - c. Special Meeting Minutes of November 18, 2025
 - d. Bills
 - e. Director Expenses
 - f. New Hookups
 - g. New Memberships
 - h. IUPPS Update
4. Informative Reports
 - a. CEO Financial Report
 - b. Re-Comm Update
 - c. Operation Round Up
 - d. Safety Meeting
 - e. WVPA Board Meeting
 - f. Member Services Report
 - g. Cyber Security
 - h. Broadband Update
 - i. IEC Legislative Dinner Update
 - j. Preliminary Budget Review
 - k. 2023 Write-Off's
5. Executive Session
 - a. CEO Search
6. Decisions Needed
 - a.
7. Corporate Council Report
 - a.
8. Other Business
9. Calendar & Announcements
 - a. Next Regular Meeting December ???, 2025
10. Adjournment

2025 Write Offs for year 2023

Angela Alleshouse		351.87
Andrew Baatz		32.87
Brenda Bach		82.30
Victoria Baran		790.56
Robbie Buras		445.51
John Castanzo		266.45
Archie Clark		261.75
Maryetta Clark		424.00
Robin Clifford		38.37
Patrick Cloyd		153.38
Patrick Cloyd		23.14
Carrie Cobb		55.99
David Combs		185.90
David Concus		40.00
Nicholas Cope		179.78
Crystal Cross		57.66
Ilusion Cruz		75.70
Lawrence Diehlman		321.22
Lillian Dunn		157.57
Lillian Dunn		360.66
Lillian Dunn		158.67
Becca Fink		96.72
Jerry Foreman		76.00
Bailey Fulk		1,139.08
Cheyenne Gramling		85.15
Curtis Gregg		47.25
Daniel Haifley		313.06
Timothy Hamilton		270.96
Kyle Handshoe		145.05
Chris Hanna		257.80
Gerald Harley		58.18
Jerry Howard		291.06
Jason Jever		301.89
Roger Kill		12.06
Tiffany Krise		648.04
Don Ladd		94.00
Jack Loveless		427.92
Samuel Luna		39.75
Joel Lusch		58.12
Cody Magg		37.40
Nicholas Mahoney		123.00
Jennifer Moyer		104.65
Zachary Northrup		23.58
Donna Ort		112.28
David Osbun		347.97
Cody Pace		69.88
Laura Porter		13.67
William Prindle		11.50
Israel Ramirez		182.00

Victoria Ramos-Hernandez	150.67
Robby Rasbaugh	27.00
Jesse Reaper	598.86
Samantha Jo Renfrow	189.09
Angela Roby	229.59
Millie P Rouse	400.00
Margaret Rupp	32.00
Eric Schwartz	53.45
Lavon Shelton	9.36
Kevin Shiveley	44.13
Natasha Shock	360.87
Becky Snyder	34.19
John Squier II	2,101.46
John Squier II	334.41
David Swanson	39.35
Marikay Swick	339.22
Shane Terry	210.50
The Hangout Bar & Grill	2,018.00
The Hangout Bar & Grill	61.86
The Hangout Bar & Grill	358.00
Carl Thomas	85.50
Bryce Turner	615.00
Charles Vaughan	263.39
Amy Wainwright	6.00
Amy Wainwright	5.00
Shana Walter	41.00
Jason Wert	19.25
Mildred Wilson	46.00
Kirstina Winter	95.31
BBB Properties	16.16
Bradley Paolone	508.35
Heather Riddleton	148.76
Crustal Cross	34.64
Jeanette Gramling	394.35
John Squier II	248.31
	19,970.40
MR	
JCH Fiber Group LLC	964.63
IMI	903.19
Windy City Underground	14,174.42
Global Paving	1,186.55
Intercarier Networks	183.94
Thomas Jarrell	1,965.97
Donald Banks	1,977.00
	21,355.70

Steuben County REMC

Agenda

Steuben County REMC
Regular Board of Directors Meeting
November 24, 2025

1. Call to Order
2. Roll Call
3. General Consent Items
 - a. Agenda
 - b. Minutes of November 3, 2025 Board Meeting
 - c. Special Meeting Minutes of November 18, 2025
 - d. Bills
 - e. Director Expenses
 - f. New Hookups
 - g. New Memberships
 - h. IUPPS Update
4. Informative Reports
 - a. CEO Financial Report
 - b. Re-Comm Update
 - c. Operation Round Up
 - d. Safety Meeting
 - e. WVPA Board Meeting
 - f. Member Services Report
 - g. Cyber Security
 - h. Broadband Update
 - i. IEC Legislative Dinner Update
 - j. Preliminary Budget Review
 - k. 2023 Write-Off's
5. Executive Session
 - a. CEO Search
6. Decisions Needed
 - a.
7. Corporate Council Report
 - a.
8. Other Business
9. Calendar & Announcements
 - a. Next Regular Meeting December ???, 2025
10. Adjournment


December 2025

Steuben County REMC

Schedule of Events

- Dec. ??- The topic and date for this months safety meeting has not yet been set.
- Dec. 6- The Cooperative's annual awards dinner will be held at Club Paradise restaurant beginning at 6:00 pm.
- Dec 8-9 - IEC will be holding their Annual Meeting at the Marriot Hotel in downtown Indianapolis.
- Dec. 9 - Wabash Valley Power will be holding their regular Board meeting in Indianapolis.
- Dec. 12- The preliminary audit visit has been scheduled.
- Dec. 24- Due to the Holidays we typically reschedule the date and time of the Steuben County REMC regular Board of Directors Meeting.
- Dec. 25&26- Steuben County REMC office will be closed in observance of the Christmas Holiday.
- Dec 26-Jan 2 Kevin will be on vacation
- Jan. 1 - The Cooperative office will be closed for New Years

The power of human connections

Sun	Mon	Tue	Wed	Thu	Fri	Sat
	1	2	3 WVPA B-Btg.	4	5	6 Annual Awards Dinner
7	8 IEC Annual Mtg. Indy	9 WVPA B-Mtg.	10	11	12 First Audit Visit	13
14	15	16	17	18	19	20
21	22	23	24 REMC B-Mtg?	25  Closed for Xmas	26	27
28	29	30	31			

P.O. Box 359
1212 S Wayne St
Angola IN 46703

Phone: 260/665-3563
Fax: 260/665-7495
Email: remcsteuben@remcsteuben.com

