



REGULAR BOARD OF DIRECTORS MEETING

STEBEN COUNTY REMC

AGENDA

May 26, 2026 at 6:00pm



Steuben County REMC
ELECTRIC • BROADBAND

REGULAR BOARD OF DIRECTORS MEETING
STEBEN COUNTY REMC
AGENDA
May 26, 2026 at 6:00pm

- 1. Call to Order**
- 2. Roll Call**
- 3. General Consent Items**
 - a. Agenda
 - b. Minutes of April 20, 2026 Board Meeting
 - c. Bills
 - d. Director Expenses
 - e. New Hookups
 - f. New Memberships
 - g. IUPPS Update
- 4. Informative Reports**
 - a. CEO Financial Report
 - b. Re-Comm Update
 - c. Operation Round Up
 - d. Safety Meeting
 - e. WVPA Board Meeting
 - f. IEC Board Meeting
 - g. Legislative Conference Review
 - h. Member Services Report
 - i. Annual 990 Review
 - j. Broadband Update
 - k. Strategic Planning Discussion
 - l. Annual Meeting Update
 - m. Call-to- Order Board Portal Review
 - n.
- 5. Executive Session**
 - a.
- 6. Decisions Needed**
 - a.
- 7. Corporate Council Report**
 - a.
- 8. Other Business**
 - a. CEO -100 Day Review
 - b.
- 9. Calendar & Announcements**
 - a. Next Regular Meeting June 29, 2026
- 10. Adjournment**

Steuben County REMC

Monthly Operating Report

	Year to Date			Apr-26	This Month			
	Last year	This Year	Budget		Apr-26	Budget	Variance	
				Variance	Apr-26	Budget	Variance	
Operating Revenue	\$10,350,332	\$10,232,662	\$10,330,536	-\$97,874	\$2,485,936	\$2,748,999	\$2,408,737	\$340,262
Kwh Sold	73,453,553	70,639,435	0	70,639,435	17,440,420	19,332,424	0	19,332,424
Cost of Purchased Power	\$5,600,483	\$5,532,084	\$5,720,406	-\$188,322	\$1,224,217	\$1,404,547	\$1,295,869	\$108,678
Kwh Purchased	74,181,207	70,714,240	0	70,714,240	17,107,057	17,565,588	0	17,565,588
Distribution Expense - Operations	\$239,501	\$173,682	\$235,308	-\$61,626	\$55,245	\$25,119	\$57,120	-\$32,001
Distribution Expense - Maintenance	\$481,059	\$474,811	\$572,142	-\$97,331	\$132,729	\$83,653	\$137,314	-\$53,661
Consumer Accounts Expense	\$157,912	\$168,385	\$184,594	-\$16,209	\$41,141	\$40,553	\$44,659	-\$4,106
Consumer Services & Info Exp.	\$26,369	\$26,848	\$66,324	-\$39,476	\$1,503	\$5,021	\$15,019	-\$9,998
Sales Expense	\$42,480	\$45,660	\$29,612	\$16,048	\$5,690	\$14,704	\$6,359	\$8,345
Administrative & General Expense	\$979,724	\$1,206,902	\$1,199,842	\$7,060	\$253,214	\$324,932	\$275,727	\$49,205
Total Operation & Maintenance Exp.	\$7,527,529	\$7,628,372	\$8,008,228	-\$379,856	\$1,713,739	\$1,898,527	\$1,832,067	\$66,460
Depreciation & Amortization Exp.	\$967,453	\$1,028,079	\$1,035,413	-\$7,334	\$243,399	\$256,220	\$259,284	-\$3,064
Tax Expense - Property	\$44,000	\$48,000	\$48,000	\$0	\$11,000	\$12,000	\$12,000	\$0
Tax Expense - Other	\$0	\$0	\$2,303	-\$2,303	\$0	\$0	\$0	\$0
Interest on Long Term Debt	\$753,208	\$767,120	\$767,118	\$2	\$190,815	\$191,333	\$193,119	-\$1,786
Interest Charged to Construction(credit)	\$0	\$0	\$0	\$0	\$0	\$0	\$0	\$0
Interest Expense Other	\$0	\$0	\$0	\$0	\$0	\$0	\$0	\$0
Other Deductions	\$0	\$0	\$0	\$0	\$0	\$0	\$0	\$0
Total Cost of Electric Service	\$9,292,190	\$9,471,602	\$9,861,062	-\$389,460	\$2,158,954	\$2,358,080	\$2,296,470	\$61,610
Patronage Capital & Operating Margins	\$1,058,142	\$761,060	\$469,474	\$291,586	\$326,982	\$390,919	\$112,267	\$278,652
Non Operating Margins - Interest	\$7,227	\$7,303	\$7,400	-\$97	\$1,782	\$1,809	\$1,850	-\$41
Allowance for Funds Used During Const.	\$0	\$0	\$0	\$0	\$0	\$0	\$0	\$0
Non Operating Margins - Other	\$2,043	\$1,285	\$0	\$1,285	\$620	\$191	\$0	\$191
Generation & Transmission Cap. Credits	\$0	\$0	\$0	\$0	\$0	\$0	\$0	\$0
Other Cap. Credits & Patronage Divid.	\$176	-\$8,412	\$0	-\$8,412	\$0	\$0	\$0	\$0
Extraordinary Items	\$0	\$0	\$0	\$0	\$0	\$0	\$0	\$0
Patronage Capital or Margins	\$1,067,591	\$760,697	\$476,874	\$283,823	\$329,384	\$392,919	\$114,117	\$278,802

Steuben County REMC

Monthly Operating Report

Apr-26

This Month

Apr-26

Apr-26

Budget

Variance

Operating Revenue	\$2,485,936	\$2,748,999	\$2,408,737	\$340,262
Kwh Sold	17,440,420	19,332,424	0	19,332,424
Cost of Purchased Power	\$1,224,217	\$1,404,547	\$1,295,869	\$108,678
Kwh Purchased	17,107,057	17,565,588	0	17,565,588
Distribution Expense - Operations	\$55,245	\$25,119	\$57,120	-\$32,001
Distribution Expense - Maintenance	\$132,729	\$83,653	\$137,314	-\$53,661
Consumer Accounts Expense	\$41,141	\$40,553	\$44,659	-\$4,106
Consumer Services & Info Exp.	\$1,503	\$5,021	\$15,019	-\$9,998
Sales Expense	\$5,690	\$14,704	\$6,359	\$8,345
Administrative & General Expense	\$253,214	\$324,932	\$275,727	\$49,205
Total Operation & Maintenance Exp.	\$1,713,739	\$1,898,527	\$1,832,067	\$66,460
Depreciation & Amortization Exp.	\$243,399	\$256,220	\$259,284	-\$3,064
Tax Expense - Property	\$11,000	\$12,000	\$12,000	\$0
Tax Expense - Other	\$0	\$0	\$0	\$0
Interest on Long Term Debt	\$190,815	\$191,333	\$193,119	-\$1,786
Interest Charged to Construction(credit)	\$0	\$0	\$0	\$0
Interest Expense Other	\$0	\$0	\$0	\$0
Other Deductions	\$0	\$0	\$0	\$0
Total Cost of Electric Service	\$2,158,954	\$2,358,080	\$2,296,470	\$61,610
Patronage Capital & Operating Margins	\$326,982	\$390,919	\$112,267	\$278,652
Non Operating Margins - Interest	\$1,782	\$1,809	\$1,850	-\$41
Allowance for Funds Used During Const.	\$0	\$0	\$0	\$0
Non Operating Margins - Other	\$620	\$191	\$0	\$191
Generation & Transmission Cap. Credits	\$0	\$0	\$0	\$0
Other Cap. Credits & Patronage Divid.	\$0	\$0	\$0	\$0
Extraordinary Items	\$0	\$0	\$0	\$0
Patronage Capital or Margins	\$329,384	\$392,919	\$114,117	\$278,802

Steuben County REMC

Monthly Operating Report

	Year to Date			Apr-26
	Last Year	This Year	Budget	Variance
	Operating Revenue	\$10,350,332	\$10,232,662	\$10,330,536
Kwh Sold	73,453,553	70,639,435	0	70,639,435
Cost of Purchased Power	\$5,600,483	\$5,532,084	\$5,720,406	-\$188,322
Kwh Purchased	74,181,207	70,714,240	0	70,714,240
Distribution Expense - Operations	\$239,501	\$173,682	\$235,308	-\$61,626
Distribution Expense - Maintenance	\$481,059	\$474,811	\$572,142	-\$97,331
Consumer Accounts Expense	\$157,912	\$168,385	\$184,594	-\$16,209
Consumer Services & Info Exp.	\$26,369	\$26,848	\$66,324	-\$39,476
Sales Expense	\$42,480	\$45,660	\$29,612	\$16,048
Administrative & General Expense	\$979,724	\$1,206,902	\$1,199,842	\$7,060
Total Operation & Maintenance Exp.	\$7,527,529	\$7,628,372	\$8,008,228	-\$379,856
Depreciation & Amortization Exp.	\$967,453	\$1,028,079	\$1,035,413	-\$7,334
Tax Expense - Property	\$44,000	\$48,000	\$48,000	\$0
Tax Expense - Other	\$0	\$0	\$2,303	-\$2,303
Interest on Long Term Debt	\$753,208	\$767,120	\$767,118	\$2
Interest Charged to Construction(credit)	\$0	\$0	\$0	\$0
Interest Expense Other	\$0	\$0	\$0	\$0
Other Deductions	\$0	\$0	\$0	\$0
Total Cost of Electric Service	\$9,292,190	\$9,471,602	\$9,861,062	-\$389,460
Patronage Capital & Operating Margins	\$1,058,142	\$761,060	\$469,474	\$291,586
Non Operating Margins - Interest	\$7,227	\$7,303	\$7,400	-\$97
Allowance for Funds Used During Const	\$0	\$0	\$0	\$0
Non Operating Margins - Other	\$2,043	\$1,285	\$0	\$1,285
Generation & Transmission Cap. Credits	\$0	\$0	\$0	\$0
Other Cap. Credits & Patronage Divid.	\$176	-\$8,412	\$0	-\$8,412
Extraordinary Items	\$0	\$0	\$0	\$0
Patronage Capital or Margins	\$1,067,591	\$760,697	\$476,874	\$283,823

Monthly Operating Report Fiber

	Year to Date			Apr-26		This Month		
	Last Year	This Year	Budget	Variance	Apr-26	Apr-26	Budget	Variance
Operating Revenue	\$737,580	\$1,502,290	\$1,442,529	\$59,761	\$310,387	\$375,273	\$366,118	\$9,155
Distribution Expense - Operations	\$8,152	\$18,032	\$19,197	-\$1,165	\$8,297	\$4,548	\$4,805	-\$257
Distribution Expense - Maintenance	\$30,018	\$79,510	\$65,055	\$14,455	\$26,411	\$8,176	\$15,820	-\$7,644
Consumer Accounts Expense	-\$877	-\$1,096	\$4,000	-\$5,096	\$439	-\$219	\$1,000	-\$1,219
Consumer Services & Info Exp.	\$0	\$0	\$0	\$0	\$0	\$0	\$0	\$0
Sales Expense	\$0	\$0	\$0	\$0	\$0	\$0	\$0	\$0
Administrative & General Expense	\$101,800	\$243,760	\$273,121	-\$29,361	\$35,043	\$60,583	\$70,382	-\$9,799
Total Operation & Maintenance Exp.	\$139,093	\$340,205	\$361,373	-\$21,168	\$70,188	\$73,088	\$92,007	-\$18,919
Depreciation & Amortization Exp.	\$258,120	\$548,441	\$552,820	-\$4,379	\$105,782	\$137,113	\$138,205	-\$1,092
Tax Expense - Property	\$0	\$0	\$0	\$0	\$6,500	\$0	\$0	\$0
Tax Expense - Other	\$0	\$0	\$0	\$0	\$0	\$0	\$0	\$0
Interest on Long Term Debt	\$281,258	\$452,320	\$582,225	-\$129,905	\$104,313	\$147,120	\$147,119	\$1
Interest Charged to Construction(credit)	\$0	\$0	\$0	\$0	\$0	\$0	\$0	\$0
Interest Expense Other	\$0	\$0	\$0	\$0	\$0	\$0	\$0	\$0
Other Deductions	\$0	\$0	\$0	\$0	\$0	\$0	\$0	\$0
Total Cost of Broadband Service	\$678,465	\$1,471,767	\$1,496,418	-\$24,651	\$286,783	\$357,320	\$377,331	-\$20,011
Patronage Capital & Operating Margins	\$59,116	\$30,524	-\$53,889	\$84,413	\$23,604	\$17,952	-\$11,213	\$29,165
Non Operating Margins - Interest	\$0	\$0	\$0	\$0	\$0	\$0	\$0	\$0
Allowance for Funds Used During Const.	\$0	\$0	\$0	\$0	\$0	\$0	\$0	\$0
Non Operating Margins - Other	\$0	\$0	\$0	\$0	\$0	\$0	\$0	\$0
Generation & Transmission Cap. Credits	\$0	\$0	\$0	\$0	\$0	\$0	\$0	\$0
Other Cap. Credits & Patronage Divid.	\$0	\$0	\$0	\$0	\$0	\$0	\$0	\$0
Extraordinary Items	\$0	\$0	\$0	\$0	\$0	\$0	\$0	\$0
Patronage Capital or Margins	\$59,116	\$30,524	-\$42,720	\$73,243	\$23,604	\$17,952	-\$11,213	\$29,165

	Monthly Operating Report			
	Apr-26		This Month	
	Apr-26	Apr-26	Budget	Variance
Operating Revenue	\$310,387	\$375,273	\$366,118	\$9,155
Distribution Expense - Operations	\$8,297	\$4,548	\$4,805	-\$257
Distribution Expense - Maintenance	\$26,411	\$8,176	\$15,820	-\$7,644
Consumer Accounts Expense	\$439	-\$219	\$1,000	-\$1,219
Consumer Services & Info Exp.	\$0	\$0	\$0	\$0
Sales Expense	\$0	\$0	\$0	\$0
Administrative & General Expense	\$35,043	\$60,583	\$70,382	-\$9,799
Total Operation & Maintenance Exp.	\$70,188	\$73,088	\$92,007	-\$18,919
Depreciation & Amortization Exp.	\$105,782	\$137,113	\$138,205	-\$1,092
Tax Expense - Property	\$6,500	\$0	\$0	\$0
Tax Expense - Other	\$0	\$0	\$0	\$0
Interest on Long Term Debt	\$104,313	\$147,120	\$147,119	\$1
Interest Charged to Construction(credit)	\$0	\$0	\$0	\$0
Interest Expense Other	\$0	\$0	\$0	\$0
Other Deductions	\$0	\$0	\$0	\$0
Total Cost of Broadband Service	\$286,783	\$357,320	\$377,331	-\$20,011
Patronage Capital & Operating Margins	\$23,604	\$17,952	-\$11,213	\$29,165
Non Operating Margins - Interest	\$0	\$0	\$0	\$0
Allowance for Funds Used During Const.	\$0	\$0	\$0	\$0
Non Operating Margins - Other	\$0	\$0	\$0	\$0
Generation & Transmission Cap. Credits	\$0	\$0	\$0	\$0
Other Cap. Credits & Patronage Divid.	\$0	\$0	\$0	\$0
Extraordinary Items	\$0	\$0	\$0	\$0
Patronage Capital or Margins	\$23,604	\$17,952	-\$11,213	\$29,165

Steuben County REMC

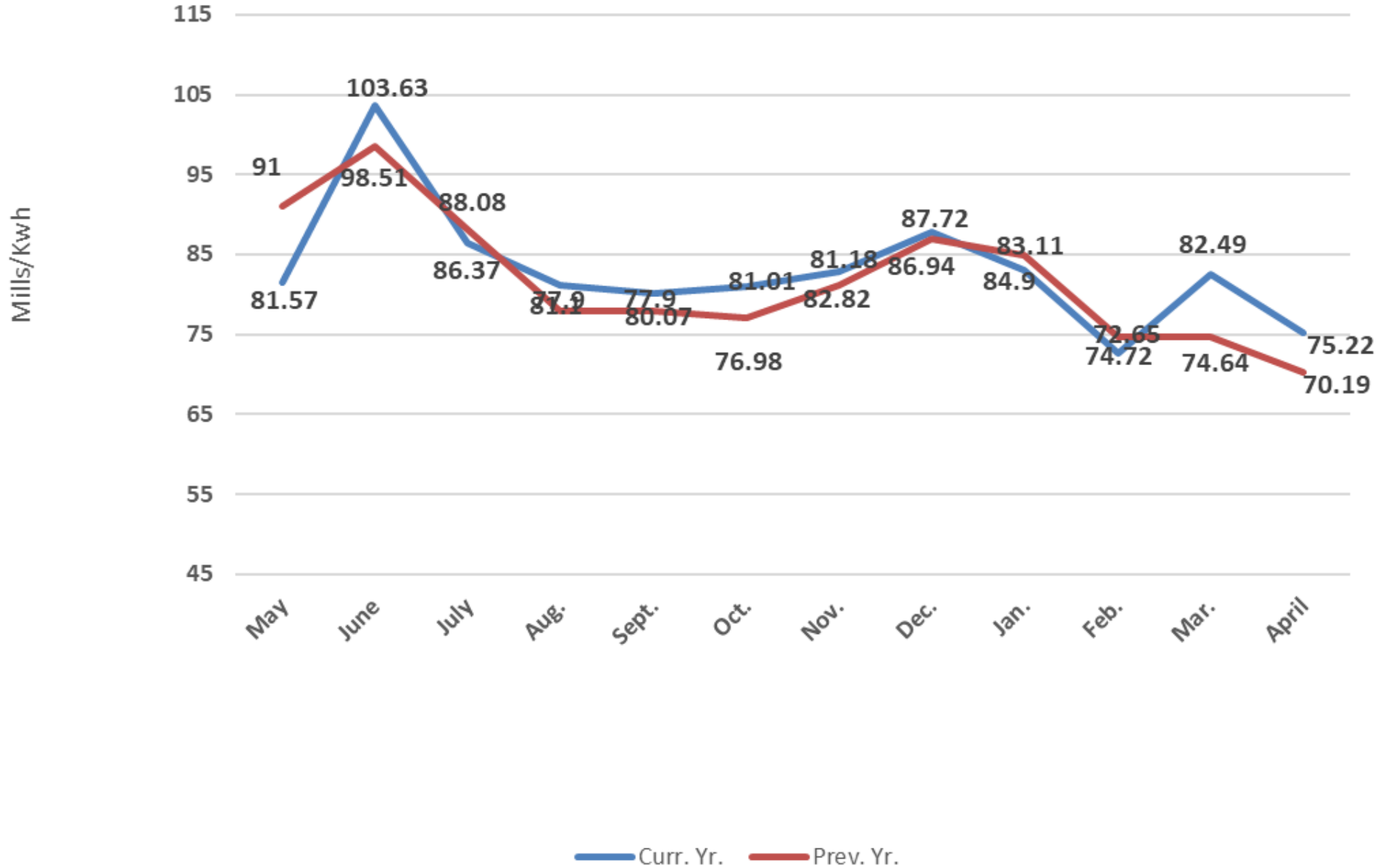
Monthly Operating Report

Year to Date

Apr-26

	Last Year	This Year	Budget	Variance
Operating Revenue	\$737,580	\$1,502,290	\$1,442,529	\$59,761
Distribution Expense - Operations	\$8,152	\$18,032	\$19,197	-\$1,165
Distribution Expense - Maintenance	\$30,018	\$79,510	\$65,055	\$14,455
Consumer Accounts Expense	-\$877	-\$1,096	\$4,000	-\$5,096
Consumer Services & Info Exp.	\$0	\$0	\$0	\$0
Sales Expense	\$0	\$0	\$0	\$0
Administrative & General Expense	\$101,800	\$243,760	\$273,121	-\$29,361
Total Operation & Maintenance Exp.	\$139,093	\$340,205	\$361,373	-\$21,168
Depreciation & Amortization Exp.	\$258,120	\$548,441	\$552,820	-\$4,379
Tax Expense - Property	\$0	\$0	\$0	\$0
Tax Expense - Other	\$0	\$0	\$0	\$0
Interest on Long Term Debt	\$281,258	\$452,320	\$582,225	-\$129,905
Interest Charged to Construction(credit)	\$0	\$0	\$0	\$0
Interest Expense Other	\$0	\$0	\$0	\$0
Other Deductions	\$0	\$0	\$0	\$0
Total Cost of Broadband Service	\$678,465	\$1,471,767	\$1,496,418	-\$24,651
Patronage Capital & Operating Margins	\$59,116	\$30,524	-\$53,889	\$84,413
Non Operating Margins - Interest	\$0	\$0	\$0	\$0
Allowance for Funds Used During Const	\$0	\$0	\$0	\$0
Non Operating Margins - Other	\$0	\$0	\$0	\$0
Generation & Transmission Cap. Credits	\$0	\$0	\$0	\$0
Other Cap. Credits & Patronage Divid.	\$0	\$0	\$0	\$0
Extraordinary Items	\$0	\$0	\$0	\$0
Patronage Capital or Margins	\$59,116	\$30,524	-\$42,720	\$73,243

Power Cost in Mills / Kwh Sold

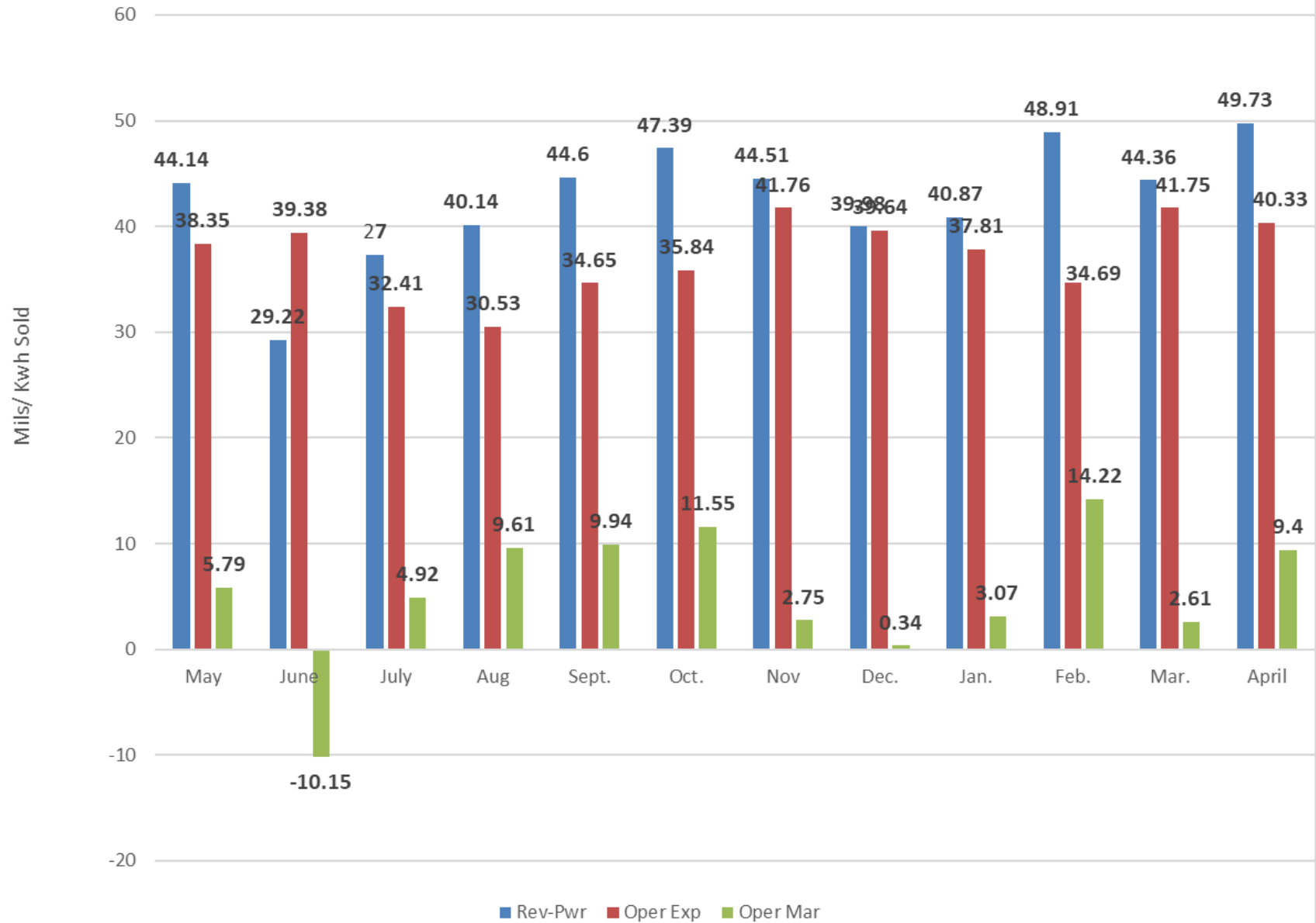


Oper.Exp. in Mills/KWH Sold

O&M Con A&G DP&TX Int

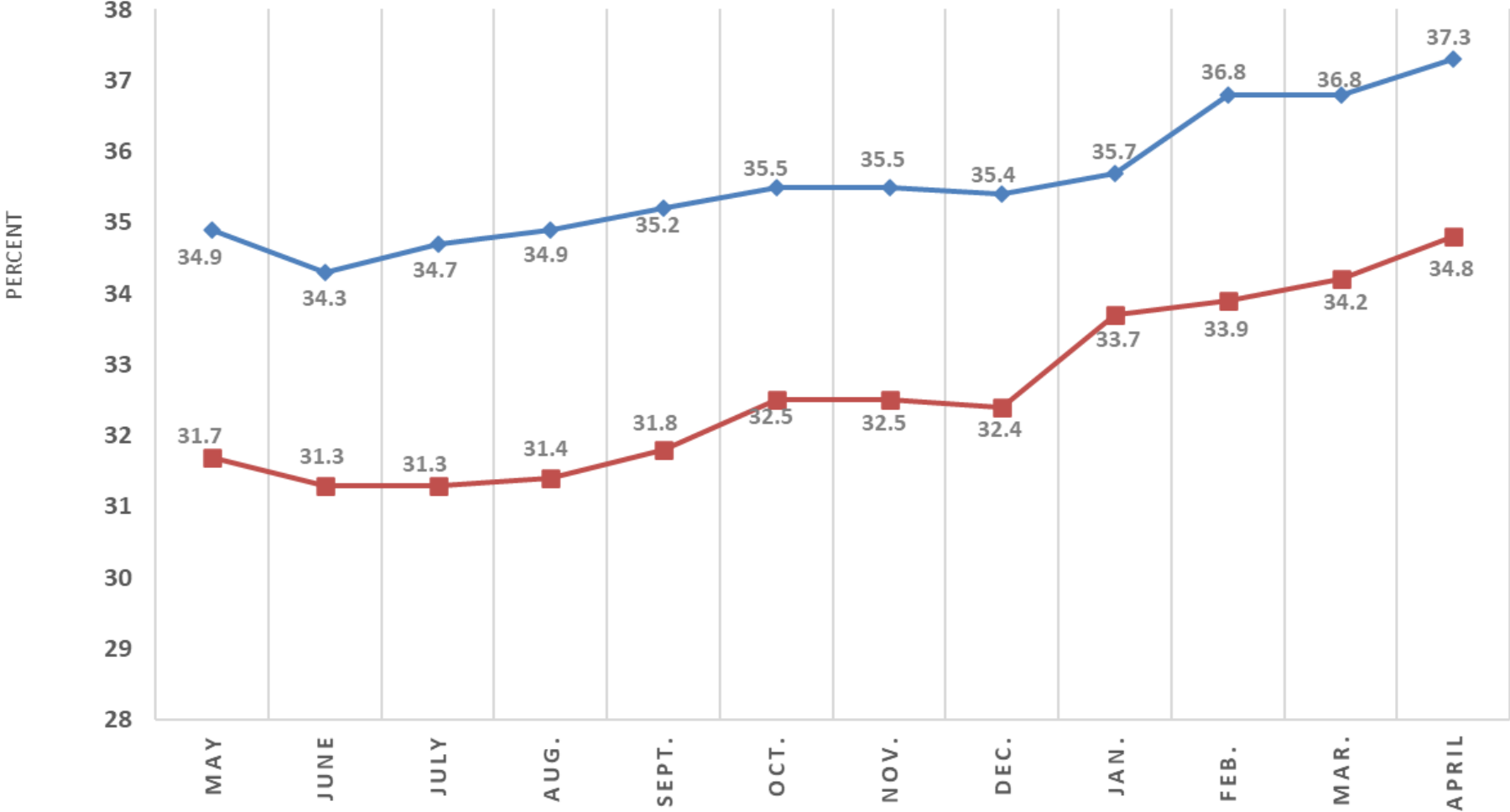


Gross Margin - Oper Exp = Oper Margin

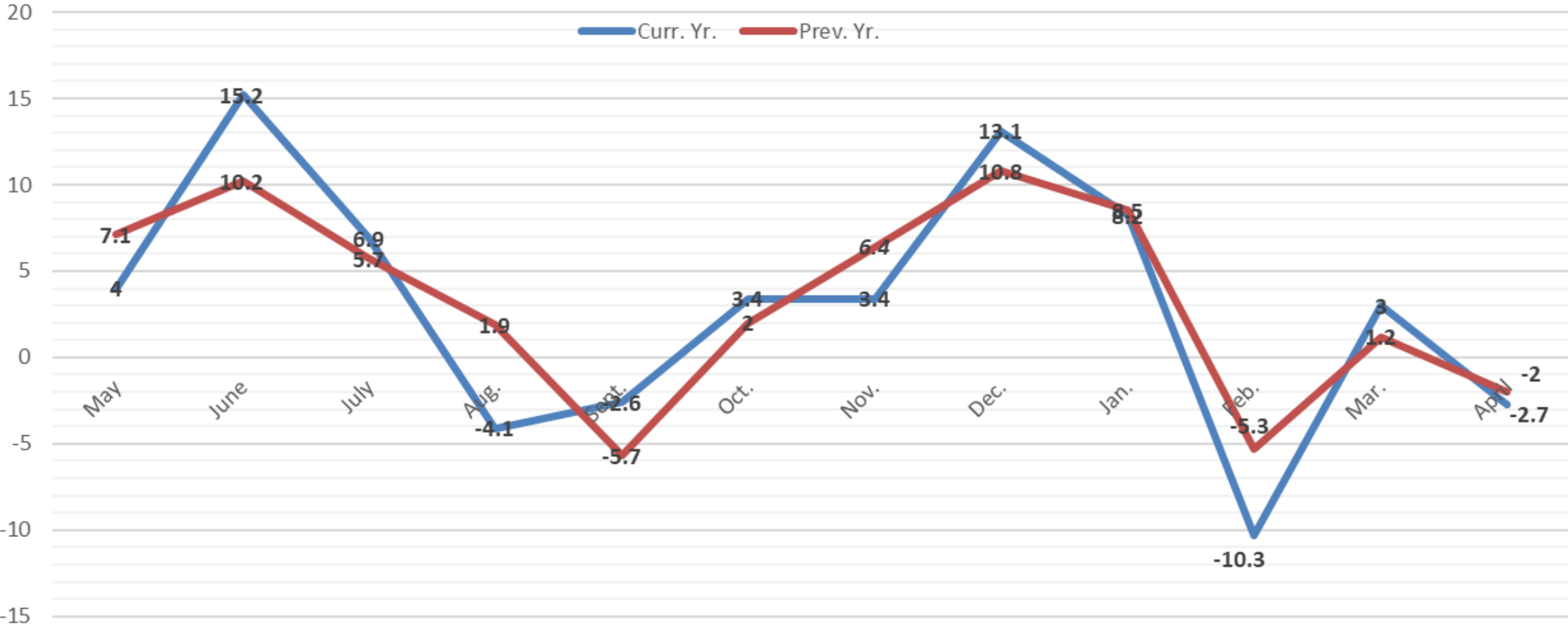


EQUITY AS A % OF TOTAL ASSETS

Series1 Series2



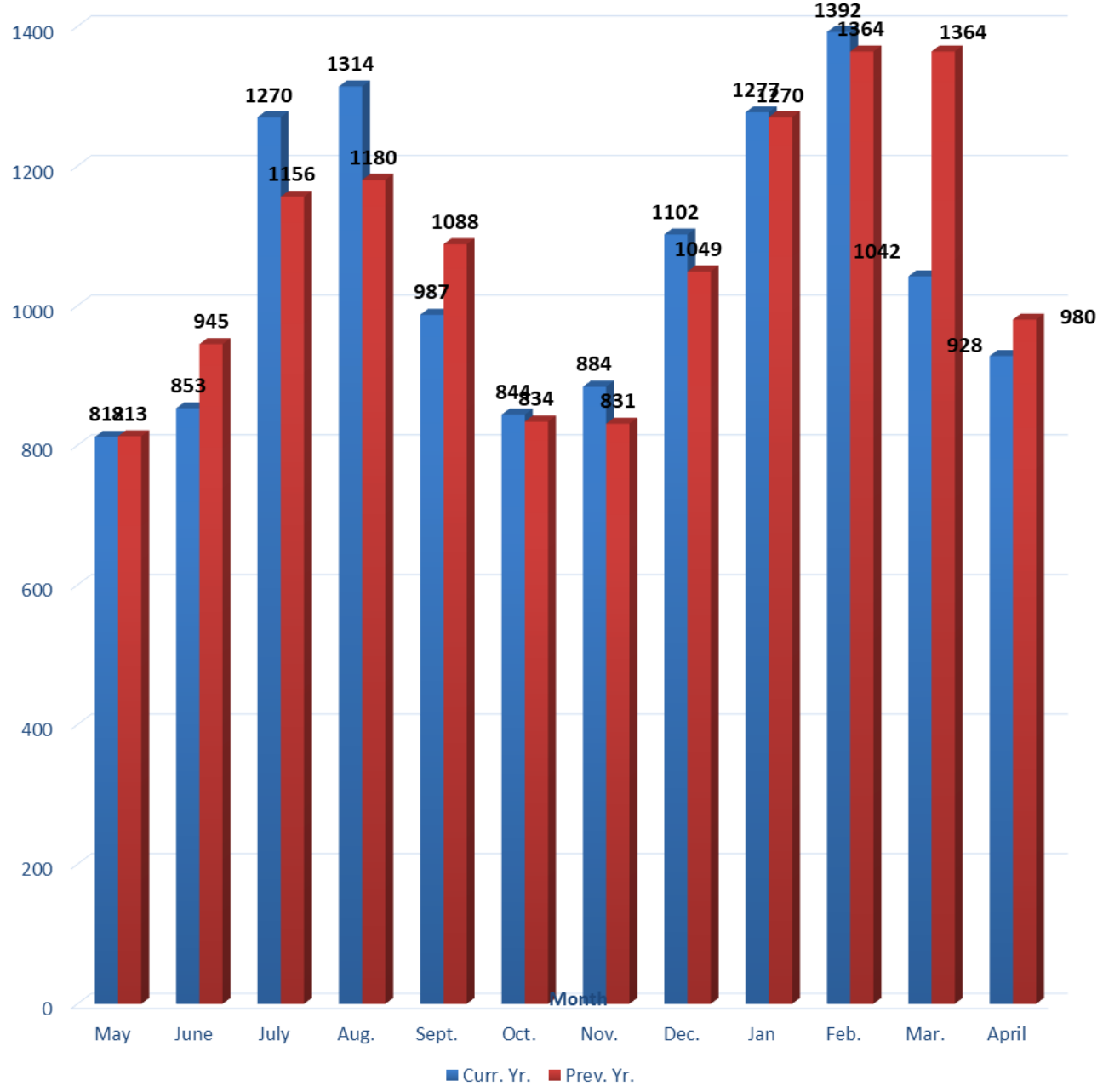
Percent Line Loss



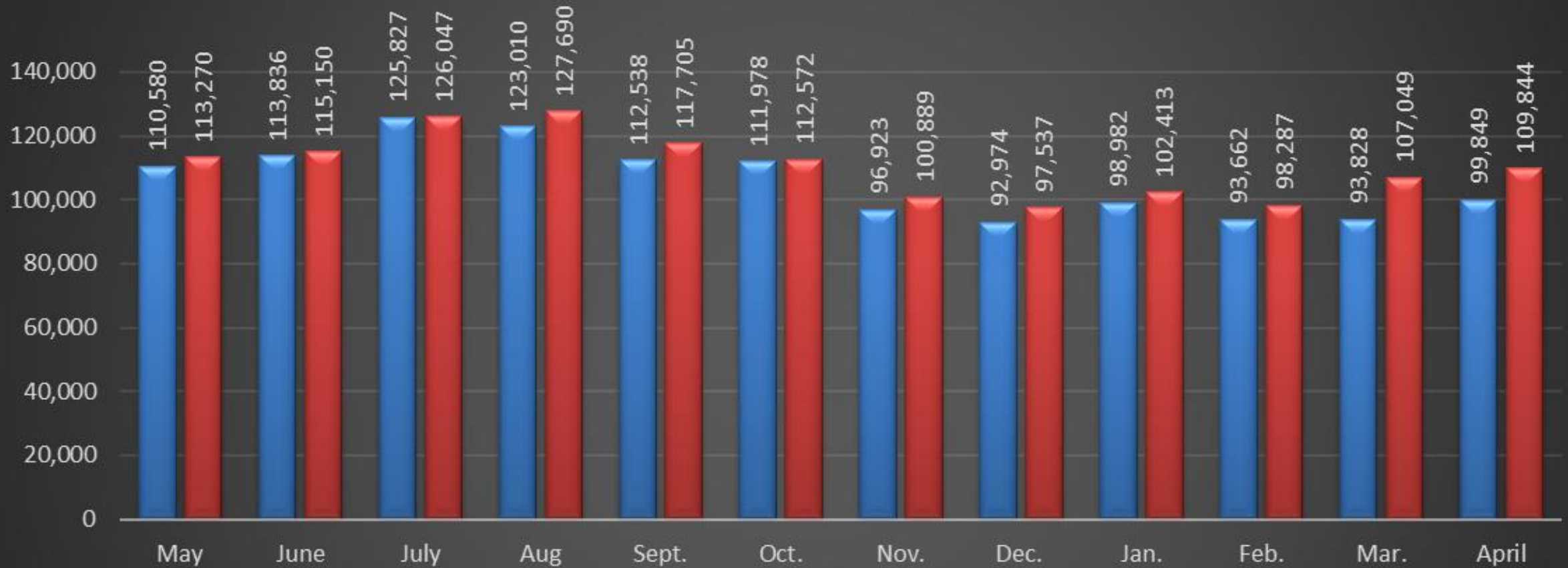
2025 APRIL= 1.2%

2026 APRIL=-3.0%

Average Residential Kwh Consumption



C&I Average Consumption



■ Current Year ■ Last Year

April Cash Balance

4/30/2026

Farmers State Bank-Checking	\$ 27,527.18
Farmers State ACH	\$ 6,510.53
1st. Federal S&L	\$ 357,389.78
Green Data Deposit	\$ 270,000.00
Capital Credits	\$ 11,989.79
Working Fund	\$ 600.00

Total **\$ 674,014.28**

WVPA 2025 Cap Credit	\$ 0.00
WVPA 2024 Cap Credit	\$ 39,149.77
WVPA 2023 Cap Credit	\$ 3,667.90

April 2026 Top 40

ACCOUNT	NAME	METER USAGE	CHARGE AMOUNT
861003	PINE MANOR INC.	1,794,000	151,694.26
238502	COLD HEADING CO	1,133,400	128,383.99
906701	CARDINAL IG	916,800	101,010.03
13713801	FAMILY DOLLAR	750,400	80,278.98
13840801	BRIGHTMARK	505,200	54,481.41
675801	NUCOR BUILDING SYSTEMS	421,200	45,769.17
641005	VENTRA ANGOLA, LLC	261,600	32,899.47
13851400	TRUECORE LLC	267,000	29,719.34
945001	719500 MEIJER, MAIL STOP #4	270,960	29,383.03
930100	VESTIL MANUFACTURING CORP	230,100	27,514.35
1051700	MENARD INC	139,080	17,505.00
955101	DIVERSIFIED COATING	151,120	17,010.18
1041901	TECHO-BLOC MIDWEST CORP	131,480	14,756.60
709101	MSD OF STEUBEN COUNTY	103,200	13,602.95
1057401	STEUBEN LAKES REGIONAL	99,360	10,541.57
13720901	STONECO	51,300	7,527.13
907101	METAL SPINNERS	55,000	7,250.85
943000	YMCA OF STEUBEN COUNTY INC	64,720	7,139.55
975900	MSD OF STEUBEN COUNTY	46,800	7,023.70
1037601	FED EX FREIGHT EAST INC	61,440	6,646.08
762102	HANSON AGGREGATES INC SITE 562	39,520	6,619.16
24201	SUN NG JELLY BARTON LAKE RV LL	58,200	6,376.20
700802	CPG OHIO LLC	46,800	6,078.30
100001	CON-WAY CENTRAL EXPRESS	53,800	6,020.15
876703	VESTIL MANUFACTURING CORP	45,440	6,017.87
956205	HIGH POINT HEIFERS LLC	45,040	5,507.19
530302	LV Petroleum LLC	48,240	5,231.79
527800	TOWN OF FREMONT	45,280	4,917.14
13610000	API CONSTRUCTION CORP	18,480	4,489.62
1042001	OLD CASTLE LAWN & GARDEN	35,800	4,397.63
13821000	VESTIL MANUFACTURING CORP	35,160	4,272.65
617702	CPG OHIO LLC	39,400	4,259.21
13825301	WINGATE ANGOLA	37,800	4,142.34
13751901	ANGOLA HOGBACK LAKE KOA	32,400	3,673.51
786101	JICI	25,800	3,561.79
1038600	GLENDARIN HILLS GOLF CLUB	28,640	3,389.14
63800	BUNCH SHOP RITE MARKET	30,480	3,234.97
1000202	RMH FRANCHISE	27,720	3,194.93
712500	EMF CORPORATION	23,900	3,134.61
946503	STOOPS FREIGHTLINER	28,000	3,089.26
	April Totals	8,200,060	\$ 881,745.10
	March Totals	7,947,538	\$ 843,720.06



REGULAR BOARD OF DIRECTORS MEETING

STEUBEN COUNTY REMC

AGENDA

May 26, 2026 at 6:00pm

Outage Report

SAIDI (System Average Interruption Duration Index)

SAIDI = (Sum of all customer interruption durations) / (Total number of customers served)

March Outage Report

Monthly SAIDI Score	Annual SAIDI Score	Total Monthly Outages	Total Members Affected this Month	Y to D Members Affected	Avg. Number of Members
38.9	75.2	458	4680	7033	10828

Top 3 Monthly Cause	Duration	Members Affected
<i>Equipment Failure</i>	4/13 14:52-15:47PM	391
<i>High Wind/Trees</i>	4/27 17:26-22:39pm	114
<i>NIPCO Transmission</i>	4/28 00:56-02:23am	3746

April		Year-to-Date	
2026	Hours	2026	Hours
	7011.12		12237.09

Last Year's Outage Hours			
April		Year-to-Date	
	786.37		14865.14

Monthly Outage Highlights

The Equipment Failure on April 13th was a Bad Regulator at 100N & 450W this was a SAIDI Score of 1.98

NIPSCO Transmission outage on April 28th affected Orland, Nevada, and Orland Metering Point. Our Crews backfed the subs and our members were back on in 87 minutes. This outage was a SAIDI Score of 30.19

