

Agenda

Steuben County REMC
Regular Board of Directors Meeting
September 29, 2025

1. Call to Order
2. Roll Call
3. General Consent Items
 - a. Agenda
 - b. Minutes of August 25, 2025 Board Meeting
 - c. Bills
 - d. Director Expenses
 - e. New Hookups
 - f. New Memberships
 - g. IUPPS Update
4. Informative Reports
 - a. CEO Financial Report
 - b. Re-Comm Update
 - c. Operation Round Up
 - d. Safety Meeting
 - e. WVPA Board Meeting
 - f. Member Services Report
 - g. Cyber Security
 - h. Broadband Update
 - i. NRECA Regional Meeting Review
 - j. Director Per Diem
 - k.
5. Executive Session
 - a. Wage & Benefit Report- Labor Committee
 - b. CEO Search
6. Decisions Needed
 - a.
7. Corporate Council Report
 - a.
8. Other Business
9. Calendar & Announcements
 - a. Next Regular Meeting October 27, 2025
10. Adjournment

Steuben County REMC

Monthly Operating Report

Aug-25

Year to Date

This Month

	Last year	This Year	Budget	Variance	Last Year	This Year	Budget	Variance
Operating Revenue	\$20,235,528	\$21,270,379	\$21,826,827	-\$556,448	\$2,915,880	\$2,998,157	\$3,245,657	-\$247,500
Kwh Sold	147,425,321	151,026,960	152,728,249	-1,701,289	21,223,147	22,130,601	23,343,873	-1,213,272
Cost of Purchased Power	\$12,634,924	\$12,400,931	\$12,448,087	-\$47,156	\$1,859,954	\$1,794,758	\$1,822,587	-\$27,829
Kwh Purchased	154,043,972	156,322,297	157,472,226	-1,149,929	21,651,573	21,276,356	23,846,122	-2,569,766
Distribution Expense - Operations	\$498,328	\$515,752	\$512,058	\$3,694	\$55,562	\$43,739	\$65,478	-\$21,739
Distribution Expense - Maintenance	\$902,931	\$929,823	\$1,090,081	-\$160,258	\$109,866	\$103,879	\$137,089	-\$33,210
Consumer Accounts Expense	\$293,701	\$311,463	\$352,235	-\$40,772	\$37,971	\$37,278	\$45,150	-\$7,872
Consumer Services & Info Exp.	\$101,217	\$101,096	\$163,313	-\$62,217	\$19,836	\$19,598	\$27,910	-\$8,312
Sales Expense	\$70,404	\$76,977	\$73,793	\$3,184	\$11,628	\$13,131	\$9,547	\$3,584
Administrative & General Expense	\$2,048,063	\$1,983,350	\$2,213,146	-\$229,796	\$232,554	\$242,698	\$262,774	-\$20,076
Total Operation & Maintenance Exp.	\$16,549,568	\$16,319,392	\$16,852,713	-\$533,321	\$2,327,372	\$2,255,082	\$2,370,535	-\$115,453
Depreciation & Amortization Exp.	\$1,666,905	\$1,953,115	\$1,952,356	\$759	\$226,370	\$247,580	\$246,030	\$1,550
Tax Expense - Property	\$125,600	\$88,000	\$160,000	-\$72,000	\$15,700	\$11,000	\$20,000	-\$9,000
Tax Expense - Other	\$27	\$0	\$2,482	-\$2,482	\$0	\$0	\$0	\$0
Interest on Long Term Debt	\$1,221,535	\$1,530,737	\$1,530,738	-\$1	\$168,773	\$196,508	\$196,508	\$0
Interest Charged to Construction(credit)	\$0	\$0	\$0	\$0	\$0	\$0	\$0	\$0
Interest Expense Other	\$0	\$0	\$0	\$0	\$0	\$0	\$0	\$0
Other Deductions	\$0	\$0	\$0	\$0	\$0	\$0	\$0	\$0
Total Cost of Electric Service	\$19,563,635	\$19,891,244	\$20,498,289	-\$607,045	\$2,738,215	\$2,710,169	\$2,833,073	-\$122,904
Patronage Capital & Operating Margins	\$671,893	\$1,379,135	\$1,328,538	\$50,597	\$177,666	\$287,987	\$412,584	-\$124,597
Non Operating Margins - Interest	\$14,555	\$14,495	\$14,800	-\$305	\$1,817	\$1,811	\$1,850	-\$39
Allowance for Funds Used During Const.	-\$350	\$0	\$0	\$0	\$0	\$0	\$0	\$0
Non Operating Margins - Other	\$1,712	\$2,939	\$0	\$2,939	\$231	\$224	\$0	\$224
Generation & Transmission Cap. Credits	\$0	\$0	\$0	\$0	\$0	\$0	\$0	\$0
Other Cap. Credits & Patronage Divid.	\$22,356	\$8,699	\$20,600	-\$11,901	\$0	\$0	\$20,000	-\$20,000
Extraordinary Items	\$0	\$0	\$0	\$0	\$0	\$0	\$0	\$0
Patronage Capital or Margins	\$710,166	\$1,405,268	\$1,363,938	\$41,330	\$179,714	\$290,022	\$434,434	-\$144,412

	Steuben County REMC			
	Monthly Operating Report			
	Aug-25		This Month	
	Last year	This Year	Budget	Variance
Operating Revenue	\$2,915,880	\$2,998,157	\$3,245,657	-\$247,500
Kwh Sold	21,223,147	22,130,601	23,343,873	-1,213,272
Cost of Purchased Power	\$1,859,954	\$1,794,758	\$1,822,587	-\$27,829
Kwh Purchased	21,651,573	21,276,356	23,846,122	-2,569,766
Distribution Expense - Operations	\$55,562	\$43,739	\$65,478	-\$21,739
Distribution Expense - Maintenance	\$109,866	\$103,879	\$137,089	-\$33,210
Consumer Accounts Expense	\$37,971	\$37,278	\$45,150	-\$7,872
Consumer Services & Info Exp.	\$19,836	\$19,598	\$27,910	-\$8,312
Sales Expense	\$11,628	\$13,131	\$9,547	\$3,584
Administrative & General Expense	\$232,554	\$242,698	\$262,774	-\$20,076
Total Operation & Maintenance Exp.	\$2,327,372	\$2,255,082	\$2,370,535	-\$115,453
Depreciation & Amortization Exp.	\$226,370	\$247,580	\$246,030	\$1,550
Tax Expense - Property	\$15,700	\$11,000	\$20,000	-\$9,000
Tax Expense - Other	\$0	\$0	\$0	\$0
Interest on Long Term Debt	\$168,773	\$196,508	\$196,508	\$0
Interest Charged to Construction(credit)	\$0	\$0	\$0	\$0
Interest Expense Other	\$0	\$0	\$0	\$0
Other Deductions	\$0	\$0	\$0	\$0
Total Cost of Electric Service	\$2,738,215	\$2,710,169	\$2,833,073	-\$122,904
Patronage Capital & Operating Margins	\$177,666	\$287,987	\$412,584	-\$124,597
Non Operating Margins - Interest	\$1,817	\$1,811	\$1,850	-\$39
Allowance for Funds Used During Const.	\$0	\$0	\$0	\$0
Non Operating Margins - Other	\$231	\$224	\$0	\$224
Generation & Transmission Cap. Credits	\$0	\$0	\$0	\$0
Other Cap. Credits & Patronage Divid.	\$0	\$0	\$20,000	-\$20,000
Extraordinary Items	\$0	\$0	\$0	\$0
Patronage Capital or Margins	\$179,714	\$290,022	\$434,434	-\$144,412

	Steuben County REMC			
	Monthly Operating Report			
	Year to Date			Aug-25
	Last Year	This Year	Budget	Variance
Operating Revenue	\$20,235,528	\$21,270,379	\$21,826,827	-\$556,448
Kwh Sold	147,425,321	151,026,960	152,728,249	-1,701,289
Cost of Purchased Power	\$12,634,924	\$12,400,931	\$12,448,087	-\$47,156
Kwh Purchased	154,043,972	156,322,297	157,472,226	-1,149,929
Distribution Expense - Operations	\$498,328	\$515,752	\$512,058	\$3,694
Distribution Expense - Maintenance	\$902,931	\$929,823	\$1,090,081	-\$160,258
Consumer Accounts Expense	\$293,701	\$311,463	\$352,235	-\$40,772
Consumer Services & Info Exp.	\$101,217	\$101,096	\$163,313	-\$62,217
Sales Expense	\$70,404	\$76,977	\$73,793	\$3,184
Administrative & General Expense	\$2,048,063	\$1,983,350	\$2,213,146	-\$229,796
Total Operation & Maintenance Exp.	\$16,549,568	\$16,319,392	\$16,852,713	-\$533,321
Depreciation & Amortization Exp.	\$1,666,905	\$1,953,115	\$1,952,356	\$759
Tax Expense - Property	\$125,600	\$88,000	\$160,000	-\$72,000
Tax Expense - Other	\$27	\$0	\$2,482	-\$2,482
Interest on Long Term Debt	\$1,221,535	\$1,530,737	\$1,530,738	-\$1
Interest Charged to Construction(credit)	\$0	\$0	\$0	\$0
Interest Expense Other	\$0	\$0	\$0	\$0
Other Deductions	\$0	\$0	\$0	\$0
Total Cost of Electric Service	\$19,563,635	\$19,891,244	\$20,498,289	-\$607,045
Patronage Capital & Operating Margins	\$671,893	\$1,379,135	\$1,328,538	\$50,597
Non Operating Margins - Interest	\$14,555	\$14,495	\$14,800	-\$305
Allowance for Funds Used During Const.	-\$350	\$0	\$0	\$0
Non Operating Margins - Other	\$1,712	\$2,939	\$0	\$2,939
Generation & Transmission Cap. Credits	\$0	\$0	\$0	\$0
Other Cap. Credits & Patronage Divid.	\$22,356	\$8,699	\$20,600	-\$11,901
Extraordinary Items	\$0	\$0	\$0	\$0
Patronage Capital or Margins	\$710,166	\$1,405,268	\$1,363,938	\$41,330

Steuben County REMC

Monthly Operating Report Fiber

	Year to Date			Aug-25	This Month			
	Last Year	This Year	Budget	Variance	Last Year	This Year	Budget	Variance
Operating Revenue	\$2,563,624	\$2,975,534	\$3,132,821	-\$157,287	\$365,302	\$370,327	\$408,445	-\$38,118
Distribution Expense - Operations	\$57,856	\$37,604	\$36,464	\$1,140	\$6,936	\$5,243	\$4,558	\$685
Distribution Expense - Maintenance	\$146,885	\$166,739	\$105,824	\$60,915	\$13,837	\$19,603	\$13,702	\$5,901
Consumer Accounts Expense	-\$3,289	-\$1,480	\$23,736	-\$25,216	-\$439	-\$219	\$3,109	-\$3,328
Consumer Services & Info Exp.	\$0	\$0	\$0	\$0	\$0	\$0	\$0	\$0
Sales Expense	\$0	\$4,295	\$0	\$4,295	\$0	\$0	\$0	\$0
Administrative & General Expense	\$396,204	\$456,613	\$524,919	-\$68,306	\$51,472	\$60,028	\$68,076	-\$8,048
Total Operation & Maintenance Exp.	\$597,654	\$663,771	\$690,943	-\$27,172	\$71,807	\$84,654	\$89,445	-\$4,791
Depreciation & Amortization Exp.	\$825,143	\$1,042,807	\$1,047,427	-\$4,620	\$117,885	\$131,578	\$131,439	\$139
Tax Expense - Property	\$52,000	\$0	\$80,000	-\$80,000	\$6,500	\$0	\$10,000	-\$10,000
Tax Expense - Other	\$0	\$0	\$0	\$0	\$0	\$0	\$0	\$0
Interest on Long Term Debt	\$861,535	\$1,162,737	\$1,162,738	-\$1	\$123,773	\$150,508	\$150,508	\$0
Interest Charged to Construction(credit)	\$0	\$0	\$0	\$0	\$0	\$0	\$0	\$0
Interest Expense Other	\$0	\$0	\$0	\$0	\$0	\$0	\$0	\$0
Other Deductions	\$0	\$0	\$0	\$0	\$0	\$0	\$0	\$0
Total Cost of Electric Service	\$2,336,332	\$2,869,314	\$2,981,108	-\$111,794	\$319,965	\$366,740	\$381,392	-\$14,652
Patronage Capital & Operating Margins	\$227,292	\$106,220	\$151,713	-\$45,493	\$45,337	\$3,587	\$27,053	-\$23,466
Non Operating Margins - Interest	\$0	\$0	\$0	\$0	\$0	\$0	\$0	\$0
Allowance for Funds Used During Const.	\$0	\$0	\$0	\$0	\$0	\$0	\$0	\$0
Non Operating Margins - Other	\$0	\$0	\$0	\$0	\$0	\$0	\$0	\$0
Generation & Transmission Cap. Credits	\$0	\$0	\$0	\$0	\$0	\$0	\$0	\$0
Other Cap. Credits & Patronage Divid.	\$0	\$0	\$0	\$0	\$0	\$0	\$0	\$0
Extraordinary Items	\$0	\$0	\$0	\$0	\$0	\$0	\$0	\$0
Patronage Capital or Margins	\$227,292	\$106,220	\$151,713	-\$45,493	\$45,337	\$3,587	\$27,053	-\$23,466

	Steuben County REMC			
	Monthly Operating Report			
	Aug-25		This Month	
	Last Year	This Year	Budget	Variance
Operating Revenue	\$365,302	\$370,327	\$408,445	-\$38,118
Distribution Expense - Operations	\$6,936	\$5,243	\$4,558	\$685
Distribution Expense - Maintenance	\$13,837	\$19,603	\$13,702	\$5,901
Consumer Accounts Expense	-\$439	-\$219	\$3,109	-\$3,328
Consumer Services & Info Exp.	\$0	\$0	\$0	\$0
Sales Expense	\$0	\$0	\$0	\$0
Administrative & General Expense	\$51,472	\$60,028	\$68,076	-\$8,048
Total Operation & Maintenance Exp.	\$71,807	\$84,654	\$89,445	-\$4,791
Depreciation & Amortization Exp.	\$117,885	\$131,578	\$131,439	\$139
Tax Expense - Property	\$6,500	\$0	\$10,000	-\$10,000
Tax Expense - Other	\$0	\$0	\$0	\$0
Interest on Long Term Debt	\$123,773	\$150,508	\$150,508	\$0
Interest Charged to Construction(credit)	\$0	\$0	\$0	\$0
Interest Expense Other	\$0	\$0	\$0	\$0
Other Deductions	\$0	\$0	\$0	\$0
Total Cost of Electric Service	\$319,965	\$366,740	\$381,392	-\$14,652
Patronage Capital & Operating Margins	\$45,337	\$3,587	\$27,053	-\$23,466
Non Operating Margins - Interest	\$0	\$0	\$0	\$0
Allowance for Funds Used During Const.	\$0	\$0	\$0	\$0
Non Operating Margins - Other	\$0	\$0	\$0	\$0
Generation & Transmission Cap. Credits	\$0	\$0	\$0	\$0
Other Cap. Credits & Patronage Divid.	\$0	\$0	\$0	\$0
Extraordinary Items	\$0	\$0	\$0	\$0
Patronage Capital or Margins	\$45,337	\$3,587	\$27,053	-\$23,466

	Steuben County REMC			
	Monthly Operating Report			
	Year to Date			Aug-25
	Last Year	This Year	Budget	Variance
Operating Revenue	\$2,563,624	\$2,975,534	\$3,132,821	-\$157,287
Distribution Expense - Operations	\$57,856	\$37,604	\$36,464	\$1,140
Distribution Expense - Maintenance	\$146,885	\$166,739	\$105,824	\$60,915
Consumer Accounts Expense	-\$3,289	-\$1,480	\$23,736	-\$25,216
Consumer Services & Info Exp.	\$0	\$0	\$0	\$0
Sales Expense	\$0	\$4,295	\$0	\$4,295
Administrative & General Expense	\$396,204	\$456,613	\$524,919	-\$68,306
Total Operation & Maintenance Exp.	\$597,654	\$663,771	\$690,943	-\$27,172
Depreciation & Amortization Exp.	\$825,143	\$1,042,807	\$1,047,427	-\$4,620
Tax Expense - Property	\$52,000	\$0	\$80,000	-\$80,000
Tax Expense - Other	\$0	\$0	\$0	\$0
Interest on Long Term Debt	\$861,535	\$1,162,737	\$1,162,738	-\$1
Interest Charged to Construction(credit)	\$0	\$0	\$0	\$0
Interest Expense Other	\$0	\$0	\$0	\$0
Other Deductions	\$0	\$0	\$0	\$0
Total Cost of Electric Service	\$2,336,332	\$2,869,314	\$2,981,108	-\$111,794
Patronage Capital & Operating Margins	\$227,292	\$106,220	\$151,713	-\$45,493
Non Operating Margins - Interest	\$0	\$0	\$0	\$0
Allowance for Funds Used During Const.	\$0	\$0	\$0	\$0
Non Operating Margins - Other	\$0	\$0	\$0	\$0
Generation & Transmission Cap. Credits	\$0	\$0	\$0	\$0
Other Cap. Credits & Patronage Divid.	\$0	\$0	\$0	\$0
Extraordinary Items	\$0	\$0	\$0	\$0
Patronage Capital or Margins	\$227,292	\$106,220	\$151,713	-\$45,493

Aug Cash Balance

Farmers State Bank	\$192,708.09
Fifth Third Bank	
1st. Federal S&L	\$277,756.64
Green Data Deposit	\$270,000.00
Capital Credits	\$447,671.18
Working Fund	\$600.00

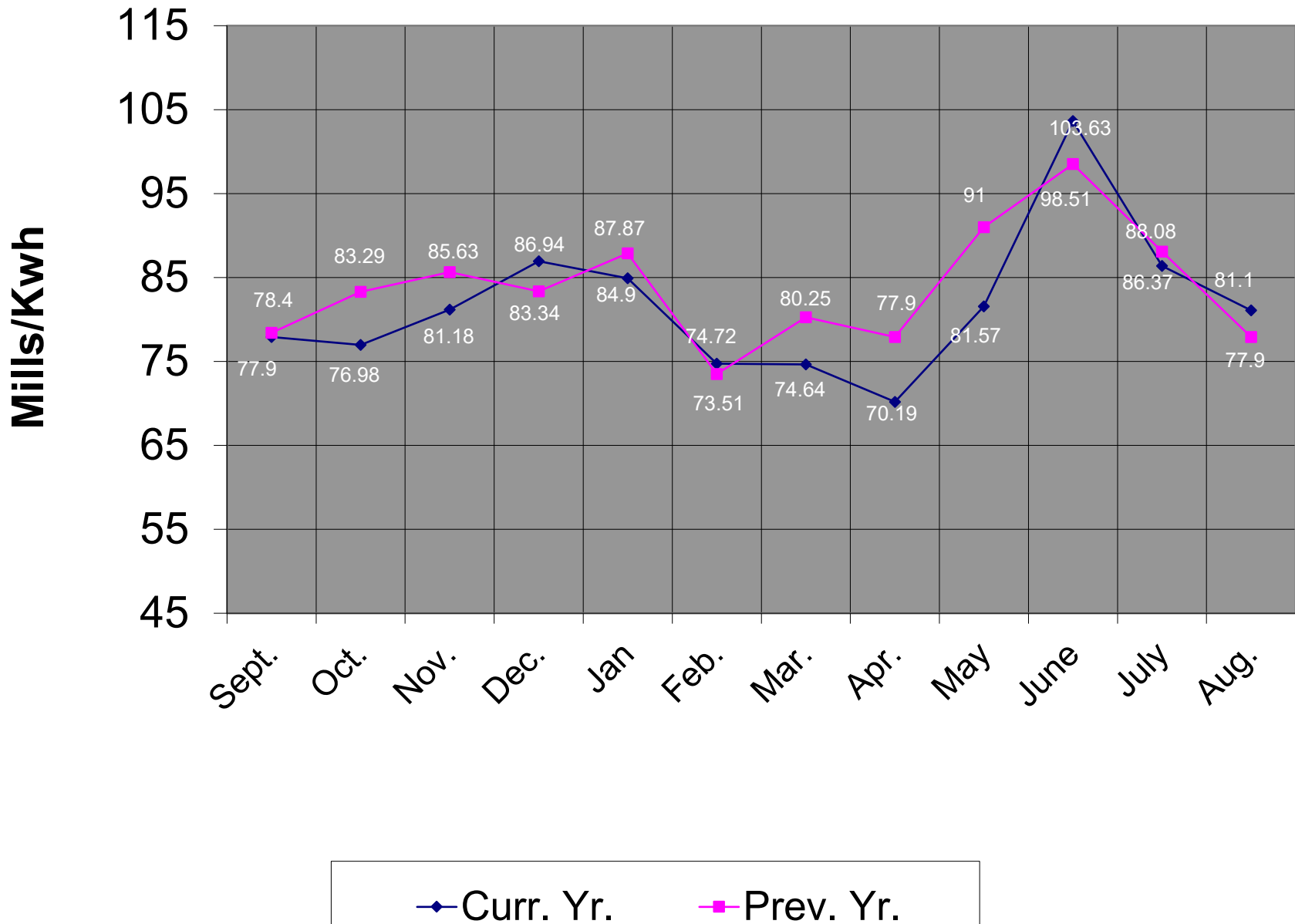
Total	\$1,188,735.91
--------------	-----------------------

WVPA 2023 Cap Credit	\$3,848.12
WVPA 2022 Cap Credit	\$14,098.92
WVPA 2021 Cap Credit	\$5,164.86

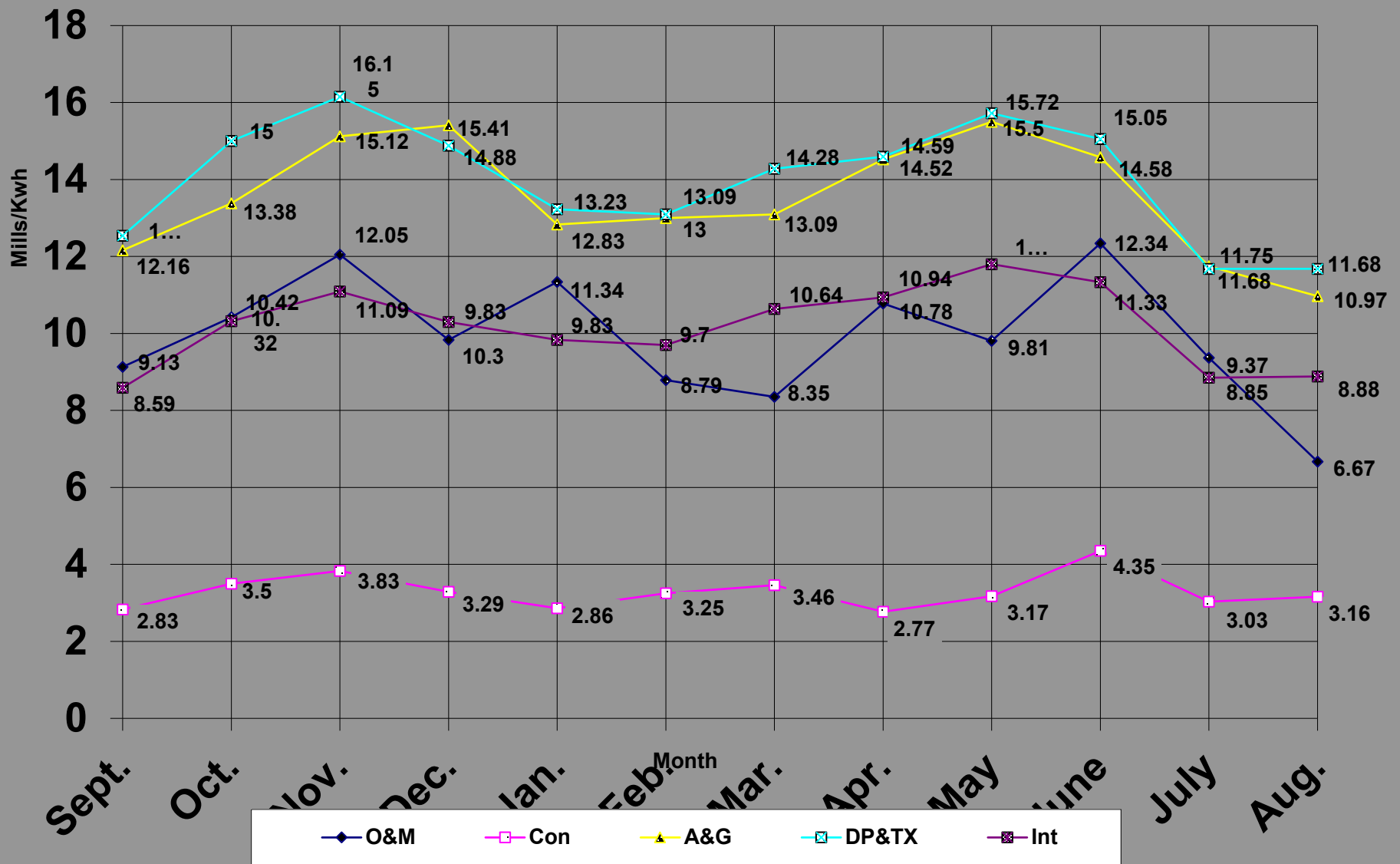
Aug. 2025 Top 40

ACCOUNT	NAME	METER USAGE	CHARGE AMOUNT		
861003	PINE MANOR INC.	2,171,000	181,479.18		
238502	COLD HEADING CO	1,245,600	137,582.60		
906701	CARDINAL IG	1,189,200	111,567.55		
13713801	FAMILY DOLLAR	1,017,100	100,145.73		
13840801	BRIGHTMARK	505,000	50,223.75		
675801	NUCOR BUILDING SYSTEMS	436,800	45,486.31		
24201	SUN NG JELLY BARTON LAKE RV LL	311,100	35,503.55		
945001	719500 MEIJER, MAIL STOP #4	349,920	34,360.08		
641005	VENTRA ANGOLA, LLC	301,200	32,896.89		
13851400	TRUECORE LLC	264,600	28,627.15		
930100	VESTIL MANUFACTURING CORP	232,100	28,383.76		
1051700	MENARD INC	204,840	20,195.31		
709101	MSD OF STEUBEN COUNTY	163,200	19,362.59		
144404	THE GREEN DATA CENTRE LLC	310,400	17,345.89		
955101	DIVERSIFIED COATING	141,760	13,970.32		
1041901	TECHO-BLOC MIDWEST CORP	125,480	13,827.27		
943000	YMCA OF STEUBEN COUNTY INC	111,440	12,032.38		
340102	MANAPOGO RV CAMPGROUND	93,600	11,719.84		
1057401	STEUBEN LAKES REGIONAL	94,000	10,255.58		
975900	MSD OF STEUBEN COUNTY	80,480	10,226.82		
956205	HIGH POINT HEIFERS LLC	89,120	9,954.93		
907101	METAL SPINNERS	74,200	9,884.01		
700802	CPG OHIO LLC	84,400	9,521.72		
13751901	ANGOLA HOGBACK LAKE KOA	73,080	8,970.08		
530301	PETROL STOPPING CTRS#45	69,600	7,346.70		
1037601	FED EX FREIGHT EAST INC	67,440	7,314.61		
34301	ANGOLA HOGBACK LAKE KOA	58,860	7,306.54		
13720901	STONECO	47,400	6,978.89		
100001	CON-WAY CENTRAL EXPRESS	52,840	5,862.00		
527800	TOWN OF FREMONT	55,200	5,777.06		
13825301	WINGATE ANGOLA	53,800	5,661.55		
13900900	HAPPY ACRES LLC	45,600	5,507.75		
712500	EMF CORPORATION	40,500	5,000.22		
1038600	GLENDARIN HILLS GOLF CLUB	43,280	4,951.23		
13610000	API CONSTRUCTION CORP	21,040	4,674.99		
1000202	RMH FRANCHISE	39,560	4,387.45		
13614400	SMITH MARK	35,280	4,133.80		
1042001	OLD CASTLE LAWN & GARDEN	29,680	3,873.35		
13821000	VESTIL MANUFACTURING CORP	31,040	3,819.08		
63800	BUNCH SHOP RITE MARKET	35,360	3,755.66		
	August 2025 Totals	10,396,100	\$ 1,039,874.17		0.1000254
	July 2025 Totals	10,834,200	\$ 1,144,062.81		0.1055974

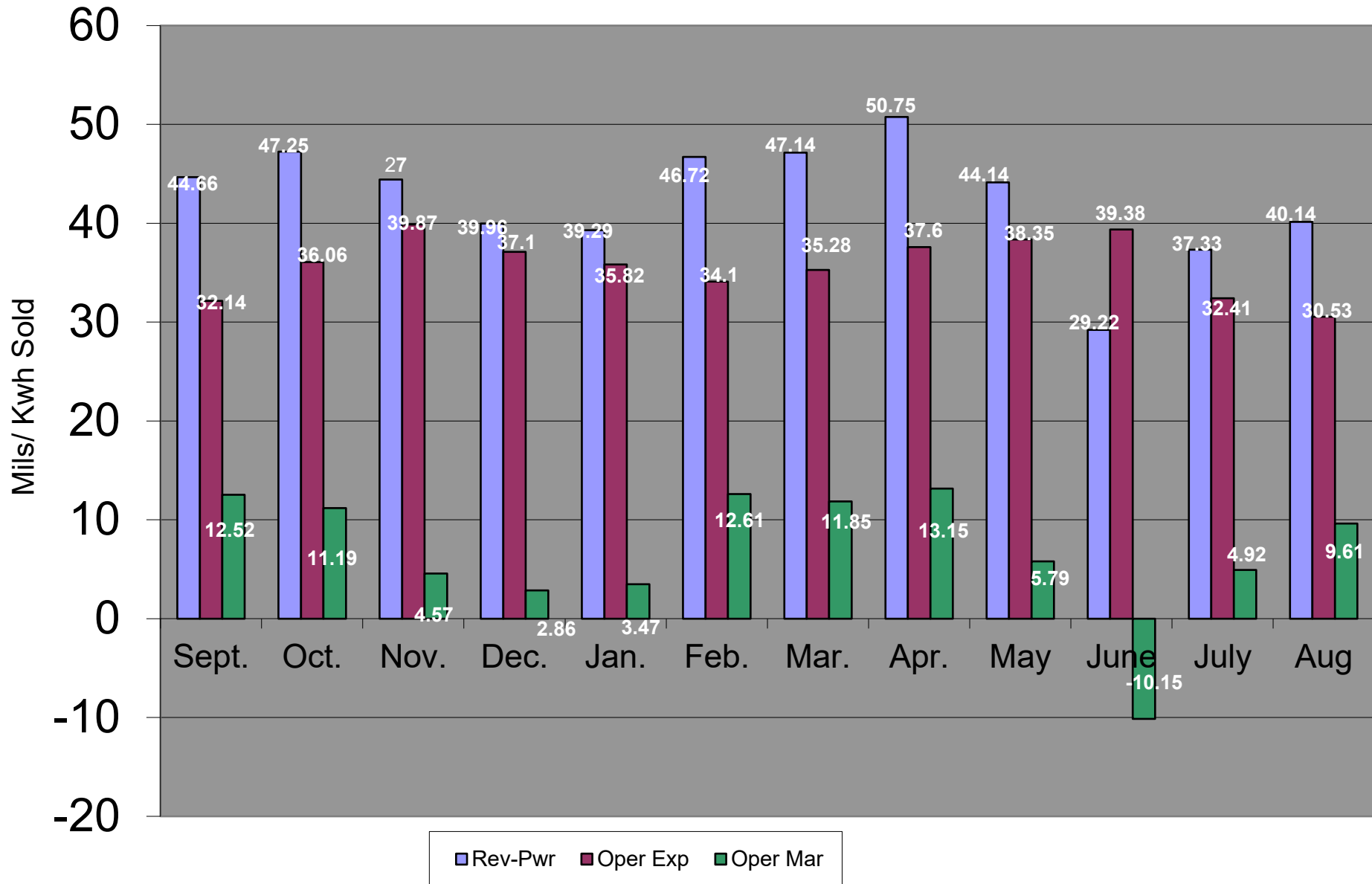
Power Cost in Mills / Kwh Sold



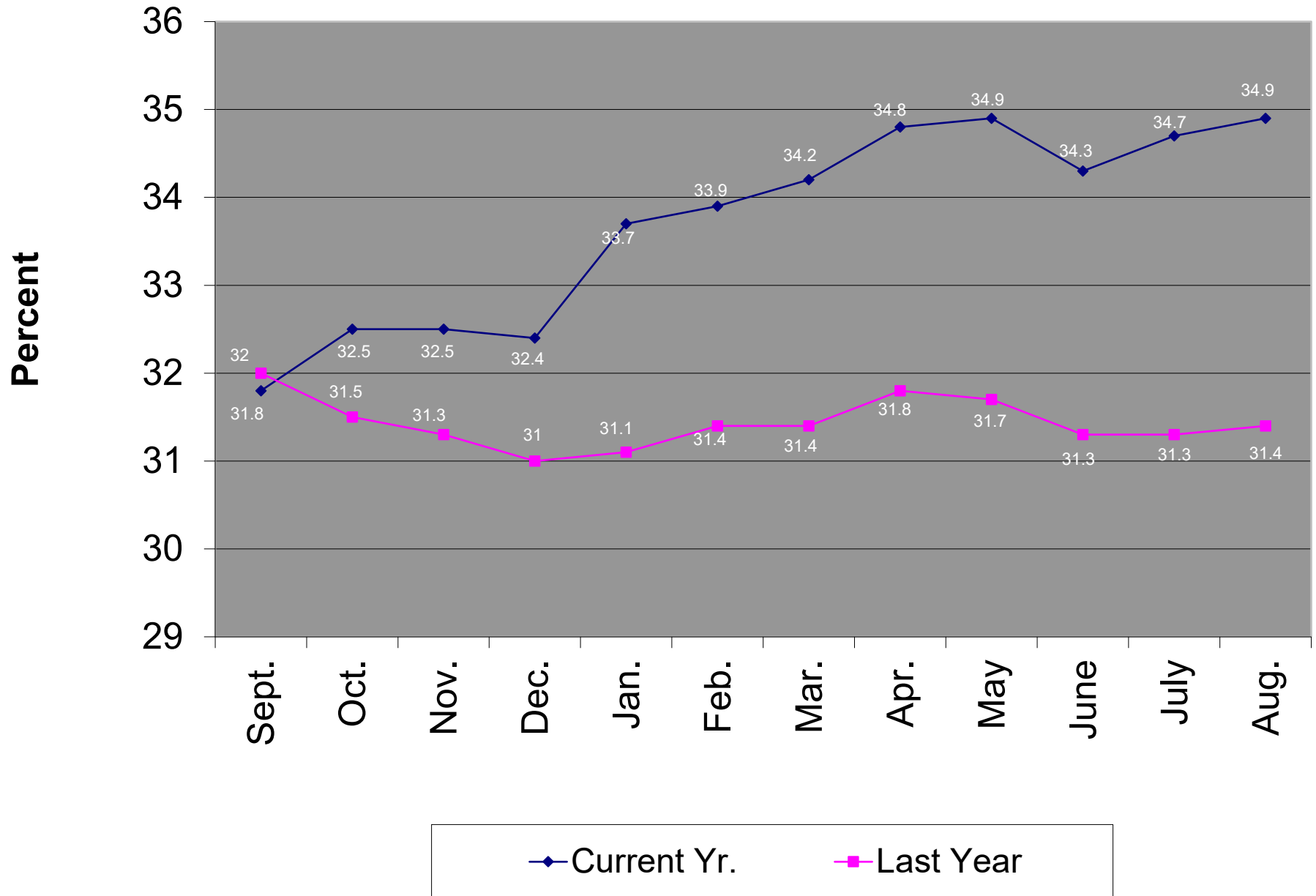
Oper. Exp. in Mills/KWH Sold



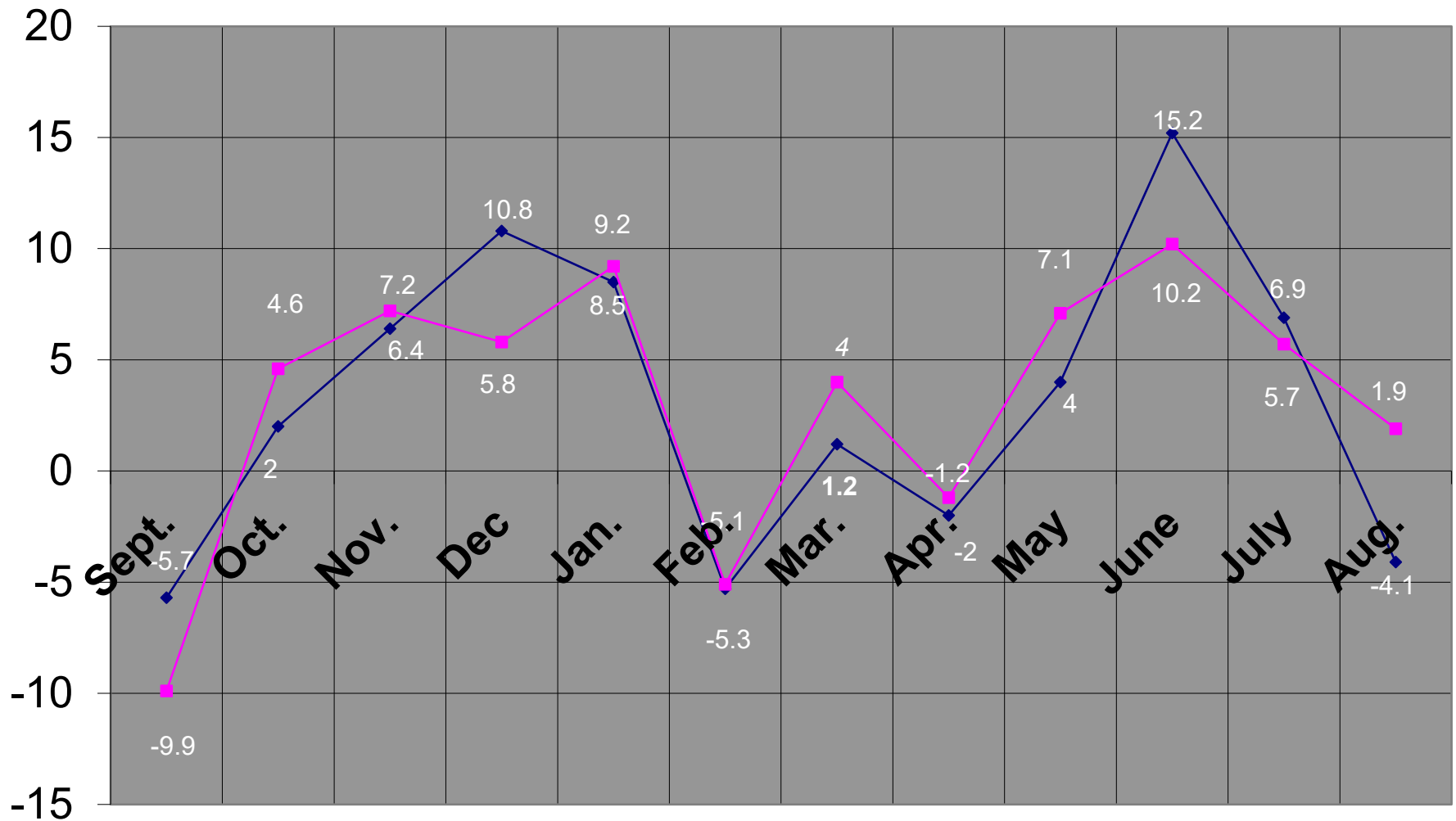
Gross Margin - Oper Exp = Oper Margin



Equity as a % of Total Assets



Percent Line Loss

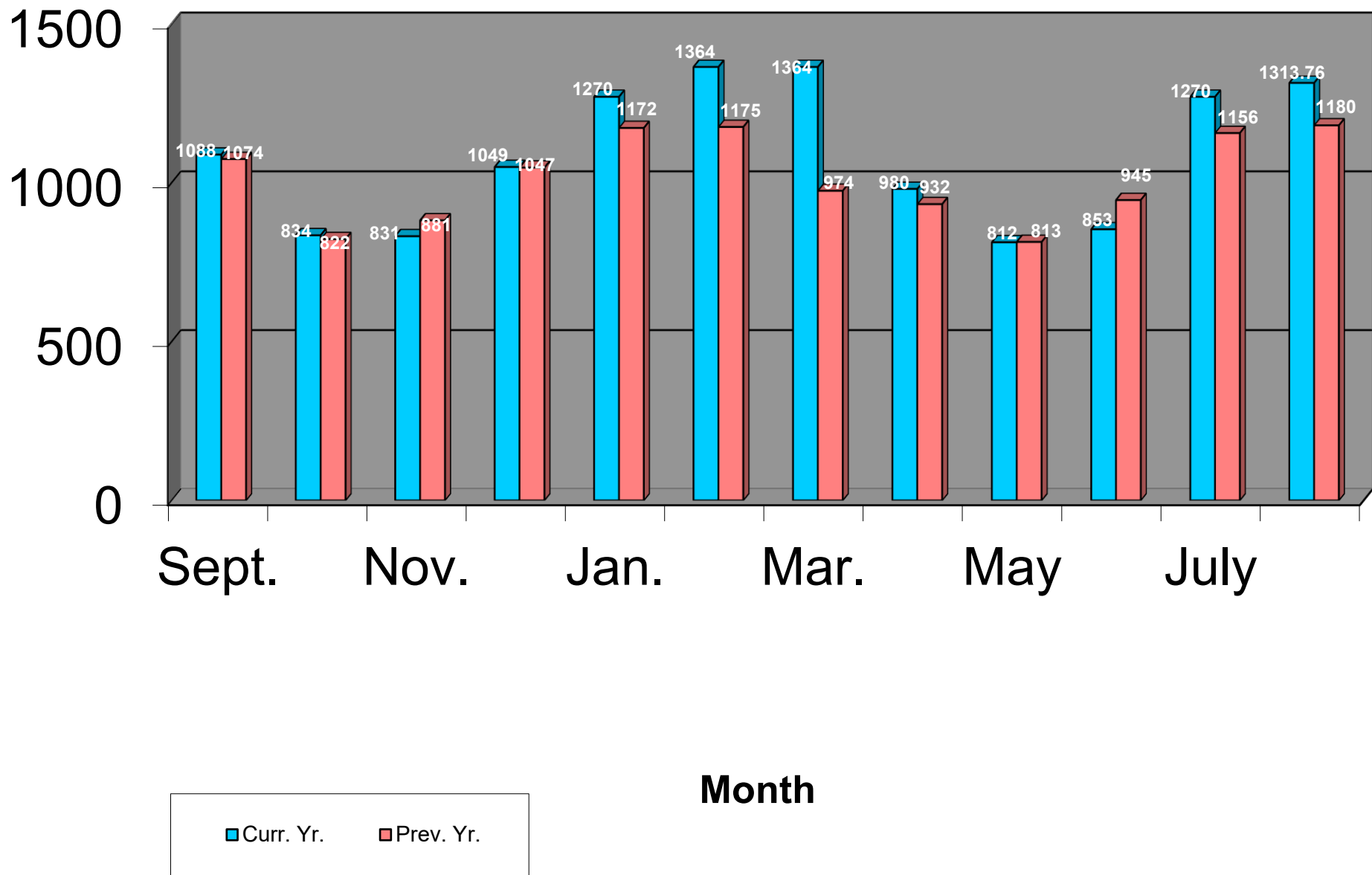


◆ Curr. Yr.

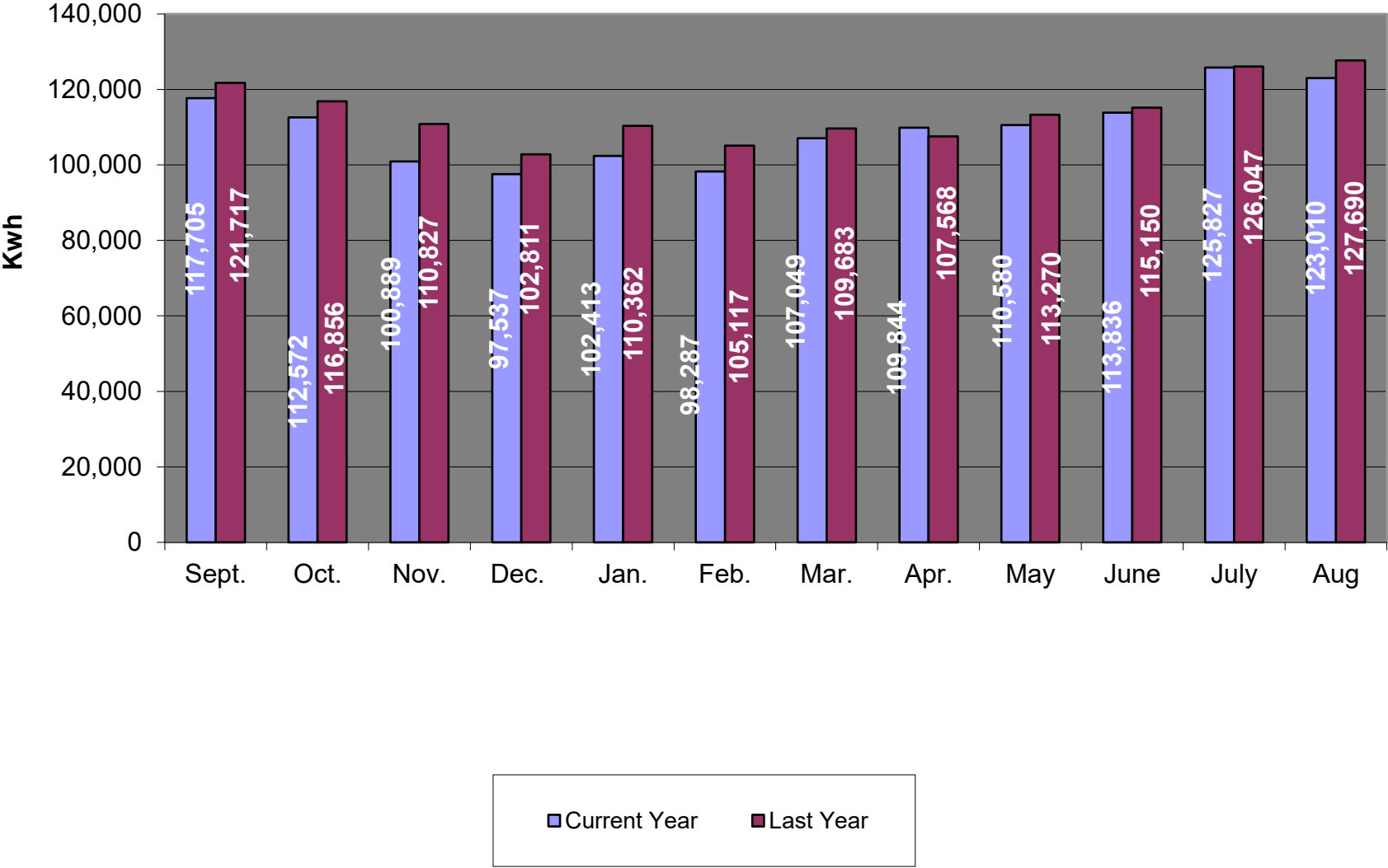
■ Prev. Yr.

Period Ending

Average Residential Kwh Consumption



C&I Average Consumption



STEUBEN CO REMC MONTHLY OUTAGE SUMMARY FOR: August 25

	POWER SUPPLIER	MAJOR STORM	SCHEDULED	ALL OTHER	TOTAL
<u>NO. OF OUTAGES</u> THIS MONTH	0	0	0	41	41
THIS MONTH LAST YEAR	0	0	2	107	109
THIS YEAR TO DATE	0	83	64	739	886
LAST YEAR TO DATE	0	0	15	987	1002
<u>CONSUMER HR. PER</u> THIS MONTH	0	0	0	490.63	490.63
THIS MONTH LAST YEAR	0	0	2.64	985.56	988.2
THIS YEAR TO DATE	0	3408.22	766.41	17846.99	22021.62
LAST YEAR TO DATE	0	0	711.66	125871.17	126582.8
<u>AVG.HRS PER CON.</u> THIS MONTH	0	0	0	0.4563	0.4563
THIS MONTH LAST YEAR	0	0	0.0002	0.093	0.093
THIS YEAR TO DATE	0	0.31778	0.0714	1.664	2.0532
LAST YEAR TO DATE	0	0	0.0673	11.9038	11.9711

DATA FOR COMPUTING AVERAGE HOURS PER CONSUMER:

NUMBER OF CONSUMERS SERVED THIS MONTH: 10752

AVERAGE NUMBER OF CONSUMERS THIS YEAR TO DATE: 1072

NUMBER OF CONSUMERS THIS MONTH LAST YEAR: 10592

AVERAGE NUMBER OF CONSUMERS LAST YEAR TO DATE: 10574

Otter Substation

On May 22, 2025 Otter was taken offline due to gassing in the transformer.

We now hope to have it back in service by the end of October. ~~It will take four two ? months to repair.~~

Ruhl Substation

On September 10th our Ruhl Sub was taken offline so NIPSCO can work on their Hooser Hills Substation. We hope to have it back by October 2nd.

Agenda

Steuben County REMC
Regular Board of Directors Meeting
September 29, 2025

1. Call to Order
2. Roll Call
3. General Consent Items
 - a. Agenda
 - b. Minutes of August 25, 2025 Board Meeting
 - c. Bills
 - d. Director Expenses
 - e. New Hookups
 - f. New Memberships
 - g. IUPPS Update
4. Informative Reports
 - a. CEO Financial Report
 - b. Re-Comm Update
 - c. Operation Round Up
 - d. Safety Meeting
 - e. WVPA Board Meeting
 - f. Member Services Report
 - g. Cyber Security
 - h. Broadband Update
 - i. NRECA Regional Meeting Review
 - j. Director Per Diem
 - k.
5. Executive Session
 - a. Wage & Benefit Report- Labor Committee
 - b. CEO Search
6. Decisions Needed
 - a.
7. Corporate Council Report
 - a.
8. Other Business
9. Calendar & Announcements
 - a. Next Regular Meeting October 27, 2025
10. Adjournment



Sept. 2025 Board Meeting

2004 Total				\$18,032.48		
2005 Total				\$41,792.07		
2006 Total				\$41,496.82		
2007 Total				\$41,034.09		
2008 Total				\$44,092.37		
2009 Total				\$44,920.33		
2010 Total				\$42,431.35		
2011 Total				\$41,919.61		
2012 Total				\$45,034.33		
2013 Total				\$42,477.23		
2014 Total				\$42,936.08		
2015 Total				\$43,682.99		
2016 Total				\$43,392.79		
2017 Total				\$44,027.97		
2018 Total				\$44,865.15		
2019 Total				\$45,389.98		
2020 Total				\$46,640.50		
2021 Total				\$48,570.78		
2022 Total				\$44,975.76		
2023 Total				\$41,850.76		
2024 Total				\$47,035.91		
2025						
Jan.				\$3,603.12		
Feb.				\$3,579.22		
Mar.				\$3,570.02		
Apr.				\$3,573.07		
May				\$3,585.32		
June				\$3,564.94		
July				\$3,652.55		
Aug				\$3,646.76		
Sept	Cycle 4		\$10.94			
	Cycle 1		\$1,042.25			
	Cycle 2		\$1,167.98			
	Cycle 3		\$0.00			
Adj.			\$0.00			
				\$2,221.17		
Total				\$927,595.52		
Membership Participation Level						
Total			10,143			
Participating Accounts			7,531			
Current Participation Rate			74.25%			
Last Months Rate			74.01%			

Agenda

Steuben County REMC
Regular Board of Directors Meeting
September 29, 2025

1. Call to Order
2. Roll Call
3. General Consent Items
 - a. Agenda
 - b. Minutes of August 25, 2025 Board Meeting
 - c. Bills
 - d. Director Expenses
 - e. New Hookups
 - f. New Memberships
 - g. IUPPS Update
4. Informative Reports
 - a. CEO Financial Report
 - b. Re-Comm Update
 - c. Operation Round Up
 - d. Safety Meeting
 - e. WVPA Board Meeting
 - f. Member Services Report
 - g. Cyber Security
 - h. Broadband Update
 - i. NRECA Regional Meeting Review
 - j. Director Per Diem
 - k.
5. Executive Session
 - a. Wage & Benefit Report- Labor Committee
 - b. CEO Search
6. Decisions Needed
 - a.
7. Corporate Council Report
 - a.
8. Other Business
9. Calendar & Announcements
 - a. Next Regular Meeting October 27, 2025
10. Adjournment

Safety Report
Steuben County REMC
Board of Directors
September 23, 2025

September 19, 2025- Chris Hamilton from IEC was here for the September safety meeting with the topic being hearing wellness.

There were no injuries or loss of time reported.

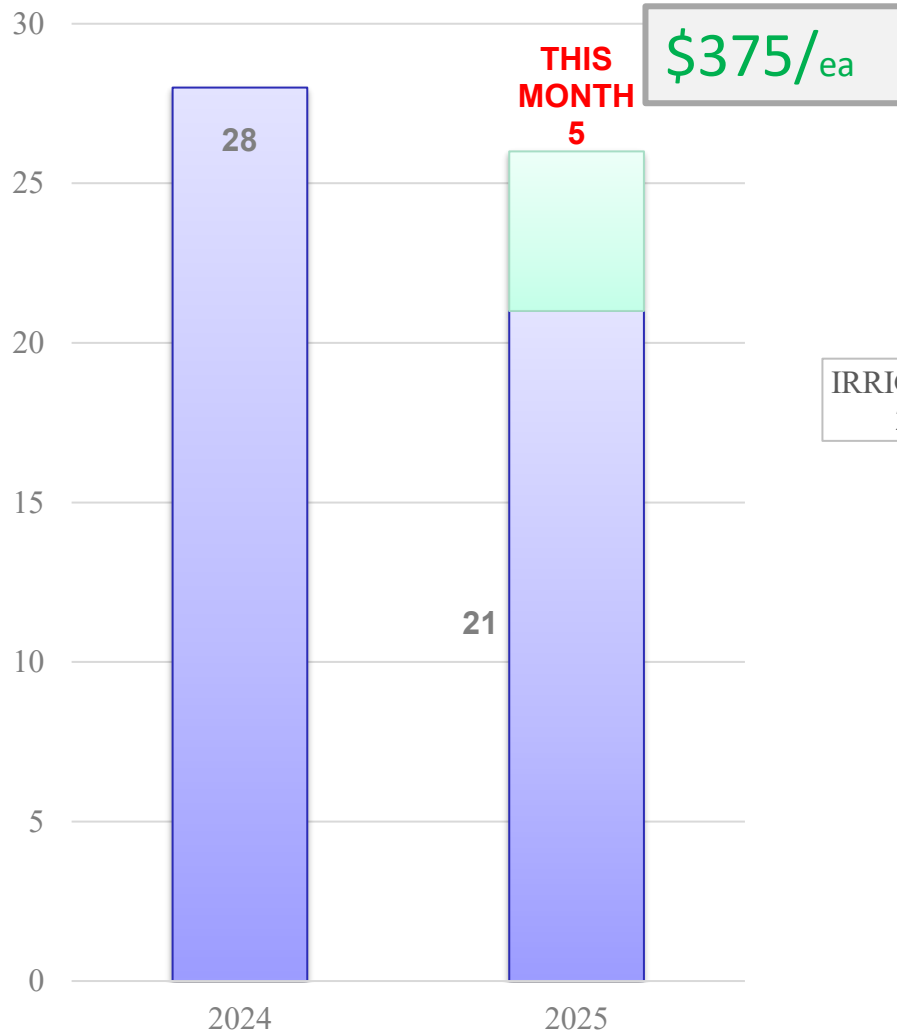
Agenda

Steuben County REMC
Regular Board of Directors Meeting
September 29, 2025

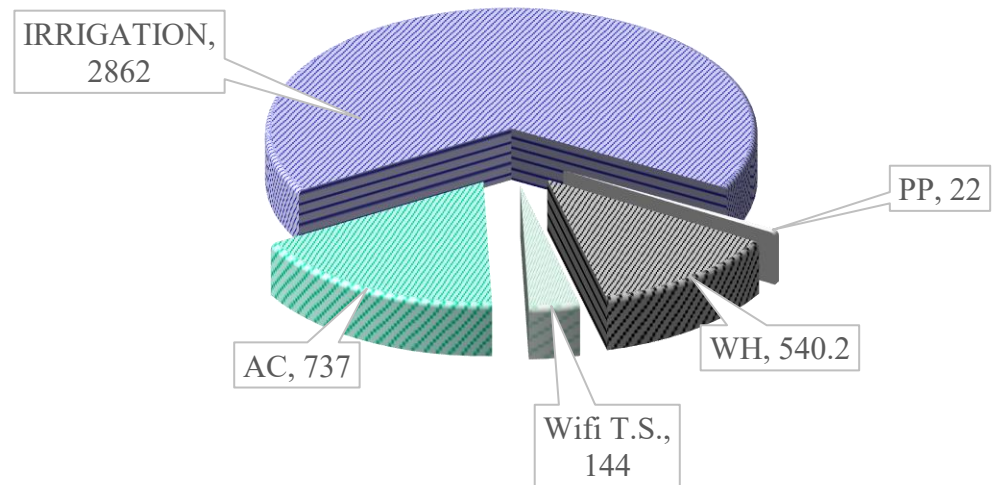
1. Call to Order
2. Roll Call
3. General Consent Items
 - a. Agenda
 - b. Minutes of August 25, 2025 Board Meeting
 - c. Bills
 - d. Director Expenses
 - e. New Hookups
 - f. New Memberships
 - g. IUPPS Update
4. Informative Reports
 - a. CEO Financial Report
 - b. Re-Comm Update
 - c. Operation Round Up
 - d. Safety Meeting
 - e. WVPA Board Meeting
 - f. Member Services Report
 - g. Cyber Security
 - h. Broadband Update
 - i. NRECA Regional Meeting Review
 - j. Director Per Diem
 - k.
5. Executive Session
 - a. Wage & Benefit Report- Labor Committee
 - b. CEO Search
6. Decisions Needed
 - a.
7. Corporate Council Report
 - a.
8. Other Business
9. Calendar & Announcements
 - a. Next Regular Meeting October 27, 2025
10. Adjournment

MARKETING & MEMBER SERVICES

WATER HEATER SALES

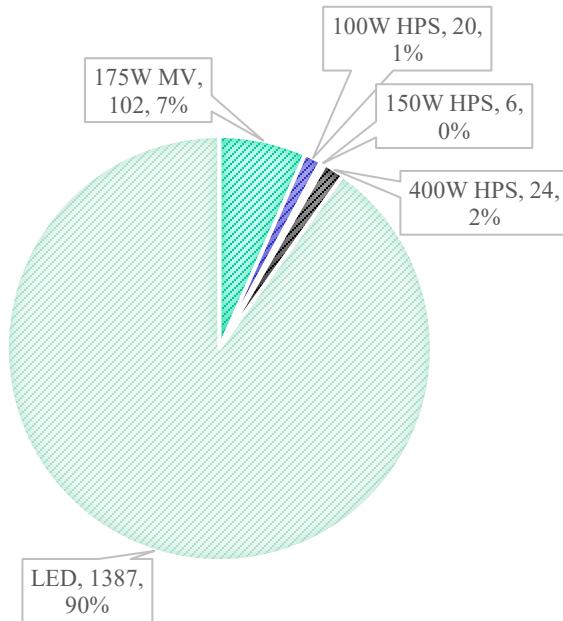


LOAD MANAGEMENT – KW 4197.2 KW



MARKETING & MEMBER SERVICES

SECURITY LIGHTS AS OF 1/2025



2025 SECURITY LIGHT INSTALLS/REMOV ALS

3- REMOVALS
(1) this month
4 - NEW
(2) this month
14 - SWAP/
MAINT.
(5) this month



9 Members

122 Units
(NO CHANGE)



EV CHARGER STATISTICS
3482 VEHICLES CHARGED
15,431 kWh's CONSUMED
5.30 HRS - AVG SESSION

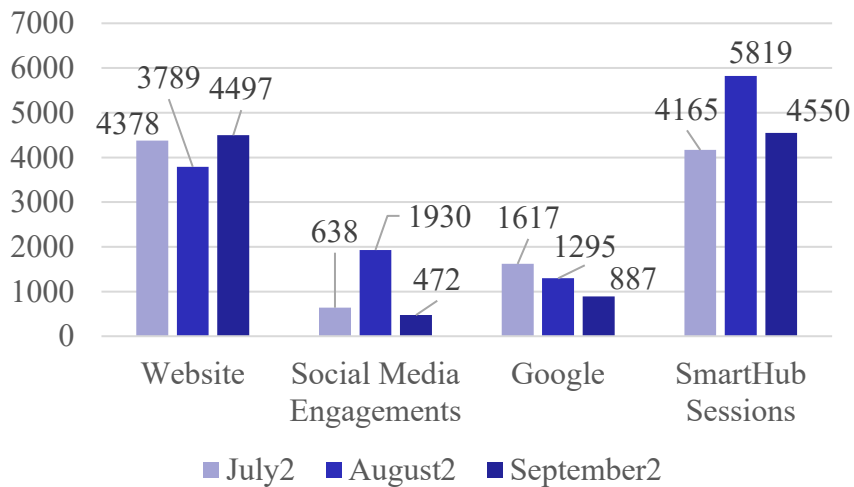
15 VEHICLES CHARGED
547 kWh's CONSUMED

MARKETING & MEMBER SERVICES

INCLUDES PMT,
VIEW BILL, VIEW
USAGE, ECT...
9681 Subscribers



Member Engagement

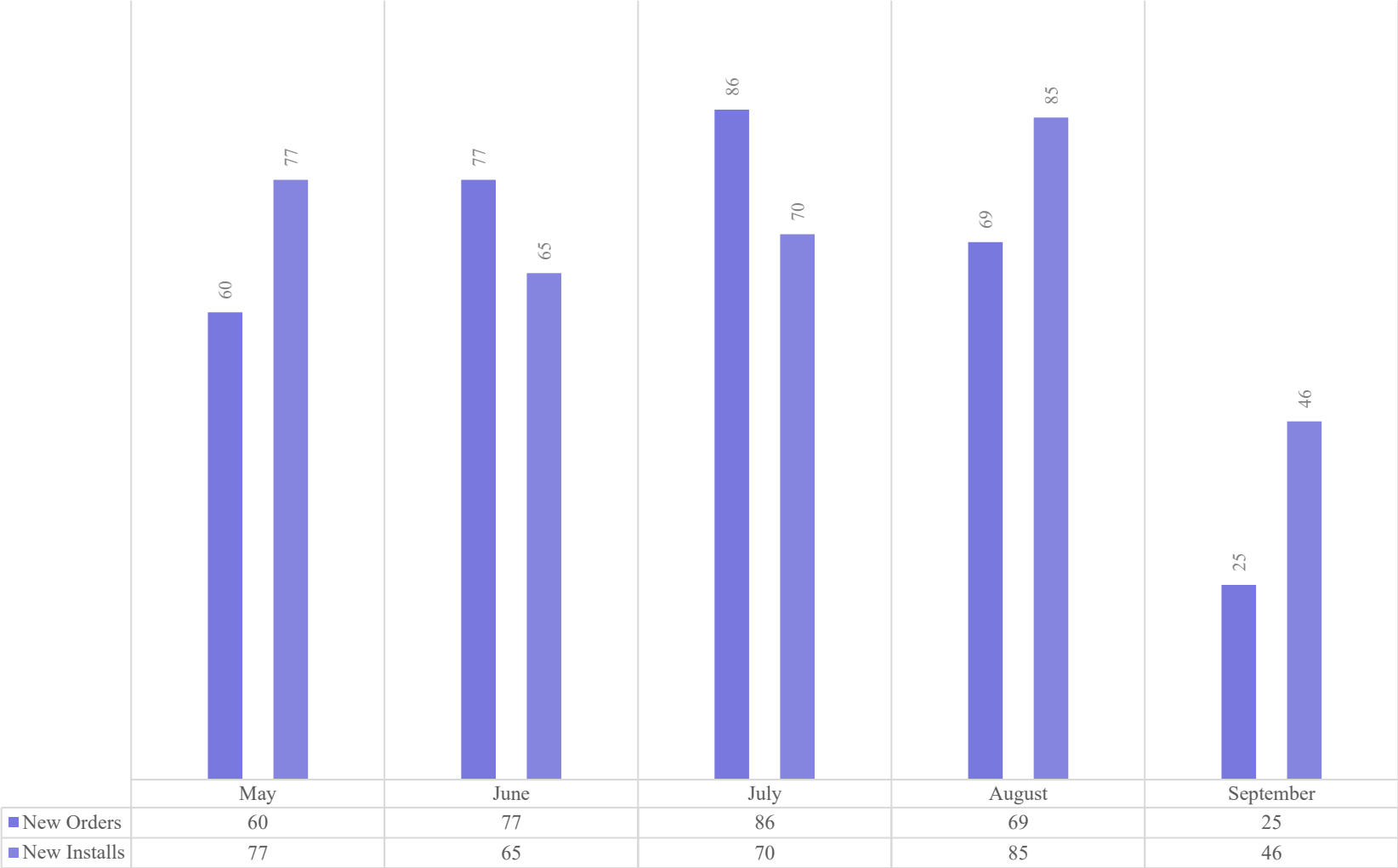


Website

1	Home Steuben County REMC	2,032 (45.19%)
2	Packages/ Pricing Steuben County REMC	380 (8.45%)
3	Storm/ Outage Center Steuben County REMC	325 (7.23%)
4	Check Availability Steuben County REMC	259 (5.76%)
5	SmartHub Steuben County REMC	223 (4.96%)
6	Contact Us Steuben County REMC	191 (4.25%)
7	How to make a payment Steuben County REMC	163 (3.62%)
8	Board of Directors Steuben County REMC	97 (2.16%)
9	Resource Not Found Steuben County REMC	87 (1.93%)
10	Rebate Programs Steuben County REMC	75 (1.67%)

NEW ORDERS/INSTALLS

New Orders New Installs



9.15.2025												
	Zone	Marketing Zone	Uncat	Active	Active	Uncat.	Pendin	Pendir	9.15	NEW	Total Membe	% Take
PHASE 1	1	OTTER NORTHWEST	1	92	93		2	2	95	6	118	81%
	2	OTTER NORTHEAST	5	376	381		2	2	383	14	632	61%
	3	OTTER SOUTH	7	709	716		6	6	722	19	973	74%
	4	ORLAND MP	2	209	211		2	2	213	16	361	59%
	5	HELMER MP		145	145		1	1	146	7	197	74%
PHASE 2	6	NEVADA NORTH	4	218	222		0	0	222	11	382	58%
	7	NEVADA NORTHEAST	4	372	376		2	2	378	23	874	43%
	8	NEVADA WEST	7	425	432		3	3	435	26	1110	39%
	9	NEVADA EAST	8	236	244		0	0	244	3	519	47%
PHASE 3	10	SCOTT NORTHWEST	7	320	327		5	5	332	14	549	60%
	11	SCOTT WEST, NORTHEAST, SOUTH	3	82	85		0	0	85	10	166	51%
	12	RUHL	5	205	210		1	1	211	-4	404	52%
	13	ANGOLA N&W	24	238	262		1	1	263	16	427	62%
	14	SCOTT EAST	18	410	428		4	4	432	17	738	59%
PHASE 4	15	ANGOLA SOUTH	14	213	227		0	0	227	11	374	61%
	16	STEUBENVILLE	10	185	195		4	4	199	14	423	47%
	17	WATERLOO	5	58	63		0	0	63	5	177	36%
P2P				220	220		1	6	7	227	6	
Total					4837		39	40	4877	214	8424	58%

Other Updates

Important Capital Credit Updates

- General Retirement
 - Issuing on November 1, 2025
- Unclaimed (Escheat)
 - Posting October 1, 2025
 - Deadline December 1, 2025

Agenda

Steuben County REMC
Regular Board of Directors Meeting
September 29, 2025

1. Call to Order
2. Roll Call
3. General Consent Items
 - a. Agenda
 - b. Minutes of August 25, 2025 Board Meeting
 - c. Bills
 - d. Director Expenses
 - e. New Hookups
 - f. New Memberships
 - g. IUPPS Update
4. Informative Reports
 - a. CEO Financial Report
 - b. Re-Comm Update
 - c. Operation Round Up
 - d. Safety Meeting
 - e. WVPA Board Meeting
 - f. Member Services Report
 - g. Cyber Security
 - h. Broadband Update
 - i. NRECA Regional Meeting Review
 - j. Director Per Diem
 - k.
5. Executive Session
 - a. Wage & Benefit Report- Labor Committee
 - b. CEO Search
6. Decisions Needed
 - a.
7. Corporate Council Report
 - a.
8. Other Business
9. Calendar & Announcements
 - a. Next Regular Meeting October 27, 2025
10. Adjournment

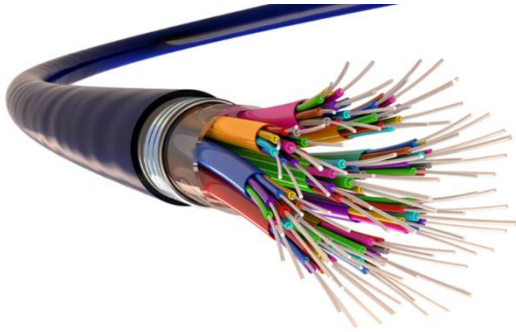
Cyber Security

On September 18th NISC completed an update to the Firewall. This change is a significant upgrade and it was in addition to the usual updates for NISC, SCADA and Tantalus.

Agenda

Steuben County REMC
Regular Board of Directors Meeting
September 29, 2025

1. Call to Order
2. Roll Call
3. General Consent Items
 - a. Agenda
 - b. Minutes of August 25, 2025 Board Meeting
 - c. Bills
 - d. Director Expenses
 - e. New Hookups
 - f. New Memberships
 - g. IUPPS Update
4. Informative Reports
 - a. CEO Financial Report
 - b. Re-Comm Update
 - c. Operation Round Up
 - d. Safety Meeting
 - e. WVPA Board Meeting
 - f. Member Services Report
 - g. Cyber Security
 - h. Broadband Update
 - i. NRECA Regional Meeting Review
 - j. Director Per Diem
 - k.
5. Executive Session
 - a. Wage & Benefit Report- Labor Committee
 - b. CEO Search
6. Decisions Needed
 - a.
7. Corporate Council Report
 - a.
8. Other Business
9. Calendar & Announcements
 - a. Next Regular Meeting October 27, 2025
10. Adjournment



BROADBAND UPDATE

SEPTEMBER 2025

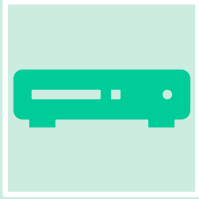


SERVICE INSTALLATION REPORT

			PTP COUNT	258
			NEW ORDERS HISTORICAL AVERAGE	15.46428571
			AVERAGE NEW ORDERS /WEEK (LAST TWO MONTHS)	15
			TODAY	9/23/2025
			DAYS LEFT IN THE YEAR	99
			WEEKS LEFT IN THE YEAR	14
			PROJECTED NEW ORDERS	210
			TOTAL PROJECTED ACTIVE ACCOUNTS	5139
			TOTAL PROJECTED ACTIVE FTTH MEMBERS	4881
			PROJECTED TAKE RATE	59%
			FULL ACTUAL TAKE RATE	56.44%
			FTTH ACTUAL TAKE RATE	55.10%

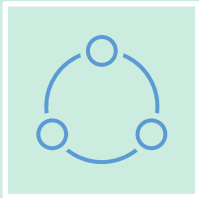
- **SERVICE INSTALLATIONS TO DATE:**
 - 4900 ACTIVE SUBSCRIBERS AS OF 9/23/25.
- **RUN RATE**
 - NEW ORDERS WEEKLY AVERAGE HAS FALLEN FROM 18 LAST MONTH TO 15 THIS MONTH. AVERAGE WEEKLY INSTALLS WERE STEADY AT 19 PER WEEK, WHICH LOOKING AT CURRENT DATA, WILL FALL OFF NEXT MONTH.

FTTH STATUS REPORT



BANDWIDTH INCREASE.

20Gb REDUNDANT DIA CIRCUIT INSTALLATION AND TURN-UP COMPLETED. WE NOW HAVE FULLY REDUNDANT 20Gb DIA LINES.



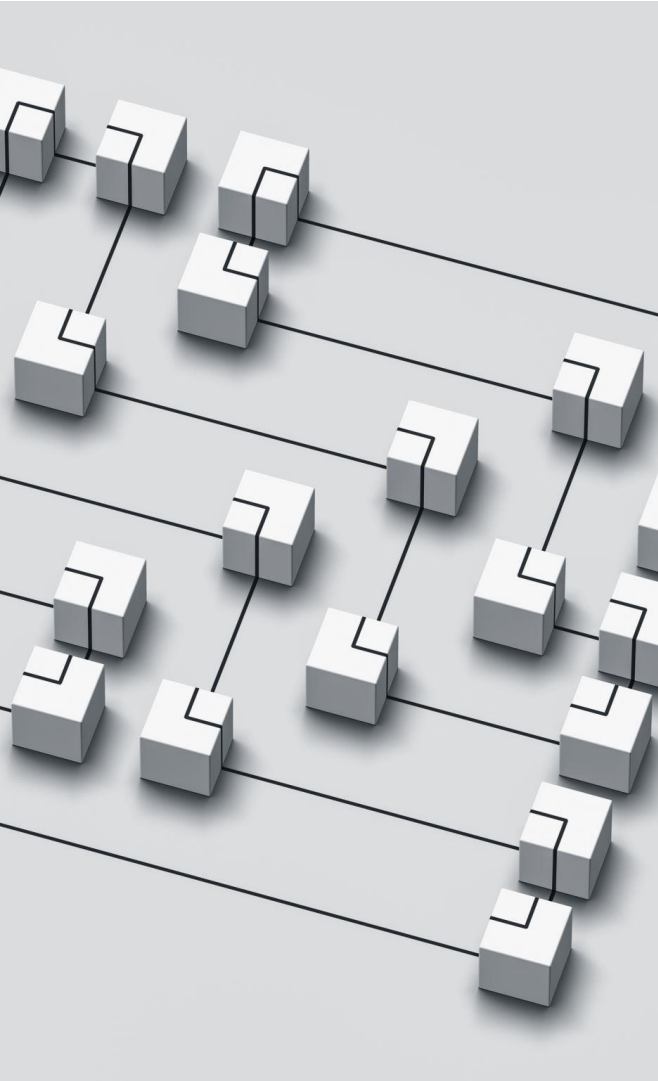
XGS EQUIPMENT INSTALLATION

EQUIPMENT INSTALLED AND TESTED IN ANGOLA. INSTALLED IN ORLAND AND STEUBENVILLE AS WELL. PENDING 2.5Gb/S SERVICES TO BE INSTALLED.



CHURN REPORT

WE ARE STILL SEEING A FEW MEMBERS LEAVING FOR OUR COMPETITION BUT WE ALSO SEE A FEW RETURNING MEMBERS FROM THOSE COMPETITORS EACH WEEK.



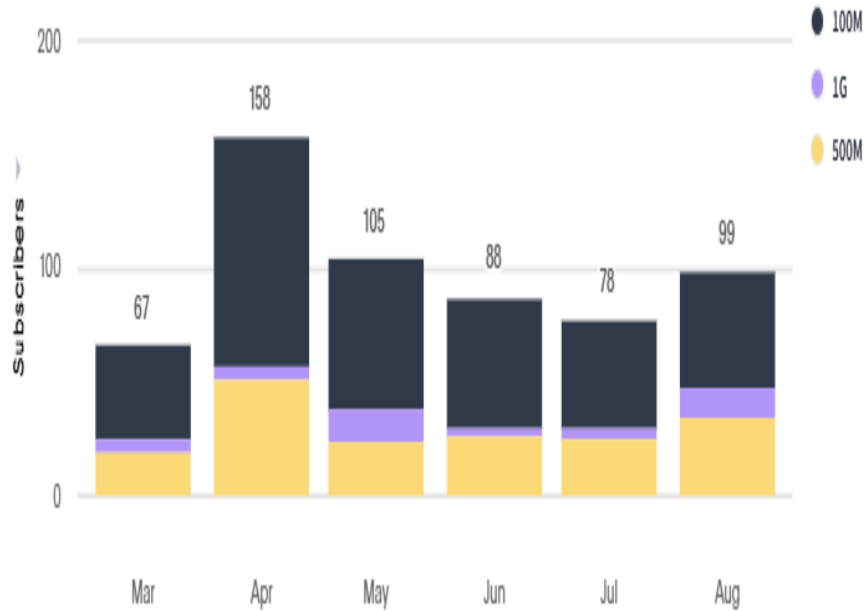
P2P STATUS REPORT

- P2P NETWORK UPDATE.
 - 1 NEW ORDER RECEIVED FROM i-NET.
 - 1 DISCONNECT ORDER - FOODS ALIVE (WAS AN I-NET CUSTOMER AND WENT TO FRONTIER).
 - PSB RACK SPACE LEASE DISCUSSED WITH i-NET. NEED TO PERFORM SITE SURVEY'S (MID-OCTOBER) FOR INVENTORY AUDIT AND DEVELOP AN AGREEMENT WILL NEED TO BE CREATED THAT DEFINES THE STIPULATIONS OF THEM OCCUPYING OUR SPACE.

SUBSCRIBER STATISTICS

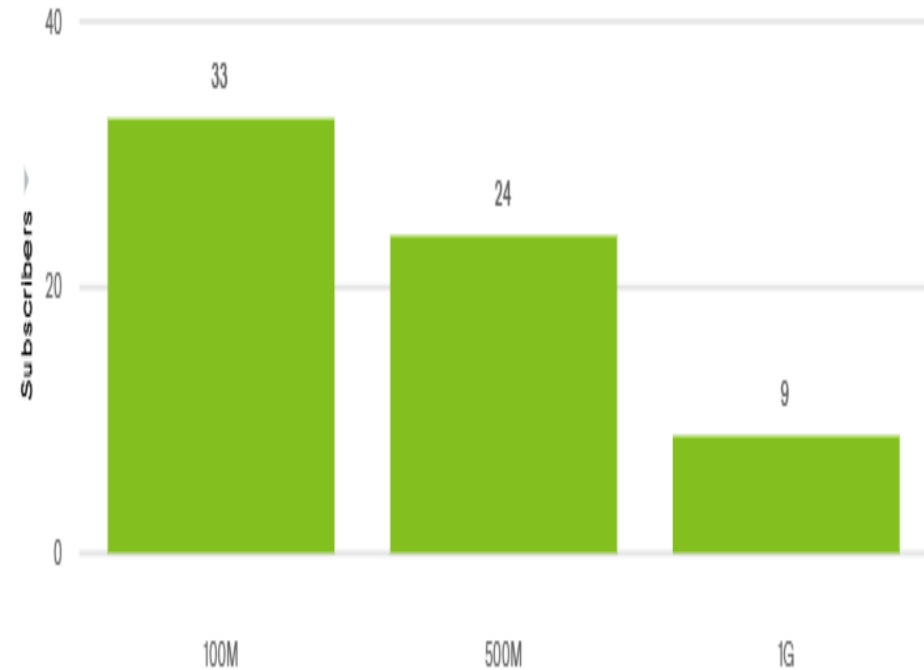
CONTINUING TO SEE AN UPTICK IN SUBSCRIBER COUNT

Acquisition Rate & Insights



↑
for 2025

New Subscribers by Service Tier & Technology

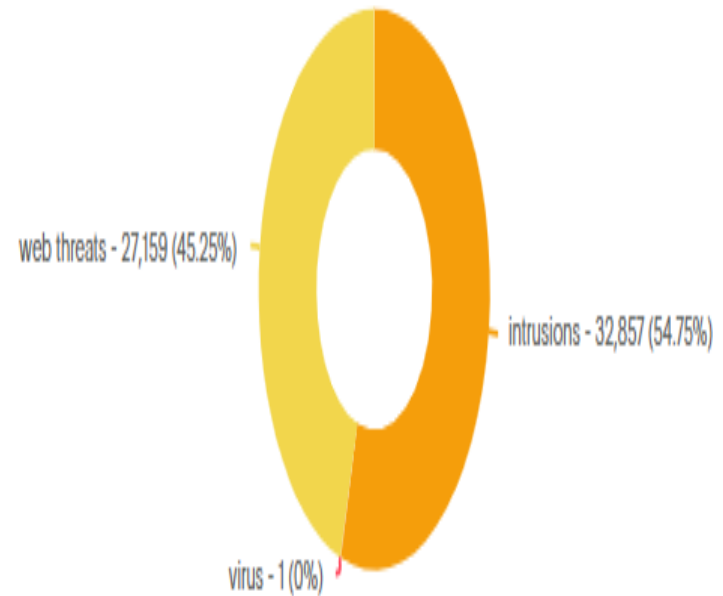


STATISTICS

CONT'D

Blocked Threats Insights

- IN THE LAST TWO MONTHS WE HAVE BLOCKED 27,159 WEB THREATS AND 32,857 INTRUSIONS AND 1 VIRUS FOR OUR MEMBERS



CALL CENTER STATISTICS

BOTH OVERFLOW MEMBER
SERVICE CALLS AS WELL AS
TECH SUPPORT CALLS

CALLS REFERRED BACK TO US DURING BUS. HOURS	59
CHECKING ON AN EXISTING TICKET	9
ESCALATED TO BUSINESS OFFICE	67
AFTER HOURS ESCALATED TO DAVE	6
CALL CENTER RESOLVED	60
DISCONNECTED BEFORE ANSWERED	11
OUTAGE RELATED SERVICE ORDERS	49

Agenda

Steuben County REMC
Regular Board of Directors Meeting
September 29, 2025

1. Call to Order
2. Roll Call
3. General Consent Items
 - a. Agenda
 - b. Minutes of August 25, 2025 Board Meeting
 - c. Bills
 - d. Director Expenses
 - e. New Hookups
 - f. New Memberships
 - g. IUPPS Update
4. Informative Reports
 - a. CEO Financial Report
 - b. Re-Comm Update
 - c. Operation Round Up
 - d. Safety Meeting
 - e. WVPA Board Meeting
 - f. Member Services Report
 - g. Cyber Security
 - h. Broadband Update
 - i. NRECA Regional Meeting Review
 - j. Director Per Diem
 - k.
5. Executive Session
 - a. Wage & Benefit Report- Labor Committee
 - b. CEO Search
6. Decisions Needed
 - a.
7. Corporate Council Report
 - a.
8. Other Business
9. Calendar & Announcements
 - a. Next Regular Meeting October 27, 2025
10. Adjournment

Board of Directors Per Diem

- Currently
 - \$400. per day
 - \$60 monthly stipend for internet service

INDIANA ELECTRIC COOPERATIVES ("IEC")
PER DIEM AND COST SURVEY OF REMC DIRECTORS
MAY 2025

		ATTENDANCE REQUIRED TO BE PAID PER DIEM	NON BOARD MEETING PER DIEM \$	OTHER PER DIEM \$ (Please Use note tab to Explain)	COOP PAY MEDICAL INS FOR DIR	IF YES, AVERAGE ANNUAL MEDICAL INS PAID BY CO-OP. PER INSURED DIRECTOR \$	# OF BOARD MEMBERS	AVERAGE HOURS PER DIRECTOR PER MONTH	# OF BOARD MEMBERS ATTENDING ANNUAL MEETINGS OF					TOTAL COMPENSATION & BENEFITS FOR DIRECTORS	TOTAL OTHER FEES & EXPENSES FOR DIRECTORS	TOTAL ANNUAL DIRECTOR COMPENSATION, BENEFITS, FEES & EXPENSES 12/31/24	AVG ANNUAL COST \$ PER DIRECTOR
	CURRENT PER DIEM FOR REGULAR BOARD MTG. \$	Yes/No	i.e. committees		YES/NO				IEC	G&T	OTHER	NRECA	NRECA REGION 4	IRS Form 990 Part 7 Col D. amt. Reportable Compensation (e.g. payments for Per Diem +Health Insurance)	All other fees, expenses e.g. Travel, registrations, education, etc.		
(Col A)	(Col B)	(Col C)	(Col D)	(Col E)	(Col F)	(Col G)	(Col H)	(Col I)	(Col J)	(Col K)	(Col L)	(Col M)	(Col N)	(Col O)	(Col P)	(Col Q)	(Col R)
1	\$ 850	Yes	\$ 400	\$ 400	No		7	15	4	4		2	1	\$ 92,361	\$ 8,142	\$ 100,503	\$ 14,358
2	\$ 350	Yes	\$ 185	\$ 185	No		7	18	6		5	2		\$ 109,031	\$ 45,934	\$ 154,965	\$ 22,138
3	\$ 300	Yes	\$ 125	\$ 375	No		12	24	12	1		4	4	\$ 213,807	\$ 29,102	\$ 242,909	\$ 20,242
4	\$ 150	Yes	\$ 150		Yes	\$ 10,779	8	11	7	1		2		\$ 105,123	\$ 17,913	\$ 123,036	\$ 15,380
5	\$ 425	Yes	\$ 425		No		7	6	4	1			1	\$ 40,360	\$ 17,235	\$ 57,595	\$ 8,228
6	\$ 350	Yes	\$ 150	\$ 1,750	No		7		7			2	1	\$ 177,587	\$ 28,939	\$ 206,526	\$ 29,504
7	\$ 300	Yes	\$ 150		Yes	\$ 17,339	7	26	5			2	1	\$ 199,792	\$ 21,227	\$ 221,019	\$ 31,574
8	\$ 400	Yes	\$ 400	\$ 700	No		9	24	4	6	1	1	2	\$ 148,400	\$ 50,337	\$ 198,737	\$ 22,082
9	\$ 747	Yes	\$ 250	\$ 150	No		7	8	3	1		1	1	\$ 63,711	\$ 5,700	\$ 69,411	\$ 9,916
10	\$ 720	No	\$ 205	\$ 320	No		9	20	8	1				\$ 95,780	\$ 41,216	\$ 136,996	\$ 15,222
11	\$ 1,000	No	\$ 500		No		7	20	6	2	7	2	4	\$ 102,100	\$ 28,797	\$ 130,897	\$ 18,700
12	\$ 700	No	\$ 200		No		7	19	4	7		3	3	\$ 94,206	\$ 61,829	\$ 156,035	\$ 22,291
13	\$ 150	Yes	\$ 175	\$ 900	No		7	11	4	1			2	\$ 95,871	\$ 8,635	\$ 104,506	\$ 14,929
14	\$ 288	Yes	\$ 288	\$ 550	No		7	17	7	4	5	6	4	\$ 101,616	\$ 28,739	\$ 130,355	\$ 18,522
15	\$ 650	Yes	\$ 250	\$ 70	No		9	23	6	4			3	\$ 77,855	\$ 18,836	\$ 96,691	\$ 10,743
16	\$ 300	Yes	\$ 300	\$ 1,099	No		7	5	7	7	7	7	7	\$ 136,324	\$ 40,552	\$ 176,876	\$ 25,268
17	\$ 1,439	Yes	\$ 200	\$ 400	No		9	10	3			1		\$ 166,312	\$ 12,719	\$ 179,031	\$ 19,892
18	\$ 250	Yes	\$ 175	\$ 800	No		9		7	7		4	4	\$ 152,452	\$ 35,797	\$ 188,249	\$ 20,917
19	\$ 400	Yes		\$ 850	No		7	5	7	1		1	1	\$ 107,800	\$ 6,838	\$ 114,638	\$ 16,377
20	\$ 975	No		\$ 6,000	No		13	24	12		4	9		\$ 244,350	\$ 96,631	\$ 340,981	\$ 26,229
21	\$ 750	Yes	\$ 375	\$ 525	No		9	15	8	8		4	3	\$ 149,585	\$ 36,344	\$ 185,929	\$ 20,659
22	\$ 400	Yes	\$ 400	\$ 60	No		9	5	5			2		\$ 72,000	\$ 38,727	\$ 110,727	\$ 12,303
23	\$ 600	Yes	\$ 600	\$ 800	No		9	4	1	2		1		\$ 118,894	\$ 25,664	\$ 144,558	\$ 16,062
24	\$ 400	Yes	\$ 200	\$ 400	No		9	14	7	8		5	3	\$ 59,460	\$ 9,082	\$ 68,542	\$ 9,792
25	\$ 586	No	\$ 251	\$ 362	No		7	20	2	3				\$ 78,835	\$ 47,732	\$ 126,567	\$ 18,081
26	\$ 338	Yes	\$ 338	\$ 56	No		7	30	6	1		2	2	\$ 95,375	\$ 63,626	\$ 159,001	\$ 22,714
27	\$ 250	Yes	\$ 75	\$ 200	No		7	19	7	1		1	2	\$ 94,750	\$ 13,568	\$ 108,318	\$ 15,474
28	\$ 250	Yes	\$ 250	\$ 700	No		7	18	4	5	4	3		\$ 120,000	\$ 14,174	\$ 134,174	\$ 19,168
29	\$ 375	Yes	\$ 375		Yes	\$ 987	7	10	6	2				\$ 75,050	\$ 54,891	\$ 129,941	\$ 18,563
30	\$ 500	Yes	\$ 350		No		7	18	7	7	7	7	7	\$ 75,607	\$ 12,889	\$ 88,496	\$ 9,833
31	\$ 557	Yes	\$ 84		No		9	10	3	2		2		\$ 121,256	\$ 31,000	\$ 152,256	\$ 19,917
32	\$ 500	Yes	\$ 60	\$ 50	Yes	\$ 22,000	9	12	9	1		1	1	\$ 189,153	\$ 24,621	\$ 213,774	\$ 23,753
33	\$ 326	Yes	\$ 326		Yes	\$ 13,818	9	8	9	1		2	1	\$ 82,969	\$ 6,312	\$ 89,281	\$ 12,754
34	\$ 500	No	\$ 375	\$ 63	No		7	21	5	5	7	3	4				
Count																	
Yes		28			5												
No		6			29												
Total		34			34												
Average	\$ 502		\$ 268	\$ 711		\$ 12,985	8	15	6	3	5	3	3	\$ 116,902	\$ 29,811	\$ 146,713	\$ 18,142
High	\$ 1,439		\$ 600	\$ 6,000		\$ 22,000	13	30	12	8	7	9	7	\$ 244,350	\$ 96,631	\$ 340,981	\$ 31,574
Low	\$ 150		\$ 60	\$ 50		\$ 987	7	4	1	1	1	1	1	\$ 40,360	\$ 5,700	\$ 57,595	\$ 8,228
Median (middle number)	\$ 400		\$ 250	\$ 400		\$ 13,818	7	16	6	2	5	2	2	\$ 102,100	\$ 28,739	\$ 134,174	\$ 18,563
Average excluding high/low	\$ 484		\$ 248	\$ 366		\$ -	8	14	6	3	1	2	2	\$ 111,858	\$ 27,544	\$ 138,842	\$ 13,116

Agenda

Steuben County REMC
Regular Board of Directors Meeting
September 29, 2025

1. Call to Order
2. Roll Call
3. General Consent Items
 - a. Agenda
 - b. Minutes of August 25, 2025 Board Meeting
 - c. Bills
 - d. Director Expenses
 - e. New Hookups
 - f. New Memberships
 - g. IUPPS Update
4. Informative Reports
 - a. CEO Financial Report
 - b. Re-Comm Update
 - c. Operation Round Up
 - d. Safety Meeting
 - e. WVPA Board Meeting
 - f. Member Services Report
 - g. Cyber Security
 - h. Broadband Update
 - i. NRECA Regional Meeting Review
 - j. Director Per Diem
 - k.
5. Executive Session
 - a. Wage & Benefit Report- Labor Committee
 - b. CEO Search
6. Decisions Needed
 - a.
7. Corporate Council Report
 - a.
8. Other Business
9. Calendar & Announcements
 - a. Next Regular Meeting October 27, 2025
10. Adjournment

October 2025

Steuben County REMC

Schedule of Events

- **Oct. 1**– Wabash Valley Power will be holding it's regular Board Mtg. in Indianapolis.
- **Oct. ??**– The topic for this months safety meeting and date has not yet been set.
- **Oct. 15**– Indiana Statewide's regular Board of Director's meeting beginning at 10:00 a.m.
- **Oct. 16** - WVPA Will be holding their Annual Budget review mtg. I believe that it will be a virtual mtg and Kevin is planning to attend.
- **Oct. 23** - The first round of candidate reviews will be conducted by the Steuben County REMC Board at our office beginning at 8:00 a.m.
- **Oct. 27**—The Cooperatives regular monthly Board Meeting will be held at the Cooperative office beginning with dinner at 5:30 p.m. followed by the business meeting at 6:00.

Sun	Mon	Tue	Wed	Thu	Fri	Sat
			1 WVPA B-Mtg	2	3	4
5	6	7	8	9	10	11
12	13	14	15 UUS IEC B-Mtg.	16 WVPA Budget Mtg.	17	18
19	20	21	22	23 CEO Search Round One	24	25
26	27 REMC B-Mtg.	28	29	30	31 	

P.O. Box 359
1385 S. Old 27
Angola IN 46703

Phone: 260/665-3563
Fax: 260/665-7495
Email: remcsteuben@remcsteuben.com



Touchstone EnergySM